



DUH507

Cordless Hedge Trimmer (500mm)

Powered by 18V LXT Li-Ion battery

SMOOTH AND EFFICIENT TRIMMING



18V
LITHIUM-ION **XPT**

Runtime

77 min

Battery: BL1830B

Strokes Per Minute

2,700 min⁻¹

Net Weight

3.0 kg

Battery: BL1860B

Aluminium Guide Bar

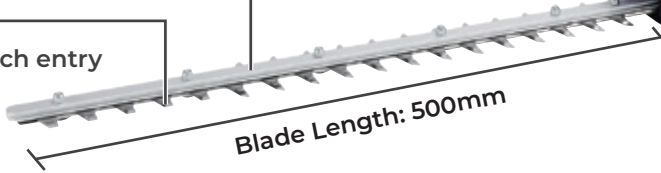
reduces overall weight of blade assembly to improve balance

Easy-to-press front switch lever

that can be gripped from multiple angles for easy operation

Angled teeth

for effective branch entry into cutting area



Variable speed control by trigger switch

allowing user to adjust the speed according to the application

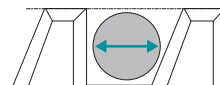
Blunt extension covers only 400mm from the front handle section

Blunt extension covers only 400mm from the front handle section



Maximum Branch Diameter

15.0mm



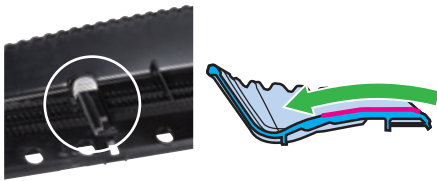
eXtreme Protection Technology

Enhanced Dust and Drip-proof Performance ensure reliable operation even under bad weather

New Chip Receiver (option)

can make it easier for user to collect leaf and twig debris, thanks to:

- Lower height of the connecting levers
- Reduced step height of the edge of the chip catching plate



Highly Durable Crank Mechanism

Increased crank wall thickness can:

- reduce the chance of falling off of the blade from the crank
- increase the contact area between the crank and blade, reducing wear of the crank



Easy-to-press front switch lever

Front switch lever has been designed to be easily pressed even when it is gripped at the side



ACCESSORIES

SHEAR BLADE SET Part No. 1911J1-6



CHIP RECIEVER Part No. 1910T1-0



SPECIFICATIONS

Blade Length	500 mm
Max Cutting Capacity	15 mm
Strokes Per Minute (SPM)	2,700
Continuous Use (min.)	with BL1830B: 77
Sound Pressure Level	Front/Rear: 1.1/0.6 m/s ²
Sound Power Level	74 dB(A)
Vibration Level	85 dB(A)
Dimensions (L x W x H)	925 x 209 x 188 mm (with BL1860B)
Net weight	2.34 kg (without battery)

Standard Equipment: Blade Cover.



Variants	Battery	Charger	Carry Case
DUH507 Z	NO	NO	NO



MAKITA GULF FZE

www.makita.ae |