



# DUR190

18V Li-ion (LXT) Cordless Grass Trimmer

## Just Turn It On

No Need for Gas, No Need for Plug-In



Tool-less shaft lock  
for easy blade change





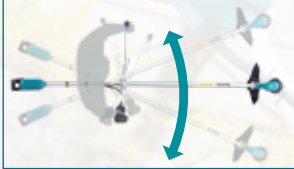
# Lightweight design with excellent tool balance for easy handling during operation

| Run time*   |     |     |                    |     |     | with BL1860B  |     |     |
|-------------|-----|-----|--------------------|-----|-----|---------------|-----|-----|
| Metal blade |     |     | Nylon cutting head |     |     | Plastic blade |     |     |
| Hi          | Mid | Low | Hi                 | Mid | Low | Hi            | Mid | Low |
| 81          | 113 | 243 | 66                 | 89  | 210 | 123           | 143 | 271 |
| min         |     |     |                    |     |     |               |     |     |

\*No load continuous run time (approx) : min

## Soft grip of ergonomic design

### Ergonomic bike handle off-set design



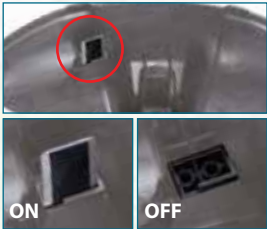
The vertical center line of the handle bar always stays aligned with that of user,

- enabling user to work with less fatigue even in long continuous operation.
- allowing for a wider swing.



### One-piece shaft

### One protector for metal blade / plastic blade / trimmer head



### Anti-weed winding guard

The guard integrated with receive washer prevents weed winding



## Extreme Protection Technology

Enhanced Dust and Drip-resistant Performance ensure reliable operation even under bad weather



## Brushless DC Motor Max. 6,000min-1

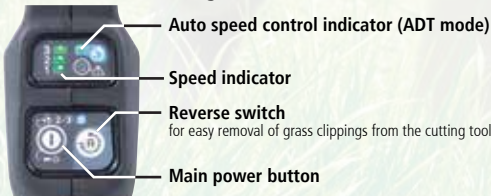
- Maintenance-free due to no brush
- Energy production is more efficient than brushed DC motor because of no friction loss caused by brushes, enabling to lower amperage for reduced heat production and increased work amount on a single full battery charge.

## Reverse switch

Equipped with reverse switch for easy removal of grass clippings stuck on the blade; grass clippings can be removed from and around the blade by slow reverse rotation of the blade



## All control devices are conveniently located near your hand



## ADT Automatic torque Drive Technology

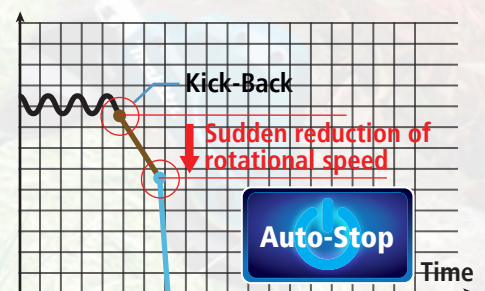
RPM is automatically shifted to 3,500 - 6,000 min<sup>-1</sup> according to density of weeds



Also the speed can be changed between 4,000/5,000/6,000 manually by pressing the button.

## AFT Active Feedback sensing Technology

Torque limiter turns the motor off if the tool is suddenly forced to lock





## Specification

|                               |                       |
|-------------------------------|-----------------------|
| <b>Cutting Width</b>          | Trimmer Head: 300 mm  |
|                               | Metal Blade: 230 mm   |
|                               | Plastic Blade: 255 mm |
| <b>No Load Speed (RPM)</b>    | 3,500 - 6,000         |
| <b>Spindle Size</b>           | M10 x 1.25 LH         |
| <b>Dimensions (L x W x H)</b> | 1,836x610x473 mm      |
| <b>Net weight</b>             | 3.4 kg                |

**Standard Equipment:** Safety Goggles, Band Assembly, Nylon Cutting Head, Accessory Bag, Hex Wrench, Cap.  
(subject to change)




## Available Variants



| AMPERE                                     | VARIANTS   | BATTERIES | CHARGER | CARRY CASE |
|--|------------|-----------|---------|------------|
| Tool Only (With 5.0Ah battery and Charger) | DUR190URT3 | 2         | 1       | NO         |
| Tool Only (Without BATTERY and CHARGER)    | DUR190UZ3  | 0         | 0       | NO         |

## ACCESSORIES

### Plastic Blade

|   | Plastic blade set |               |          | Replacement Plastic blade |          |
|---|-------------------|---------------|----------|---------------------------|----------|
|   | Arbore size       | Cutting width | Part No. | Pcs. per pkg.             | Part No. |
|  <p>replacement blade set</p> | M10 x 1.25LH      | 255 mm        | 198383-1 | 12 pcs set                | 198426-9 |

### Metal Blade

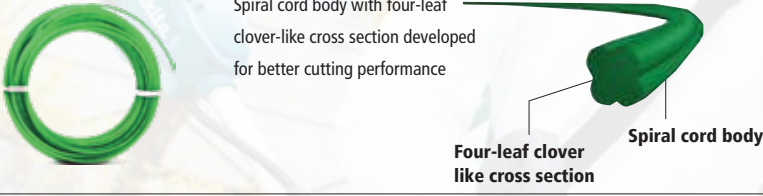
|               | Image   | Blade dia. | No. of teeth | Thickness | Part No. |
|---------------|---|------------|--------------|-----------|----------|
| 3 Tooth Blade |  | 230mm      | 3            | 3.0mm     | D-66020  |
| TCT Saw Blade |  | 230mm      | 36           | 1.25mm    | D-65981  |

### Nylon Cutting Head

|  | Cord / Line | Part No. |
|--|-------------|----------|
|  | Ø2.0mm x 3m | 198893-8 |



## Nylon Cord (String) - Four Leaf Clover like Cross Section

| Type  |   | Size (mm)         | Part No.        |
|---|---|-------------------|-----------------|
| <ul style="list-style-type: none"> <li>• 2mm - well suited for use with high powered battery operated line trimmers</li> <li>• The new nylon cord features more sharpness, about 10% less noise, and about 15% less power consumption compared with the current one</li> <li>• Less jamming in bump &amp; feed head due to rounded profile</li> </ul> |  | <p>Ø2.0mmx15m</p> | <p>197472-9</p> |



Makita Gulf FZE

[www.makita.ae](http://www.makita.ae)