

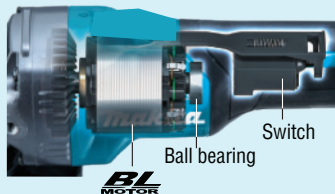
GA012G / GA013G

XGT - Cordless 115mm / 125mm
Paddle Switch - Angle Grinders



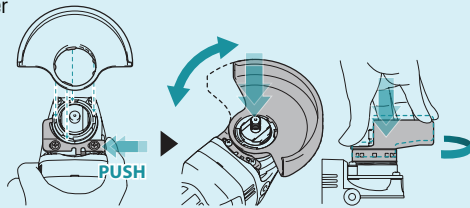
High durability with BL motor

- Large ball bearing supports the motor.
- New switch design to reduce contact weariness



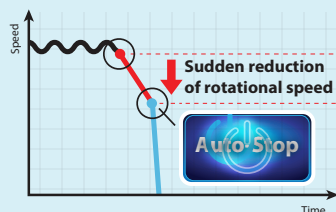
New toolless wheel cover

- Allows for fast and easy angle adjustment and installation / removal of wheel cover



Active Feedback sensing Technology

- Shuts down the tool, if the rotation speed suddenly slows down



Dust wheel guard (optional)

Wheel guard connects to dust extractors for 115mm/125mm

- 191F81-2 For Cup Wheel



- 191G06-2 For Diamond Wheel



Excellent in continuous heavy-duty work Paddle Switch Angle Grinders

A high durability paddle switch angle grinders which delivers same power as 1000W corded grinders for demanding professional. These machines features standard electronics, overload protection and AFT-active feedback detection technology. Extreme Protection Technology protects the machine in outdoor applications or harsh environments.



| Specification | GA012G | GA013G |
|------------------------|----------------|----------------|
| Wheel Diameter | 115 mm | 125 mm |
| Hole Diameter | 22.23 mm | 22.23 mm |
| No Load Speed (RPM) | 8,500 | 8,500 |
| Sound Pressure Level | 81 dB(A) | 81 dB(A) |
| Sound Power Level | 92 dB(A) | 92 dB(A) |
| Dimensions (L x W x H) | 410x130x168 mm | 410x140x168 mm |
| Net weight | 3.5 kg | 3.6 kg |

Available Variants

| TYPE | VARIANTS | BATTERIES | CHARGER | MAKPAC CASE |
|------------------------|-----------|---------------------|------------|-------------|
| W/O Battery / Charger | GA012G Z | - | - | - |
| | GA013G Z | - | - | - |
| With Battery / Charger | GA012G M2 | BL4040 (4.0Ah) 2pcs | DC40RA 1pc | Type 4 |
| | GA013G M2 | BL4040 (4.0Ah) 2pcs | DC40RA 1pc | Type 4 |



MAKITA GULF FZE

www.makita.ae

