



# XGT 115/125mm Cordless Angle Grinders Powered by 40V Max Lithium-ion battery

**GA022G | GA023G**  
(115mm) (125mm)



**SLIDE SWITCH**

**GA028G | GA029G**  
(115mm) (125mm)



**PADDLE SWITCH**

## Excellent grinders for heavy-duty operation

Delivers the same power as 1,100W corded grinders

## Faster cutting and grinding speed



**Bluetooth®**

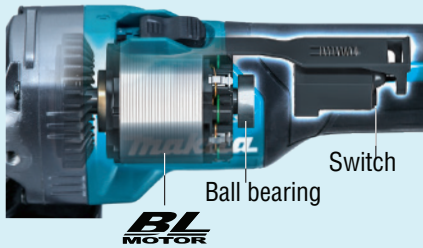
**AWS**

Connects to compatible Dust Extractor with Bluetooth.  
Dust extractor starts automatically when the tool starts.  
Also dust extractor stops on its own when the tool is in rest

**XGT 40V<sup>max</sup> LITHIUM MOTOR BL XPT AFT AWS (BRAKE)**

## High durability with BL motor

- Large ball bearing supports the motor
- New switch design to reduce contact weariness

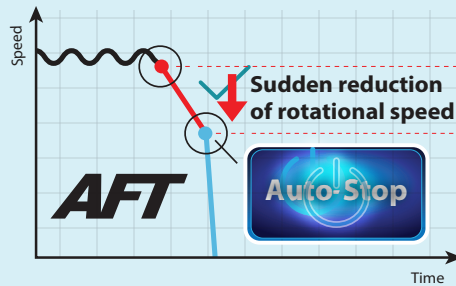


Spiral bevel gears for smoother rotations and a more efficient transfer of energy.

Reinforced metal gear housing engineered for maximum job site durability

## Active Feedback Sensing Technology

Shuts down the tool, if the rotation speed suddenly slows down



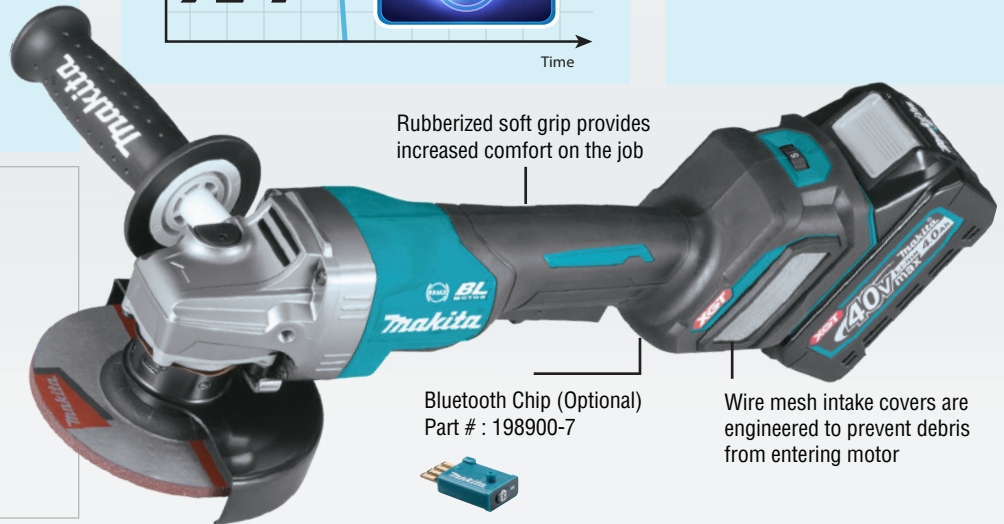
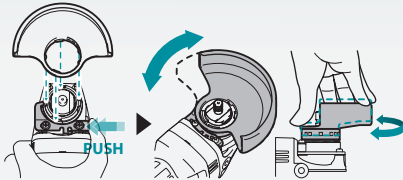
## Extreme Protection Technology XPT

is engineered for improved dust and water resistance



## New tool-less wheel cover

Allows for fast and easy angle adjustment and installation / removal of wheel cover



Rubberized soft grip provides increased comfort on the job

Bluetooth Chip (Optional)  
Part #: 198900-7

Wire mesh intake covers are engineered to prevent debris from entering motor

## Electronic current limiter

helps protect the motor from overload in high torque application

## Electric brake

stops the grinding or cut-off wheel in 2 seconds or less for maximum productivity



## Anti-restart protection

engineered to prevent motor start up when battery is inserted with switch locked on

## Soft start

suppresses start-up reaction for smooth start-ups and longer gear life

## Variable speed control dial

(3,000 - 8,500 RPM) matches the speed to your application

	No load speed (RPM)	Cutting / Rough grinding	Grinding / Finish grinding	Rust removal / Paint removal	Stainless steel polishing
1	3,000				✓
2	4,500			✓	✓
3	6,000		✓	✓	✓
4	7,500		✓		
5	8,500	✓			

Specification	GA022G	GA023G	GA028G	GA029G
Wheel Diameter	115 mm	125 mm	115 mm	125 mm
Hole Diameter	22.23 mm	22.23 mm	22.23 mm	22.23 mm
No Load Speed (RPM)	3,000 - 8,500	3,000 - 8,500	3,000 - 8,500	3,000 - 8,500
Vibration Level (grinding)	5.5 m/s <sup>2</sup>	6.5 m/s <sup>2</sup>	5.0 m/s <sup>2</sup>	6.0 m/s <sup>2</sup>
Disc Sanding	2.5 m/s <sup>2</sup> or less	2.5 m/s <sup>2</sup>	2.5 m/s <sup>2</sup>	3.0 m/s <sup>2</sup>
Sound Pressure / Power Level	81 dB(A) / 92 dB(A)	81 dB(A) / 92 dB(A)	81 dB(A) / 92 dB(A)	82 dB(A) / 93 dB(A)
Dimensions (L x W x H)	425x130x168 mm	425x140x168 mm	425x130x168	425x140x168 mm
Net weight (without battery)	2.3 kg	2.3 kg	2.3 kg	2.3 kg
Switch Type	Slide Switch	Slide Switch	Paddle Switch	Paddle Switch

## Accessories

Tool-less Wheel cover for grinding (Standard)

347479-7 (for 115mm)

347480-2 (for 125mm)



Dust guard for Diamond wheel (optional) 191F81-2 (for 125mm)



Dust guard for Cup wheel (optional) 191G06-2 (for 125mm)



Vibration proof grip set (optional) 194514-0



## Available Variants

VARIANTS	MODELS	BATTERY	CHARGER	WIRELESS UNIT	MAKPAC STACKING CASE
BARE TOOL	GA022G Z	-	-	-	-
	GA023G Z	-	-	-	-
	GA028G Z	-	-	-	-
	GA029G Z	-	-	-	-
KIT VERSION	GA022G M1	1pc of BL4040 4.0Ah	1pc of DC40RA	-	TYPE 4
	GA023G M1				
	GA028G M1				
	GA029G M1				
	GA022G M2				
GA023G M2	2pcs of BL4040 4.0Ah	1pc of DC40RA	-	TYPE 4	
GA028G M2					
GA029G M2					

