



GA046G (115mm) | GA047G (125mm)
XGT Cordless Angle Grinders with X-Lock System
Powered by 40V Max Lithium-ion battery

Excellent grinders for heavy-duty operation
Delivers the same power as 1,100W corded grinders



PADDLE SWITCH

XLOCK

Speed and Safety in One Click

The X-Lock system allows for the tool-less installation and removal of X-Lock wheels in a single action. It minimizes down time and prevents overtightening of accessories



Simply press to place

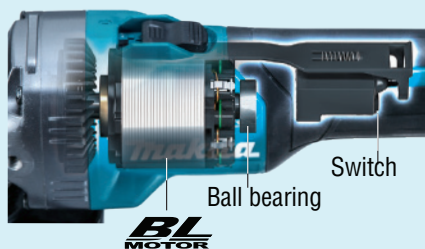


Pull the lever to release



High durability with BL motor

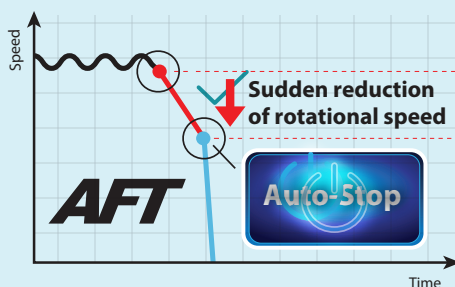
- Large ball bearing supports the motor
- New switch design to reduce contact weariness



Spiral bevel gears for smoother rotations and a more efficient transfer of energy. Reinforced metal gear housing engineered for maximum job site durability

Active Feedback Sensing Technology

Shuts down the tool, if the rotation speed suddenly slows down

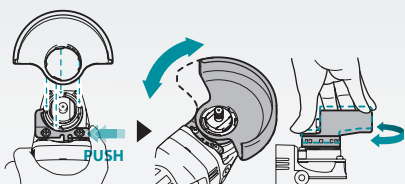


Extreme Protection Technology XPT

is engineered for improved dust and water resistance

New tool-less wheel cover

Allows for fast and easy angle adjustment and installation / removal of wheel cover



Electronic current limiter

helps protect the motor from overload in high torque application

Electric brake

stops the grinding or cut-off wheel in 2 seconds or less for maximum productivity



Anti-restart protection

engineered to prevent motor start up when battery is inserted with switch locked on

Soft start

suppresses start-up reaction for smooth start-ups and longer gear life



AWS Bluetooth Chip slot

Chip Part #: 198900-7 (Optional)



Rubberized soft grip provides increased comfort on the job

Wire mesh intake covers are engineered to prevent debris from entering motor

Specification	GA046G	GA047G
Wheel Diameter	115 mm (4-1/2")	125 mm (5")
No Load Speed (RPM)	8,500	8,500
Vibration Level (grinding)	3.7 m/s ²	4.5 m/s ²
Disc Sanding	2.5 m/s ² or less	2.5 m/s ² or less
Sound Pressure / Power Level	81 dB(A) / 92 dB(A)	81 dB(A) / 92 dB(A)
Dimensions (L x W x H)	351 x 130 x 146 mm	351 x 140 x 146 mm
Net weight (without battery)	2.0 Kg	2.0 Kg
Switch Type	Paddle Switch	Paddle Switch

Accessories

X-Lock Thin Cutting Wheel
E-00387 - 115X1.2X22.23 (A60T Inox)
E-00418 - 125X1.2X22.23 (A60T Inox)

X-Lock Depressed Center Grinding Wheel
E-00365 - 115X6.0X22.23 (A60T Inox)
E-00393 - 125X6.0X22.23 (A60T Inox)

X-Lock Diamond Wheel
E-02060 - 115X22.23 (Segmented rim)
E-02076 - 125X22.23 (Segmented rim)

Tool-less Wheel cover for grinding (Standard)
162707-7 (for 115mm)
162708-5 (for 125mm)

Dust guard for Diamond wheel (optional) 191G05-4 (for 125mm X-lock grinders)

Vibration proof grip set (optional) 194514-0

Available Variants

VARIANTS	MODELS	BATTERY	CHARGER	WIRELESS UNIT	MAKPAC STACKING CASE
BARE TOOL	GA046G Z	-	-	-	-
	GA047G Z	-	-	-	-
KIT VERSION	GA046G M2	2pcs of BL4040 4.0Ah	1pc of DC40RA	-	TYPE 4
	GA047G M2				



MAKITA GULF FZE

www.makita.ae |    