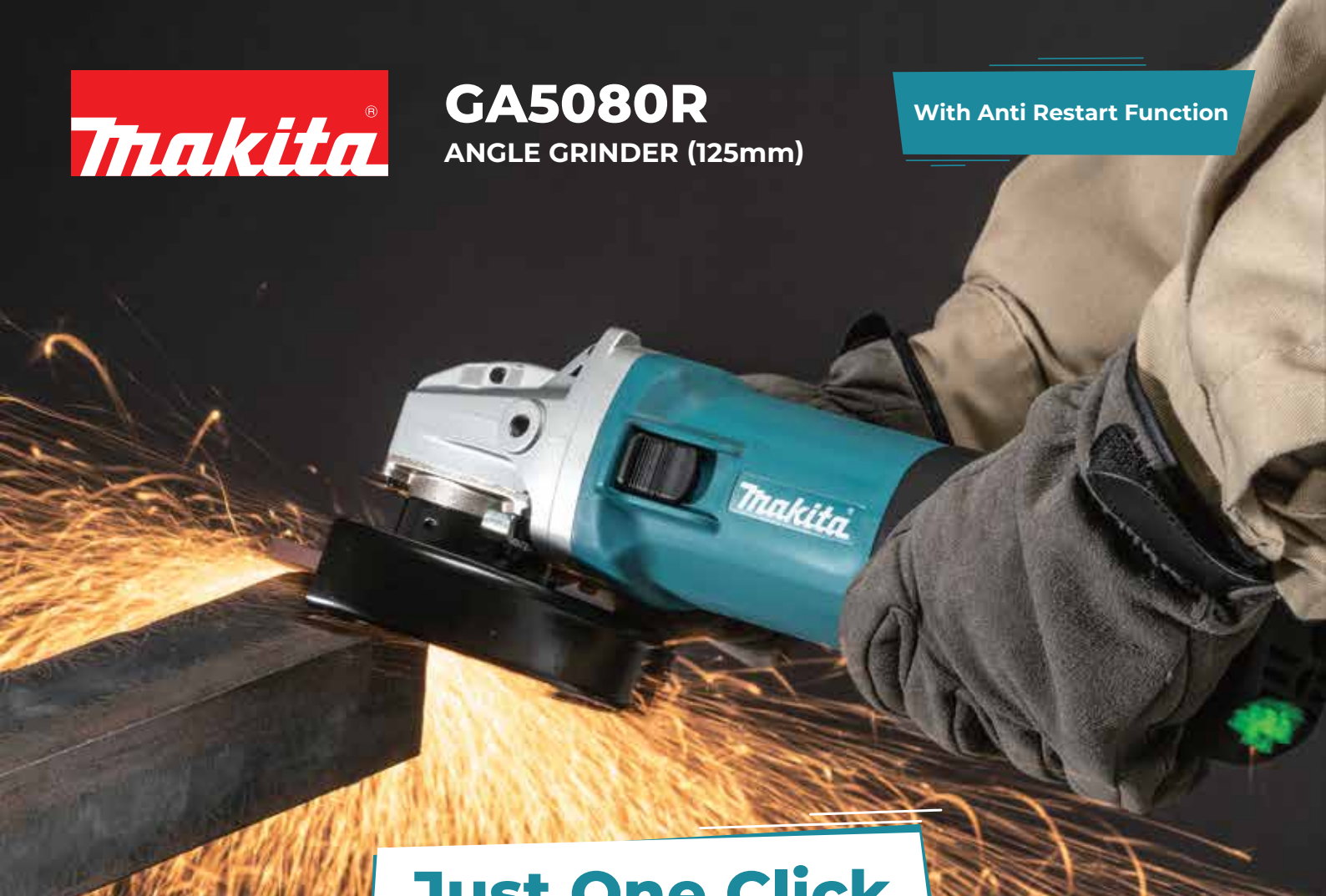




GA5080R

ANGLE GRINDER (125mm)

With Anti Restart Function



Just One Click



X-LOCK

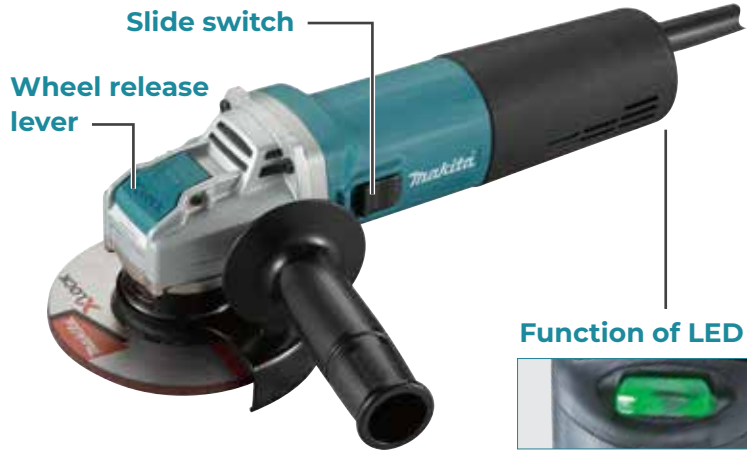
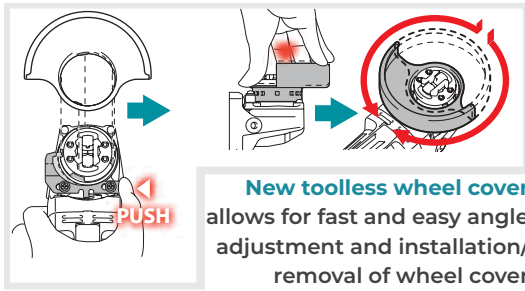
Quick and Easy Wheel Change System

Snap-in in a second

Continuous Rating Input **1,400W**



QUICK AND EASY WHEEL CHANGE



Function of LED light



Solid Green indicates that the tool is ready to work



Anti-restart function prevents accidental startup. Even if plugged in with the switch "ON", the tool does not start with a blinking red light for visual warning



No tool required
X-LOCK mechanism ensures that the accessory is properly mounted to the tool even without nut, flange, and spanner



No over-tightening
X-LOCK accessories are firmly attached and cannot be mounted incorrectly



No scratching workpiece
by nuts even when flat grinding

ACCESSORIES

Dust Collection Wheel Guard for Diamond Wheel
Part No. 191G05-4



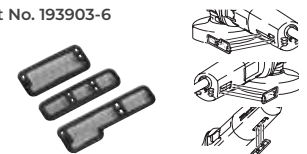
Wheel Cover (Standard Equipment) for abrasive cut-off wheel
Part No. 162708-5



Anti-vibration Grip (Standard Equipment)
Part No. 194514-0



Dust Cover Attachment Set
Part No. 193903-6



Wire Cup Brushes (optional accessories)

D-73396 - 0.3mm Crimped Steel Wire



D-73405 - Knotted Wire (Knot Cup - 0.5mm Steel)



Part Number	Wheel Diameter(mm)	Type	Material	Wire Diameter(mm)	Max (rpm)
D-73396	75mm	Crimped Wire	Steel	0.3mm	12,500
D-73405	115mm	Knotted(Full) Wire	Steel	0.5mm	12,500

SPECIFICATIONS

Continuous rating input	1,400W
Wheel Diameter/ Hole Diameter	125 mm / 22.3 mm
Max Cutting Depth	31 mm
No Load Speed (RPM)	12,000
Vibration Level	Surface Grinding w/ Normal Side Grip: 7.5m/s ²
Sound Pressure Level	84dB(A)
Sound Power Level	95dB(A)
Dimensions (L x W x H)	309 x 141 x 113 mm
Net weight	2.5 - 3.6 kg
Power supply cord	2.5 m

Standard Equipment: Side Grip, Wheel Cover.

- Double Insulation
- Constant Speed
- Soft Start
- Dust Collection

125mm X-Lock Wheels (optional accessories)

125mm X-LOCK accessories are compatible with conventional angle grinders

Grinding Wheel / Metal
Part No. E-00393



Thin Cut-off Wheel (Flat)
Part No. E-00418



Diamond Wheel / Concrete
Part No. E-02076



MAKITA GULF FZE

www.makita.ae