



VC004GL

XGT Cordless Vacuum Cleaner (15L) (Dry) (AWS) Powered by 40V MAX Li-Ion battery

Excellent vacuum performance equivalent to corded vacuum cleaner achieved with combination of XGT battery and brushless motor



AUTO WIRELESS SYSTEM (AWS)

AWS Dust Extractor connects wirelessly with the power tool and allows the dust extractor to start automatically when the tool starts. Also dust extractor stops on its own when the tool is in rest



AWS

Wireless unit slot allows to insert Bluetooth chip that communicates between tool and dust extractor for on/off function (198900-7) (standard)

FREE FROM CORD

Using our cordless dust extractor with a cordless power tool means freedom of movement, reduced safety hazards and no plug-in or power issue

HIGH SUCTION POWER

205W | **23kPa**
(Max Suction Power) (Max Sealed Suction)

QUIET OPERATION

53dB(A)

@ dial 1 speed

Cleaner is designed to reduce noise level for operator convenience and also for noise sensitive areas

LARGE DUST CAPACITY

15L

Large dust capacity for continuous operation

LONGER RUNTIME

Vacuum Cleaner adapts two XGT battery that works parallel. Cleaner automatically switches to the second battery when the first battery runs out



220minutes

continuous operation (dial 1)
(using two 5.0Ah XGT battery in parallel)



Efficient three stage HEPA filtration system + GYUPPA



Hepa filter captures 99.97% of particulates 0.3 microns and larger

Gyuppa! - Automatic filter cleaning system

- Designed to use for industrial applications achieve constantly high suction power throughout the operation
- Easy filter cleaning simply by tapping dust off of Prefilter.
- Quiet cleaning because Damper and Prefilter make no noise



Large on-off switch

- For easy on/off
- Functions only when main power switch is on to prevent accidental switch-on during transportation, etc

Variable suction power control by dial



Suction power is variably adjustable to suit application.



On-board storage

allows for storing accessories and batteries.



IPX4

High water-resistance allows to operate the machine even if it is wet with water

Extreme Protection Technology

Enhanced Dust and Drip-proof performance ensure reliable operation even under bad weather

Rubber bumper to protects walls and furniture from bumps and scratches

SPECIFICATION

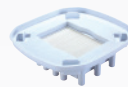
Type	Airborne particles (AWS)
Filter Type	HEPA + GYUPPA
Tank Capacity	15 L
Continuous Use (min.) (aprox.)	28-220 (BL4050F x 2 parallel)
Max Suction Power	High: 205W
Max Air Flow	1.8 m ³ /min
Max Sealed Suction	23 kPa
Noise (dB)	67dB(A)
Dimensions (L x W x H)	366x334x475 mm
Net weight (without battery)	9.1 kg

AVAILABLE VARIANTS

TYPE	VARIANT	BATTERY	CHARGER	BLUETOOTH CHIP	CASE
BARE TOOL	VC004GLZ	-	-	YES	-

FILTERS / BAGS

POWDER FILTER SET (HEPA filter)
191V70-3
(Standard)



PRE-FILTER SET
191V68-0
(Standard)



DAMPER SET
191V69-8
(Standard)



POLY BAG SET (10PCS SET)
195432-5
(Standard)



DRY FILTER BAG (15L) (5pcs set)
195557-5
(Optional)



STANDARD ATTACHMENTS

STRAIGHT PIPE
192563-1



BEND PIPE
192562-3



HOSES



Hose 1: 38-2.5m
(195434-1)

Hose 2: 28-3.5m
(195433-3)

FRONT CUFFS
22 (195547-8)
24 (195546-0)
38 (195545-2)



CORNER NOZZLE
410306-2



NOZZLE ASSEMBLY FOR FLOOR
199455-5



MAKITA GULF FZE

www.makita.ae |