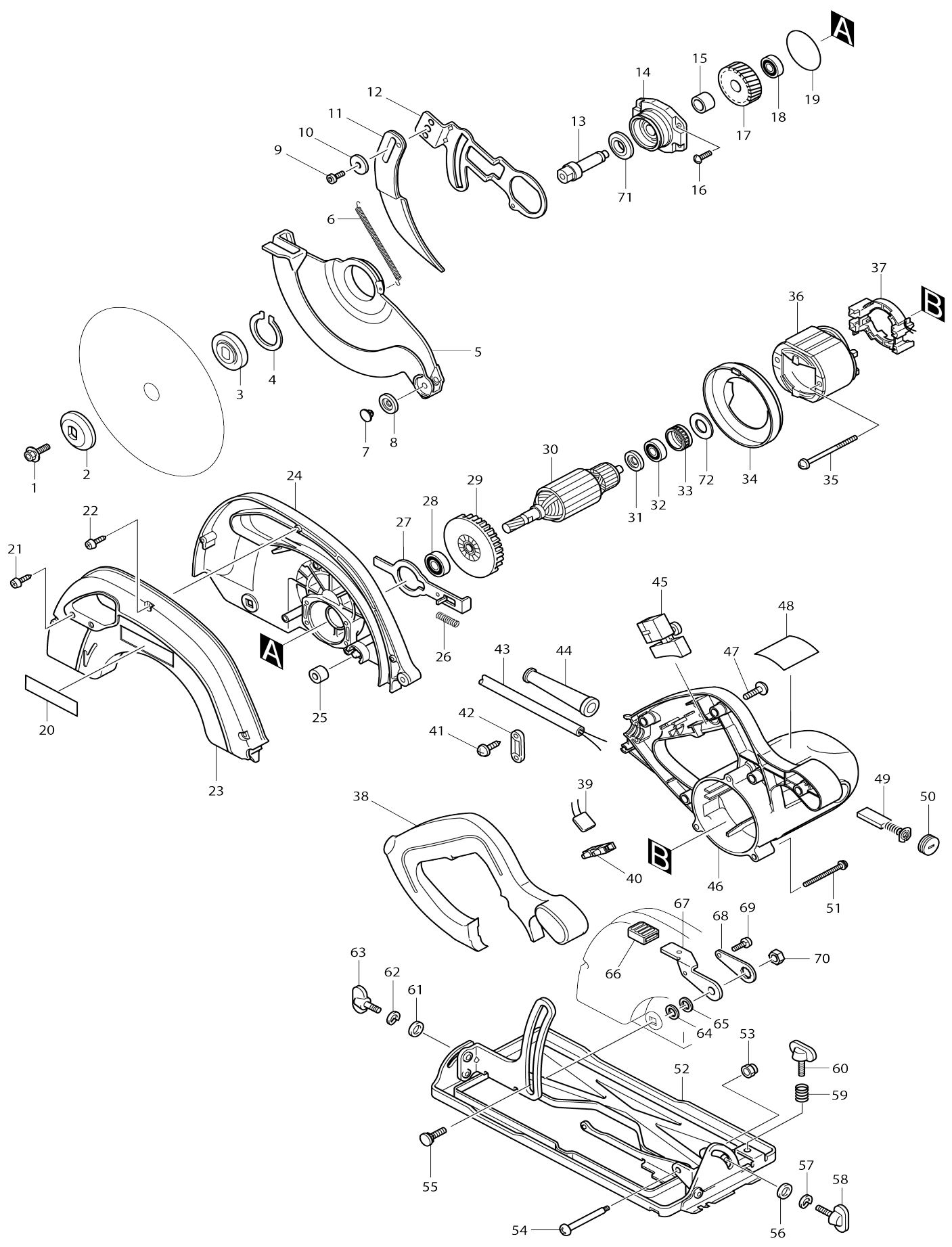


Model No.5704R CIRCULAR SAW 190MM



Model No.5704R CIRCULAR SAW 190MM

Item No.	Parts No.	Description	Interchangability	Q'ty	New/Old	Note1	Note2
001	266024-8	HEX. SOCKET HEAD BOLT M6X20		1			
002	224275-9	OUTER FLANGE 40		1			
003	224370-5	INNER FLANGE 40		1			
004	961156-3	RETAINING RING S-40		1			
005	317461-0	SAFETY COVER		1			
006	231818-0	TENSION SPRING 4		1	*		
006-1	232468-4	TENSION SPRING 4	<	1			
007	415437-2	ROLLER PIN 6		2			
008	415438-0	ROLLER 20		2			
009	922312-0	HEX. SOCKET HEAD BOLT M6X12		1			
010	253783-3	FLAT WASHER 6		1			
011	165094-3	RIVING KNIFE		1			
012	344988-7	RIVING KNIFE HOLDER		1	*		
012-1	345734-1	RIVING KNIFE HOLDER	<	1			
013	324110-2	SPINDLE		1			
014	162220-5	BEARING BOX COMPLETE		1			
015	257513-4	SLEEVE 12		1			
016	911526-6	P.H.SCREW M4X16 WITH WRM		4			
017	226540-2	HELICAL GEAR 49		1			
018	211032-4	BALL BEARING 608ZZ		1			
019	213620-3	O RING 46		1			
020	819064-1	MAKITA MARK		1	*		
021	266034-5	TAPPING SCREW CT 4X16		2			
022	266034-5	TAPPING SCREW CT 4X16		3			
023	183357-5	BLADE CASE COVER		1	*		
D10		INC. 20					
023-1	317460-2	BLADE CASE COVER	O	1			
024	152810-2	BLADE CASE COMPLETE		1			
C10	263002-9	RUBBER PIN 4		1			
025	262511-5	RUBBER SLEEVE 6		1			
026	233092-6	COMPRESSION SPRING 5		1			
027	344990-0	SHAFT LOCK		1			
028	211061-7	BALL BEARING 600LLB		1			
029	241858-0	FAN 70		1			
030	516489-7	ARMATURE ASS'Y 220-240V		1			
D10		INC. 28,29,31,32					
031	681654-8	INSULATION WASHER		1			
032	211032-4	BALL BEARING 608ZZ		1			
033	421720-7	RUBBER RING 22		1			
034	417580-3	BAFFLE PLATE		1			
035	266044-2	TAPPING SCREW 5X60		2			
036	634449-8	FIELD 220-240V		1			
037	638070-5	SUPPORT COMPLETE		1			
038	417579-8	HANDLE COVER		1			
039	645200-1	NOISE SUPPRESSOR		1	*		
039-1	645190-8	NOISE SUPPRESSOR	O	1			
040	654575-7	TERMINAL BLOCK		1			

041	265995-6	TAPPING SCREW 4X18		2		
042	687052-4	STRAIN RELIEF		1	*	
042-1	687124-5	STRAIN RELIEF	O	1		
043	665865-3	POWER SUPPLY CORD 1.0-2-2.5		1		
044	682540-6	CORD GUARD 9.3-90		1		
045	651291-2	SWITCH SGE5115C-5		1		
046	152811-0	MOTOR HOUSING COMPLETE		1		
C10	643708-9	BRUSH HOLDER 5-11		2		
047	265995-6	TAPPING SCREW 4X18		5		
048	853170-2	NAME PLATE 5704R		1		
049	191963-2	CARBON BRUSH CB-303		1	*	
049-1	194996-6	CARBON BRUSH SET CB-303	O	1		
050	643750-0	BRUSH HOLDER CAP 7-11		2		
051	911268-2	PAN HEAD SCREW M5X45		3		
052	168353-4	BASE		1		
053	252103-8	HEX. LOCK NUT M5-8		1		
054	265075-8	+ PAN HEAD SCREW M5		1		
055	265965-5	CAP SQUARE NECK BOLT M8X24		1		
056	941151-9	FLAT WASHER 6		1		
057	942151-2	SPRING WASHER 6		1	*	
057-1	253428-3	SPRING WASHER 6	O	1	*	
058	265701-9	THUMB SCREW M6X14		1		
059	231316-4	COMPRESSION SPRING 7		1		
060	265701-9	THUMB SCREW M6X14		1		
061	941151-9	FLAT WASHER 6		1		
062	942151-2	SPRING WASHER 6		1	*	
062-1	253428-3	SPRING WASHER 6	O	1	*	
063	265701-9	THUMB SCREW M6X14		1		
064	941201-0	FLAT WASHER 8		1		
065	941201-0	FLAT WASHER 8		1		
066	421746-9	RUBBER CAP		1		
067	344989-5	LEVER PLATE		1		
068	341415-5	LOCK PLATE		1		
069	911108-4	PAN HEAD SCREW M4X8		1		
070	931402-8	HEX. NUT M8		1		
071	257243-7	RING 12		1		
072	261115-0	RUBBER WASHER 13		1		
A01	B-02939	T.C.T. SAW BLADE 190MM		1	*	
A01-1	B-07967	T.C.T.SAW BLADE 190X30X12T	<	1		
A02	164095-8	GUIDE RULE		1		
A03	192420-3	JOINT		1		
C10	266026-4	TAPPING SCREW BIND CT 4X12		2		
A04	783203-8	HEX. WRENCH 5		1		
A05	807439-6	M-FORCE STICKER LABEL		2		
E01	824606-8	PLASTIC CARRYING CASE		1	*	
C10	183336-3	LATCH SET		1	*	
E01-1	824651-3	PLASTIC CARRYING CASE	X	1		
C10	417059-4	LATCH		2		
C20	418889-6	HANDLE		1		

Please state Parts No. when your order.

Print Date 10/06/2023