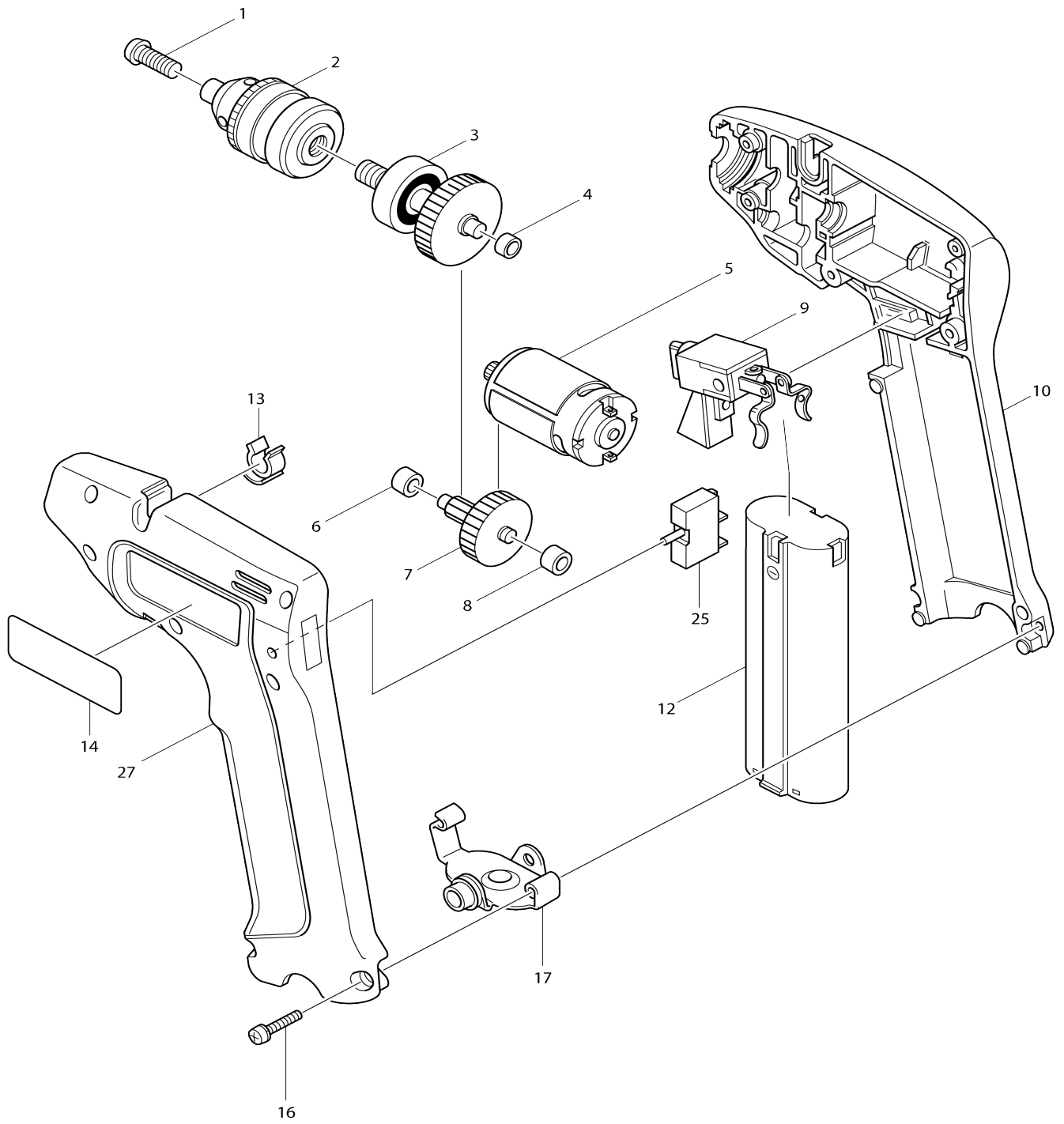


# Model No.6010D CORDLESS DRILL 10MM



Model No.6010D CORDLESS DRILL 10MM

Item No.	Parts No.	Description	Interchangability	Q'ty	New/Old	Note1	Note2
001-1	251448-1	- PAN HEAD SCREW M5X18		1			
002	763054-5	DRILL CHUCK S10		1	*		
002-1	192970-8	DRILL CHUCK	O	1			
003-1	153149-6	Gear complete		1			
C30	321724-8	Spindle		1			
C40	961015-1	STOP RING E-9		1			
004	214017-9	PLANE BEARING 5		1			
005	629514-6	DC MOTOR 7.2V		1	*		
C10	221851-0	SPUR GEAR 11		1	*		
005-1	629801-3	DC MOTOR 7.2V	<	1			
C10	221851-0	SPUR GEAR 11		1			
006	214016-1	PLANE BEARING 3		1			
007	226048-6	Gear complete 13-58		1			
008	214016-1	PLANE BEARING 3		1			
009-1	531043-6	SWITCH ASS'Y TG60A		1			
010-3	181686-0	Housing set (blue)		1			
C11	816266-0	INDICATION LABEL		1			
C20	817681-1	Caution label		1			
D10		INC. 27					
012-1	191679-9	BATTERY 7000 SET		1	*		
012-2	193888-6	Battery set 7034	<	1			
013	411640-3	HOLDER 6		1			
014	815285-3	Name plate 6010D		1			
016	911143-2	PAN HEAD SCREW M4X22		7			
017	163157-9	SET PLATE		1	*		
017-1	342833-0	SET PLATE	O	1			
025-1	652532-9	OVER CURRENT RELAY BC51		1			
027-3	181686-0	Housing set (blue)		1			
C11	816266-0	INDICATION LABEL		1			
C20	817681-1	Caution label		1			
D10		INC. 10					
400-1	763418-3	CHUCK KEY S10		1			
401	784202-3	PHILLIPS BIT 2-45		1	*		
401-1	784202-3	PHILLIPS BIT 2-45	O	1	*		
401-2	784202-3	PHILLIPS BIT 2-45	O	1			
402	414938-7	BATTERY COVER		1			

Please state Parts No. when your order.

Print Date 10/06/2023