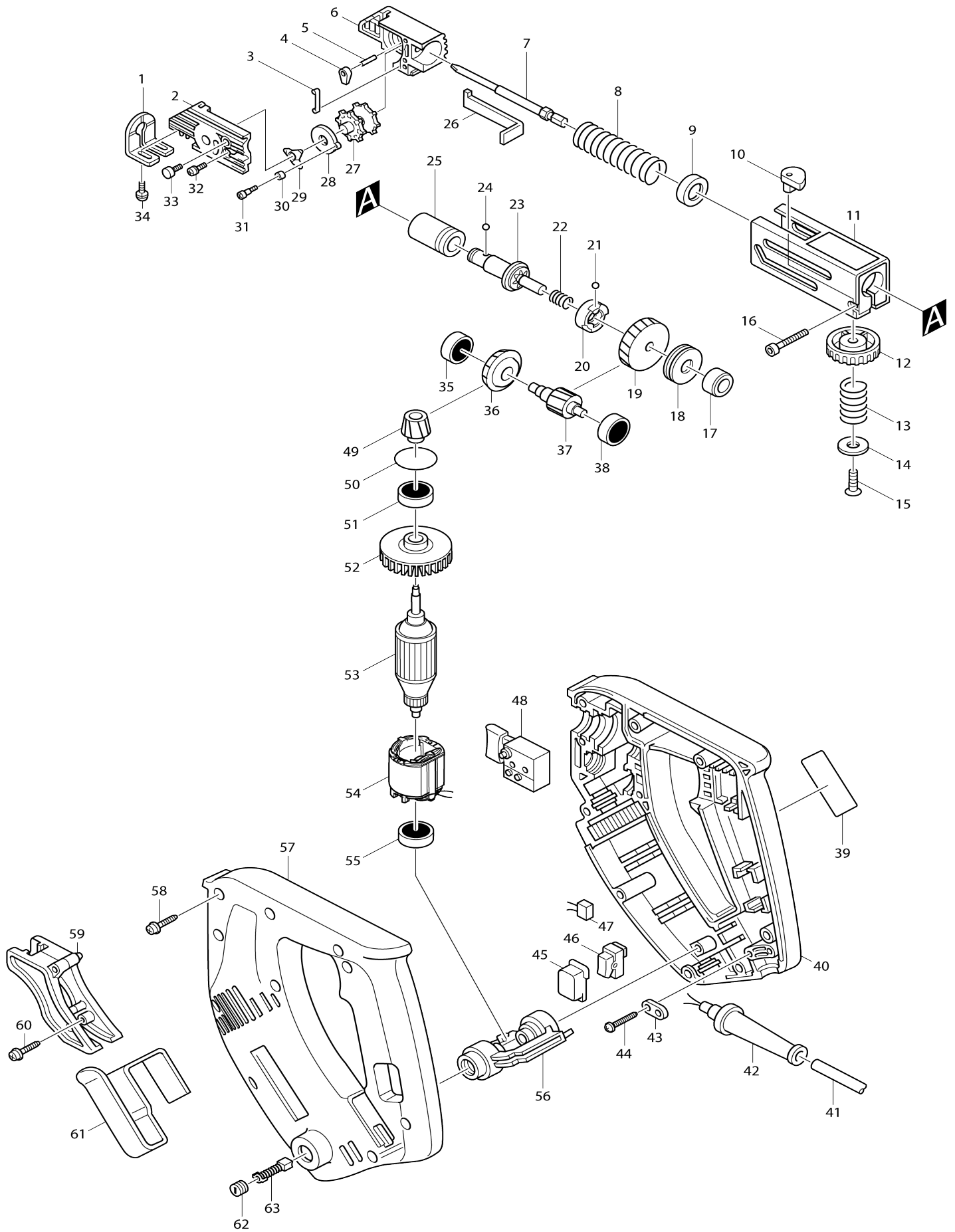


Model No.6830 AUTO FEED SCREWDRIVER



Model No.6830 AUTO FEED SCREWDRIVER

Item No.	Parts No.	Description	Interchangability	Q'ty	New/Old	Note1	Note2
001	344054-0	STOPPER PLATE		1			
002-1	152502-3	BOX COVER COMPLETE		1			
C11	256254-9	PIN 3		2			
003	232132-7	LEAF SPRING		1			
004	311923-0	STOPPER		1			
005-1	256254-9	PIN 3		1			
006A_	152467-9	FEEDER BOX COMPLETE		1	*		
C10	256222-2	PIN 3		2	*		
006A1	152503-1	FEEDER BOX COMPLETE	S	1			
C11	256254-9	PIN 3		2			
007A_	784234-0	PHILLIPS BIT 2-110		1			
008A_	233112-6	COMPRESSION SPRING 21		1			
009	421467-3	DUST COVER		1			
010	311924-8	SHIFTER PIN		1	*		
010-1	310008-9	SHIFTER PIN	S	1			
011-2	150565-3	CASING COMPLETE		1			
C10	816269-4	INDICATION LABEL		1			
C20	816282-2	INDICATION LABEL		1			
012	415451-8	KNOB 40		1	*		
012-1	415829-5	KNOB 40	X	1			
013	233089-5	COMPRESSION SPRING 12		1			
014	267117-4	FLAT WASHER 6		1			
015	912117-6	COUNTERSUNK HEAD SCREW M4 X12		1			
016	922146-1	HEX. SOCKET HEAD BOLT M4X25		1			
017	214028-4	PLANE BEARING 8		1			
018	212042-4	THRUST NEEDLE BEARING 821		1			
019	226413-9	HELICAL GEAR 55		1			
020	223095-8	CLUTCH CAM		1			
021	216008-6	STEEL BALL 4		3			
022	233006-5	COMPRESSION SPRING 9		1			
023A_	223106-9	SPINDLE		1			
024	216001-0	STEEL BALL 3.5		1			
025A_	214162-0	PLANE BEARING 14		1			
026	344055-8	PLATE		1	*		
026-1	344308-5	PLATE	X	1			
027	311921-4	RATCHET WHEEL		1			
028-1	311976-9	RATCHET DISC		1			
029	232133-5	LEAF SPRING		1			
030-1	257664-3	SLEEVE 4		1			
031-1	265036-8	+ FLAT HEAD SCREW M3X5		1			
032	911133-5	PAN HEAD SCREW M4X18		1			
033	922107-1	HEX. SOCKET HEAD BOLT M4X8		2			
034	922107-1	HEX. SOCKET HEAD BOLT M4X8		2	*		
034-1	922132-2	HEX. SOCKET HEAD BOLT M4X18	X	2			
035	211014-6	BALL BEARING 606		1			
036	226705-6	SPIRAL BEVEL GEAR 22		1			
037	226412-1	HELICAL GEAR 14		1			

038	211014-6	BALL BEARING 606		1		
039	857517-2	NAME PLATE 6830		1		
040	182601-7	HOUSING SET		1		
D10		INC. 57,64				
041P_	665394-6	POWER SUPPLY CORD 1.0-2-2.5		1		
042A_	682502-4	CORD GUARD 8-85		1		
043A1	687052-4	STRAIN RELIEF		1		
044	265995-6	TAPPING SCREW 4X18		2		
045	421460-7	DUST COVER		1	*	
045-1	421621-9	DUST COVER	O	1		
046	651556-2	SWITCH VLX11		1		
047A_	645173-8	NOISE SUPPRESSOR		1		
048A_	651272-6	SWITCH SGEL106CV-1		1		
049	226704-8	SPIRAL BEVEL GEAR 15		1		
050	213008-7	O RING 22.4		1	*	
050-1	213380-7	O RING 24	<	1		
051	211061-7	BALL BEARING 6000LLB		1		
052	241869-5	FAN 55		1		
053C_	517063-4	ARMATURE ASS'Y 220V		1		
D10		INC. 51,52,55				
054C_	633258-2	FIELD 220V		1		
055	211026-9	BALL BEARING 627LLB		1	*	
055-1	210025-8	BALL BEARING 627LLB	O	1		
056	152433-6	HOLDER ARM CPMLETE		1		
C10	643917-0	BRUSH HOLDER		2	*	
C11	643932-4	BRUSH HOLDER 6X9	O	2		
057	182601-7	HOUSING SET		1		
D10		INC. 40,64				
058-1	266045-0	TAPPING SCREW 4X20		10		
059	415352-0	SCREW GUIDE		1		
060-1	266045-0	TAPPING SCREW 4X20		1		
061	344056-6	HOOK		1		
062	643550-8	BRUSH HOLDER CAP 5-8		2		
063A_	191940-4	CARBON BRUSH CB-411		1	*	
063A1	195010-1	CARBON BRUSH SET CB-411	O	1		
064	819063-3	MAKITA LABEL		1		
A01A_	784234-0	PHILLIPS BIT 2-110		1		
A02	783201-2	HEX. WRENCH 3		1		
A03	410048-8	WRENCH HOLDER 3.4		1		
A04	824421-0	PLASTIC CARRYING CASE		1		
C10	182935-8	SLIDE LATCH (R.L) SET		1		
B01A_	182857-2	CASING SET		1		
D10		INC. 1,2,3-5,6,8,10,				
D20		11,12,13-16,26,27,28,				
D30		29,30,31,32,33,34				
B02A_	182858-0	FEEDER BOX SET		1		
D10		INC. 2,3-5,6,27,28,29,				
D20		30,31,32,33				

Please state Parts No. when your order.

Print Date 10/09/2023