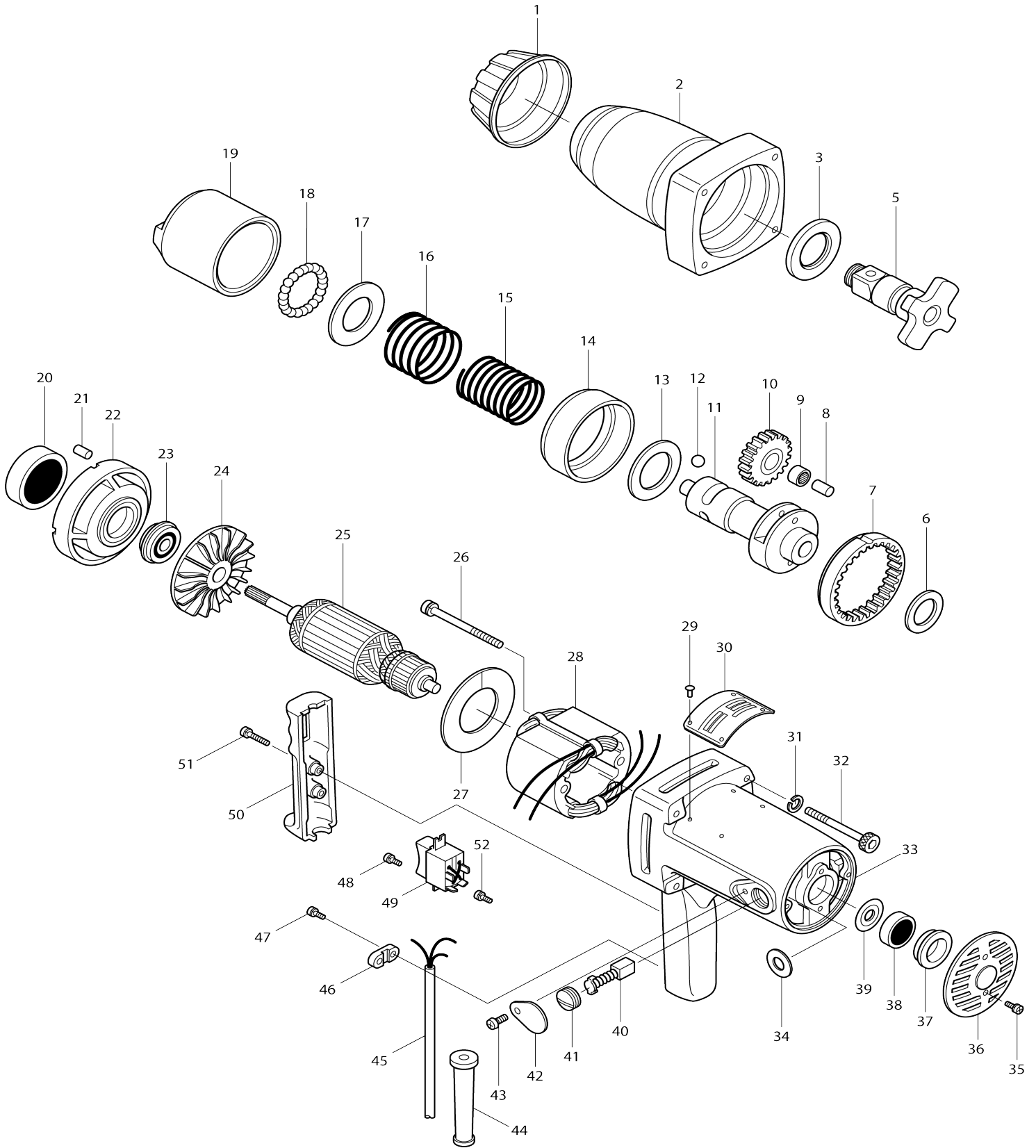


Model No.6910 IMPACT WRENCH



Model No.6910 IMPACT WRENCH

Item No.	Parts No.	Description	Interchangability	Q'ty	New/Old	Note1	Note2
001	421120-1	BUMPER		1			
002	156135-6	HAMMER CASE		1			
C10	213456-0	OIL SEAL 35		1			
C20	257536-2	SLEEVE 35		1			
003	253909-7	FLAT WASHER 35		1			
004	231921-7	RING SPRING 22		1			
005	325587-4	ANVIL		1			
006	253182-9	FLAT WASHER 36		1			
007	221815-4	INTERNAL GEAR 82		1			
008	256051-3	PIN 10		2			
009	212063-6	NEEDLE BEARING 1012		2			
010	221816-2	SPUR GEAR 37		2			
011	325416-1	SPINDLE		1			
012	216010-9	STEEL BALL 10.3		2			
013	253713-4	FLAT WASHER 35		1			
014	333112-7	RING 79		1			
015	231211-8	COMPRESSION SPRING 36		1			
016	231212-6	COMPRESSION SPRING 49		1			
017	253712-6	FLAT WASHER 36		1			
018	216002-8	STEEL BALL 4.8		32			
019	325415-3	HAMMER		1			
020	211451-4	BALL BEARING 6007LLB		1			
021	256040-8	PIN 5		2			
022	312739-6	BEARING HOUSING		1			
023	211217-2	BALL BEARING 1511LLB		1			
024	241613-0	FAN 90		1			
025C_	513285-4	ARMATURE ASS'Y 220V		1			
D10		INC. 23-25,38,39					
026-2	265343-9	+ HEX. BOLT M5X80		2			
027	413009-7	BAFFLE PLATE		1			
028C_	623255-6	FIELD 220V		1			
029	953106-2	RIVET 0-5		4			
030	815015-2	NAME PLATE 6910		1			
031	942151-2	SPRING WASHER 6		4			
032	922382-9	HEX. SOCKET HEAD BOLT M6X60		4			
033	156136-4	MOTOR HOUSING		1			
C10	643653-8	BRUSH HOLDER 6.5-13.5		2			
C20	913206-0	SET SCREW M5X8		2			
C30	951104-0	SPRING PIN 4-12		1			
034	681002-1	INSULATION WASHER		2			
035	911216-1	PAN HEAD SCREW M5X14		2			
036	284016-5	REAR COVER		1			
037	421075-0	CUSHION RING		1			
038	211066-7	BALL BEARING 6200LLB		1			
039	213051-6	DUST SEAL 10		1			
040-2	181044-0	CARBON BRUSH CB-153		1	*		
040-3	194985-1	CARBON BRUSH SET CB-153	O	1			

041	643650-4	BRUSH HOLDER CAP 6.5-13.5		2	*		
041-1	643650-4	BRUSH HOLDER CAP 6.5-13.5	O	2			
042	341367-0	BRUSH HOLDER CAP COVER		2			
043	911111-5	PAN HEAD SCREW M4X10 WITH W		2			
044D 1	682540-6	CORD GUARD 9.3-90	X	1	*		
044D 2	682505-8	CORD GUARD 10-90	O	1			
045O_	665231-4	POWER SUPPLY CORD 1.00-3-2.5		1			
046C1	687000-3	STRAIN RELIEF	X	1			
047A1	911123-8	PAN HEAD SCREW M4X14		2			
048	911106-8	PAN HEAD SCREW M4X8		1			
049-1	651558-8	SWITCH SL220SD-4		1	*		
049-2	651558-8	SWITCH SL220SD-4	O	1			
050	312742-7	HANDLE COVER		1			
051	911146-6	PAN HEAD SCREW M4X25		2			
400	273444-9	GRIP 37		1			
401	312743-5	GRIP BASE		1			
402	923456-9	CAP SQUARE NECK BOLT M8X35		1			
403	345097-5	BELT		1			
404	133184-0	SOCKET 41-80		1	*		
D10		INC. 405,406					
404-1	134872-2	SOCKET 41-80 ASS'Y	O	1	*		
D10		INC. 405,406					
405	213603-3	O RING 47		1	*		
405-1	213570-2	O-RING 44	X	1	*		
406	256091-1	PIN 5.5		1	*		
406-1	256284-0	PIN 5	X	1	*		
407	783203-8	HEX. WRENCH 5		1	*		
408-3	182363-7	STEEL CARRYING CASE		1	*		
C10	819033-2	MAKITA LABEL		1	*		
408-4	182363-7	STEEL CARRYING CASE	O	1			
C10	819143-5	MAKITA LABEL		1			
409	941201-0	FLAT WASHER 8		1			
500	123018-5	SIDE GRIP ASS'Y		1			
D10		INC. 400-403,409					
A05	137104-6	SOCKET 41-90 ASS'Y		1			
C10	256A53-5	PIN 5		1			
C20	422B12-9	RUBBER RING 44		1			
E02	536004-1	LEAD ASSY		2			

Please state Parts No. when your order.

Print Date 12/11/2023