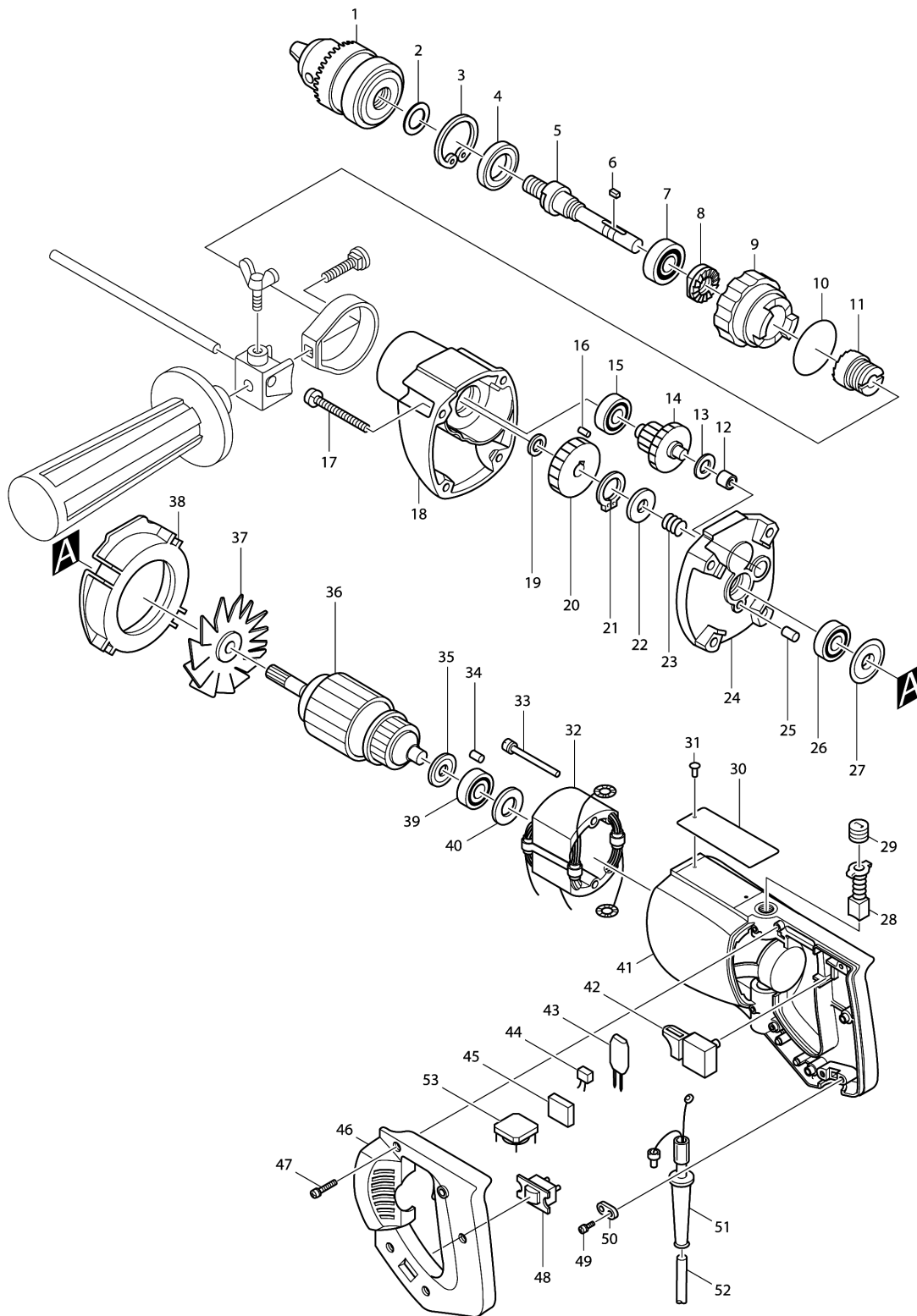


Model No.8419B 2-SPEED HAMMER DRILL 19MM



Model No.8419B 2-SPEED HAMMER DRILL 19MM

Item	Parts No.	Description	I/C	Qty	New/Old	Opt. 1	Opt. 2	Note
001-2	192877-8	DRILL CHUCK S13		1				
003	962151-6	RETAINING RING R-32		1				
004	213301-9	DUST SEAL 20		1				
005	325501-0	SPINDLE		1				
006	254201-4	KEY 4		1				
007	211201-7	BALL BEARING 6002LLB		1				
008	223023-3	CAM A		1				
009	314098-4	CHANGE RING		1				
010	213458-6	O RING 34		1				
011	223024-1	CAM (B)		1				
012	212003-4	NEEDLE BEARING 810		1				
013	253139-0	FLAT WASHER 8		1				
014	226026-6	GEAR COMPLETE 13-41		1				
015	211031-6	BALL BEARING 608LLB		1				
016	263002-9	RUBBER PIN 4		1				
017	911261-6	PAN HEAD SCREW M5X40		4				
018	156445-1	GEAR HOUSING		1				
C10	816110-1	INDICATION LABEL		1				
D10		INC. 16						
019	253084-9	FLAT WASHER 12		1				
020	221236-0	SPUR GEAR 38		1				
021	961006-2	RETAINING RING S-10		1				
022	253311-4	THIN WASHER 10		1				
023	231131-6	COMPRESSION SPRING 11		1				
024	156330-8	GEAR HOUSING COVER COMPLETE		1				
C10	214052-7	PLANE BEARING 10		1				
D10		INC. 25						
025	263005-3	RUBBER PIN 6		1				
026	211031-6	BALL BEARING 608LLB		1				
027	213002-9	DUST SEAL 8		1				
028B_	181021-2	CARBON BRUSH CB-51		1	*			
028B1	194963-1	CARBON BRUSH SET CB-51	O	1				
029	643550-8	BRUSH HOLDER CAP 5-8		2				
030	811806-9	NAME PLATE 8419B		1	*			
030-1	857U64-9	8419B NAME PLATE	S	1				
031	953106-2	RIVET 0-5		2	*			
032K_	528715-2	FIELD ASS'Y 220V		1				
C10	654081-2	RING TERMINAL		2	*			
C11	654018-9	RING TERMINAL	S	2				
C20	654546-4	CONNECTOR P-1.25		2	*			
C21	654501-6	CONNECTOR P-1.25	S	2				
033-1	911275-5	PAN HEAD SCREW M5X50		2				
034-1	263014-2	RUBBER PIN 4		1				
035	681603-5	INSULATION WASHER		1	*			
035-1	681613-2	INSULATION WASHER	O	1				

Please order the parts with part number.

Print Date 4/12/2023

Model No.8419B 2-SPEED HAMMER DRILL 19MM

Item	Parts No.	Description	I/C	Qty	New/Old	Opt. 1	Opt. 2	Note
036C_	512335-2	ARMATURE ASS'Y 220V		1				
D10		INC. 26,27,35,37,39						
037	241302-7	FAN 68		1				
038	411234-4	BAFFLE PLATE		1				
039	211031-6	BALL BEARING 608LLB		1				
040	253192-6	FLAT WASHER 14		1				
041-1	159087-0	MOTOR HOUSING		1	*			
C10	643556-6	BRUSH HOLDER 5-8		2	*			
D10		INC. 34			*			
041-2	159087-0	MOTOR HOUSING	S	1				
C10	643556-6	BRUSH HOLDER 5-8		2				
D10		INC. 34						
042G_	651235-2	SWITCH C2M-A1T		1	*			
042G1	651225-5	SWITCH SGEL215C	S	1				
043A_	631011-0	DIODE S3V60ZM-H		1				
044H1	645173-8	NOISE SUPPRESSOR		1	*			
044H2	645253-0	NOISE SUPPRESSOR	S	1				
045	685718-0	SPONGE SHEET	S	1				
046-1	414522-8	HANDLE COVER		1				
047	911153-9	PAN HEAD SCREW M4X28		4				
048A_	651600-5	SWITCH SS106A		1				
049-1	911133-5	PAN HEAD SCREW M4X18		2				
050	687001-1	STRAIN RELIEF		1				
051	682504-0	CORD GUARD 10-85		1				
052N_	665516-8	POWER SUPPLY CORD 1.00-2-2.5		1				
053B_	646325-4	LINE COIL		1	*			
053C_	646325-4	LINE COIL		1	*			
054	424726-4	GASKET		1				
400	321059-7	DEPTH GAUGE		1				
401	924216-2	WING BOLT M5X15		1				
402	251982-1	CAP SQUARE NECK BOLT M8X35		1				
403	341643-2	BELT		1				
404	315261-2	GRIP BASE		1				
406-1	273479-0	GRIP 37		1				
407-1	763411-7	CHUCK KEY S13		1	*			
407-2	763432-9	CHUCK KEY S13	O	1				
410-3	182617-2	STEEL CARRYING CASE		1	*			
C10	819033-2	MAKITA LABEL		1	*			
410-4	824608-4	PLASTIC CARRYING CASE	O	1				
C10	417496-2	LATCH		2				
C20	417497-0	HANDLE		1				
C30	819143-5	MAKITA LABEL		1				

Please order the parts with part number.

Print Date 4/12/2023