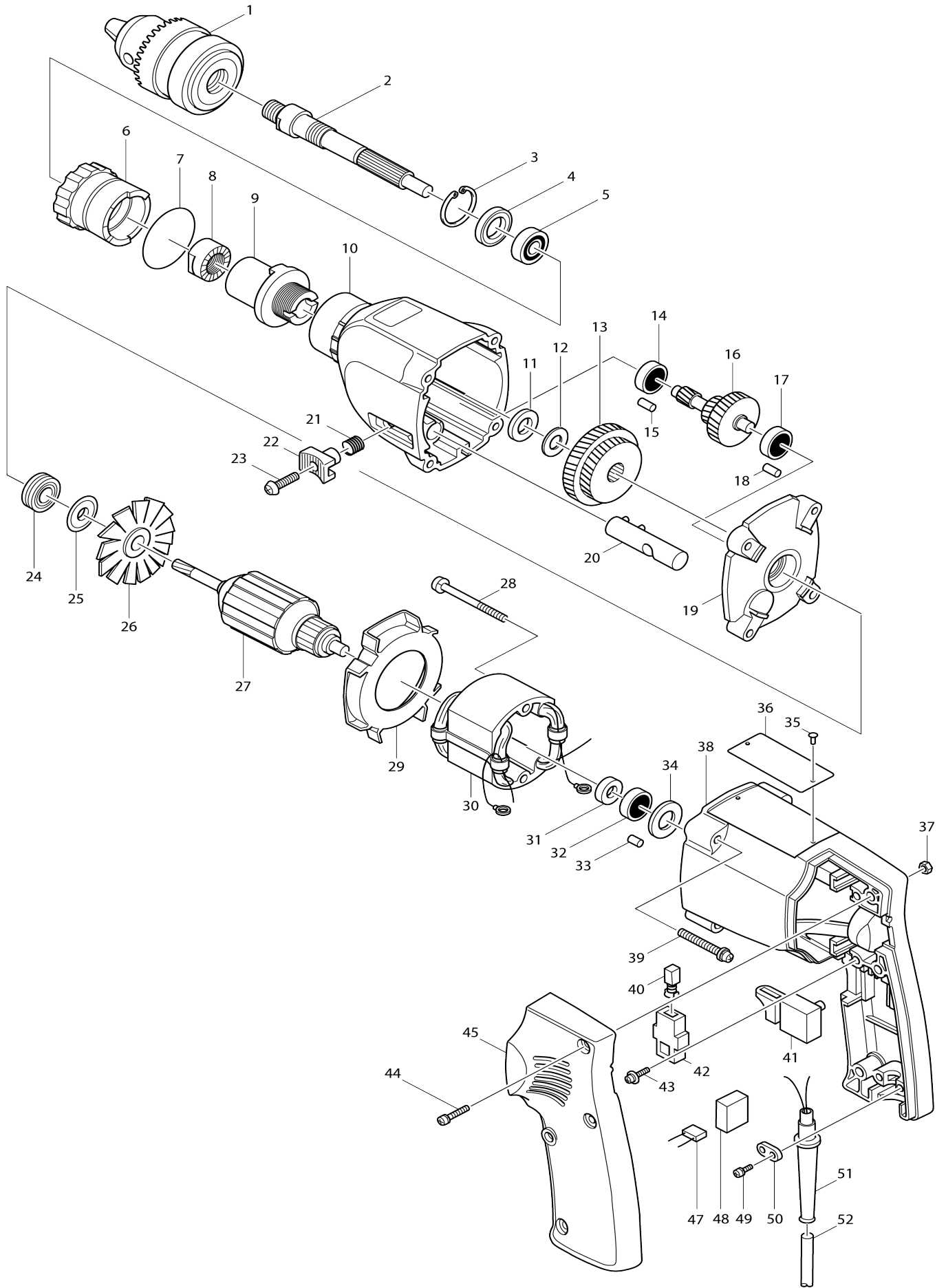


Model No.8419B2 2-SPEED HAMMER DRILL 19MM



Model No.8419B2 2-SPEED HAMMER DRILL 19MM

Item No.	Parts No.	Description	Interchangeability	Q'ty	New/Old	Note1	Note2
001-2	192877-8	DRILL CHUCK S13		1			
002	325551-5	SPINDLE		1			
003	962151-6	RETAINING RING R-32		1			
004	213301-9	DUST SEAL 20		1			
005	211201-7	BALL BEARING 6002LLB		1			
006	323679-3	CHANGE RING		1			
007	213458-6	O RING 34		1			
008	223029-1	CAM (A)		1			
009	223030-6	CAM (B)		1			
010	156440-1	GEAR HOUSING		1	*		
C10	816110-1	INDICATION LABEL		1	*		
C20	951104-0	SPRING PIN 4-12		1	*		
D10		INC. 15					
010-1	159690-7	GEAR HOUSING	X	1			
C10	816110-1	INDICATION LABEL		1			
C20	951104-0	SPRING PIN 4-12		1			
D10		INC. 15					
011-1	253798-0	FLAT WASHER 13		1			
012	961016-9	STOP RING E-10		1			
013	226038-9	GEAR COMPLETE 39-49		1			
014	211026-9	BALL BEARING 627LLB		1	*		
014-1	210025-8	BALL BEARING 627LLB	O	1			
015	263002-9	RUBBER PIN 4		1			
016	226039-7	GEAR COMPLETE 9-19-41		1			
017	211026-9	BALL BEARING 627LLB		1	*		
017-1	210025-8	BALL BEARING 627LLB	O	1			
018	263002-9	RUBBER PIN 4		1			
019	156441-9	GEAR HOUSING COVER		1			
C10	214002-2	PLANE BEARING 7.9		1			
D10		INC. 18					
020	152135-4	SHIFTER ROD		1			
C10	256054-7	PIN 4		2			
021	231249-3	COMPRESSION SPRING 5		1			
022	411475-2	CHANGE LEVER		1			
023	251429-5	- FLAT HEAD SCREW M4		1	*		
023-1	265029-5	+ PAN HEAD SCREW M4	O	1			
024	211043-9	BALL BEARING 807LLB		1			
025	213002-9	DUST SEAL 8		1			
026-1	241325-5	FAN 58		1			
027C_	515098-9	ARMATURE ASS'Y 220V		1			
D10		INC. 24-26,31,32					
028-1	911185-6	PAN HEAD SCREW M4X55		2			
029	411456-6	BAFFLE PLATE		1			
030C_	525088-4	FIELD ASS'Y 220V		1			
C10	654038-3	INSULATED TERMINAL FT1.25-M4		2	*		
C11	654037-5	INSULATED TERM. FT1.25-M3	O	2	*		
031	681614-0	INSULATION WASHER		1			

032	211028-5	BALL BEARING 627LB		1		
033-1	263013-4	RUBBER PIN 4		1		
034	253192-6	FLAT WASHER 14		1		
035	953106-2	RIVET 0-5		2		
036	815090-8	NAME PLATE 8419B-2		1		
037	931102-0	HEX. NUT M4		3		
038	156953-2	MOTOR HOUSING		1		
D10		INC. 33,37				
039	911268-2	PAN HEAD SCREW M5X45		4		
040	181026-2	CARBON BRUSH CB-55		1		
041H_	651235-2	SWITCH C2M-A1T		1	*	
041H 1	651225-5	SWITCH SGEL215C	S	1		
042	643551-6	BRUSH HOLDER 5-8		2		
043	911124-6	PAN HEAD SCREW M4X14		2		
044	911153-9	PAN HEAD SCREW M4X28		3		
045	411455-8	HANDLE COVER		1		
047E1	645208-5	NOISE SUPPRESSOR		1		
048B_	685700-9	SPONGE SHEET		1		
049-1	911133-5	PAN HEAD SCREW M4X18		2		
050C_	687031-2	STRAIN RELIEF		1		
051-1	682516-3	CORD GUARD 9.3-85		1		
052N 1	665865-3	POWER SUPPLY CORD 1.0-2-2.5		1		
400-4	273627-1	GRIP		1		
401	321059-7	DEPTH GAUGE		1		
402-4	924226-9	WING BOLT M5X20		1		
406-2	763432-9	CHUCK KEY S13		1		
407	410102-8	KEY HOLDER		1		
411-1	252635-5	NUT M8		1		
412-1	941202-8	FLAT WASHER 8		1		
413-1	921472-5	HEX. BOLT M8X50		1		
902-3	182617-2	STEEL CARRYING CASE		1	*	
C10	819033-2	MAKITA LABEL		1	*	
902-4	824608-4	PLASTIC CARRYING CASE	O	1		
C10	417496-2	LATCH		2		
C20	417497-0	HANDLE		1		
C30	819143-5	MAKITA LABEL		1		

Please state Parts No. when your order.

Print Date 10/25/2023