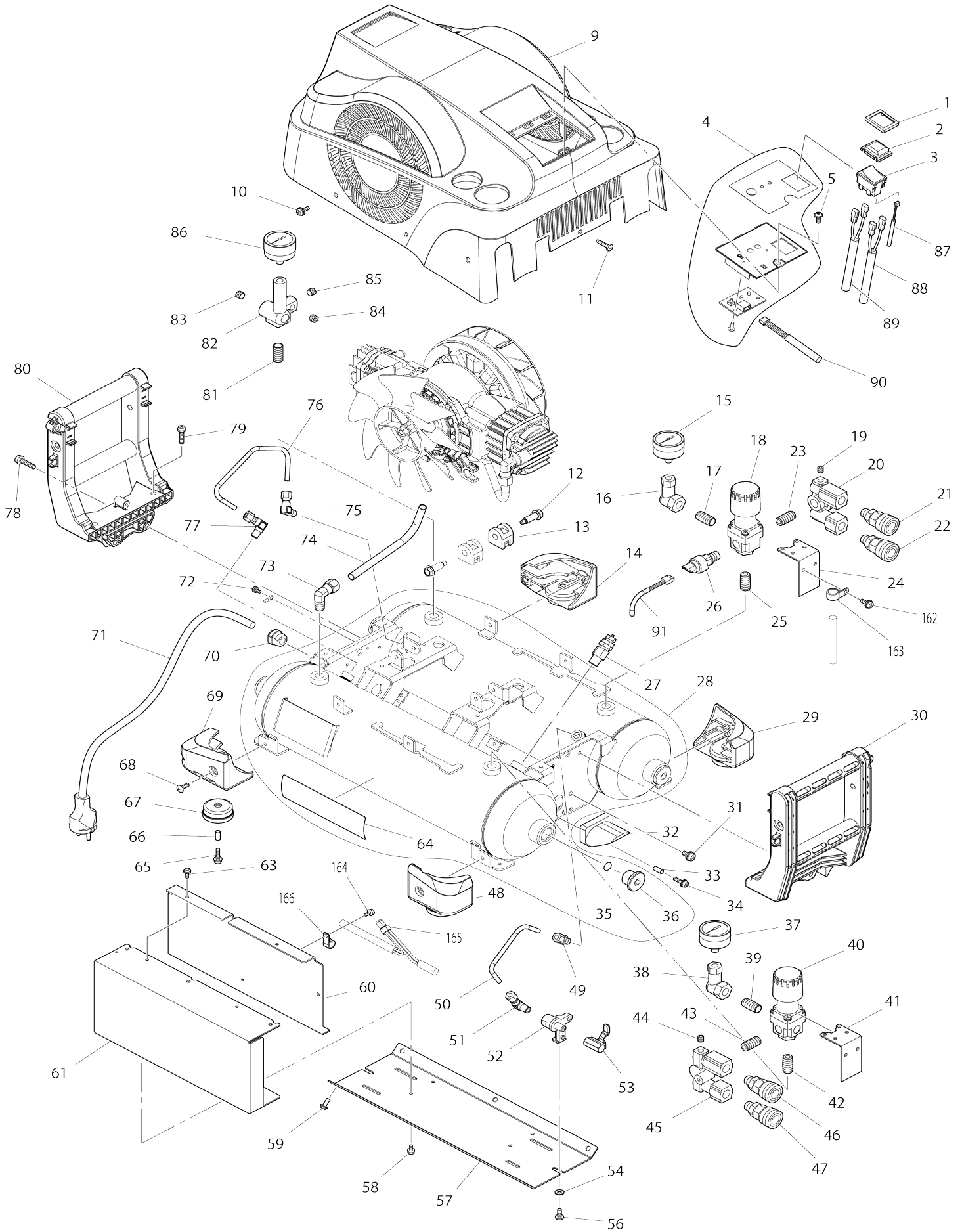
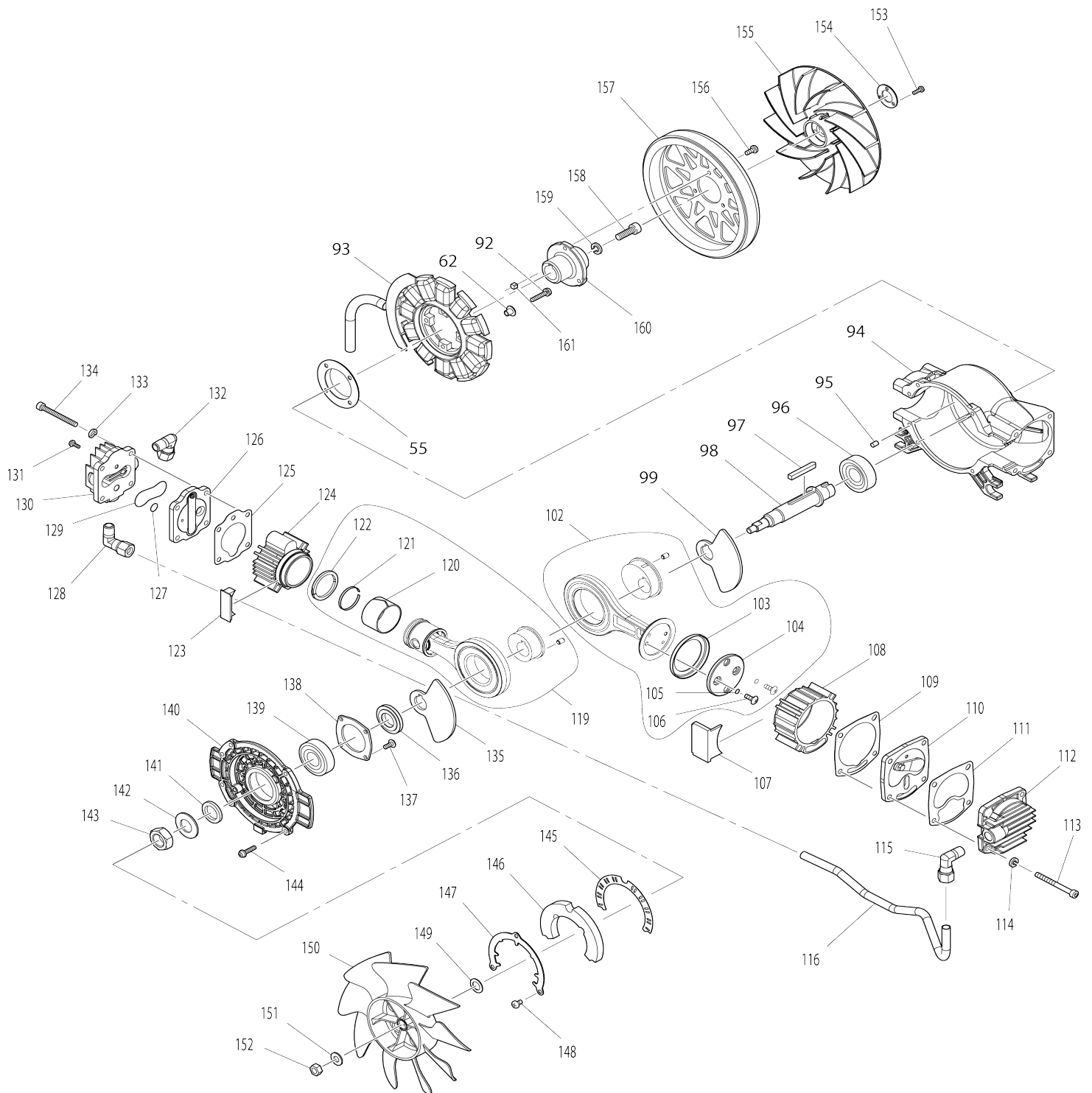


Model No.AC320H AIR COMPRESSOR



Model No.AC320H AIR COMPRESSOR



Model No.AC320H AIR COMPRESSOR

Item No.	Parts No.	Description	Interchangability	Q'ty	New/Old	Note1	Note2
001	AM1101239A	DUST COVER CAP		1			
002	AM1101238A	DUST COVER		1			
003	AM1101211A	SWITCH		1			
004	AM1101280A	OPERATION PANEL ASSY		1			
005	AM1101254A	+TAPPING SCREW 5		1			
009	AM1101232A	COVER COMPLETE, BLACK		1			
C10	AM1101245A	AC320H INDICATION LABEL		1			
C20	AM1101247A	NOISE LABEL		1			
C30	AM1101249A	INDICATION LABEL		1			
C40	AM1101250A	MAKITA LOGO LABEL		1			
010	AM1101231A	+PAN HEAD SCREW M5		6			
011	AM1101254A	+TAPPING SCREW 5		2			
012	AM0802354A	HEXAGONAL HEADED BOLT		4			
013	AM0802278A	CUSHION		4			
014	AM0801992A	CASTER COMPLETE R		1			
015	AM1101219A	PRESSURE GAUGE 35		1			
016	AM0801875C	PRESSURE GAUGE MANIFOLD		1			
017	AM0207700D	BARREL NIPPLE 1/4"		1	*		
017-1	AM00801599	BARREL NIPPLE R1/4	O	1	*		
017-2	AM0801599C	BARREL NIPPLE R1/4	<	1			
018	AM1101224A	REGULATOR H		1	*		
018-1	AM1101292A	REGULATOR H	S	1			
019	AM0801617B	TAPER SCREW PLUG 1/16		1			
020	AM0801874F	COUPLER MANIFOLD HIGH PRESSURE		1			
021	AM1101229A	QUICK COUPLER H R1/4		1			
022	AM1101229A	QUICK COUPLER H R1/4		1			
023	AM00801599	BARREL NIPPLE R1/4		1	*		
023-1	AM0801599C	BARREL NIPPLE R1/4	<	1			
024	AM1101208A	COVER PLATE		1			
025	AM00801599	BARREL NIPPLE R1/4		1	*		
025-1	AM0801599C	BARREL NIPPLE R1/4	<	1			
026	AM1101222A	PRESSURE SENSOR		1			
027	AM1101230A	RELIEF VALVE		1			
028	AM1101281A	TANK UNIT ASSY		1			
D10		INC.35.36.64					
029	AM0801324D	FOOT B		1			
030	AM1101221A	HANDLE		1			
031	AMAF350791	PAN HEAD SCREW M6X14		1			
032	AM1101209A	DRAIN GUARD		1			
033	344222-5	WOUND BUSH 5X13		2			
034	911234-9	PAN HEAD SCREW M5X20		2			
035	AM1101241A	O-RING P18		4			
036	AM1101240B	INSPECTION HOLE PLUG		4			
037	AM1101218A	PRESSURE GAUGE 15		1			
038	AM0801875C	PRESSURE GAUGE MANIFOLD		1			
039	AM0207700D	BARREL NIPPLE 1/4"		1	*		
039-1	AM00801599	BARREL NIPPLE R1/4	O	1	*		

039-2	AM0801599C	BARREL NIPPLE R1/4	<	1			
040	AM1101217A	REGULATOR L		1	*		
040-1	AM1101291A	REGULATOR L	S	1			
041	AM1101208A	COVER PLATE		1			
042	AM00801599	BARREL NIPPLE R1/4		1	*		
042-1	AM0801599C	BARREL NIPPLE R1/4	<	1			
043	AM00801599	BARREL NIPPLE R1/4		1	*		
043-1	AM0801599C	BARREL NIPPLE R1/4	<	1			
044	AM0801617B	TAPER SCREW PLUG 1/16		1			
045	AM0801873E	COUPLER MANIFOLD LOW PRESSURE		1			
046	AM1101228A	ONE TOUCH JOINT 20SM		1			
047	AM1101228A	ONE TOUCH JOINT 20SM		1			
048	AM0801313D	FOOT A		1			
049	AM0801899A	HALF UNION 6-R1/8		1			
050	AM1101251A	DRAIN PIPE		1			
051	AM0801897A	ELBOW 6-R1/8		1			
052	AM0801386D	DRAIN SOCKET		1			
053	AM0801307D	DRAIN COCK		1	*		
053-1	AM0802903A	DRAIN COCK	<	1	*		
053-2	AM0802903B	DRAIN COCK	O	1			
054	941101-4	FLAT WASHER 5		1			
055	AM1101278B	SPACER L		1			
056	AM0801895A	TAP TIGHT LOW-HEAD 5X12		1			
057	AM1101216A	UNDER GUARD		1			
058	911114-9	PAN HEAD SCREW M4X10		4			
059	AM1101231A	+PAN HEAD SCREW M5		6			
060	AM1101258A	DRIVER COVER		1			
061	AM1101226C	DRIVER		1			
062	AM1101279A	SPACER S		4			
063	911114-9	PAN HEAD SCREW M4X10		2			
064	AM0801971A	MAKITA LOGO LABEL		2			
065	911234-9	PAN HEAD SCREW M5X20		4			
066	344222-5	WOUND BUSH 5X13		4			
067	AM00801626	FOOT RUBBER		4	*		
067-1	AM0802687A	FOOT RUBBER	O	4			
068	AM0801431A	+TRUSS HEAD SCREW M5X14		4			
069	AM0801993A	CASTER COMPLETE L		1			
070	AM1101212A	CORD BUSHING		1			
071	AM1101220A	POWER SUPPLY COAD (EU)		1			
072	652014-1	PAN HEAD SCREW M4X8		1			
073	AM00801598	ELBOW 10-R1/4		1			
074	AM0802313A	PIPE 10		1			
075	AM0801897A	ELBOW 6-R1/8		1			
076	AM1101227A	PIPE 6		1			
077	AM0801897A	ELBOW 6-R1/8		1			
078	AM0801960A	+PAN HEAD SCREW M6X25		4			
079	AM0801960A	+PAN HEAD SCREW M6X25		4			
080	AM1101221A	HANDLE		1			
081	AM0207700D	BARREL NIPPLE 1/4"		1	*		
081-1	AM00801599	BARREL NIPPLE R1/4	O	1	*		
081-2	AM0801599C	BARREL NIPPLE R1/4	<	1			

082	AM0801876C	PRESSURE SWITCH MANIFOLD		1			
083	AM0502509B	PLUG R1/8		1			
084	AM0502509B	PLUG R1/8		1			
085	AM0502509B	PLUG R1/8		1			
086	AM1101213A	PRESSURE GAUGE 6.0		1			
087	AM1101252A	RESET HARNESS		1			
088	AM1101244A	SWITCH HARNESS		1			
089	AM1101253A	PLUG HARNESS		1			
090	AM1101242A	PANEL HARNESS		1			
091	AM1101223A	SENSOR HARNESS		1			
092	AMAF350774	+PAN HEAD SCREW M5		4			
093	AM1101225C	STATOR		1			
094	AM1101275A	CRANK CASE		1	*		
094-1	AM1101275B	CRANK CASE	<	1			
095	263005-3	RUBBER PIN 6		1	*		
096	AM0801886A	BALL BEARING 6204		1			
097	AM0801323A	KEY 6		1			
098	AM0802277A	MOTOR SHAFT		1			
099	AM0802274A	BALANCER		1	*		
099-1	AM0802274A	BALANCER	O	1			
102	AM1101282A	LOCKING PISTON COMPLETE		1	*		
D10		INC.103-106					
102-1	AM1101287A	LOCKING PISTON COMPLETE	<	1	*		
D10		INC.103-106					
102-2	AM1101287B	LOCKING PISTON COMPLETE	<	1	*		
D10		INC.103-106					
102-3	AM1101287C	LOCKING PISTON COMPLETE	<	1			
D10		INC.103-106					
103	AM0801905A	LIP RING		1			
104	AM0503188E	FIXED RING		1			
105	AM00503229	O-RING S5		2			
106	AM00503242	+TRUSS HEAD SCREW M5X14		2			
107	AM0802281A	STUFFING L		1			
108	AM0802344A	CYLINDER L		1			
109	AM0801359F	CYLINDER GASKET L		1			
110	AM0802119A	BULB PLATE COMPLETE L		1			
111	AM0801361F	HEAD GASKET L		1			
112	AM0801363D	CYLINDER HEAD L		1			
113	AM00801591	HEX SOCKET HEAD BOLT M6X60		4			
114	942151-2	SPRING WASHER 6		4			
115	AM00801598	ELBOW 10-R1/4		1			
116	AM1101273A	PIPE 10		1			
119	AM1101283A	PISTON ASSY		1	*		
D10		INC. 120-122					
119-1	AM1101288A	PISTON ASSY	<	1	*		
D10		INC. 120-122					
119-2	AM1101288B	PISTON ASSY	<	1	*		
D10		INC. 120-122					
119-3	AM1101288C	PISTON ASSY	<	1	*		
D10		INC. 120-122					
120	AM0802258A	WEARING		1			

121	AM0802256A	LEAF SPRING 94 H		1		
122	AM0802257A	SHEET RING 41		1	*	
122-1	262203-6	SEAT RING 41	O	1		
123	AM0802282A	STUFFING H		1		
124	AM0802252A	CYLINDER H		1		
125	AM0802268A	CYLINDER GASKET H		1		
126	AM0802326A	BULB PLATE COMPLETE H		1		
127	AM00801589	O-RING S12		1		
128	AM00801598	ELBOW 10-R1/4		1		
129	AM00801578	O-RING S42		1		
130	AM0802323A	HEAD UNIT		1	*	
130-1	AM0802507A	HEAD UNIT	O	1		
131	AMAF456457	TAPPING SCREW 4X12		1		
132	AM00801598	ELBOW 10-R1/4		1		
133	942151-2	SPRING WASHER 6		4		
134	AM00801591	HEX SOCKET HEAD BOLT M6X60		4		
135	AM0802274A	BALANCER		1	*	
135-1	AM0802274A	BALANCER	O	1		
136	AM0802356A	SPACER		1	*	
136-1	257499-2	SPACER	O	1		
137	AM0801895A	TAP TIGHT LOW-HEAD 5X12		4		
138	AM0801717B	BEARING RETAINER F 41.5		1		
139	AM0801886A	BALL BEARING 6204		1		
140	AM0802276A	BEARING CASE F		1	*	
140-1	AM0802276B	BEARING CASE F	O	1		
141	AM0801884A	BEARING SPACER		1		
142	AM0801442B	CONED DISC SPRING 18		1		
143	AMAF430730	HEX NUT M18		1		
144	911234-9	PAN HEAD SCREW M5X20		6		
145	AM0802290A	FILTER GASKET		1		
146	AM0802284A	FILTER		1		
147	AM0802283A	FILTER COVER		1		
148	AM00502451	+TAPPING SCREW 5X8		3		
149	253744-3	FLAT WASHER 12		1		
150	AM0801391E	FAN 190		1		
151	941201-0	FLAT WASHER 8		1		
152	931402-8	HEX. NUT M8		1		
153	AMAF350385	+PAN HEAD SCREW M4X12		3		
154	AM0801889A	PLATE, TURBO		1		
155	AM0801926B	TURBO FAN		1		
156	AMAF350767	+PAN HEAD SCREW M5X10		3		
157	AM0802028A	ROTOR		1		
158	AM0801940A	HEX SOCKET HEAD BOLT M8X25		1		
159	AMAF450405	SPRING WASHER 8		1		
160	AM1101276A	ROTOR SPACER		1		
161	AM0802279A	KEY 6		1		
162	AMAF350767	+PAN HEAD SCREW M5X10		1		
163	AM1101272A	CABLE CLIP NE-8		1		
164	911114-9	PAN HEAD SCREW M4X10		1		
165	AM1101270A	CLOSED-END CONNECTOR		2		
166	AM1101271A	CABLE CLIP NE-6		1		
167	AM1101286A	SWITCH COVER		1		

168	AM1101290A	WASHER M4	S	2			
169	AM1101290A	WASHER M4	S	2			

Please state Parts No. when your order.

Print Date 10/10/2023