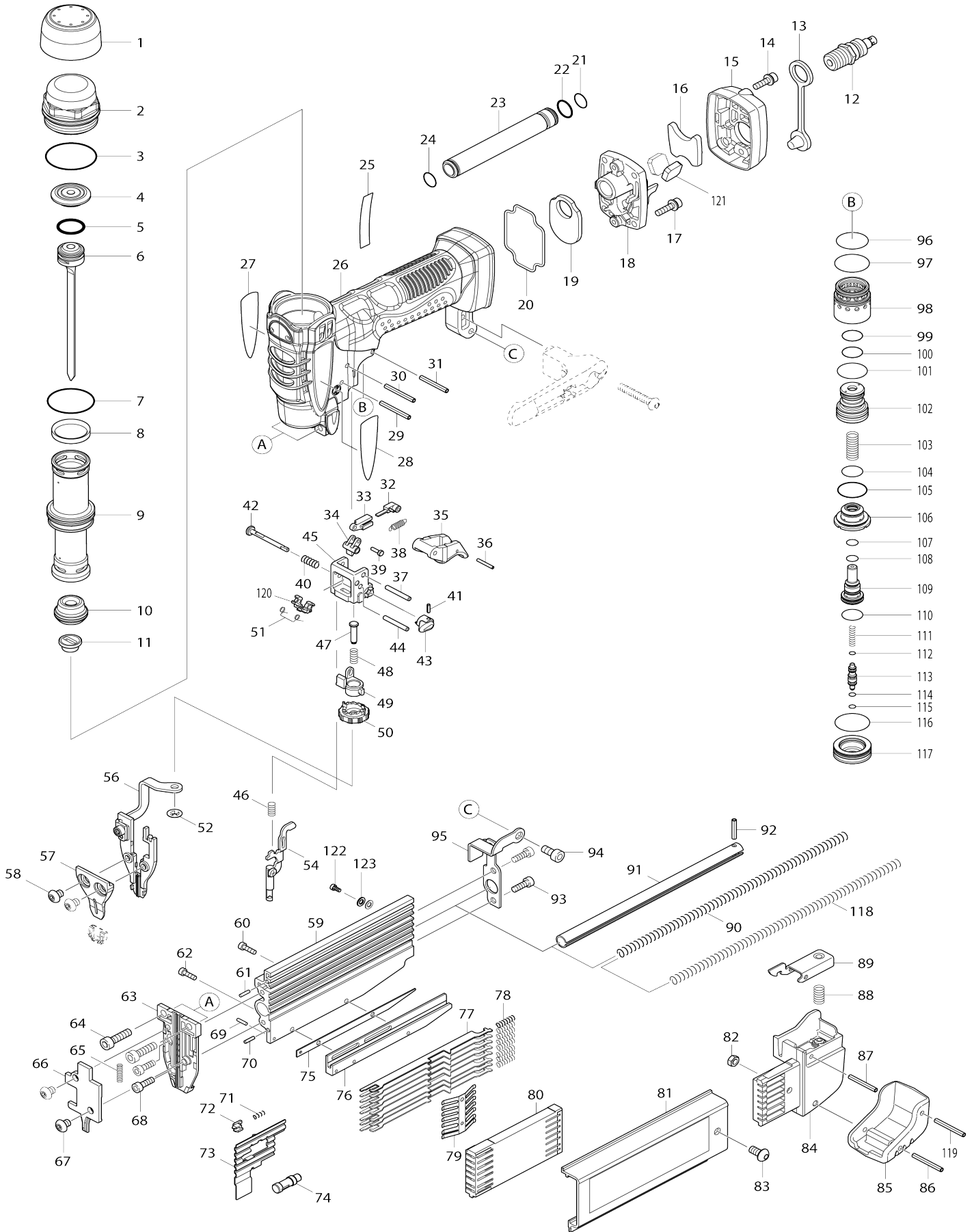


Model No.AF500HP PIN NAILER



Model No.AF500HP PIN NAILER

| Item No. | Parts No. | Description | Interchangeability | Q'ty | New/Old | Note1 | Note2 |
|----------|-----------|-----------------------------|--------------------|------|---------|-------|-------|
| 001 | 450628-8 | Top cap cover (black) | | 1 | | | |
| 002 | 318284-9 | TOP CAP | | 1 | | | |
| 003 | 213487-9 | O RING 31 | | 1 | | | |
| 004 | 424120-0 | REAR CUSHION | | 1 | * | | |
| 004-1 | 424947-8 | REAR CUSHION | O | 1 | | | |
| 005 | 213190-2 | O-RING 14 | | 1 | | | |
| 006 | 158681-5 | Driver complete | | 1 | | | |
| 007 | 213412-0 | O RING 29 | | 1 | | | |
| 008 | 424116-1 | D-RING 21.5 | | 1 | | | |
| 009 | 331829-6 | Cylinder | | 1 | | | |
| 010 | 424130-7 | FRONT CUSHION | | 1 | | | |
| 011 | 424118-7 | Front seal | | 1 | | | |
| 012 | 243105-5 | ONE-TOUCH JOINT H22PM | | 1 | | | |
| 013 | 286280-4 | CAP 9 | | 1 | | | |
| 014 | 265353-6 | HEX. SOCKET HEAD BOLT M4X12 | | 2 | | | |
| 015 | 450632-7 | Exhaust cover (black) | | 1 | | | |
| 016 | 413123-9 | FILTER | | 1 | | | |
| 017 | 922127-5 | HEX. SOCKET HEAD BOLT M4X16 | | 4 | | | |
| 018 | 318287-3 | INLET CAP | | 1 | | | |
| 019 | 413122-1 | INLET FILTER | | 1 | | | |
| 020 | 424117-9 | Seal ring | | 1 | | | |
| 021 | 213194-4 | O-RING 9.5 | | 1 | | | |
| 022 | 213105-9 | O RING 11 | | 1 | | | |
| 023 | 331832-7 | PIPE | | 1 | | | |
| 024 | 213194-4 | O-RING 9.5 | | 1 | | | |
| 025 | 865252-8 | Name plate AF500HP | | 1 | | | |
| 026 | 188601-5 | Housing set | | 1 | | | |
| D10 | | INC. 27,28 | | | | | |
| 027 | 819313-6 | Makita logo label R | | 1 | | | |
| 028 | 819314-4 | Makita logo label L | | 1 | | | |
| 029 | 951075-1 | SPRING PIN 3-28 | | 1 | | | |
| 030 | 951075-1 | SPRING PIN 3-28 | | 1 | | | |
| 031 | 258037-3 | SPRING PIN 3-26 | | 1 | | | |
| 032 | 310263-3 | IDLER | | 1 | | | |
| 033 | 310296-8 | IDLER GUIDE | | 1 | | | |
| 034 | 310267-5 | Link block | | 1 | * | | |
| 034-1 | 310312-6 | Link block | S | 1 | | | |
| 035 | 450633-5 | Trigger | | 1 | | | |
| 036 | 951010-9 | SPRING PIN 2-14 | | 1 | | | |
| 037 | 256221-4 | PIN 3 | | 1 | | | |
| 038 | 231856-2 | TENSION SPRING 4 | | 1 | | | |
| 039 | 268218-1 | PIN 2 | | 1 | | | |
| 040 | 231309-1 | COMPRESSION SPRING 5 | | 1 | | | |
| 041 | 951001-0 | SPRING PIN 2-8 | | 1 | | | |
| 042 | 324948-5 | Lock pin | | 1 | | | |
| 043 | 450786-0 | Knob | | 1 | | | |
| 044 | 256221-4 | PIN 3 | | 1 | | | |
| | | | | | | | |

| | | | | | | | |
|-------|----------|-----------------------------------|---|---|---|--|--|
| 045 | 451027-7 | Trigger base | | 1 | * | | |
| 045-1 | 451332-2 | Trigger base | S | 1 | | | |
| 046 | 234067-8 | COMPRESSION SPRING 5 | | 1 | | | |
| 047 | 268219-9 | Headed shoulder pin 4 | | 1 | * | | |
| 047-1 | 268243-2 | Headed shoulder pin 4 | < | 1 | | | |
| 048 | 234100-6 | Compression spring 6 | | 1 | | | |
| 049 | 310265-9 | Stopper | | 1 | * | | |
| 049-1 | 310313-4 | Stopper | < | 1 | | | |
| 050 | 310286-1 | Adjuster | | 1 | | | |
| 051 | 233533-2 | Torsion spring 4 | | 1 | | | |
| 052 | 259009-1 | PUSH NUT 3 | | 1 | | | |
| 054 | 165567-6 | ARM | | 1 | | | |
| 056 | 158682-3 | Contact arm complete | | 1 | * | | |
| 056-1 | 140582-1 | Contact arm complete | O | 1 | | | |
| 057 | 310261-7 | Contact top cover | | 1 | | | |
| 058 | 266450-1 | Hex socket button head bolt M5 X6 | | 2 | * | | |
| 058-1 | 266577-7 | Hex socket button head bolt M5 X6 | < | 2 | | | |
| 059 | 331826-2 | Magazine | | 1 | | | |
| 060 | 266177-3 | HEX. SOCKET HEAD BOLT M3X10 | | 1 | | | |
| 061 | 951001-0 | SPRING PIN 2-8 | | 1 | | | |
| 062 | 266177-3 | HEX. SOCKET HEAD BOLT M3X10 | | 1 | | | |
| 063 | 310259-4 | DRIVER GUIDE | | 1 | | | |
| 064 | 265853-6 | HEX. SOCKET HEAD BOLT M5X18 | | 2 | | | |
| 065 | 234119-5 | COMPRESSION SPRING 3 | | 1 | | | |
| 066 | 310260-9 | Driver guide cover | | 1 | | | |
| 067 | 266450-1 | Hex socket button head bolt M5 X6 | | 2 | * | | |
| 067-1 | 266577-7 | Hex socket button head bolt M5 X6 | < | 2 | | | |
| 068 | 265353-6 | HEX. SOCKET HEAD BOLT M4X12 | | 2 | | | |
| 069 | 951001-0 | SPRING PIN 2-8 | | 1 | | | |
| 070 | 951001-0 | SPRING PIN 2-8 | | 1 | | | |
| 071 | 233018-8 | COMPRESSION SPRING 3 | | 1 | | | |
| 072 | 310176-8 | STOPPER | | 1 | | | |
| 073 | 345947-4 | PUSHER | | 1 | | | |
| 074 | 450627-0 | SHOULDER PIN 5-7 | | 1 | | | |
| 075 | 345945-8 | SPACER | | 1 | | | |
| 076 | 331827-0 | LOWER RAIL | | 1 | | | |
| 077 | 345946-6 | NAIL STOPPER | | 7 | | | |
| 078 | 233476-8 | COMPRESSION SPRING 4 | | 7 | | | |
| 079 | 232243-8 | LEAF SPRING | | 1 | | | |
| 080 | 450624-6 | NAIL GUIDE HOLDER | | 1 | | | |
| 081 | 158749-7 | Upper rail complete | | 1 | | | |
| C10 | 810418-5 | CAUTION LABEL | | 1 | | | |
| 082 | 931102-0 | HEX. NUT M4 | | 1 | | | |
| 083 | 266430-7 | H.S. BUTTON HEAD BOLT M4X8 | | 1 | | | |
| 084 | 450625-4 | SLIDE DOOR CAP | | 1 | | | |
| 085 | 424113-7 | MAGAZINE BUMPER | | 1 | | | |
| 086 | 951075-1 | SPRING PIN 3-28 | | 1 | | | |
| 087 | 951072-7 | SPRING PIN 3-24 | | 1 | | | |
| 088 | 233097-6 | COMPRESSION SPRING 7 | | 1 | | | |

| | | | | | | |
|-------|----------|-----------------------------|---|---|---|--|
| 089 | 345954-7 | LOCK LEVER | | 1 | | |
| 090 | 234066-0 | COMPRESSION SPRING 6 | | 1 | | |
| 091 | 345948-2 | GUIDE PIPE | | 1 | | |
| 092 | 951063-8 | SPRING PIN 3-16 | | 1 | | |
| 093 | 265353-6 | HEX. SOCKET HEAD BOLT M4X12 | | 2 | | |
| 094 | 265909-5 | HEX. SOCKET HEAD BOLT M5X14 | | 1 | | |
| 095 | 345949-0 | JOINT | | 1 | | |
| 096 | 213310-8 | O RING 20 | | 1 | | |
| 097 | 213373-4 | O RING 22 | | 1 | | |
| 098 | 331831-9 | TRIGGER VALVE GUIDE A | | 1 | | |
| 099 | 213137-6 | O-RING 11.2 | | 1 | | |
| 100 | 213191-0 | O-ring 12.5 | | 1 | | |
| 101 | 213262-3 | O RING 18 | | 1 | | |
| 102 | 412091-3 | Main valve | | 1 | | |
| 103 | 234070-9 | COMPRESSION SPRING 7 | | 1 | | |
| 104 | 213122-9 | O RING 12 | | 1 | | |
| 105 | 213275-4 | O RING 18 | | 1 | | |
| 106 | 324912-6 | TRIGGER VALVE GUIDE B | | 1 | | |
| 107 | 213998-4 | O-RING 6 | | 1 | | |
| 108 | 213998-4 | O-RING 6 | | 1 | | |
| 109 | 451204-1 | Pilot valve | | 1 | * | |
| 109-1 | 326353-2 | PILOT VALVE | S | 1 | | |
| 110 | 213122-9 | O RING 12 | | 1 | | |
| 111 | 234068-6 | COMPRESSION SPRING 3 | | 1 | | |
| 112 | 213979-8 | O-RING 3 | | 1 | * | |
| 112-1 | 213640-7 | O-RING 3 | S | 1 | | |
| 113 | 325691-9 | TRIGGER VALVE STEM | | 1 | | |
| 114 | 213979-8 | O-RING 3 | | 1 | * | |
| 114-1 | 213640-7 | O-RING 3 | S | 1 | | |
| 115 | 213979-8 | O-RING 3 | | 1 | | |
| 116 | 213373-4 | O RING 22 | | 1 | | |
| 117 | 325633-3 | TRIGGER VALVE CASE | | 1 | | |
| 118 | 234110-3 | Compression spring 5 | | 1 | | |
| 119 | 951075-1 | SPRING PIN 3-28 | | 1 | | |
| 120 | 310284-5 | Link lever | | 1 | | |
| 121 | 413125-5 | FILTER B | | 2 | | |
| 122 | 265591-0 | Hex socket head bolt M3X4.5 | | 1 | | |
| 123 | 941002-6 | FLAT WASHER 3 | | 2 | | |
| A01 | 192517-8 | SAFETY GOGGLE | | 1 | * | |
| A01-1 | 195246-2 | SAFETY GOGGLE | < | 1 | * | |
| A02 | 194381-3 | OIL SUPPLY SET | | 1 | | |
| A03 | 266100-8 | HEX. SOCKET HEAD BOLT M5X30 | | 1 | | |
| A04 | 415000-1 | HOOK | | 1 | * | |
| A04-1 | 452213-3 | HOOK | O | 1 | | |
| A05 | 450626-2 | Nose adapter | | 2 | | |
| A06 | 783201-2 | HEX. WRENCH 3 | | 1 | | |
| A07 | 824858-1 | PLASTIC CARRYING CASE | | 1 | | |
| C10 | 186347-7 | SLIDE LATCH SET | | 1 | | |

Please state Parts No. when your order.

Print Date 10/24/2023