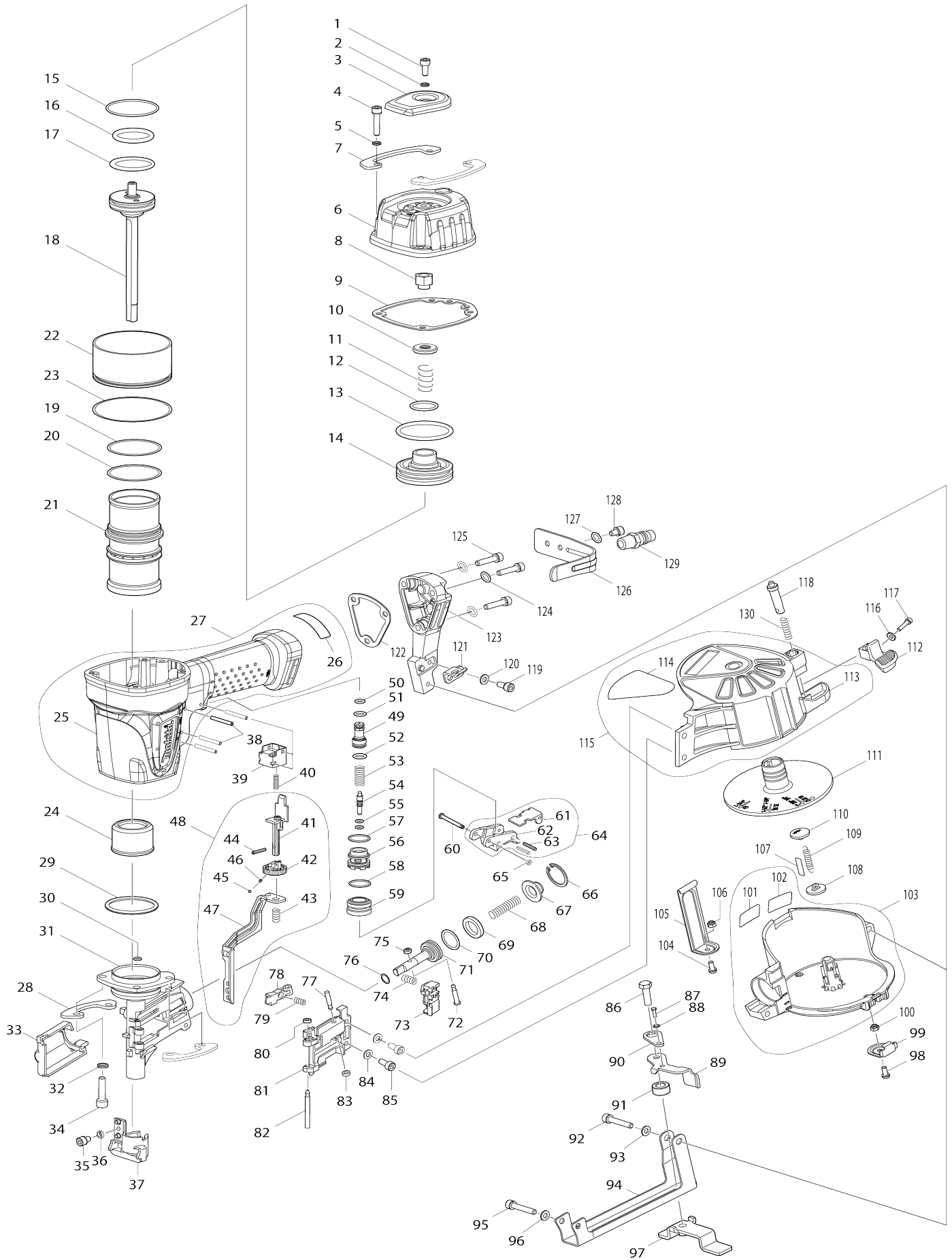


Model No.AN453 PNEUMATIC ROOFING COIL NAILER



Model No.AN453 PNEUMATIC ROOFING COIL NAILER

| Item No. | Parts No. | Description | Interchangability | Q'ty | New/Old | Note1 | Note2 |
|----------|------------|----------------------------|-------------------|------|---------|-------|-------|
| 001 | HY00000155 | HEX.SOCKET HEAD BOLT M5X12 | | 1 | | | |
| 002 | HY00000162 | SPRING WASHER 5 | | 1 | | | |
| 003 | HY00000191 | EXHAUST COVER | | 1 | | | |
| 004 | HY00000156 | HEX.SOCKET HEAD BOLT M5X25 | | 4 | | | |
| 005 | HY00000162 | SPRING WASHER 5 | | 4 | | | |
| 006 | HY00000172 | TOP CAP | | 1 | | | |
| 007 | HY00000193 | REAR HOUSING GUARD | | 2 | * | | |
| 007-1 | HY00000367 | REAR HOUSING GUARD | S | 2 | | | |
| 008 | HY00000073 | HEX.LOCK NUT M5 | | 1 | | | |
| 009 | HY00000197 | TOP CAP GASKET | | 1 | | | |
| 010 | HY00000205 | CUSHION V | | 1 | | | |
| 011 | HY00000151 | COMPRESSION SPRING 10 | | 1 | | | |
| 012 | HY00000138 | O-RING 21 | | 1 | | | |
| 013 | HY00000141 | O-RING 45 | | 1 | | | |
| 014 | HY00000177 | HEAD VALVE | | 1 | | | |
| 015 | HY00000140 | O-RING 42 | | 1 | | | |
| 016 | HY00000144 | O-RING 30 | | 1 | | | |
| 017 | HY00000139 | O-RING 35 | | 1 | | | |
| 018 | HY00000106 | DRIVER COMPLETE | | 1 | | | |
| 019 | HY00000142 | O-RING 45 | | 2 | * | | |
| 019-1 | HY00000142 | O-RING 45 | O | 1 | | | |
| 020 | HY00000141 | O-RING 45 | | 1 | | | |
| 021 | HY00000176 | CYLINDER | | 1 | | | |
| 022 | HY00000202 | CYLINDER SEPARATER | | 1 | | | |
| 023 | HY00000143 | O-RING 67 | | 1 | | | |
| 024 | HY00000204 | CUSHION F | | 1 | | | |
| 025 | HY00000104 | HOUSING COMPLETE | | 1 | | | |
| 028 | HY00000192 | FRONT HOUSING GUARD | | 2 | | | |
| 029 | HY00000133 | O-RING 42 | | 1 | | | |
| 030 | HY00000130 | O-RING 5 | | 1 | | | |
| 031 | HY00000102 | DRIVER GUIDE COMPLETE | | 1 | | | |
| 032 | HY00000163 | SPRING WASHER 6 | | 4 | | | |
| 033 | HY00000201 | COVER | | 1 | | | |
| 034 | HY00000157 | HEX.SOCKET HEAD BOLT M6X25 | | 4 | | | |
| 035 | HY00000154 | HEX.SOCKET HEAD BOLT M5X8 | | 1 | | | |
| 036 | HY00000162 | SPRING WASHER 5 | | 1 | | | |
| 037 | HY00000127 | CONTACT TOP | | 1 | | | |
| 038 | HY00000165 | SPRING PIN 3-28 | | 4 | | | |
| 039 | HY00000194 | HOLDER | | 1 | | | |
| 040 | HY00000149 | COMPRESSION SPRING 7 | | 1 | | | |
| 041 | HY00000110 | STOPPER | | 1 | | | |
| 042 | HY00000109 | ADJUSTER | | 1 | | | |
| 043 | HY00000113 | COMPRESSION SPRING 7 | | 1 | | | |
| 044 | HY00000114 | SPRING PIN 2.5-16 | | 1 | | | |
| 045 | HY00000112 | STEEL BALL 2.3 | | 1 | | | |
| 046 | HY00000111 | COMPRESSION SPRING 2 | | 1 | | | |
| 047 | HY00000108 | CONTACT ARM | | 1 | | | |
| | | | | | | | |

| | | | | | | |
|-----|------------|----------------------------|--|---|--|--|
| 048 | HY00000107 | CONTACT ARM ASSY | | 1 | | |
| 049 | HY00000182 | PILOT VALVE | | 1 | | |
| 050 | HY00000131 | O-RING 6 | | 1 | | |
| 051 | HY00000132 | O-RING 7 | | 1 | | |
| 052 | HY00000134 | O-RING 9 | | 1 | | |
| 053 | HY00000146 | COMPRESSION SPRING 4 | | 1 | | |
| 054 | HY00000178 | TRIGGER VALVE STEM | | 1 | | |
| 055 | HY00000037 | O-RING 3 | | 2 | | |
| 056 | HY00000203 | TRIGGER VALVE GUIDE | | 1 | | |
| 057 | HY00000135 | O-RING 15 | | 1 | | |
| 058 | HY00000137 | O-RING 17 | | 1 | | |
| 059 | HY00000183 | TRIGGER VALVE CASE | | 1 | | |
| 060 | HY00000045 | PIN 3 | | 1 | | |
| 061 | HY00000117 | IDLER | | 1 | | |
| 062 | HY00000116 | TRIGGER | | 1 | | |
| 063 | HY00000053 | SPRING PIN 2.5-16 | | 2 | | |
| 064 | HY00000115 | TRIGGER ASSY | | 1 | | |
| 065 | HY00000043 | RUBBER RING 2 | | 1 | | |
| 066 | HY00000164 | RETAINING RING R-24 | | 1 | | |
| 067 | HY00000187 | CUP WASHER 5 | | 1 | | |
| 068 | HY00000150 | COMPRESSION SPRING 7 | | 1 | | |
| 069 | HY00000207 | RUBBER RING 16 | | 1 | | |
| 070 | HY00000136 | O-RING 17 | | 1 | | |
| 071 | HY00000179 | PISTON | | 1 | | |
| 072 | HY00000168 | PIN 4 | | 1 | | |
| 073 | HY00000170 | FEEDING CLAW | | 1 | | |
| 074 | HY00000148 | COMPRESSION SPRING 6 | | 1 | | |
| 075 | HY00000206 | URETHAN RING 3 | | 1 | | |
| 076 | HY00000129 | O-RING 8 | | 1 | | |
| 077 | HY00000166 | PIN 4 | | 1 | | |
| 078 | HY00000169 | CHECK CLAW | | 1 | | |
| 079 | HY00000147 | COMPRESSION SPRING 4 | | 1 | | |
| 080 | HY00000206 | URETHAN RING 3 | | 3 | | |
| 081 | HY00000171 | DOOR | | 1 | | |
| 082 | HY00000167 | PIN 4 | | 1 | | |
| 083 | HY00000206 | URETHAN RING 3 | | 1 | | |
| 084 | HY00000160 | FLAT WASHER 5 | | 2 | | |
| 085 | HY00000155 | HEX.SOCKET HEAD BOLT M5X12 | | 2 | | |
| 086 | HY00000158 | HEX.BOLT M6X20 | | 1 | | |
| 087 | HY00000153 | PAN HEAD SCREW M4X10 | | 1 | | |
| 088 | HY00000161 | SPRING WASHER 4 | | 1 | | |
| 089 | HY00000185 | LEVER PLATE | | 1 | | |
| 090 | HY00000184 | LOCK PLATE | | 1 | | |
| 091 | HY00000181 | RING 9 | | 1 | | |
| 092 | HY00000075 | HEX.SOCKET HEAD BOLT M5X30 | | 1 | | |
| 093 | HY00000162 | SPRING WASHER 5 | | 1 | | |
| 094 | HY00000186 | SINGLE GUIDE | | 1 | | |
| 095 | HY00000075 | HEX.SOCKET HEAD BOLT M5X30 | | 1 | | |
| 096 | HY00000162 | SPRING WASHER 5 | | 1 | | |
| 097 | HY00000128 | ADJUSTER PLATE | | 1 | | |
| 098 | HY00000153 | PAN HEAD SCREW M4X10 | | 1 | | |
| 099 | HY00000189 | MAGAZINE GUARD L | | 1 | | |

| | | | | | | |
|-------|------------|----------------------------|---|---|---|--|
| 100 | HY00000159 | HEX. LOCK NUT M4 | | 1 | | |
| 101 | HY00000122 | CAUTION LABEL | | 1 | | |
| 102 | HY00000123 | CAUTION LABEL | | 1 | | |
| 103 | HY00000119 | MAGAZINE COMPLETE | | 1 | | |
| 104 | HY00000153 | PAN HEAD SCREW M4X10 | | 1 | | |
| 105 | HY00000188 | MAGAZINE GUARD R | | 1 | | |
| 106 | HY00000159 | HEX. LOCK NUT M4 | | 1 | | |
| 107 | HY00000208 | RUBBER PLATE 6-19 | | 1 | | |
| 108 | HY00000198 | HOLDER CAP | | 1 | | |
| 109 | HY00000145 | TENSION SPRING 5 | | 1 | | |
| 110 | HY00000198 | HOLDER CAP | | 1 | | |
| 111 | HY00000200 | CHANGE PLATE | | 1 | | |
| 112 | HY00000199 | LOCK LEVER | | 1 | | |
| 113 | HY00000125 | MAGAZINE CAP | | 1 | | |
| 116 | HY00000162 | SPRING WASHER 5 | | 1 | | |
| 117 | HY00000154 | HEX.SOCKET HEAD BOLT M5X8 | | 1 | | |
| 118 | HY00000180 | LOCK PIN | | 1 | | |
| 119 | HY00000155 | HEX.SOCKET HEAD BOLT M5X12 | | 1 | | |
| 120 | HY00000162 | SPRING WASHER 5 | | 1 | | |
| 121 | HY00000190 | MAGAZINE LOCK | | 1 | | |
| 122 | HY00000196 | INLET CAP GASKET | | 1 | | |
| 123 | HY00000174 | INLET CAP | | 1 | | |
| 124 | HY00000162 | SPRING WASHER 5 | | 3 | | |
| 125 | HY00000156 | HEX.SOCKET HEAD BOLT M5X25 | | 3 | | |
| 126 | HY00000195 | HOOK | | 1 | | |
| 127 | HY00000162 | SPRING WASHER 5 | | 1 | | |
| 128 | HY00000155 | HEX.SOCKET HEAD BOLT M5X12 | | 1 | | |
| 129 | HY00000081 | ONE TOUCH JOINT | | 1 | | |
| 130 | HY00000152 | COMPRESSION SPRING 8 | | 1 | | |
| 131 | HY00000368 | REAR BUMPER | S | 2 | | |
| A01 | 192517-8 | SAFETY GOGGLE | | 1 | * | |
| A01-1 | 195246-2 | SAFETY GOGGLE | < | 1 | | |
| A02 | 181434-7 | OIL SUPPLY 30CC | | 1 | | |
| A03 | 783202-0 | HEX. WRENCH 4 | | 1 | | |

Please state Parts No. when your order.

Print Date 10/10/2023