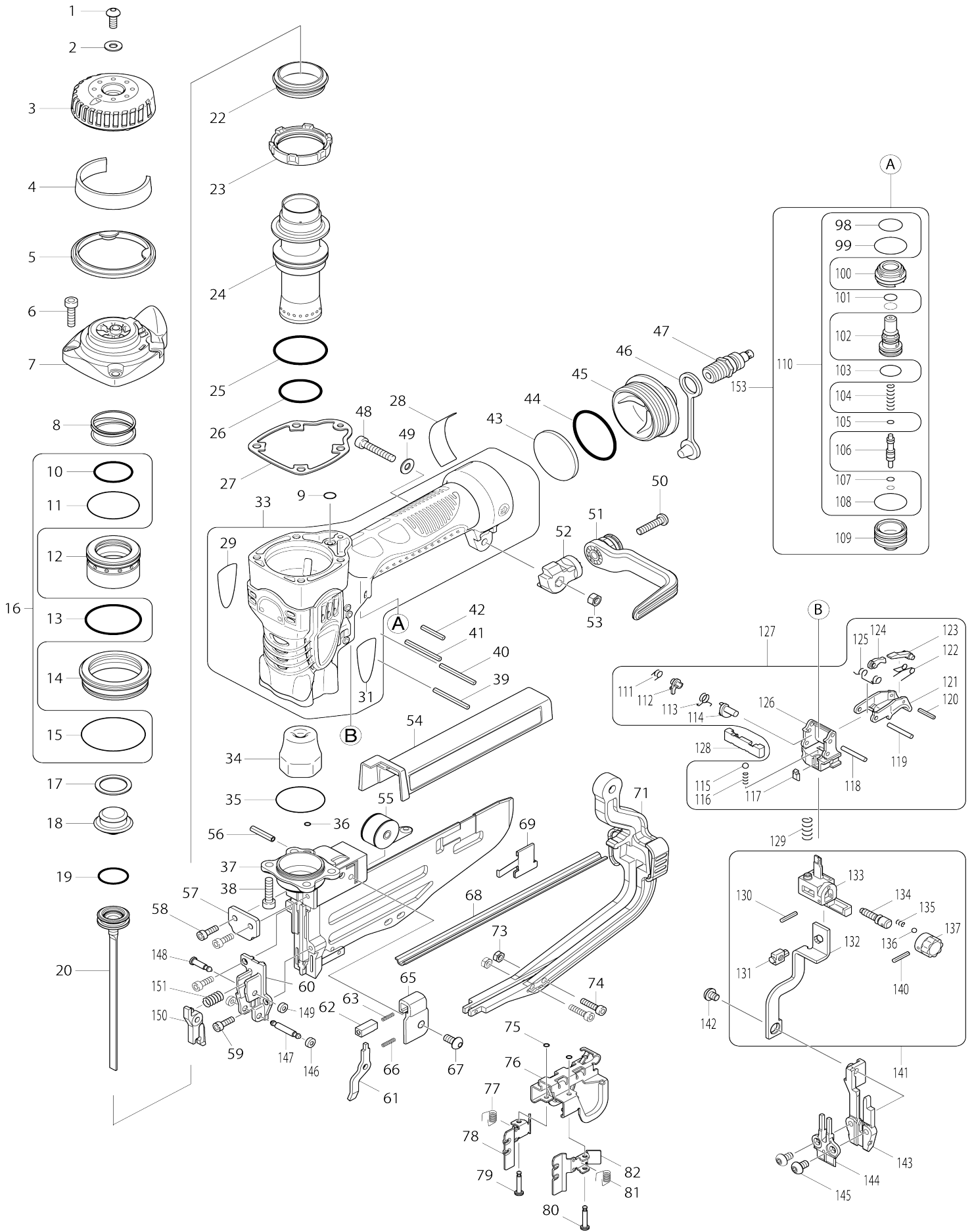


Model No.AT450H FLOOR STAPLER



Model No.AT450H FLOOR STAPLER

Item No.	Parts No.	Description	Interchangability	Q'ty	New/Old	Note1	Note2
001	266233-9	HEX. SOCKET HEAD BOLT M5X12		1	*		
001-1	265903-7	HEX. SOCKET HEAD BOLT M5X12	O	1			
002	267343-5	FLAT WASHER 5		1			
003	419764-9	EXHAUT COVER		1			
004	413106-9	FILTER		1			
005	419763-1	COVER SEAL		1			
006	266369-4	HEX SOCKET HEAD BOLT M5X20		4			
007	318252-2	TOP CAP		1			
008	234055-5	COMPRESSION SPRING 27		1			
009	213021-5	O RING 5		1			
010	213393-8	O RING 23		1			
011	213458-6	O RING 34		1			
012	419770-4	HEAD VALVE		1			
013	213510-0	O RING 36		1			
014	331744-4	HEAD VALVE GUIDE		1			
015	213561-3	O RING 42		1			
016	194736-2	AIR LEAK REPAIR SET		1			
D10		INC. 10,11,13,15,110					
017	267344-3	FLAT WASHER 18		1			
018	424146-2	REAR CUSHION		1			
019	213282-7	O-RING 17		1			
020	158772-2	Driver complete		1			
022	421994-0	VALVE SEAT		1			
023	331743-6	CYLINDER STAY		1			
024	331742-8	CYLINDER		1	*		
024-1	331946-2	Cylinder	<	1	*		
024-2	326759-4	Cylinder	<	1			
025	213462-5	O RING 33		1			
026	213405-7	O RING 26		1	*		
026-1	213643-1	O RING 26	O	1			
027	162249-1	TOP CAP GASKET		1			
028	865250-2	Name plate AT450H		1			
029	819333-0	MAKITA LOGO LABEL R		1			
031	819334-8	MAKITA LOGO LABEL L		1			
033	188650-2	HOUSING SET		1			
C10	816919-1	INDICATION LABEL		1			
D10		INC. 29,31					
034	421992-4	FRONT CUSHION		1			
035	213491-8	O RING 31		1	*		
035-1	213990-0	O-RING 31.5	O	1			
036	213034-6	O RING 3		1			
037	165512-1	DRIVER GUIDE COMPLETE		1			
038	266369-4	HEX SOCKET HEAD BOLT M5X20		4			
039	951078-5	SPRING PIN 3-32		1			
040	951078-5	SPRING PIN 3-32		1			
041	951078-5	SPRING PIN 3-32		1			
042	951069-6	SPRING PIN 3-20		1	*		

042-1	258033-1	SPRING PIN 3-22	O	1		
043	413105-1	INLET FILTER		1		
044	213521-5	O RING 36		1	*	
044-1	213506-1	O RING 36	O	1		
045	318108-9	INLET CAP		1		
046	286280-4	CAP 9		1		
047	243105-5	ONE-TOUCH JOINT H22PM		1		
048	265570-8	HEX.SOCKET HEAD BOLT M5X28		1		
049	267343-5	FLAT WASHER 5		1		
050	265176-2	PAN.HD.SCREW M5X22		1		
051	419843-3	HOOK		1		
052	162255-6	HOOK BASE		1		
053	931202-6	HEX. NUT M5		1		
054	158748-9	Magazine cover complete (black)		1		
C10	807342-1	Magazine label AT450H		1		
C20	810418-5	CAUTION LABEL		1		
055	163492-5	Spiral spring		1		
056	951116-3	SPRING PIN 4-20		1		
057	345971-7	FRONT UPPER GUIDE		1		
058	922117-8	HEX. SOCKET HEAD BOLT M4X12		2		
059	922117-8	HEX. SOCKET HEAD BOLT M4X12		2		
060	310287-9	FRONT GUIDE		1		
061	345968-6	Stop lever		1		
062	310278-0	Stopper pin		1		
063	234076-7	Compression spring 2		1	*	
063-1	234256-5	Compression spring 2	<	1		
065	310272-2	STOPPER HOLDER		1		
066	234075-9	Compression spring 2		1		
067	266076-9	HEX. SOCKET HEAD BOLT M5X10		1		
068	345969-4	Pusher guide plate		1		
069	345967-8	Magazine stopper		1		
071	168523-5	MAGAZINE STAY COMPLETE		1	*	
071-1	168743-1	MAGAZINE STAY COMPLETE	S	1		
073	931102-0	HEX. NUT M4		2		
074	265490-6	HEX. SOCKET HEAD BOLT M4X16		2	*	
074-1	266761-4	Hex socket head bolt M4X18	S	2		
075	213999-2	O-RING 2		2		
076	345970-9	Pusher base		1		
077	233529-3	Torsion spring 4		1		
078	345980-6	Pusher R		1		
079	324928-1	Headed shoulder pin 3		1		
080	324928-1	Headed shoulder pin 3		1		
081	233529-3	Torsion spring 4		1		
082	345979-1	Pusher L		1		
098	213233-0	O-RING 15		1		
099	213275-4	O RING 18		1		
100	419732-2	TRIGGER VALVE GUIDE		1		
101	213968-3	O-RING 7		2		
102	419733-0	PILOT VALVE		1	*	
102-1	456262-2	PILOT VALVE	<	1		
103	213185-5	O-RING 12.5		1		
104	233485-7	COMPRESSION SPRING 4		1		

105	213034-6	O RING 3		1	*		
105-1	213044-3	O RING 3	S	1			
106	324743-3	TRIGGER VALVE STEM		1	*		
106-1	326189-9	TRIGGER VALVE STEM	S	1			
107	213979-8	O-RING 3		2	*		
107-1	213640-7	O-RING 3	S	2			
108	213275-4	O RING 18		1			
109	331741-0	TRIGGER VALVE CASE		1			
110	194736-2	AIR LEAK REPAIR SET		1			
D10		INC. 16,98,99,101,103,105,107					
D20		INC. 108					
111	233501-5	TORSION SPRING 5		1			
112	310199-6	STOPPER PLATE		1			
113	233502-3	TORSION SPRING 6		1	*		
113-1	233576-4	TORSION SPRING 6	<	1			
114	310310-0	LEVER		1			
115	216024-8	STEEL BALL 4		1	*		
115-1	326144-1	LOCK PIN	<	1			
116	233490-4	COMPRESSION SPRING 2		1			
117	419743-7	SPRING COVER		1			
118	268168-0	PIN 3		1			
119	268168-0	PIN 3		1			
120	951007-8	SPRING PIN 2-12		1			
121	310294-2	TRIGGER		1			
122	231699-2	TORSION SPRING 4		1			
123	310196-2	TRIP LEVER		1			
124	310198-8	LEVER		1			
125	233503-1	TORSION SPRING 4		1			
126	419844-1	TRIGGER BASE		1			
127	135231-3	TRIGGER ASS'Y		1	*		
D10		INC. 111-126					
127-1	135494-1	TRIGGER ASS'Y	O	1			
D10		INC. 111-126					
128	310293-4	CHANGE ROD		1			
129	233489-9	COMPRESSION SPRING 6		1			
130	951010-9	SPRING PIN 2-14		1			
131	310201-5	ADJUSTER PIECE		1			
132	345972-5	Contact arm		1			
133	310277-2	Upper yoke		1			
134	324745-9	ADJUSTER SHAFT		1			
135	233491-2	COMPRESSION SPRING 2		1			
136	216031-1	STEEL BALL 2.3		1			
137	158747-1	ADJUSTER COMPLETE		1			
140	951010-9	SPRING PIN 2-14		1			
141	135210-1	Adjuster assembly		1			
D10		INC. 130-137,140					
142	266075-1	HEX. SOCKET HEAD BOLT M5X6		1			
143	310273-0	Contact plate		1			
144	310274-8	Contact top		1	*		
144-1	310360-5	Contact top	S	1			
145	266461-6	H.S.BUTTON HEAD SCREW M5X8		2			

146	262120-0	URETHANE RING 3		2		
147	324981-7	Pin 4		1		
148	324963-9	Headed shoulder pin 4		1		
149	262120-0	URETHANE RING 3		1		
150	310290-0	Guide plate		1	*	
150-1	310359-0	Guide plate	S	1		
151	234087-2	Compression spring 5		1		
152	941051-3	FLAT WASHER 4	S	2		
153	135598-9	TRIGGER VALVE ASS'Y		1	*	
D10		INC. 98-109				
153-1	135681-2	TRIGGER VALVE ASS'Y	<	1		
D10		INC. 98-109				
A01	192517-8	SAFETY GOGGLE		1	*	
A01-1	195246-2	SAFETY GOGGLE	<	1	*	
A02	194381-3	OIL SUPPLY SET		1		
A03	424126-8	Nose adapter		1		
A04	783201-2	HEX. WRENCH 3		1		
A05	158812-6	Plastic case complete (black)		1		
C10	163455-1	LATCH		2		

Please state Parts No. when your order.

Print Date 10/11/2023