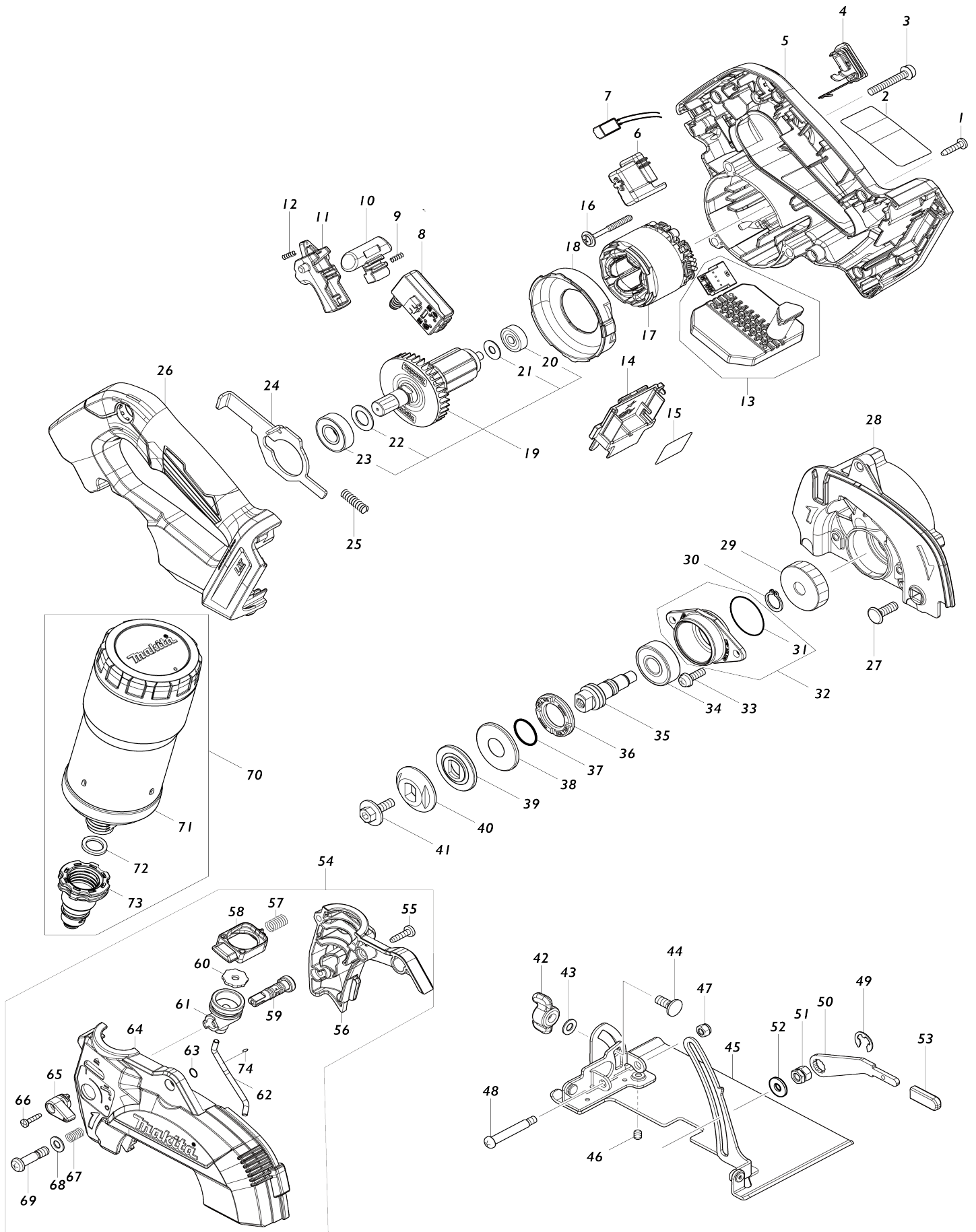


Model No.DCC501 125MM CORDLESS CUTTER



Model No.DCC501 125MM CORDLESS CUTTER

Item No.	Parts No.	Description	Interchangeability	Q'ty	New/Old	Note1	Note2
001	266326-2	TAPPING SCREW 4X18		6			
002	811A32-6	DCC501 NAME PLATE		1			
003	911258-5	PAN HEAD SCREW M5X35		3			
004	140F99-0	CAP COMPLETE		1			
C10	213218-6	O RING 16		1	*		
C11	213A05-9	O-RING16	O	1			
C20	818H07-8	CAP LABEL		1			
005	140Y20-3	MOTOR HOUSING COMPLETE		1	*		
C10	263005-3	RUBBER PIN 6		3	*		
005-1	136652-2	MOTOR HOUSING ASSEMBLY	O	1			
C10	263005-3	RUBBER PIN 6		3			
006	459256-6	HOLDER		1			
007	620936-3	LED CIRCUIT		1			
008	651083-9	SWITCH C3XA-1PSPM		1			
009	231433-0	COMPRESSION SPRING 4		1			
010	459264-7	LOCK OFF BUTTON		1			
011	458594-3	SWITCH LEVER		1			
012	231433-0	COMPRESSION SPRING 4		1			
013	620E44-0	CONTROLLER		1	*		
013-1	620L79-3	CONTROLLER	S	1			
014	643874-2	TERMINAL		1			
015	811A34-2	DCC501 SERIAL NO. LABEL		1			
016	265679-6	TAPPING SCREW 4X40		2			
017	629A39-6	STATOR		1	*		
017-1	629B61-9	STATOR	S	1			
018	413291-8	BAFFLE PLATE		1			
019	519665-2	ROTOR ASS'Y		1			
D10		INC. 20-23					
020	210022-4	BALL BEARING 626DDW		1			
021	253332-6	THIN WASHER 6		1			
022	253744-3	FLAT WASHER 12		1			
023	211131-2	BALL BEARING 6001DDW		1			
024	347785-0	SHAFT LOCK		1			
025	232667-8	COMPRESSION SPRING 6		1			
026	140Y24-5	HANDLE COVER COMPLETE		1	*		
C10	263005-3	RUBBER PIN 6		2	*		
026-1	136660-3	HANDLE COVER ASSEMBLY	O	1			
C10	263005-3	RUBBER PIN 6		2			
027	251586-9	FLAT HEAD SQUARE NECK BOLT M6X		1			
028	140Y21-1	GEAR HOUSING COMPLETE		1			
C10	213430-8	O RING 28		1			
029	227855-0	HELICAL GEAR 45		1			
030	961052-5	RETAINING RING (EXT) S-12		1			
031	213444-7	O RING 30		1			
032	135948-8	BEARING BOX ASSEMBLY		1			
D10		INC. 31					
033	911223-4	PAN HEAD SCREW M5X16		2			

034	211129-9	BALL BEARING 6201DDW		1		
035	325603-2	SPINDLE		1		
036	285858-0	BEARING RETAINER 19-33		1		
037	213279-6	O RING 18		1		
038	253397-8	CUP WASHER 15		1		
039	224423-0	INNER FLANGE 36		1		
040	224424-8	OUTER FLANGE 36		1		
041	266510-9	HEX. SOCKET HEX. BOLT M6X18		1		
042	252649-4	THUMB NUT M6		1		
043	941151-9	FLAT WASHER 6		1		
044	265939-6	FLAT HEAD SQ. NECK BOLT M6X14		1		
045	162951-6	BASE		1		
046	266264-8	H.S.SET SCREW(FLAT POINT)M5X6		1		
047	252103-8	HEX. LOCK NUT M5-8		1		
048	266515-9	+ PAN HEAD SCREW M5		1		
049	257982-9	BOW STOP RING E-8		1		
050	347399-5	LEVER PLATE		1		
051	264103-6	HEX. NUT M6		1		
052	253111-2	FLAT WASHER 6		1		
053	286036-5	CAP		1		
054	127748-0	WATER SUPPLY COVER ASSEMBLY A		1		
D10		INC. 55-69,74				
055	266034-5	TAPPING SCREW CT 4X16		3		
056	413293-4	WATER SUPPLY COVER R		1		
057	232669-4	COMPRESSION SPRING 7		1		
058	413299-2	BUTTON		1		
059	413297-6	COCK		1		
060	261166-3	RUBBER WASHER 5		1		
061	413298-4	COCK BASE		1		
062	327746-6	NOZZLE		1		
063	213005-3	O RING 5		1		
064	312A80-3	WATER SUPPLY COVER L		1		
065	413300-3	LEVER 16		1		
066	266404-8	TAPPING SCREW BIND 3X14		1		
067	233267-7	COMPRESSION SPRING 7		1		
068	941151-9	FLAT WASHER 6		1		
069	265658-4	PAN HEAD SCREW M6X26		1		
070	127800-4	WATER SUPPLY TANK ASSEMBLY		1	*	
D10		INC. 71-73				
070-1	122B73-6	WATER SUPPLY TANK ASSEMBLY	O	1		
D10		INC. 71-73				
071	140Y25-3	WATER SUPPLY TANK COMPLETE		1		
C10	213605-9	O RING 50		1		
C20	453557-4	CAP B		1		
072	261056-0	RUBBER WASHER 12		1	*	
072-1	261173-6	RUBBER WASHER 12	O	1		
073	140Y22-9	CAP COMPLETE		1		
C10	213011-8	O RING 7		1		
C20	213017-6	O RING 6		1		

C30	232668-6	COMPRESSION SPRING 8		1		
C40	413296-8	PIN 8		1		
074	213022-3	O RING 3		1		
075	620K37-3	CONTROLLER B	S	1		
076	652119-7	PAN HEAD SCREW M2X6	S	6		
A01	783217-7	HEX. WRENCH 5		1		
A02	126738-0	DUST BAG ASSEMBLY		1		
C10	410602-8	FASTENER		1		
A03	127750-3	DUST COVER ASSEMBLY A		1		
A04	140Y23-7	WATER SUPPLY HOSE COMPLETE A		1		
A12	B-16748	DIAMOND WHEEL 125MMX20M M		1		
B01	191X01-4	WATER SUPPLY COVER SET A		1		
D10		INC. 54,70,A04				
F01	199140-0	GUIDE RAIL 1000 SET		1		
F02	191N83-6	DUST COVER SET		1		
F03	196943-3	BASE COVER SET		1		
F04	198673-2	GUIDE RAIL ADAPTER SET		1		

Please state Parts No. when your order.

Print Date 10/24/2023