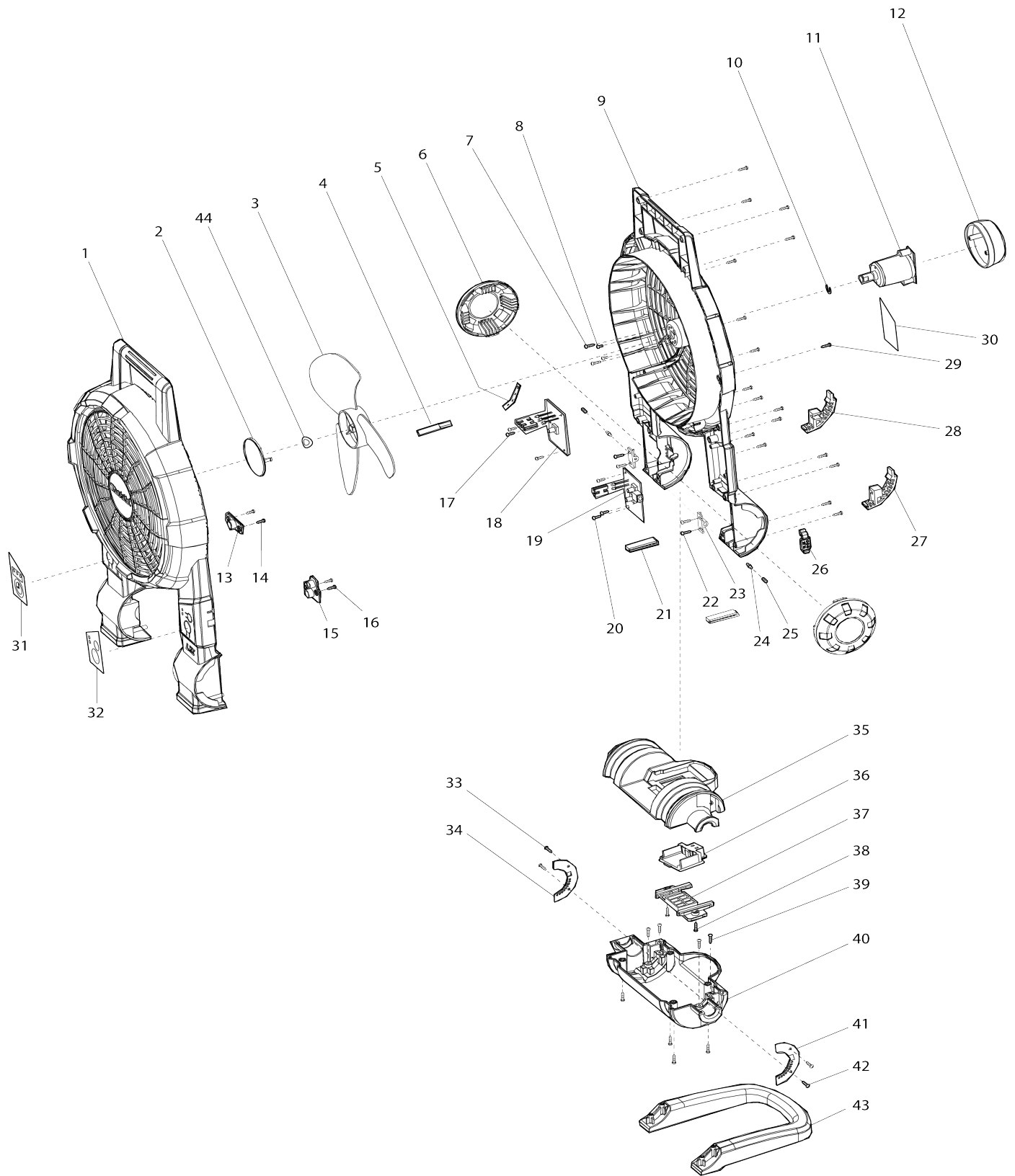


# Model No.DCF201 CORDLESS FAN



Model No.DCF201 CORDLESS FAN

Item No.	Parts No.	Description	Interchangability	Q'ty	New/Old	Note1	Note2
001	TE00000002	HOUSING SET (BLUE)		1	*		
D10		INC. 9					
001-1	TE00000166	HOUSING SET (BLUE)	<	1			
D10		INC. 9					
002	TE00000003	FAN BLADE COVER		1			
003	TE00000004	FAN BLADE		1	*		
003-1	TE00000699	FAN BLADE	O	1			
004	TE00000005	WIRE COVER A		1			
005	TE00000006	WIRE COVER B		1			
006	TE00000007	SIDE COVER		2			
007	TE00000028	TAPPING SCREW 3X14		2			
008	TE00000030	P.H.SCREW M3X5		2			
009	TE00000002	HOUSING SET (BLUE)		1	*		
D10		INC. 1					
009-1	TE00000166	HOUSING SET (BLUE)	<	1			
D10		INC. 1					
010	TE00000009	STOP RING		1			
011	TE00000041	MOTER ASSEMBLY		1			
012	TE00000011	MOTOR COVER		1			
013	TE00000012	BUTTON PROTECTER R		1	*		
013-1	TE00000013	BUTTON PROTECTER L	O	1			
014	TE00000029	TAPPING SCREW 3X10		2			
015	TE00000013	BUTTON PROTECTER L		1	*		
015-1	TE00000012	BUTTON PROTECTER R	O	1			
016	TE00000029	TAPPING SCREW 3X10		2			
017	TE00000029	TAPPING SCREW 3X10		3			
018	TE00000042	TIME PCB BOARD		1			
019	TE00000043	SWITCH PCB BOARD		1			
020	TE00000029	TAPPING SCREW 3X10		3			
021	TE00000016	FRONT FOOT		2			
022	TE00000028	TAPPING SCREW 3X14		4			
023	TE00000017	SPRING HOLDER		2			
024	TE00000008	PIN		2			
025	TE00000027	SPRING		2			
026	TE00000018	ADAPTER SOCKET CAP		1			
027	TE00000019	REAR FOOT L		1			
028	TE00000020	REAR FOOT R		1			
029	TE00000028	TAPPING SCREW 3X14		1			
031	TE00000032	SWITCH LABEL L		1			
032	TE00000033	SWITCH LABEL R		1			
033	TE00000029	TAPPING SCREW 3X10		2			
034	TE00000025	CLUTCH PLATE R		1			
035	TE00000021	BASE SET		1			
D10		INC. 40					
036	TE00000022	TERMINAL		1	*		
036-1	TE00000247	TERMINAL	O	1			
037	TE00000023	TERMINAL HOLDER		1			

038	TE00000028	TAPPING SCREW 3X14		2		
039	TE00000028	TAPPING SCREW 3X14		8		
040	TE00000021	BASE SET		1		
D10		INC. 35				
041	TE00000024	CLUTCH PLATE L		1		
042	TE00000029	TAPPING SCREW 3X10		2		
043	TE00000026	STAND		1		
044	TE00000040	WAVE WASHER		1		
A01	TEB0000006	AC ADAPTER		1	*	
A01-1	TE00000173	AC ADAPTOR	O	1	*	
A01-2	TE00000440	AC ADAPTER	O	1		

Please state Parts No. when your order.

Print Date 10/19/2023