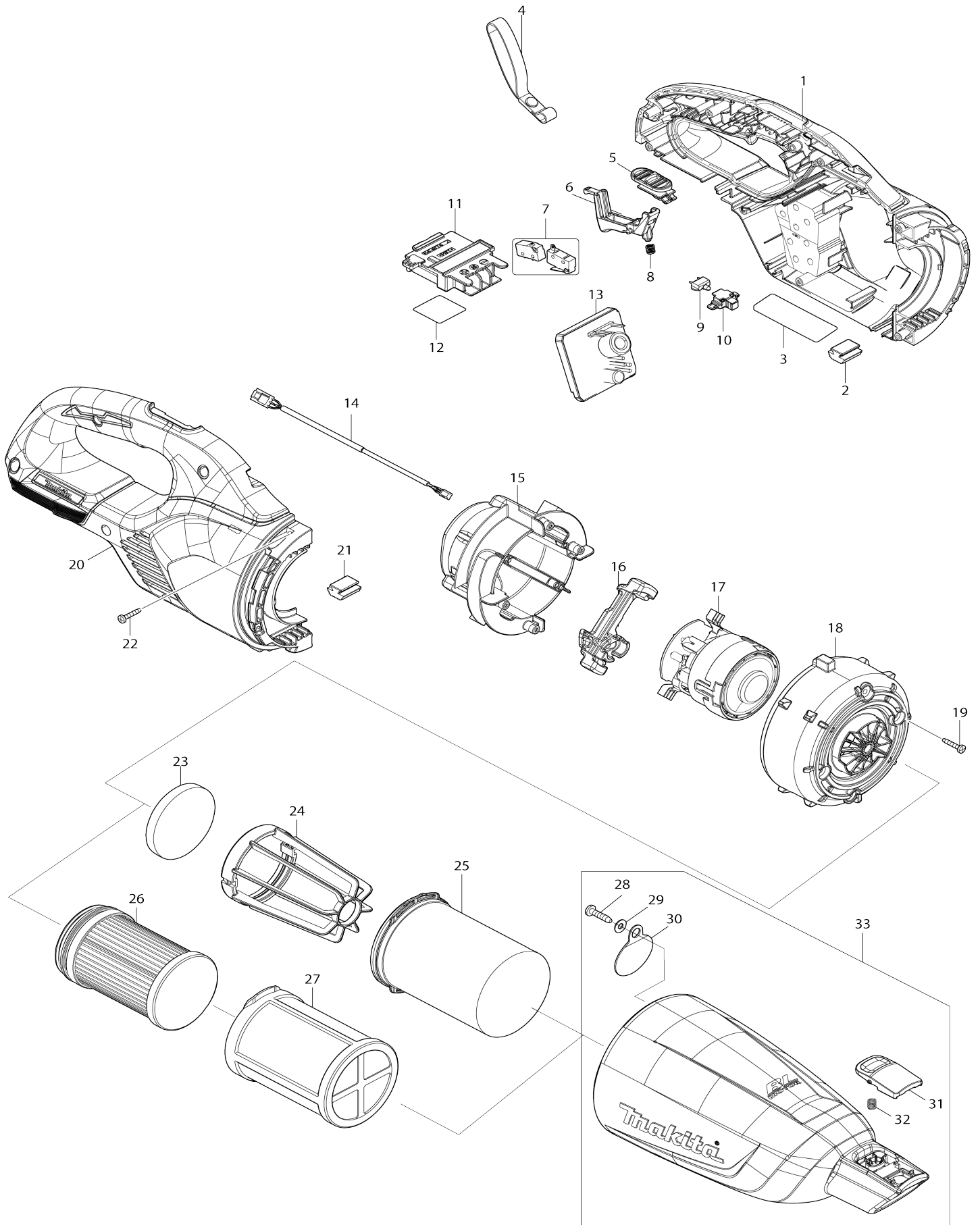


Model No.DCL283F CORDLESS CLEANER



Model No.DCL283F CORDLESS CLEANER

Item No.	Parts No.	Description	Interchangability	Q'ty	New/Old	Note1	Note2
001	183Y61-6	HOUSING SET		1			
C10	263005-3	RUBBER PIN 6		2			
C20	422974-9	SPONGE SHEET		2			
D10		INC. 2,20,21					
002	422460-0	RUBBER PLATE		1			
003	8588D6-6	DCL283F NAME PLATE		1			
004	163400-6	HANDSTRAP		1			
005	413M39-6	SLIDE SWITCH		1			
006	459324-5	SWITCH LEVER		1			
007	632N57-3	SWITCH UNIT		1			
008	232485-4	COMPRESSION SPRING 5		1			
009	620E82-2	LED CIRCUIT		1			
010	141H09-2	LED CASE COMPLETE		1			
011	643874-2	TERMINAL		1			
012	8588E4-7	DCL283F SERIAL NO. LABEL		1			
013	620L21-4	CONTROLLER		1			
C10	688163-8	LINE FILTER		1			
014	632S32-9	LEAD UNIT		1			
015	141E55-7	MOTOR COVER R COMPLETE		1			
C10	263002-9	RUBBER PIN 4		4			
016	422723-4	MOTOR COVER SEAL		1			
017	629B87-1	MOTOR ASSEMBLY		1			
018	413645-9	MOTOR COVER F		1			
019	266429-2	TAPPING SCREW 3X16		4			
020	183Y61-6	HOUSING SET		1			
C10	263005-3	RUBBER PIN 6		2			
C20	422974-9	SPONGE SHEET		2			
D10		INC. 1,2,21					
021	422460-0	RUBBER PLATE		1			
022	266429-2	TAPPING SCREW 3X16		7			
026	459358-8	FILTER H		1			
027	451208-3	PRE-FILTER		1			
028	266326-2	TAPPING SCREW 4X18		1	*		
028-1	251530-6	TAPPING SCREW 4X18	S	1			
029	941051-3	FLAT WASHER 4		1	*		
030	424208-6	VALVE		1			
031	413F33-6	BUTTON C		1			
032	232485-4	COMPRESSION SPRING 5		1			
033	136964-3	CAPSULE ASSEMBLY		1			
D10		INC. 28-32					
D11		INC. 28,30-32					
A01	127827-4	NOZZLE ASSEMBLY		1			
C10	268208-4	PIN 3		4			
C20	451410-8	ROLLER		4			
C30	422963-4	WIPER		1			
A02	413859-0	SASH NOZZLE		1			
A03	459355-4	NOZZLE HOLDER		1			

A04	459356-2	PIPE		1		
F22	1911L1-0	CLEANER STAND SET		1		
001	183Y60-8	HOUSING SET		1		
020	183Y60-8	HOUSING SET		1		
033	136963-5	CAPSULE ASSEMBLY		1		
A01	127825-8	NOZZLE ASSEMBLY		1		
A02	413770-6	SASH NOZZLE		1		
A03	459354-6	NOZZLE HOLDER		1		
A04	459353-8	PIPE		1		

Please state Parts No. when your order.

Print Date 10/24/2023