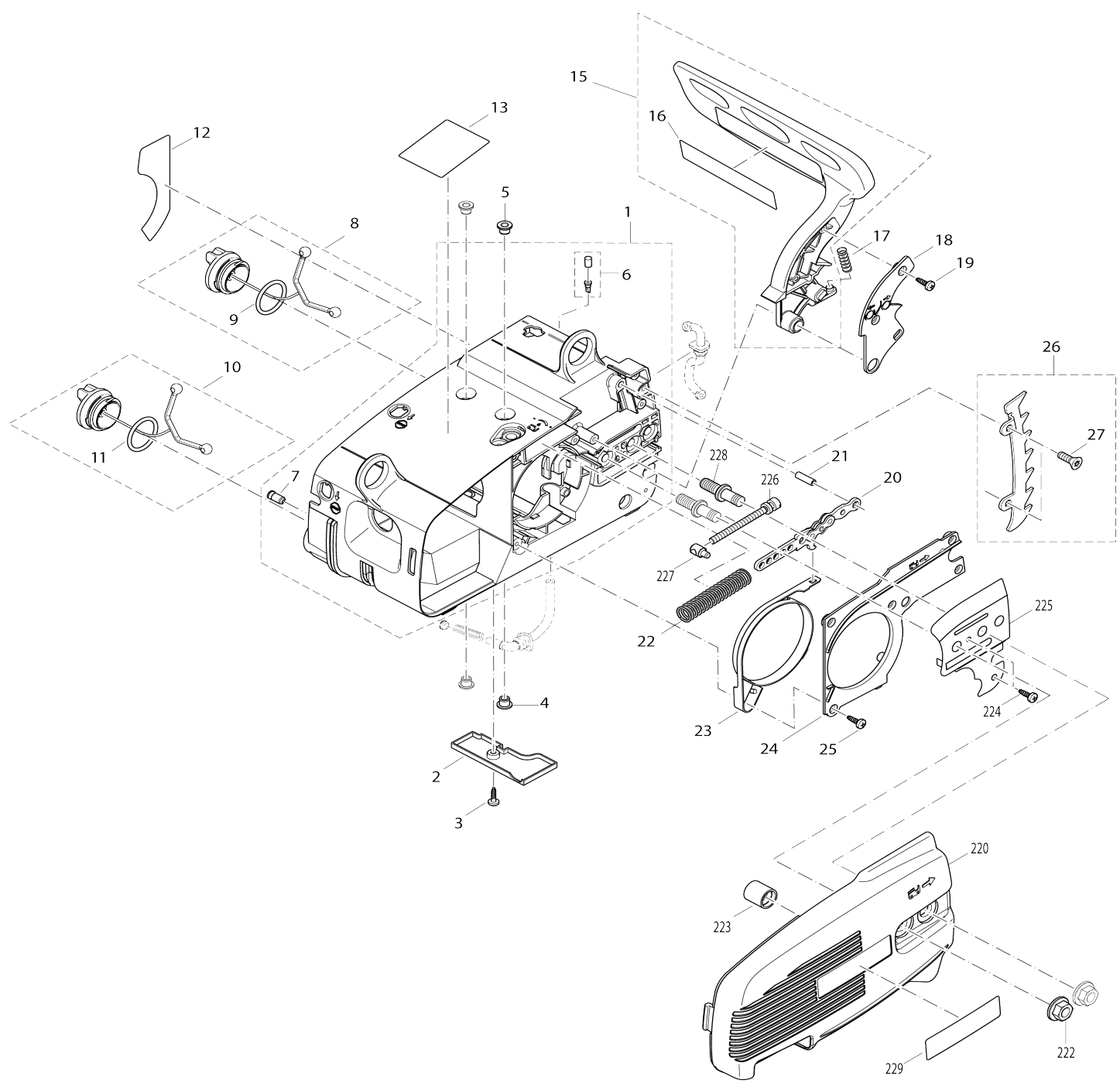
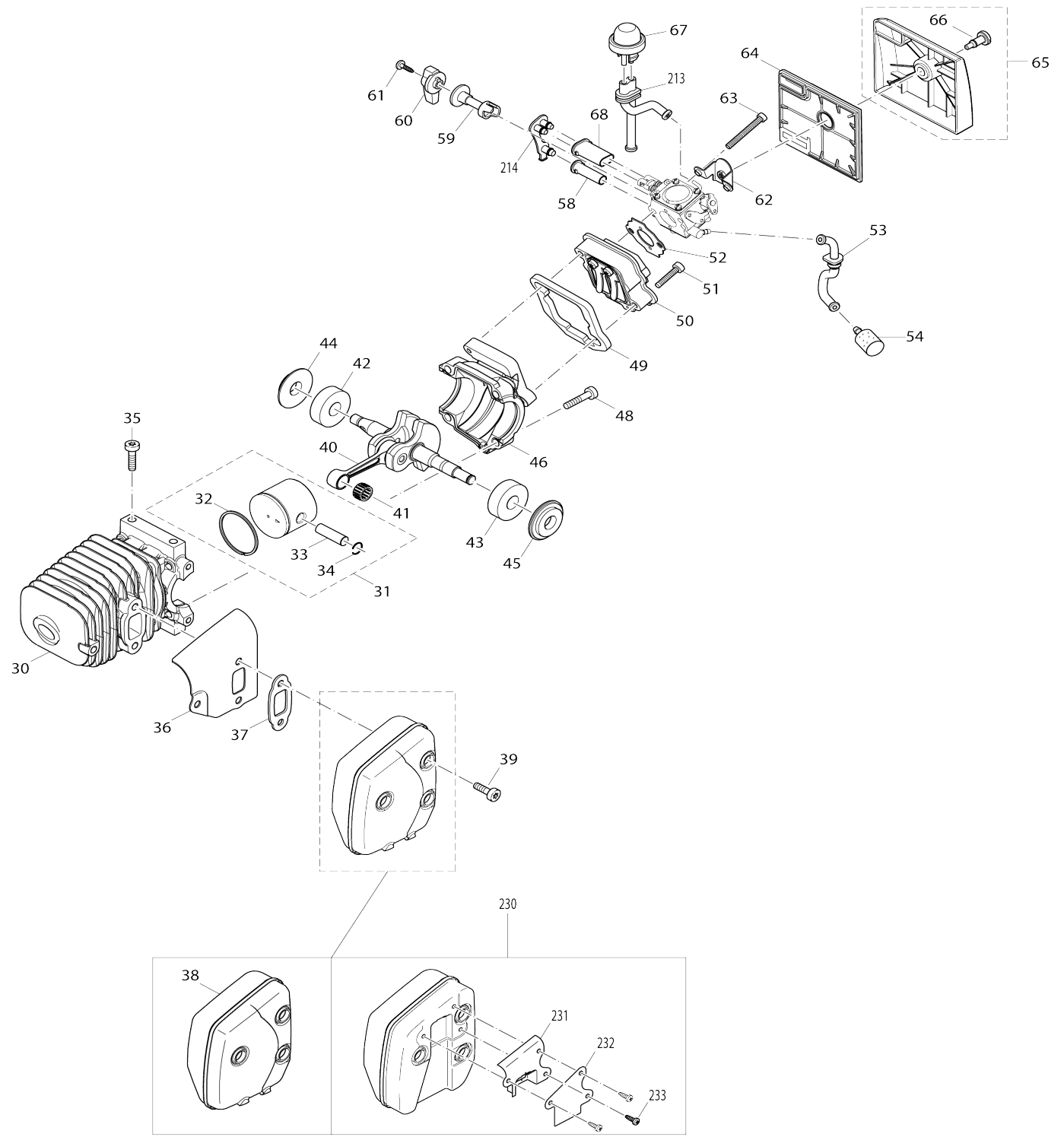


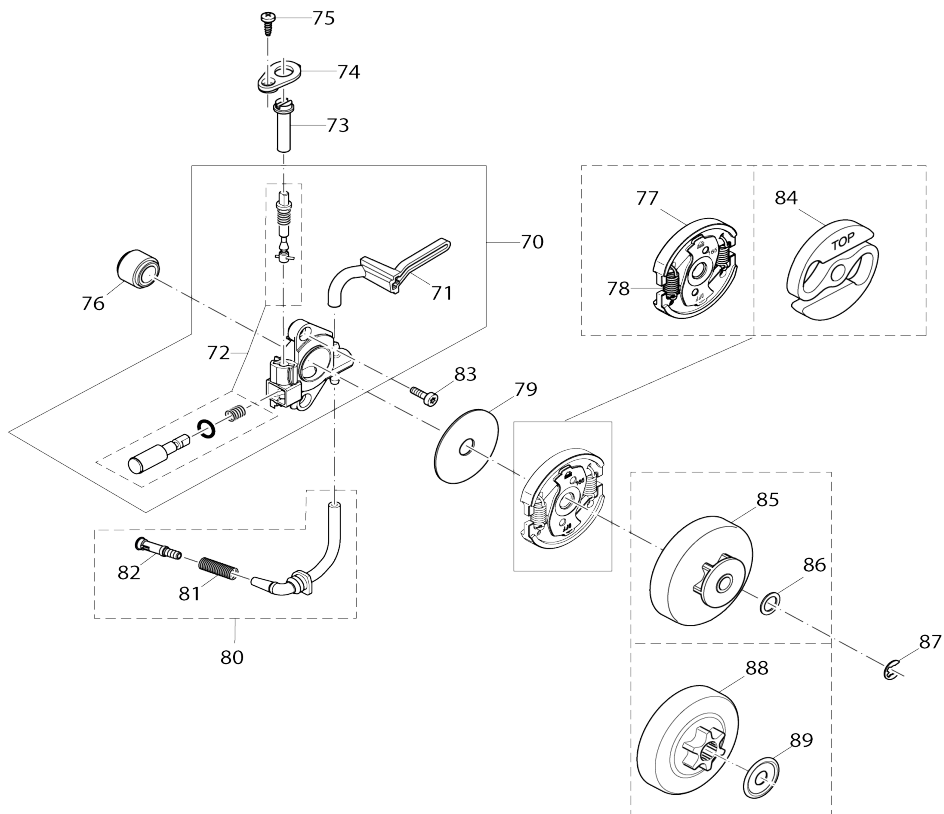
Model No.DCS3410TH ENGINE CHAIN SAW



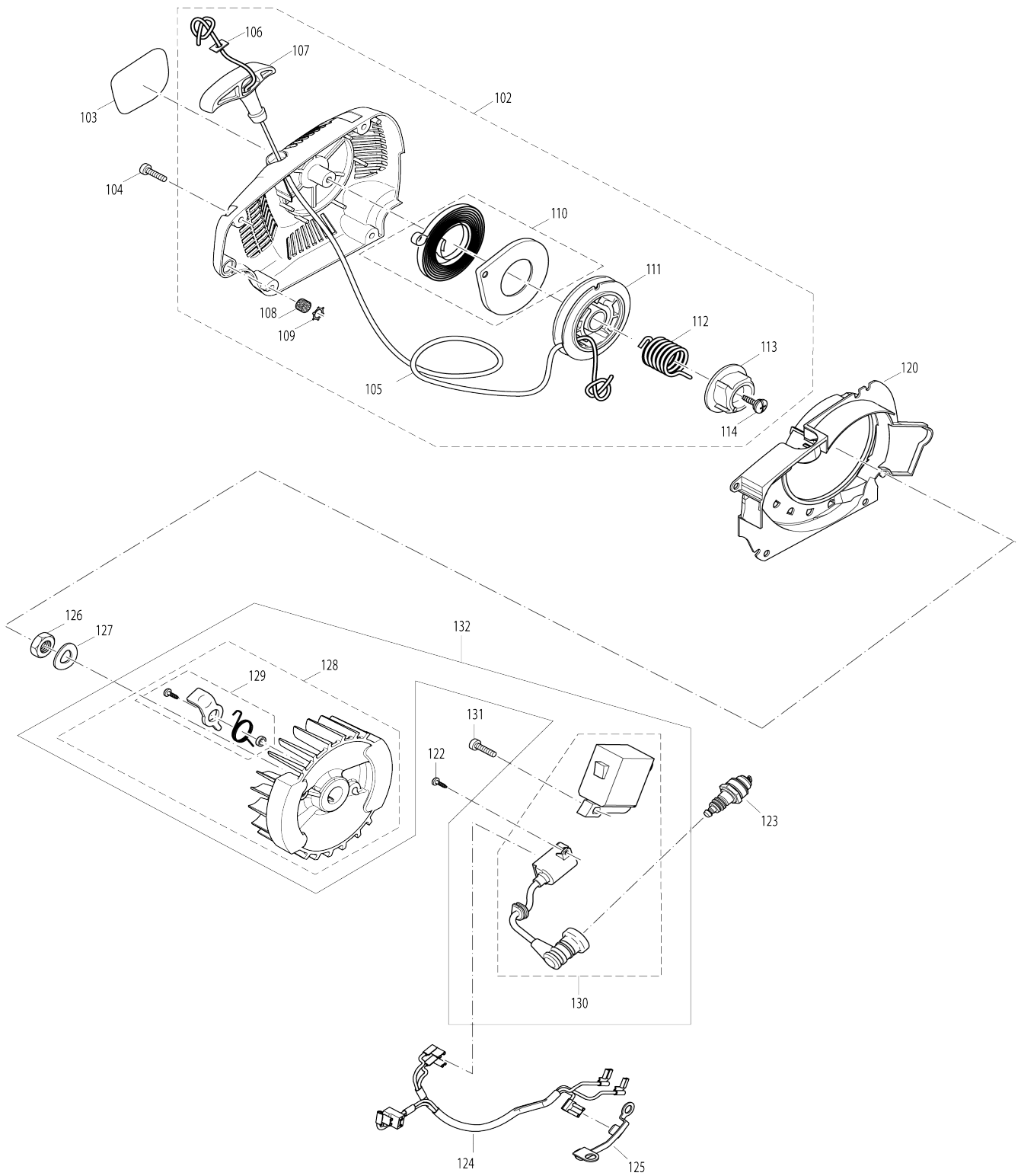
Model No.DCS3410TH ENGINE CHAIN SAW



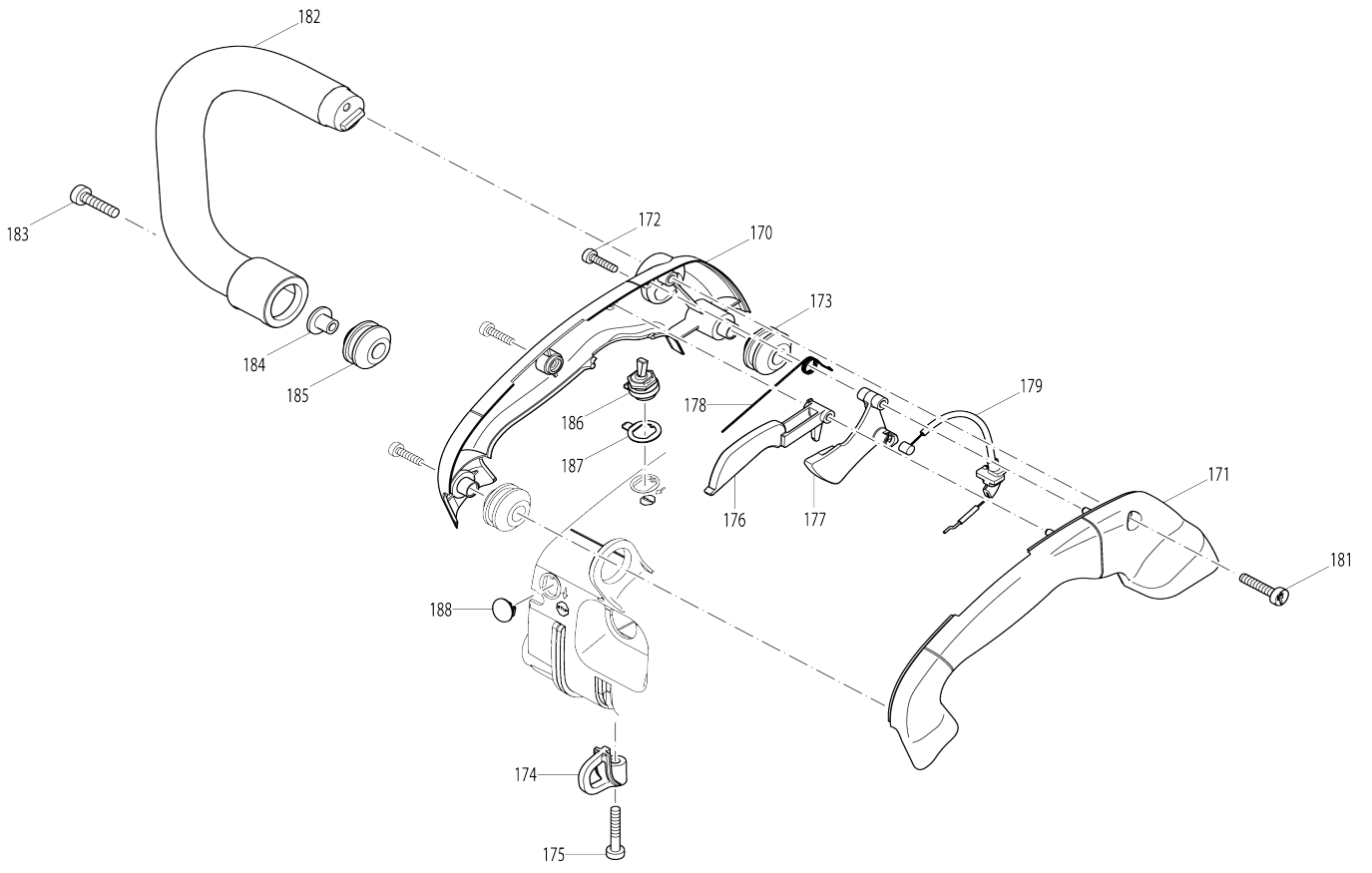
Model No.DCS3410TH ENGINE CHAIN SAW



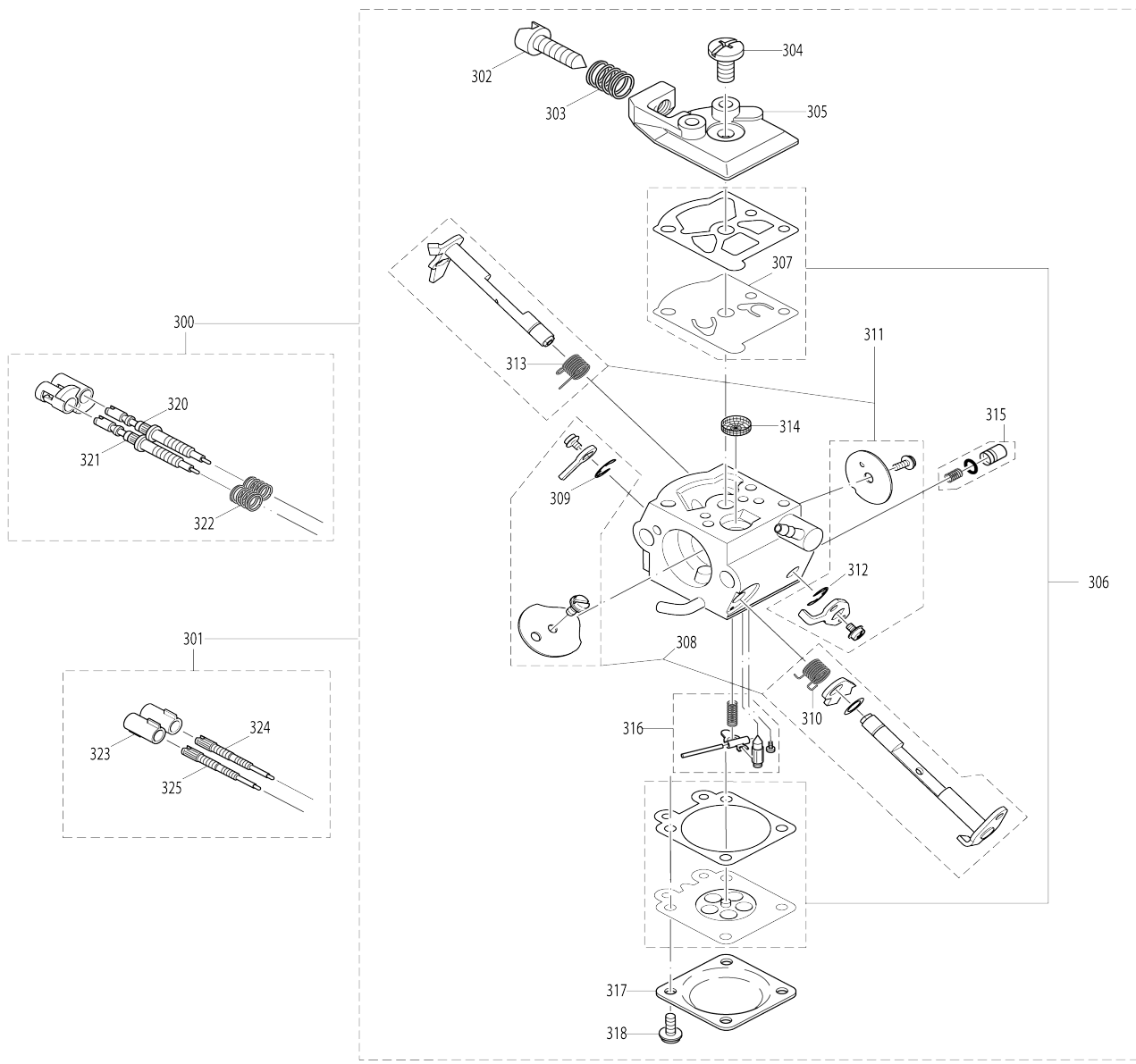
Model No.DCS3410TH ENGINE CHAIN SAW



Model No.DCS3410TH ENGINE CHAIN SAW



Model No.DCS3410TH ENGINE CHAIN SAW



Model No.DCS3410TH ENGINE CHAIN SAW

Item No.	Parts No.	Description	Interchangability	Q'ty	New/Old	Note1	Note2
001	170111604	HOUSING COMPLETE GREY		1			
D10		INC. 6,7					
002	170111680	COVER, BLUE		1			
003	915735100	PZ2 TAPPING SCREW 3.5X9.5		1	*		
003-1	251533-0	TAPPING SCREW 3.5X10	O	1			
004	170111050	BUSHING		2			
005	170111050	BUSHING		2			
006	170175010	AIR VALVE COMPLETE		1	*		
006-1	195762-4	AIR VALVE SET	O	1			
007	010245030	VENT VALVE		1	*		
007-1	168504-9	VENT VALVE	O	1			
008	170114100	TANK CAP COMPLETE		1	*		
D10		INC. 9					
008-1	168508-1	TANK CAP COMPLETE	O	1			
D10		INC. 9					
009	963225030	O RING		1	*		
009-1	213355-6	O-RING 25	O	1			
010	170114100	TANK CAP COMPLETE		1	*		
D10		INC. 11					
010-1	168508-1	TANK CAP COMPLETE	O	1			
D10		INC. 11					
011	963225030	O RING		1	*		
011-1	213355-6	O-RING 25	O	1			
012	980114904	LABEL (CHOKE)		1			
013	980114919	CAUTION LABEL		1			
015	170213020	HAND GUARD COMPLETE		1			
D10		INC. 16					
016	810449-4	CAUTION LABEL		1			
017	225213060	SPRING FOR HAND GUARD		1	*		
017-1	233174-4	COMPRESSION SPRING 6	O	1			
018	170213040	HAND GUARD COVER		1			
019	915735100	PZ2 TAPPING SCREW 3.5X9.5		2	*		
019-1	251533-0	TAPPING SCREW 3.5X10	O	2			
020	028213532	BRAKE LINK PLATE COMPLETE		1	*		
020-1	158044-5	LINK PLATE COMPLETE	O	1			
021	962650200	PIN 5X20		1			
022	028213521	SPRING		1	*		
022-1	233175-2	COMPRESSION SPRING 9	O	1			
023	170213080	BRAKE BAND		1			
024	170213050	BRAKE BAND COVER		1			
025	915735100	PZ2 TAPPING SCREW 3.5X9.5		5	*		
025-1	251533-0	TAPPING SCREW 3.5X10	O	5			
026	170250200	SPIKE BAR SET		1			
D10		INC. 27					
027	913850155	H.L.S. TAPPING SCREW 5X15		2	*		
027-1	266991-7	H.L.TAPPING SCREW 5X15	O	2			
030	170131010	CYLINDER		1			

031	170132100	PISTON, PISTON RING & PIN SET		1		
D10		INC. 32-34				
032	170132030	PISTON RING		1		
033	170132020	PISTON PIN		1		
034	170132040	CIRCLIP		2		
035	266605-8	H.L. SOCKET HEAD BOLT M5X16		4		
036	170174081	HEAT INSULATION PLATE		1		
037	170174050	MUFFLER GASKET		1		
038	170174100	MUFFLER		1		
039	908405145	H.L. SOCKET HEAD BOLT M5X14		3	*	
039-1	266986-0	H.L. SOCKET HEAD BOLT M5X14	O	3		
040	170120101	CRANKSHAFT COMPLETE		1		
041	962211006	NEEDLE CAGE		1		
042	960102131	BALL BEARING 6201		1		
043	960102131	BALL BEARING 6201		1		
044	962900060	OIL SEAL		1		
045	962900060	OIL SEAL		1		
046	170111201	CRANKCASE COMPLETE		1		
048	908005205	H.L. SOCKET HEAD BOLT M5X20		4	*	
048-1	266476-3	H.L. SOCKET HEAD BOLT M5X20	O	4		
049	170131040	REED VALVE GASKET		1		
050	170131100	REED VALVE COMPLETE		1		
051	913340204	H.L. SOCKET HEAD BOLT M4X20		2		
052	965524023	CARBURETOR GASKET		1		
053	170114070	FUEL LINE WITH GROMMET		1		
054	163447-0	FUEL FILTER		1		
058	170118041	CARBURETOR ADJUSTING GUIDE S		1		
059	170155050	CHOKE LEVER EXTENSION		1		
060	170155040	CHOKE LEVER		1		
061	915735100	PZ2 TAPPING SCREW 3.5X9.5		1	*	
061-1	251533-0	TAPPING SCREW 3.5X10	O	1		
062	170151051	AIR FILTER COVER MOUNT		1		
063	908004406	H.L. SOCKET HEAD BOLT M4X40		2		
064	170173021	AIR FILTER ELEMENT FLEECE		1		
065	170118100	AIR FILTER ELEMENT COVER		1		
D10		INC. 66				
066	170118020	SCREW FOR AIR FILTER		1		
067	168398-2	PRIMER PUMP		1		
068	170118031	CARBURETOR ADJUSTING GUIDE H/L		1	*	
068-1	424709-4	ADJUST GUIDE	O	1		
070	170245101	CHAIN OIL PUMP ASSY		1		
D10		INC. 71,72				
071	170245110	CHAIN OIL OUTLET TUBE		1		
072	170245300	CHAIN OIL PUMP REPAIR KIT		1		
073	170245030	CHAIN OIL ADJUSTER EXTENSIO N		1		
074	170245090	CHAIN OIL ADJUSTER RETAINER		1		
075	915735100	PZ2 TAPPING SCREW 3.5X9.5		1	*	
075-1	251533-0	TAPPING SCREW 3.5X10	O	1		
076	170245130	PUMP DRIVE		1		

077	165180200	CLUTCH ASSY		1	*		
D10		INC. 78					
077-1	168607-9	CLUTCH COMPLETE	O	1			
D10		INC. 78					
078	165184020	TENSION SPRING 5		2	*		
078-1	231873-2	TENSION SPRING 5	O	2			
079	165182060	FLAT WASHER 10		1	*		
079-1	267431-8	FLAT WASHER 10	O	1			
080	170245200	SUCTION LINE OIL COMPLETE		1	*		
D10		INC. 81,82					
080-1	170245200	SUCTION LINE OIL COMPLETE	O	1			
D10		INC. 81,82					
081	231975-4	SPRING		1			
082	416274-7	CAP		1	*		
082-1	452666-6	NIPPLE		1	*		
082-2	452666-6	NIPPLE	O	1			
083	908004125	H.L. SOCKET HEAD BOLT M4X12		2			
085	170223111	CLUTCH DRUM CPL. 3/8", Z=6		1	*		
086	900006064	SHIM RING 8X14X0.5		1	*		
087	927306000	STOP RING E-6		1	*		
087-1	259033-4	RETAINING RING E TYPE 6	O	1			
088	140484-1	CLUTCH DRUM ASSEMBLY		1			
089	267833-8	CUP WASHER 8		1			
102	170160650	STARTER ASSY BLUE		1			
D10		INC. 105-114					
103	980115959	MAKITA LOGO		1			
104	913340204	H.L.SOCKET HEAD BOLT M4X20		4			
105	021164010	STARTER ROPE 3.0MM L=0.9M		1			
106	195160080	WASHER		1	*		
106-1	267847-7	SQUARE WASHER 4	O	1			
107	170160760	STARTER GRIP		1			
108	965404840	GASKET		1			
109	930216030	TOOTHED WASHER		1			
110	170160730	REWIND SPRING		1			
111	170160740	CABLE DRUM		1			
112	170160770	SPRING		1			
113	170160780	STARTER RATCHET WHEEL		1	*		
113-1	453786-9	CAM PLATE	O	1			
114	170160790	TAPPING SCREW		1			
120	170160621	BUFFLE PLATE BLUE		1			
122	915735100	PZ2 TAPPING SCREW 3.5X9.5		2	*		
122-1	251533-0	TAPPING SCREW 3.5X10	O	2			
123	168648-5	SPARK PLUG (BPMR7A)		1			
124	170147010	WIRE HARNESS		1			
125	170143031	GROUND CONNECTOR		1			
126	920308024	HEX. NUT M8X1 (FINE THREAD)		1	*		
126-1	264022-6	HEX. NUT M8X1	O	1			
127	926208001	SPRING WASHER 8		1	*		
127-1	267822-3	SPRING WASHER 8	O	1			
128	170141101	FLYWHEEL ASSEMBLY		1			
D10		INC. 129					
129	957166100	STARTER RATCHET CP(2PCS EAC		1			

		H)				
130	170143110	IGNITION COIL COMPLETE		1		
131	908004165	H.L. SOCKET HEAD BOLT M4X16		2		
132	170140100	FLYWHEEL & IGNITION COIL SET		1		
D10		INC. 128,130				
170	170311010	TOP HANDLE LEFT		1		
171	170313010	TOP HANDLE RIGHT		1		
172	913340204	H.L.SOCKET HEAD BOLT M4X20		3		
173	965403491	RUBBER BUFFER		2		
174	170313080	HOOK		1		
175	913650304	H.L. TAPPING SCREW 5X30		1		
176	170117040	CATCH LEVER		1		
177	170117030	THROTTLE LEVER		1		
178	170117050	SPRING		1		
179	170312011	THROTTLE CONTROL CABLE		1		
181	913650304	H.L. TAPPING SCREW 5X30		1		
182	170310010	FRONT HANDLE		1		
183	913650304	H.L. TAPPING SCREW 5X30		1		
184	036114020	FIXING BUSH		1		
185	965403491	RUBBER BUFFER		1		
186	170146050	TOGGLE SWITCH		1		
187	170146010	LOCKING RING FOR TOGGLE SWITCH		1		
188	170111060	BLIND PLUG		1		
213	170118070	FUEL LINE FOR PRIMER PUMP		1		
214	170118050	CARBURETOR ADJUSTING GUIDE		1		
220	170213602	SPROCKET GUARD BLUE		1		
222	923208004	HEX. FLANGE NUT M8(BAR NUT)		2	*	
222-1	252145-2	COLLARED HEX NUT M8	O	2		
223	170213100	CHAIN CATCH		1		
224	915735100	PZ2 TAPPING SCREW 3.5X9.5		2	*	
224-1	251533-0	TAPPING SCREW 3.5X10	O	2		
225	170111070	GUIDE PLATE		1		
226	036213090	TESIONING SCREW		1		
227	001213042	TENSION SLIDE		1		
228	036110021	GUIDE BAR BOLT M8		2		
229	980114912	MAKITA LOGO LABEL		1		
300	170151100	CARBURETOR		1		
D10		INC. 302-306,308,311,314-318,				
D20		320-322				
302	378151210	IDLE STOP SCREW		1		
303	170151260	SPRING		1		
304	118151190	SCREW		1		
305	021151160	PUMP COVER		1		
306	021151540	SET GASKET/DIAPHRAGM		1		
D10		INC. 307				
307	021151150	PUMP DIAPHRAGM,RUBBER		1		
308	957151040	KIT CHOKE SHAFT		1		
D10		INC. 309,310				
309	119151350	SHAFT CLIP		1		
310	170151280	SPRING		1		
311	957151060	KIT THROTTLE SHAFT		1		

D10		INC. 312,313				
312	119151350	SHAFT CLIP		1		
313	001151310	SPRING		1		
314	021151180	SCREEN		1		
315	957151070	ACCELERATOR PUMP SET		1		
316	957150040	SET OF CONTROL PARTS		1		
317	021151120	DIAPHRAGM COVER		1		
318	378151220	SCREW		4		
320	001151810	IDLE ADJUSTMENT SCREW		1		
321	001151820	MAIN ADJUSTMENT SCREW		1		
322	021151530	SPRING(H)		2		
A20	952010640	BAR COVER 14-17"35-43CM MAKI TA		1	*	
A20-1	419560-5	CHAIN PROTECTION COVER 430	O	1		
A22	941719133	UNIVERSAL WRENCH 13/19		1	*	
A22-1	782033-4	UNIVERSAL WRENCH 13/19	O	1		
A23	940827000	HEXALOBULAR ANGLED DRIVER T27		1	*	
A23-1	782025-3	HEXALOBULAR WRENCH 27	O	1		
A24	783012-5	SCREWDRIVER		1		
A25	950004002	PLASTIC BAG		1	*	
A25-1	831340-3	TOOL BAG	O	1		
F09	196205-9	SAW CHAIN SET		1	*	
F09-1	191H08-4	SAW CHAIN 10 SET	O	1		
085	170223202	CLUTCH DRUM CPL. 1/4". Z=8		1		
084	170181010	CLUTCH		1		

Please state Parts No. when your order.

Print Date 10/19/2023