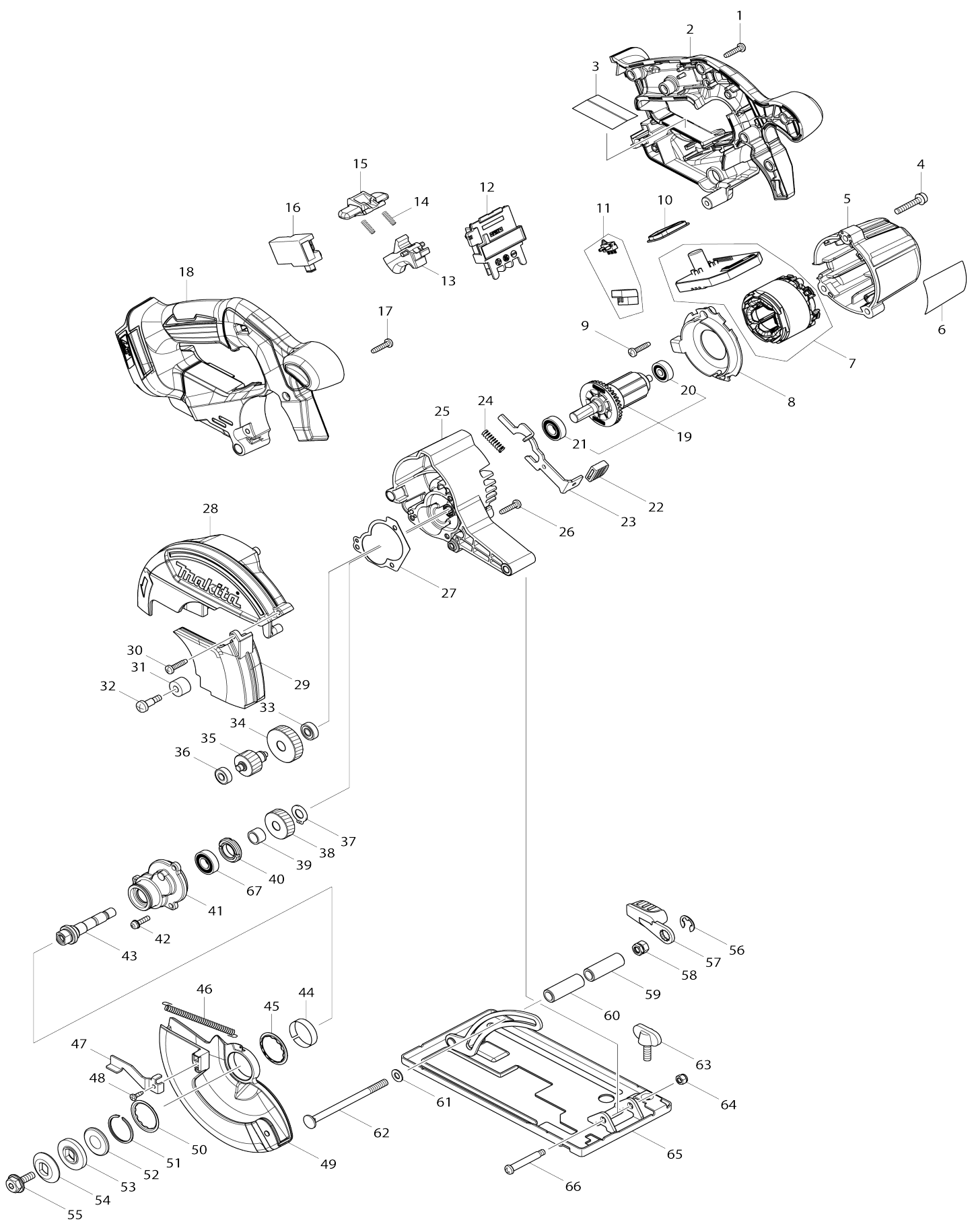


Model No.DCS551 150MM CORDLESS METAL CUTTER



Model No.DCS551 150MM CORDLESS METAL CUTTER

Item No.	Parts No.	Description	Interchangeability	Q'ty	New/Old	Note1	Note2
001	265995-6	TAPPING SCREW 4X18		8			
002	183B24-4	HANDLE SET		1			
C10	263005-3	RUBBER PIN 6		2			
D10		INC. 18					
004	911253-5	PAN HEAD SCREW M5X30		3			
005	455900-3	MOTOR HOUSING		1			
006	850X99-7	DCS551 NAME PLATE		1			
007	632E36-7	STATOR UNIT		1	*		
007-1	629C16-0	STATOR	S	1			
008	455897-6	BAFFLE PLATE		1			
009	265995-6	TAPPING SCREW 4X18		2			
010	142948-1	INDICATION PLATE COMPLETE		1			
011	632E44-8	SWITCH UNIT		1			
012	643899-6	TERMINAL		1			
013	455480-9	SWITCH LEVER		1			
014	231469-9	COMPRESSION SPRING 4		2			
015	419664-3	LOCK OFF LEVER		1			
016	650734-1	SWITCH TG73BDS-2		1			
017	265995-6	TAPPING SCREW 4X18		2			
018	183B24-4	HANDLE SET		1			
C10	263005-3	RUBBER PIN 6		2			
D10		INC. 2					
019	519365-4	ROTOR ASS'Y		1	*		
D10		INC. 20,21					
019-1	519530-5	ROTOR ASS'Y	<	1	*		
D10		INC. 20,21					
019-2	510437-8	ROTOR ASS'Y	<	1	*		
D10		INC. 20,21					
019-3	510437-8	ROTOR ASS'Y	O	1			
D10		INC. 20,21					
020	210022-4	BALL BEARING 626DDW		1			
021	210069-8	BALL BEARING 6900DDW		1	*		
021-1	210214-5	BALL BEARING 6900DDW	<	1			
022	286275-7	CAP		1			
023	346885-3	SHAFT LOCK		1			
024	233117-6	COMPRESSION SPRING 6		1			
025	143229-6	GEAR HOUSING COMPLETE		1			
C10	213961-7	O RING 22		1			
026	265995-6	TAPPING SCREW 4X18		2			
027	424715-9	GASKET		1			
028	455899-2	BLADE CASE		1			
029	455898-4	BLADE COVER		1			
030	265995-6	TAPPING SCREW 4X18		1			
031	262511-5	RUBBER SLEEVE 6		1			
032	265115-2	+ PAN HEAD SCREW M5		1			
033	210065-6	BALL BEARING 625ZZ		1			
034	227809-7	HELICAL GEAR 30		1			

035	227807-1	HELICAL GEAR 17		1		
036	210033-9	BALL BEARING 696ZZ		1		
037	961005-4	RETAINING RING S-9		1		
038	227808-9	HELICAL GEAR 24		1		
039	257728-3	SLEEVE 10		1		
040	285847-5	BEARING RETAINER 14-23		1		
041	143228-8	BEARING BOX COMPLETE		1		
C10	263002-9	RUBBER PIN 4		1		
042	911128-8	P.H.SCREW M4X16 WITH WR		3		
043	326540-3	SPINDLE		1		
044	345470-9	THICKNESS RING		1		
045	345739-1	SPACER		1		
046	231792-2	TENSION SPRING 3		1		
047	272285-0	LEVER 48		1		
048	266007-8	TAPPING SCREW BIND PT 3X10		1		
049	143155-9	SAFETY COVER COMPLETE		1		
050	345739-1	SPACER		1		
051	257938-2	RETAINING RING(EXT) WR-26		1		
052	267802-9	CUP WASHER 13		1		
053	224391-7	INNER FLANGE 30		1		
054	224404-4	OUTER FLANGE 30		1		
055	266925-0	HEX.SOCKET HEX.BOLT M6X18		1		
056	257982-9	BOW STOP RING E-8		1		
057	272272-9	LEVER 45		1		
058	264096-7	HEX. NUT M6		1		
059	331719-3	PIPE 9		1		
060	331719-3	PIPE 9		1		
061	941151-9	FLAT WASHER 6		1		
062	266195-1	CAP SQUARE BOLT M6X90		1		
063	251896-4	SCREW M5X20		1		
064	252103-8	HEX. LOCK NUT M5-8		1		
065	161326-6	BASE		1		
066	265056-2	+ PAN HEAD SCREW M5		1		
067	210069-8	BALL BEARING 6900DDW		1	*	
067-1	210214-5	BALL BEARING 6900DDW	<	1		
068	620M37-5	CONTROLLER COMPLETE	S	1		
069	652119-7	PAN HEAD SCREW M2X6	S	6		
A01	192219-6	SAFETY GOGGLE		1	*	
A02	783203-8	HEX. WRENCH 5		1		
A03	B-46296	T.C.T SAW BLADE 150X20X32T		1		
F02	196235-0	BATTERY BL1815N SET		1		
F03-2	197267-0	BATTERY BL1840B SET	O	1		
F04-2	197267-0	BATTERY BL1840B SET	O	1		
F05-2	197265-4	BATTERY BL1840B SET	O	1		
F06-2	197265-4	BATTERY BL1840B SET	O	1		
F09-2	197273-5	BATTERY BL1840B SET(2PIECES)	O	1		
F11	196449-1	BATTERY BL1815N SET		1		
F12-2	197280-8	BATTERY BL1850B SET	O	1		
F13-2	197282-4	BATTERY BL1850B SET	O	1		
F14-2	197288-2	BATTERY BL1850B SET 2PIECES	O	1		
A04	821551-8	CONNECTOR PLASTIC CASE (TYP E3)		1		

C10	453974-8	LATCH		4		
A05	838269-4	INNER TRAY		1		
A06	806R47-8	DCS551RTJ INDICATION LABEL		1		
A07	806R48-6	DCS551RTJ PLASTIC CASE LABEL		2		
A08	***DC18RC	DC18RC FAST CHARGER		1		
A09	197280-8	BATTERY BL1850B SET		2	*	
A09-1	197280-8	BATTERY BL1850B SET	O	2		
A10	450128-8	BATTERY COVER		1		

Please state Parts No. when your order.

Print Date 10/19/2023