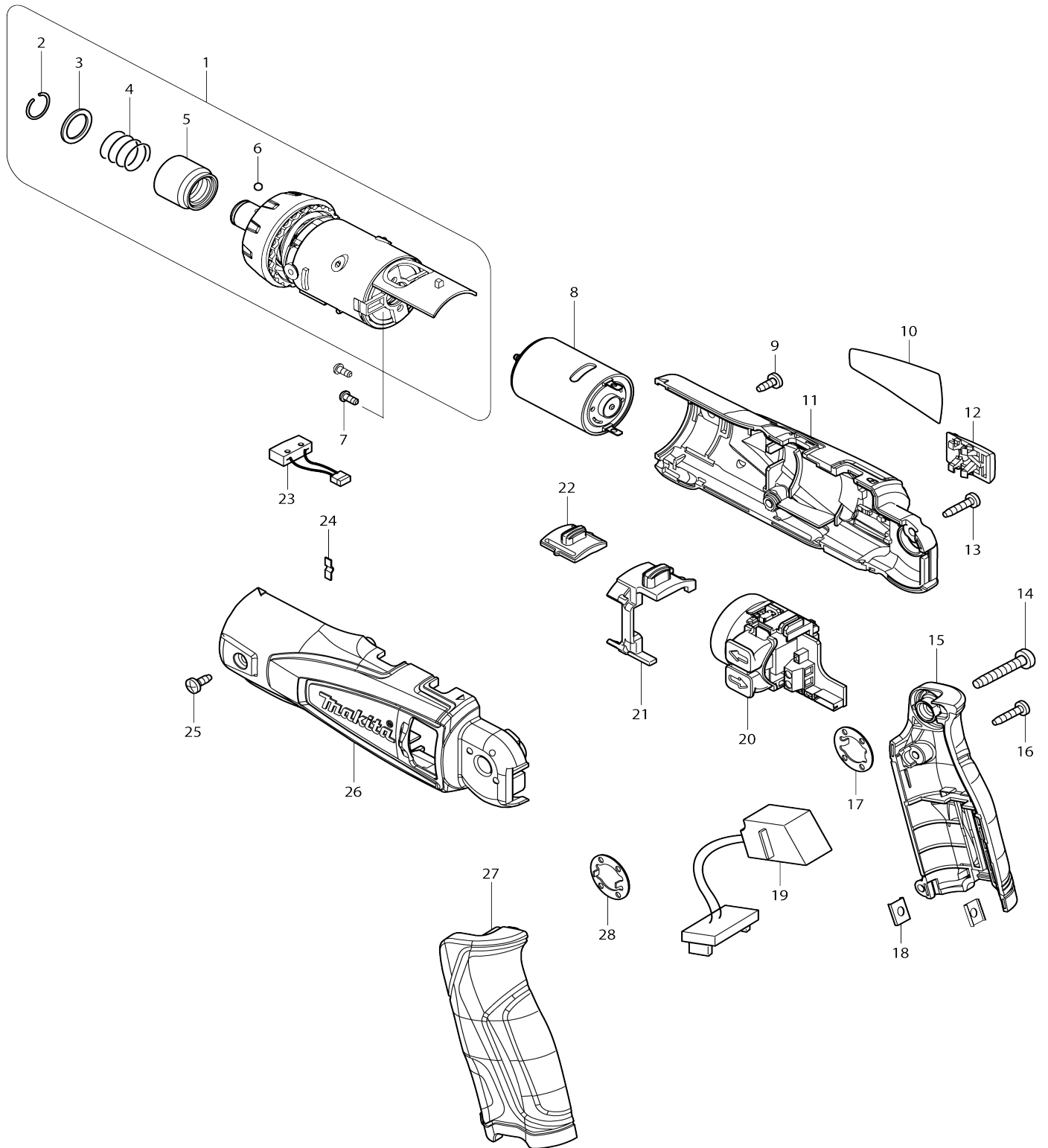


Model No.DF010D CORDLESS DRIVER DRILL



Model No.DF010D CORDLESS DRIVER DRILL

Item No.	Parts No.	Description	Interchangability	Q'ty	New/Old	Note1	Note2
001	125464-8	GEAR ASSEMBLY		1			
D10		INC. 2-6					
002	231965-7	RING SPRING 10		1			
003	267143-3	FLAT WASHER 11		1			
004	233005-7	COMPRESSION SPRING 13		1			
005	324919-2	BIT SLEEVE		1			
006	216019-1	STEEL BALL 3		2			
007	265172-0	+PAN HEAD SCREW M2.6X6		2			
008	629854-2	DC MOTOR		1			
009	265954-0	TAPPING SCREW BIND PT3X8		1			
010	865100-1	DF010D NAME PLATE		1			
011	188508-5	MOTOR HOUSING SET		1			
D10		INC. 26					
012	450590-7	SLIDE PLATE		1			
013	266404-8	TAPPING SCREW BIND 3X14		3			
014	266374-1	TAPPING SCREW 4X25		1			
015	188509-3	HANDLE SET		1			
D10		INC. 27					
016	266404-8	TAPPING SCREW BIND 3X14		2			
017	267803-7	LOCK WASHER		1			
018	345749-8	SET PLATE		2			
019	631811-8	CONTROLLER		1			
020	638605-2	SWITCH UNIT		1			
021	450553-3	CHANGE LEVER		1			
022	125465-6	SPEED CHANGE LEVER ASSEMBLY		1			
C10	233018-8	COMPRESSION SPRING 3		2			
023	638609-4	SWITCH UNIT		1			
024	232242-0	LEAF SPRING		1			
025	265954-0	TAPPING SCREW BIND PT3X8		1			
026	188508-5	MOTOR HOUSING SET		1			
D10		INC. 11					
027	188509-3	HANDLE SET		1			
D10		INC. 15					
028	267803-7	LOCK WASHER		1			
A01	***DC07SA	DC07SA BATTERY CHARGER		1	*		
A01-1	***DC10WA	DC10WA BATTERY CHARGER	<	1			
A02	194355-4	BATTERY BL7010 SET		2	*		
A02-1	194355-4	BATTERY BL7010 SET	<	2	*		
A02-2	198000-3	BATTERY BL0715 SET	<	2			
A03	784244-7	+ BIT 2-50		1			
A04	784245-5	+ BIT 1-50		1			
A05	824781-0	PLASTIC CASE		1			
A06	158775-6	PLASTIC CARRYING CASE COMPLETE		1			
C10	417724-5	LATCH		2			
A06	821549-5	CONNECTOR PLASTIC CASE (TYPE1)		1			

C10	453974-8	LATCH		4			
A07	837871-0	INNER TRAY		1			
A08	802U86-4	DF010DSJ INDICATION LABEL		1			
A09	802U87-2	DF010DSJ PLASTIC CASE LABEL		2			

Please state Parts No. when your order.

Print Date 14.11.2023