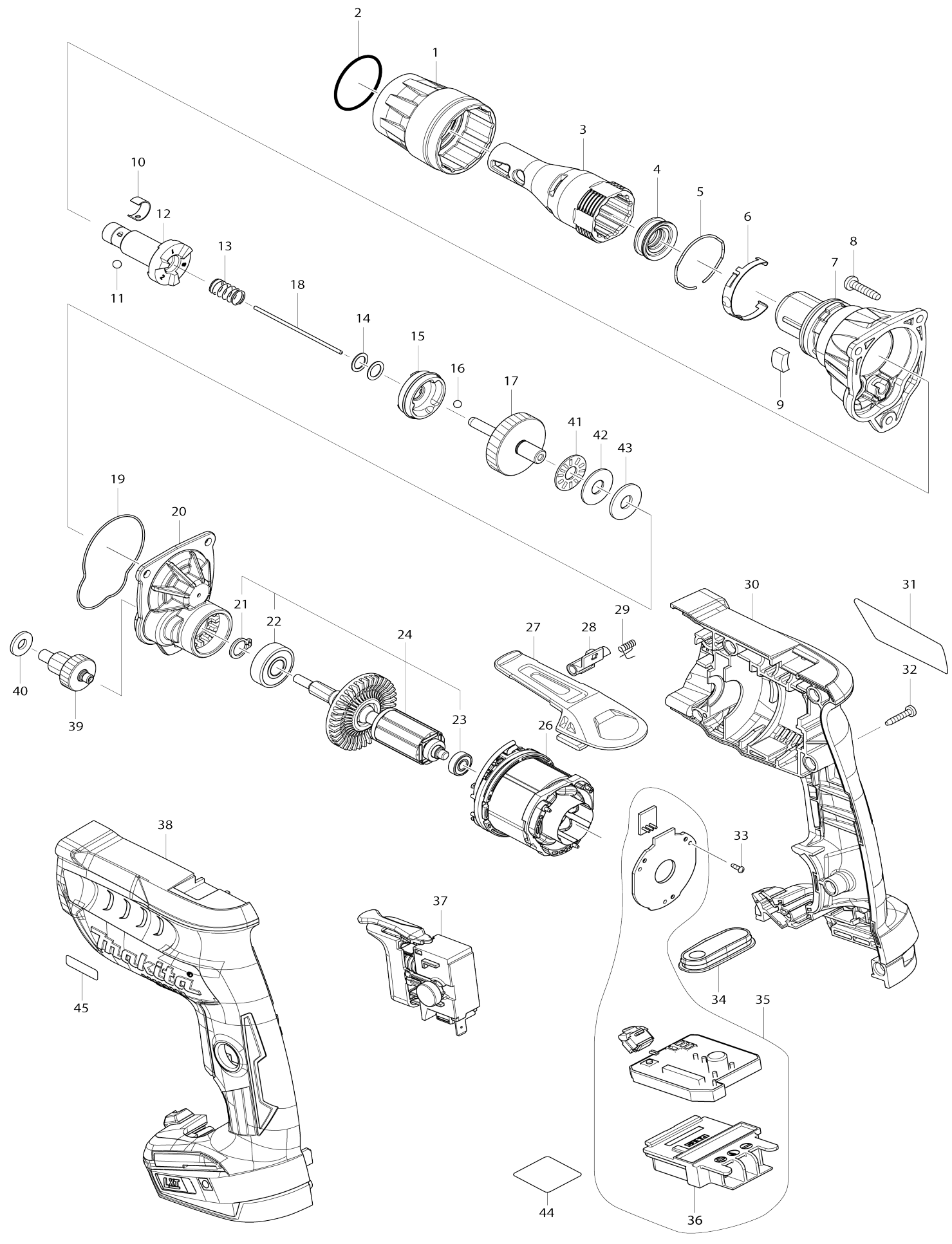


# Model No.DFS250 CORDLESS SCREWDRIVER



# Model No.DFS250 CORDLESS SCREWDRIVER

Item No.	Parts No.	Description	Interchangability	Q'ty	New/Old	Note1	Note2
001	455591-0	LOCK RING		1			
002	424235-3	SEAL RING 30		1			
003	158875-2	LOCATOR S COMPLETE		1			
004	424665-8	DUST SEAL SLEEVE		1			
005	234348-0	RING SPRING 30		1			
006	232245-4	LEAF SPRING		1			
007	144156-0	GEAR HOUSING COMPLETE		1			
C10	213796-6	OIL SEAL 11		1			
008	265995-6	TAPPING SCREW 4X18		3	*		
008-1	265A48-7	TAPPING SCREW 4X18	O	3			
009	423413-2	RUBBER PLATE		1			
010	232050-9	LEAF SPRING		1			
011	216001-0	STEEL BALL 3.5		1			
012	144159-4	SPINDLE 125S COMPLETE		1			
013	234121-8	COMPRESSION SPRING 8		1			
014	267202-3	FLAT WASHER 8		2			
015	223181-5	CLUTCH CAM 125S		1			
016	216008-6	STEEL BALL 4		3			
017	144160-9	GEAR COMPLETE		1	*		
017-1	144703-7	GEAR COMPLETE	<	1			
018	256342-2	ROD 2		1			
019	424928-2	SEAL RING		1			
020	144161-7	GEAR HOUSING COVER COMPLETE		1			
C10	210003-8	BALLBEARING 685ZZ		1			
021	961005-4	RETAINING RING S-9		1			
022	211493-8	BALL BEARING 609DDW		1			
023	210039-7	BALL BEARING 695DDW		1	*		
023-1	211157-4	BALL BEARING 695ZZ	O	1			
024	519424-4	ROTOR ASS'Y		1	*		
D10		INC. 21-23					
024-1	510471-8	ROTOR ASS'Y	O	1			
D10		INC. 21-23					
026	629135-4	STATOR		1			
027	162272-6	HOOK		1			
028	142908-3	LEVER COMPLETE		1	*		
028-1	140M84-5	LEVER COMPLETE	<	1			
029	233619-2	TORSION SPRING 3		1			
030	183F17-5	HOUSING SET		1			
C10	263005-3	RUBBER PIN 6		2			
C20	252126-6	HEX. LOCK NUT M4-7		2			
D10		INC. 38					
031	852V20-0	DFS250 NAME PLATE		1			
032	266130-9	TAPPING SCREW BIND PT 3X16		7			
033	266490-9	TAPPING SCREW PT 2X6		3			
034	144162-5	SWITCH PLATE COMPLETE		1			
035	620616-1	CONTROLLER COMPLETE		1			
D10		INC. 36					

036	643860-3	TERMINAL		1		
037	650733-3	SWITCH C3JW-4B-2L		1		
038	183F17-5	HOUSING SET		1		
C10	263005-3	RUBBER PIN 6		2		
C20	252126-6	HEX. LOCK NUT M4-7		2		
D10		INC. 30				
039	221478-6	GEAR COMPLETE 9-23		1		
040	267100-1	FLAT WASHER 6		1		
041	216415-3	THRUST NEEDLE CAGE 821		1	*	
041-1	216415-3	THRUST NEEDLE CAGE 821	O	1		
042	216212-7	WASHER 821		1		
043	261111-8	URETHANE WASHER 8		1		
044	852V21-8	DFS250 SERIAL NO. LABEL		1		
045	810W86-2	2500RPM INDICATION LABEL		1		
A01	266622-8	+ TRUSS HEAD SCREW M4X12		1		
A02	346317-0	HOOK		1		
A03	784261-7	+BIT 2-25		2		
A04	784813-4	MAGNETIC BIT HOLDER 6.35-60		1		
A05	450128-8	BATTERY COVER		1		
A06	***DC18RC	DC18RC FAST CHARGER		1		
D10		COMPO-PARTS				
A07	197600-6	BATTERY BL1830B SET		2	*	
A07-1	197600-6	BATTERY BL1830B SET	O	2		
A08	821550-0	CONNECTOR PLASTIC CASE (TYP E2)		1		
C10	453974-8	LATCH		4		
A09	837805-3	INNER TRAY		1	*	
A09-1	836101-6	INNER TRAY	<	1		
A10	810Y25-4	DFS250RFJ INDICATION LABEL		1		
A11	810Y26-2	DFS250RFJ PLASTIC CASE LABEL		2		
F11	199156-5	SQUARE BIT 2-130 SET		1		
F14-2	191L24-0	AUTOFEED ATTACHMENT SET	<	1		
F20-1	191L23-2	AUTOFEED ATTACHMENT SET	<	1		
A07	197265-4	BATTERY BL1840B SET		2	*	
A07-1	197265-4	BATTERY BL1840B SET	O	2		
A10	810Y27-0	DFS250RMJ INDICATION LABEL		1		
A11	810Y28-8	DFS250RMJ PLASTIC CASE LABEL		2		
A07	197280-8	BATTERY BL1850B SET		2	*	
A07-1	197280-8	BATTERY BL1850B SET	O	2		
A10	810Y29-6	DFS250RTJ INDICATION LABEL		1		
A11	810Y30-1	DFS250RTJ PLASTIC CASE LABEL		2		

Please state Parts No. when your order.

Print Date 25/10/2023