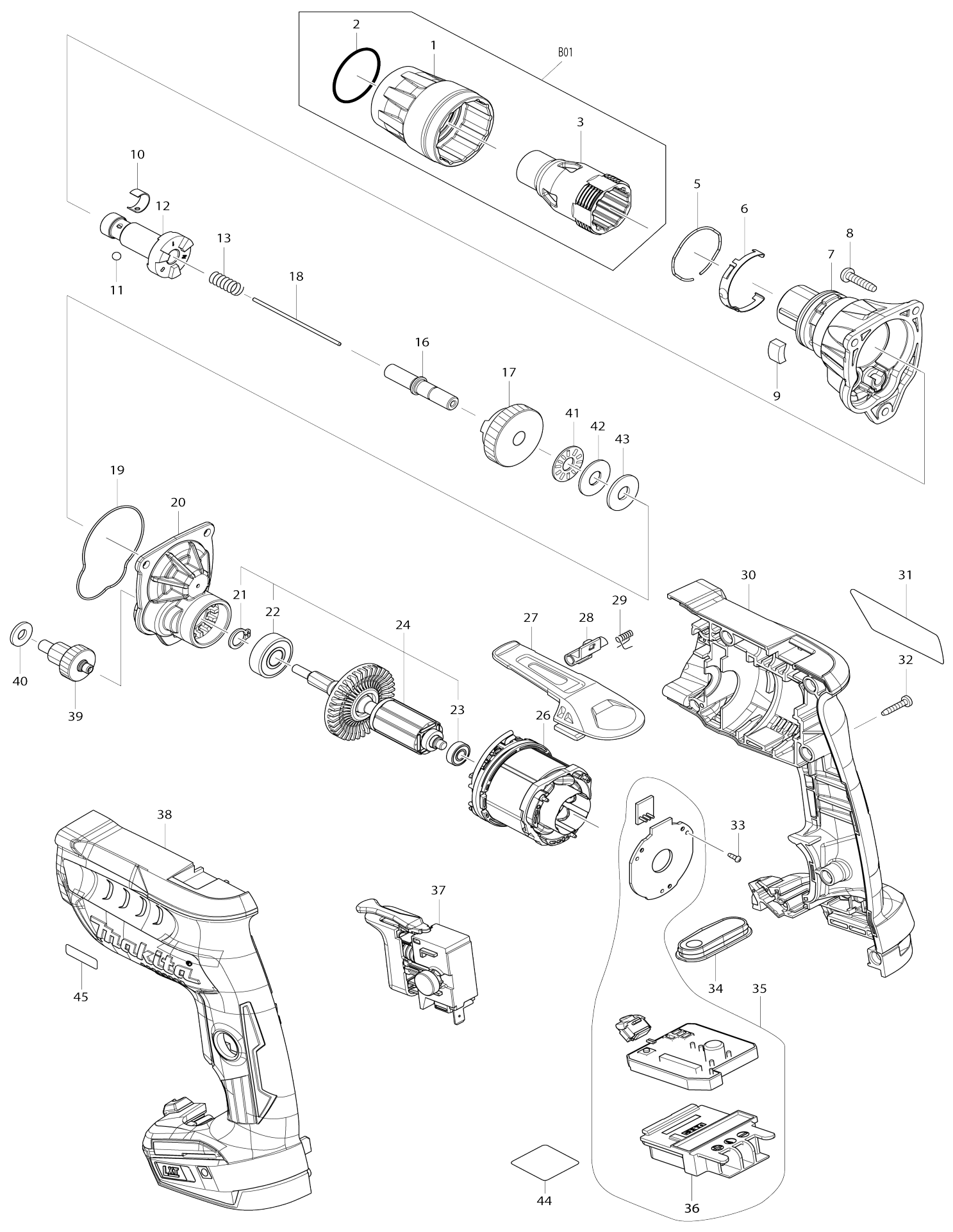


Model No.DFS251 CORDLESS SCREWDRIVER



Model No.DFS251 CORDLESS SCREWDRIVER

Item No.	Parts No.	Description	Interchangability	Q'ty	New/Old	Note1	Note2
001	455591-0	LOCK RING		1			
002	424235-3	SEAL RING 30		1			
003	450968-4	LOCATOR 3/8"		1			
005	234348-0	RING SPRING 30		1			
006	232245-4	LEAF SPRING		1			
007	144157-8	GEAR HOUSING COMPLETE		1			
C10	213139-2	DUST SEAL 13		1			
008	265995-6	TAPPING SCREW 4X18		3	*		
008-1	265A48-7	TAPPING SCREW 4X18	O	3			
009	423413-2	RUBBER PLATE		1			
010	232050-9	LEAF SPRING		1			
011	216001-0	STEEL BALL 3.5		1			
012	326839-6	SPINDLE 180N		1			
013	233126-5	COMPRESSION SPRING 6		1			
016	256343-0	COLLARED PIN 8		1			
017	221479-4	SPUR GEAR 34-180		1			
018	256342-2	ROD 2		1			
019	424928-2	SEAL RING		1			
020	144161-7	GEAR HOUSING COVER COMPLETE		1			
C10	210003-8	BALLBEARING 685ZZ		1			
021	961005-4	RETAINING RING S-9		1			
022	211493-8	BALL BEARING 609DDW		1			
023	210039-7	BALL BEARING 695DDW		1	*		
023-1	211157-4	BALL BEARING 695ZZ	O	1			
024	519424-4	ROTOR ASSY		1	*		
D10		INC. 21-23					
024-1	510471-8	ROTOR ASSY	O	1			
D10		INC. 21-23					
026	629135-4	STATOR		1			
027	162272-6	HOOK		1			
028	142908-3	LEVER COMPLETE		1	*		
028-1	140M84-5	LEVER COMPLETE	<	1			
029	233619-2	TORSION SPRING 3		1			
030	183F17-5	HOUSING SET		1			
C10	263005-3	RUBBER PIN 6		2			
C20	252126-6	HEX. LOCK NUT M4-7		2			
D10		INC. 38					
031	852V41-2	DFS251 NAME PLATE		1			
032	266130-9	TAPPING SCREW BIND PT 3X16		7			
033	266490-9	TAPPING SCREW PT 2X6		3			
034	144162-5	SWITCH PLATE COMPLETE		1			
035	620616-1	CONTROLLER COMPLETE		1			
D10		INC. 36					
036	643860-3	TERMINAL		1			
037	650733-3	SWITCH C3JW-4B-2L		1			
038	183F17-5	HOUSING SET		1			
C10	263005-3	RUBBER PIN 6		2			

C20	252126-6	HEX. LOCK NUT M4-7		2			
D10		INC. 30					
039	221478-6	GEAR COMPLETE 9-23		1			
040	267100-1	FLAT WASHER 6		1			
041	216415-3	THRUST NEEDLE CAGE 821		1	*		
041-1	216415-3	THRUST NEEDLE CAGE 821	O	1			
042	216212-7	WASHER 821		1			
043	261111-8	URETHANE WASHER 8		1			
044	852U75-9	DFS251 SERIAL NO. LABEL		1			
045	810W86-2	2500RPM INDICATION LABEL		1			
A01	266622-8	+ TRUSS HEAD SCREW M4X12		1			
A02	346317-0	HOOK		1			
A03	784806-1	MAGNETIC SOCKET BIT 10-65		1			
A04	450128-8	BATTERY COVER		1			
A05	***DC18RC	DC18RC FAST CHARGER		1			
D10		COMPO-PARTS					
A06	197600-6	BATTERY BL1830B SET		2	*		
A06-1	197600-6	BATTERY BL1830B SET	O	2			
A07	821550-0	CONNECTOR PLASTIC CASE (TYP E2)		1			
C10	453974-8	LATCH		4			
A08	837805-3	INNER TRAY		1	*		
A08-1	836101-6	INNER TRAY	<	1			
A09	810Y35-1	DFS251RFJ INDICATION LABEL		1			
A10	810Y36-9	DFS251RFJ PLASTIC CASE LABEL		2			
B01	197027-0	LOCATOR 3/8" SET		1			
D10		INC. 1-3					
A06	197265-4	BATTERY BL1840B SET		2	*		
A06-1	197265-4	BATTERY BL1840B SET	O	2			
A09	810Y37-7	DFS251RMJ INDICATION LABEL		1			
A10	810Y38-5	DFS251RMJ PLASTIC CASE LABEL		2			
A06	197280-8	BATTERY BL1850B SET		2	*		
A06-1	197280-8	BATTERY BL1850B SET	O	2			
A09	810Y39-3	DFS251RTJ INDICATION LABEL		1			
A10	810Y40-8	DFS251RTJ PLASTIC CASE LABEL		2			

Please state Parts No. when your order.

Print Date 25/10/2023