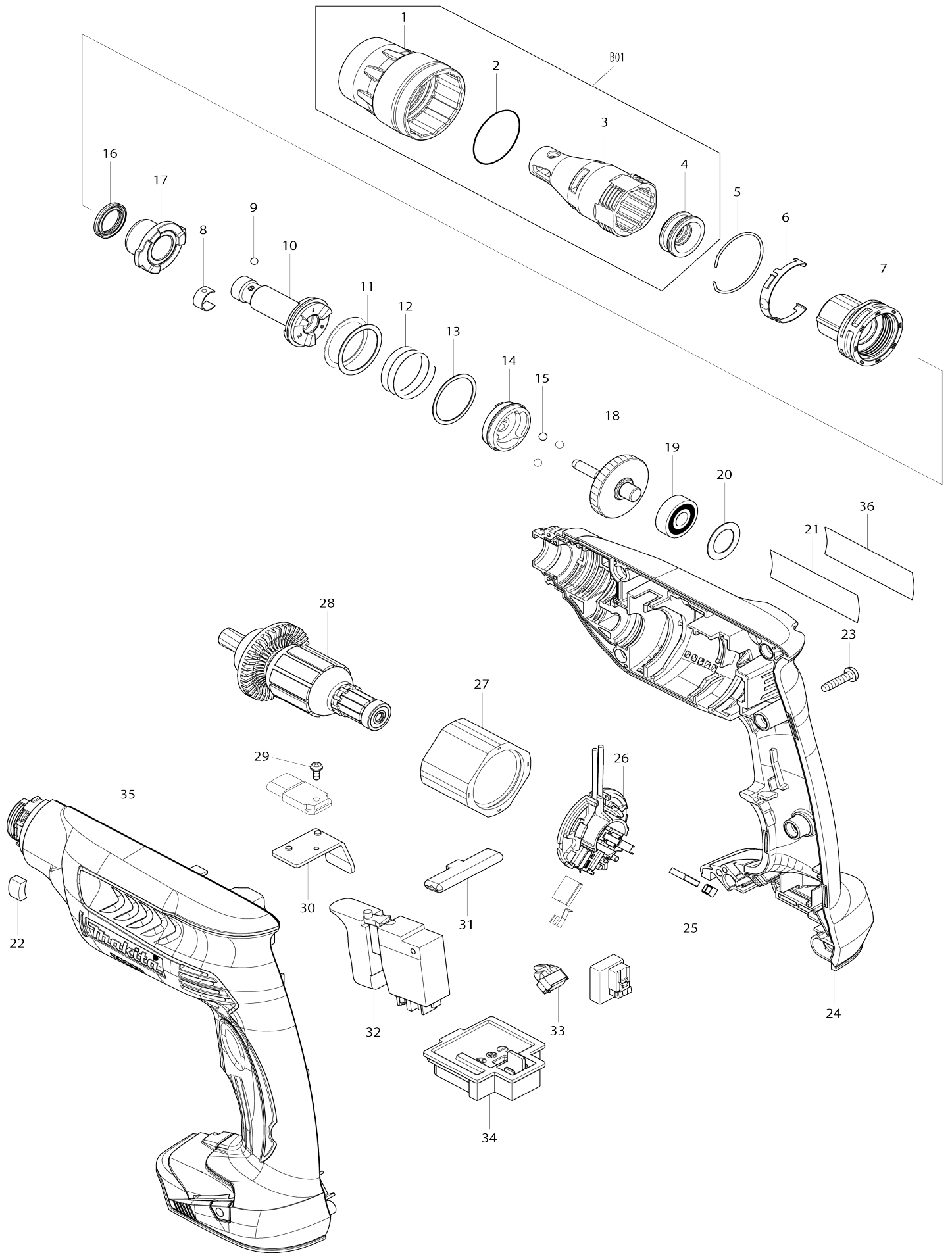


# Model No.DFS451 CORDLESS SCREWDRIVER



# Model No.DFS451 CORDLESS SCREWDRIVER

Item No.	Parts No.	Description	Interchangability	Q'ty	New/Old	Note1	Note2
001	450881-6	LOCK RING		1	*		
001-1	455591-0	LOCK RING	O	1			
002	424235-3	SEAL RING 30		1			
003	158875-2	LOCATOR S COMPLETE		1			
004	424163-2	DUST SEAL SLEEVE		1			
005	234266-2	RING SPRING 33		1			
006	232245-4	LEAF SPRING		1			
007	141100-8	LOCATOR BASE COMPLETE		1			
008	232050-9	LEAF SPRING		1			
009	216001-0	STEEL BALL 3.5		1			
010	140771-8	SPINDLE 125S COMPLETE		1			
011	267331-2	FLAT WASHER 25		2			
012	234017-3	COMPRESSION SPRING 25		1			
013	267332-0	FLAT WASHER 26		1			
014	223170-0	CLUTCH CAM 125S		1			
015	216008-6	STEEL BALL 4		3			
016	213184-7	X-RING 14		1			
017	142306-1	BEARING COMPLETE		1			
018	140772-6	GEAR COMPLETE		1			
019	211032-4	BALL BEARING 608ZZ		1			
020	253192-6	FLAT WASHER 14		1			
021	815G48-9	Name plate DFS451		1			
022	423413-2	RUBBER PLATE		1			
023	265995-6	TAPPING SCREW 4X18		7			
024	187092-7	Housing set (blue)		1			
C10	263005-3	RUBBER PIN 6		2			
D10		INC. 35					
025	194427-5	CARBON BRUSH SET CB-440		1			
026	638868-0	BRUSH HOLDER COMPLETE		1			
C10	688163-8	LINE FILTER		1			
027	638426-2	YOKE UNIT		1			
028	619277-2	Armature		1	*		
028-1	619351-6	Armature	S	1			
029	911006-2	PAN HEAD SCREW M3X8		1			
030	689150-0	HEAT SINK		1			
031	452516-5	F/R CHANGE LEVER		1			
032	638869-8	SWITCH UNIT		1			
C10	688164-6	LINE FILTER		1			
033	620030-1	Light circuit		1			
034	643852-2	TERMINAL		1			
035	187092-7	Housing set (blue)		1			
C10	263005-3	RUBBER PIN 6		2			
D10		INC. 24					
036	892812-3	CLEAR LABEL		1			
037	267104-3	FLAT WASHER 12		1			
A01	266622-8	+ TRUSS HEAD SCREW M4X12		1			
A02	346317-0	HOOK		1			

A03	784261-7	+BIT 2-25		2		
A04	784811-8	MAGNETIC CONNECT BIT 6.35-60		1		
B01	197025-4	LOCATOR S SET		1		
D10		INC. 1-4				
A05	450128-8	BATTERY COVER		1		
A06	***DC18RC	DC18RC FAST CHARGER		1		
A07	194204-5	BATTERY BL1830 SET		2	*	
A07-1	194204-5	BATTERY BL1830 SET	O	2	*	
A07-2	197600-6	BATTERY BL1830B SET	<	2	*	
A07-3	197600-6	BATTERY BL1830B SET	O	2		
A08	141490-9	PLASTIC CARRYING CASE COMPLETE		1	*	
C10	162315-4	LATCH		2	*	
C20	452137-3	HANDLE		1	*	
A08-1	821645-9	PLASTIC CARRYING CASE	O	1		
C10	162315-4	LATCH		2		
C20	452137-3	HANDLE		1		
A08	821550-0	CONNECTOR PLASTIC CASE (TYPE2)		1		
C10	453974-8	LATCH		4		
A09	837805-3	INNER TRAY		1		
A10	802X28-6	Indication label DFS451RFJ		1		
A11	802X29-4	Plastic case label DFS451RFJ		2		
A05	821550-0	CONNECTOR PLASTIC CASE (TYPE2)		1		
C10	453974-8	LATCH		4		
A06	837805-3	INNER TRAY		1		
A07	802X30-9	Indication label DFS451ZJ		1		
A08	802X31-7	Plastic case label DFS451ZJ		2		
A07	196399-0	BATTERY BL1840 SET		2	*	
A07-1	196399-0	BATTERY BL1840 SET	O	2	*	
A07-2	197265-4	BATTERY BL1840B SET	<	2	*	
A07-3	197265-4	BATTERY BL1840B SET	O	2		
A10	804G39-5	Indication label DFS451RMJ		1		
A11	804G40-0	Plastic case label DFS451RMJ		2		

Please state Parts No. when your order.

Print Date 25/10/2023