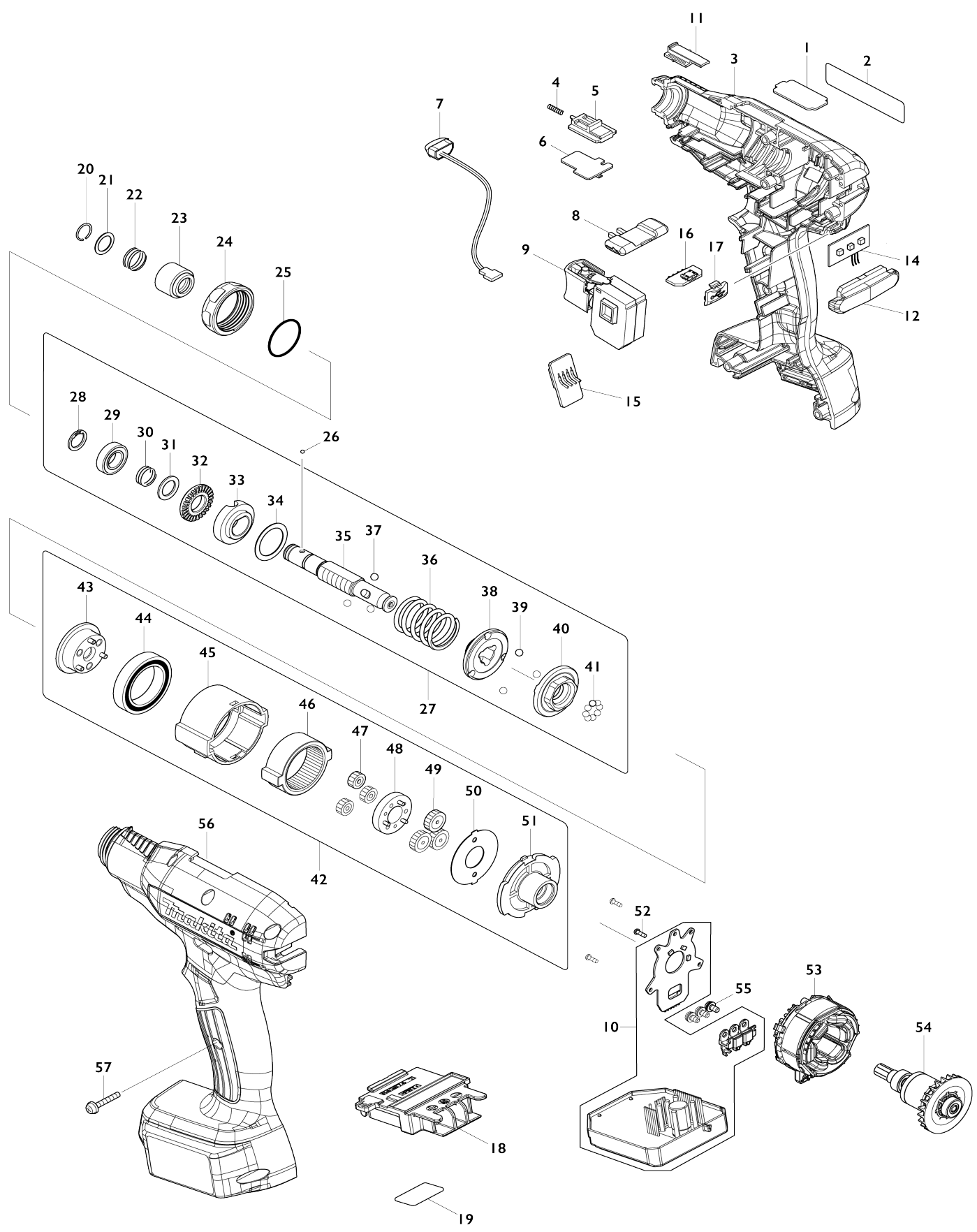


Model No.DFT025F CORDLESS SCREWDRIVER



Model No.DFT025F CORDLESS SCREWDRIVER

| Item No. | Parts No. | Description | Interchangeability | Q'ty | New/Old | Note1 | Note2 |
|----------|-----------|--------------------------|--------------------|------|---------|-------|-------|
| 001 | 345647-6 | PLATE L | | 1 | | | |
| 002 | 857U36-4 | DFT025F NAME PLATE | | 1 | | | |
| 003 | 183R48-6 | HOUSING SET | | 1 | | | |
| C10 | 263005-3 | RUBBER PIN 6 | | 2 | | | |
| C20 | 931002-4 | HEX. NUT M3 | | 7 | | | |
| D10 | | INC. 56 | | | | | |
| 004 | 233025-1 | COMPRESSION SPRING 2 | | 1 | | | |
| 005 | 140U90-8 | SWITCH LEVER COMPLETE | | 1 | * | | |
| 005-1 | 141R28-8 | SWITCH LEVER COMPLETE | < | 1 | | | |
| 006 | 620D61-4 | SENSOR CIRCUIT | | 1 | | | |
| 007 | 620521-2 | LED CIRCUIT | | 1 | | | |
| 008 | 457469-3 | F/R CHANGE LEVER | | 1 | | | |
| 009 | 651082-1 | SWITCH C3JW-1B-S | | 1 | | | |
| 010 | 620D88-4 | CONTROLLER | | 1 | | | |
| 011 | 412712-7 | CHANGE PLATE | | 1 | | | |
| 012 | 457484-7 | LENS | | 1 | | | |
| 014 | 620622-6 | LED CIRCUIT | | 1 | | | |
| 015 | 620621-8 | BUZZER CIRCUIT | | 1 | | | |
| 016 | 620A99-1 | USB CIRCUIT | | 1 | | | |
| 017 | 144709-5 | USB COVER COMPLETE | | 1 | | | |
| 018 | 643874-2 | TERMINAL | | 1 | | | |
| 019 | 857U40-3 | DFT025F SERIAL NO. LABEL | | 1 | | | |
| 020 | 233930-2 | RING SPRING 9 | | 1 | | | |
| 021 | 267070-4 | FLAT WASHER 10 | | 1 | | | |
| 022 | 232374-3 | COMPRESSION SPRING 10A | | 1 | | | |
| 023 | 161607-8 | BIT SLEEVE | | 1 | | | |
| 024 | 457530-6 | LOCK NUT M28 BLACK | | 1 | | | |
| 025 | 213836-0 | O-RING 22 | | 1 | | | |
| 026 | 216015-9 | STEEL BALL 2.4 | | 2 | | | |
| 027 | 123937-5 | CLUTCH ASSEMBLY 2M | | 1 | * | | |
| D10 | | INC. 28-41 | | | | | |
| 027-1 | 122B09-5 | CLUTCH ASSEMBLY 2M R | < | 1 | | | |
| D10 | | INC. 28-41 | | | | | |
| 028 | 961026-6 | RETAINING RING S-10 | | 1 | | | |
| 029 | 210076-1 | BALL BEARING 6800LLB | | 1 | | | |
| 030 | 232375-1 | COMPRESSION SPRING 10B | | 1 | * | | |
| 030-1 | 232656-3 | COMPRESSION SPRING 11 | O | 1 | | | |
| 031 | 267047-9 | FLAT WASHER 10 | | 1 | | | |
| 032 | 326953-8 | LOCK NUT M12 | | 1 | | | |
| 033 | 144421-7 | ADJUST RING COMPLETE | | 1 | | | |
| 034 | 253391-0 | FLAT WASHER 18 | | 1 | | | |
| 035 | 326944-9 | SPINDLE M | | 1 | * | | |
| 035-1 | 327644-4 | SPINDLE M R | < | 1 | * | | |
| 035-2 | 327644-4 | SPINDLE M R | O | 1 | | | |
| 036 | 232372-7 | COMPRESSION SPRING 18A | | 1 | | | |
| 037 | 216024-8 | STEEL BALL 4 | | 3 | | | |
| 038 | 223185-7 | CAM A | | 1 | | | |
| | | | | | | | |

| | | | | | | |
|-----|----------|-----------------------|--|---|--|--|
| 039 | 216024-8 | STEEL BALL 4 | | 3 | | |
| 040 | 223186-5 | CAM B | | 1 | | |
| 041 | 216001-0 | STEEL BALL 3.5 | | 8 | | |
| 042 | 127682-4 | GEAR ASSEMBLY O | | 1 | | |
| D10 | | INC. 43-51 | | | | |
| 043 | 144424-1 | CARRIER COMPLETE B | | 1 | | |
| 044 | 211375-4 | BALL BEARING 6805LLB | | 1 | | |
| 045 | 412713-5 | GEAR CASE | | 1 | | |
| 046 | 221546-5 | INTERNAL GEAR 47 | | 1 | | |
| 047 | 221543-1 | SPUR GEAR 13 | | 3 | | |
| 048 | 144422-5 | SPUR GEAR 20 COMPLETE | | 1 | | |
| 049 | 221544-9 | SPUR GEAR 18 | | 3 | | |
| 050 | 267774-8 | LOCK WASHER | | 1 | | |
| 051 | 418003-4 | MOTOR BRACKET | | 1 | | |
| 052 | 266490-9 | TAPPING SCREW PT 2X6 | | 3 | | |
| 053 | 629A21-5 | STATOR | | 1 | | |
| 054 | 619440-7 | ROTOR | | 1 | | |
| 055 | 652069-6 | FLAT HEAD SCREW M3X6 | | 3 | | |
| 056 | 183R48-6 | HOUSING SET | | 1 | | |
| C10 | 263005-3 | RUBBER PIN 6 | | 2 | | |
| C20 | 931002-4 | HEX. NUT M3 | | 7 | | |
| D10 | | INC. 3 | | | | |
| 057 | 251581-9 | PAN HEAD SCREW M3X20 | | 7 | | |

Please state Parts No. when your order.

Print Date 25/10/2023