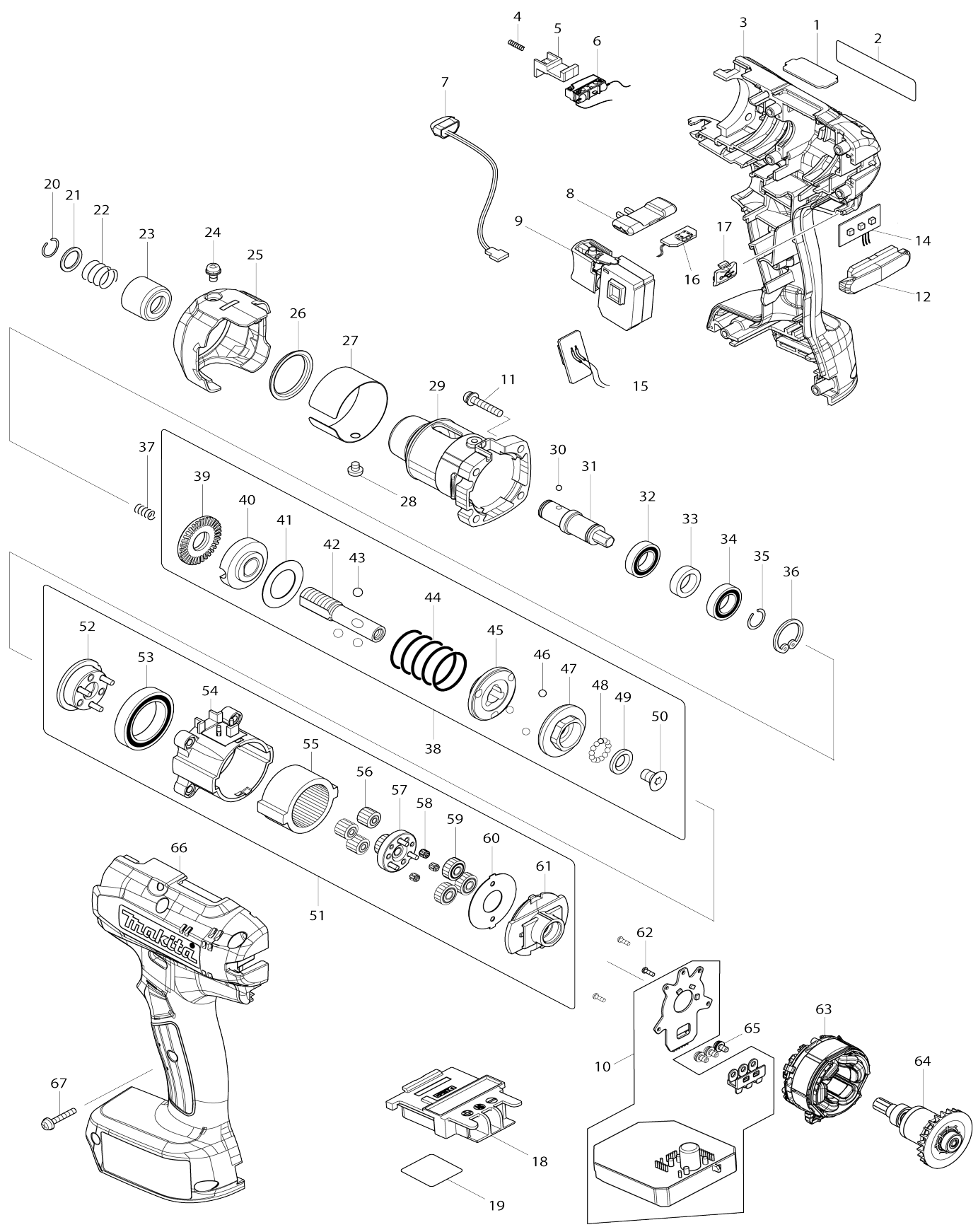


Model No. DFT127F CORDLESS SCREWDRIVER



Model No.DFT127F CORDLESS SCREWDRIVER

Item No.	Parts No.	Description	Interchangability	Q'ty	New/Old	Note1	Note2
001	345345-2	PLATE I		1			
002	853A60-5	DFT127F NAME PLATE		1			
003	183G11-3	HOUSING SET		1			
C10	263005-3	RUBBER PIN 6		2			
C20	931002-4	HEX. NUT M3		7			
D10		INC. 66					
004	233025-1	COMPRESSION SPRING 2		1			
005	418002-6	SWITCH LEVER		1			
006	632K18-5	SWITCH UNIT		1			
007	620521-2	LED CIRCUIT		1			
008	457469-3	F/R CHANGE LEVER		1			
009	651082-1	SWITCH C3JW-1B-S		1			
010	620620-0	CONTROLLER		1	*		
010-1	620858-7	CONTROLLER	<	1	*		
010-2	620G92-1	CONTROLLER	<	1			
011	265145-3	+ PAN HEAD SCREW M4X22		4			
012	457484-7	LENS		1			
014	620622-6	LED CIRCUIT		1			
015	620621-8	BUZZER CIRCUIT		1			
016	620623-4	USB CIRCUIT		1			
017	144709-5	USB COVER COMPLETE		1			
018	643850-6	TERMINAL		1			
019	853A63-9	DFT127F SERIAL NO. LABEL		1			
020	231965-7	RING SPRING 10		1			
021	267143-3	FLAT WASHER 11		1			
022	233005-7	COMPRESSION SPRING 13		1			
023	162218-2	SLEEVE		1			
024	265171-2	PAN HEAD SCREW M4X8		1			
025	457470-8	CLUTCH CASE COVER		1			
026	424977-9	RING 25 BRACK		1			
027	345351-7	RING 38I		1			
028	265127-5	+ PAN HEAD SCREW M4X4		1			
029	319568-8	CLUTCH CASE		1			
030	216019-1	STEEL BALL 3		2			
031	324377-2	SPINDLE M		1			
032	211136-2	BALL BEARING 6801LLB		1			
033	257011-8	RING 12		1			
034	211136-2	BALL BEARING 6801LLB		1			
035	231951-8	RING SPRING 11		1			
036	962111-8	RETAINING RING R-21		1			
037	233019-6	COMPRESSION SPRING 5		1	*		
037-1	232657-1	COMPRESSION SPRING 4	O	1			
038	125394-3	CLUTCH ASS'Y G		1	*		
D10		INC. 39-50					
038-1	125394-3	CLUTCH ASS'Y G	O	1	*		
D10		INC. 39-50					
038-2	122B14-2	CLUTCH ASSEMBLY Q R	<	1			

D10		INC. 39-47				
039	324834-0	LOCK NUT M12		1		
040	158408-3	ADJUST RING COMPLETE		1		
041	267276-4	FLAT WASHER 18		1		
042	324296-2	SPINDLE		1	*	
042-1	327645-2	SPINDLE R	S	1	*	
042-2	327645-2	SPINDLE R	O	1		
043	216018-3	STEEL BALL 5.0		3		
044	233358-4	COMPRESSION SPRING 19C		1		
045	223146-7	CAM D		1		
046	216024-8	STEEL BALL 4		3	*	
046-1	216024-8	STEEL BALL 4	S	10		
047	223139-4	CAM A		1	*	
047-1	223187-3	CAM F	S	1		
048	216019-1	STEEL BALL 3		13	*	
049	267247-1	FLAT WASHER 7		1	*	
050	266305-0	TORX C.S HEAD SCREW M5X10		1	*	
051	123934-1	GEAR ASSEMBLY G		1	*	
D10		INC. 52-61				
051-1	123934-1	GEAR ASSEMBLY G	O	1		
D10		INC. 52-61				
052	144383-9	CARRIER COMPLETE D		1		
053	211375-4	BALL BEARING 6805LLB		1		
054	418004-2	GEAR CASE		1	*	
054-1	418004-2	GEAR CASE	O	1		
055	227048-9	INTERNAL GEAR 47		1		
056	221537-6	SPUR GEAR 16		3		
057	144385-5	SPUR GEAR 13 COMPLETE		1		
058	212132-3	NEEDLE CAGE 205		3	*	
058-1	212194-1	NEEDLE CAGE 205	<	3		
059	221540-7	SPUR GEAR 19		3		
060	267774-8	LOCK WASHER		1		
061	457468-5	MOTOR BRACKET		1		
062	266490-9	TAPPING SCREW PT 2X6		3		
063	629262-7	STATOR		1		
064	619443-1	ROTOR		1		
065	652069-6	FLAT HEAD SCREW M3X6		3		
066	183G11-3	HOUSING SET		1		
C10	263005-3	RUBBER PIN 6		2		
C20	931002-4	HEX. NUT M3		7		
D10		INC. 3				
067	265095-2	PAN HEAD SCREW M3X20		7		
A01	661432-2	USB CABLE		1	*	
F05	195231-5	ANTI KICK BACK HEAD M ASSEMBLY		1		
F33	197709-4	BATTERY BL1460B SET		1		
F34	197710-9	BATTERY BL1460B SET		1		

Please state Parts No. when your order.

Print Date 25/10/2023