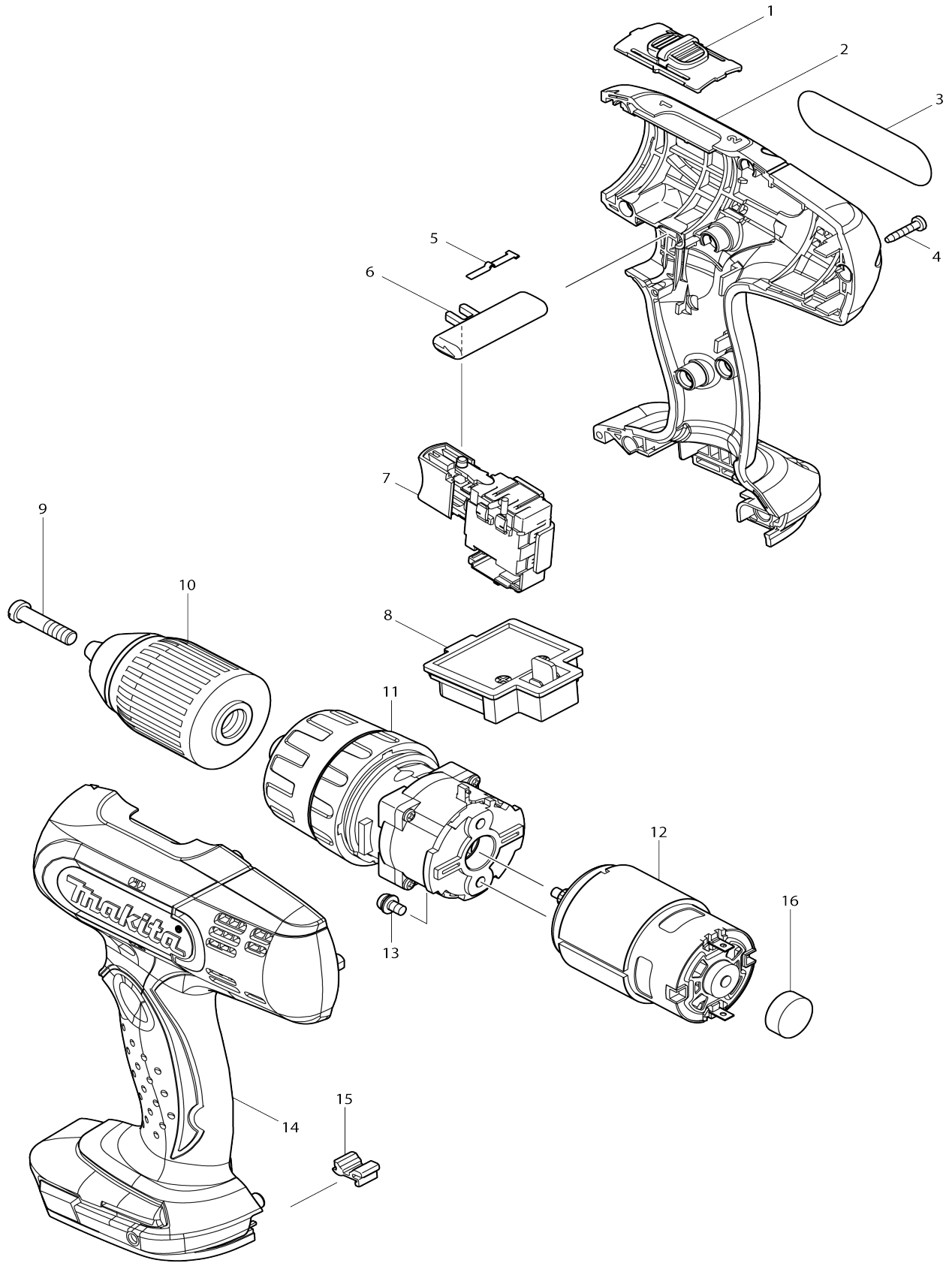


Model No.DHP453 CORDLESS PERCUSSN-DRIVER DRILL



Model No.DHP453 CORDLESS PERCUSSN-DRIVER DRILL

Item No.	Parts No.	Description	Interchangability	Q'ty	New/Old	Note1	Note2
001	125310-5	SPEED CHANGE LEVER ASS'Y		1			
C10	231433-0	COMPRESSION SPRING 4		2			
002	187363-2	HOUSING SET		1			
C10	263005-3	RUBBER PIN 6		2			
D10		INC. 14					
003	815J03-9	DHP453 NAME PLATE		1			
004	266130-9	TAPPING SCREW BIND PT 3X16		9			
005	232182-2	LEAF SPRING		1			
006	419250-0	F/R CHANGE LEVER		1			
007	632A23-2	SWITCH UNIT		1			
C10	654208-4	RECEPTACLE		2			
008	643852-2	TERMINAL		1			
009	251468-5	- FLAT HEAD SCREW M6X22		1			
010	766004-9	KEYLESS DRILL CHUCK 13		1			
011	125485-0	GEAR ASS'Y		1			
012	629937-8	DC MOTOR		1			
013	911108-4	PAN HEAD SCREW M4X8		2			
014	187363-2	HOUSING SET		1			
C10	263005-3	RUBBER PIN 6		2			
D10		INC. 2					
015	424476-1	CUSHION		1			
016	421940-3	CAP		1			
A01	784636-0	+ - BIT 2-65		1			
A02	***DC18RC	DC18RC FAST CHARGER		1			
A03	194204-5	BATTERY BL1830 SET		2	*		
A03-1	194204-5	BATTERY BL1830 SET	O	2	*		
A03-2	197600-6	BATTERY BL1830B SET	<	2	*		
A03-3	197600-6	BATTERY BL1830B SET	O	2			
A04	450128-8	BATTERY COVER		1			
A05	158777-2	PLASTIC CARRYING CASE		1			
C10	163455-1	LATCH		2			
C20	419360-3	HANDLE		1			
E02	688165-4	LINE FILTER		1			
F01	194649-7	BATTERY PROTECTOR		1			
C10	251314-2	+ SCREW M4X12		2			
F02	194654-4	HOOK SET		1			
C10	251314-2	+ SCREW M4X12		1			
F03-1	196235-0	BATTERY BL1815N SET	O	1			
F04	196306-3	KEYLESS DRILL CHUCK 13 SET		1			
F07-2	196235-0	BATTERY BL1815N SET	O	1			
F08-1	196449-1	BATTERY BL1815N SET	O	1			
F09-2	196449-1	BATTERY BL1815N SET	O	1			
A02	***DC18SD	DC18SD BATTERY CHARGER		1			
A03	194513-2	BATTERY BL1815 SET		2			
A05	194686-1	TOOL CHEST		1			
A05	821550-0	CONNECTOR PLASTIC CASE (TYPE2)		1			
C10	453974-8	LATCH		4			

A06	837863-9	INNER TRAY		1		
A07	803E29-3	DHP453RHJ INDICATION LABEL		1		
A08	803E33-2	DHP453RHJ PLASTIC CASE LABEL		2		
A02-1	***DC18SD	DC18SD BATTERY CHARGER	O	1		
A03	196235-0	BATTERY BL1815N SET		2	*	
A03-1	196235-0	BATTERY BL1815N SET	O	2		
A03	196460-3	BATTERY BL1820 SET		2	*	
A03-1	197254-9	BATTERY BL1820B SET	<	2	*	
A03-2	197254-9	BATTERY BL1820B SET	O	2		
A07	803E31-6	DHP453SHJ INDICATION LABEL		1		
A08	803E35-8	DHP453SHJ PLASTIC CASE LABEL		2		
A06	837916-4	INNER TRAY		1		
A07	803E39-0	DHP453SHLJ INDICATION LABEL		1		
A08	803E40-5	DHP453SHLJ PLASTIC CASE LABEL		2		
A09	DEZML186	18V L.E.D. FLASH LIGHT (BULK)		1	*	
A09-1	DEZDML186	L.E.D. FLASHLIGHT (BULK/EUR)	<	1	*	
A09-2	DEBDML186	LED FLASHLIGHT	<	1		
A07	803E30-8	DHP453RYJ INDICATION LABEL		1		
A08	803E34-0	DHP453RYJ PLASTIC CASE LABEL		2		
A05	824754-3	PLASTIC CASE		1		
C10	419216-0	HANDLE		1		
C20	417724-5	LATCH		2		
C30	419268-1	PLASTIC CASE LID		1		
C40	419269-9	PLATE		5		
C50	324667-3	SHAFT		1		
A06	803E48-9	DHP453SYLE PLASTIC CASE LABEL		1		
A07	DEZML186	18V L.E.D. FLASH LIGHT (BULK)		1	*	
A07-1	DEZDML186	L.E.D. FLASHLIGHT (BULK/EUR)	<	1	*	
A07-2	DEBDML186	LED FLASHLIGHT	<	1		
A07	803E41-3	DHP453RAJ INDICATION LABEL		1		
A08	803E42-1	DHP453RAJ PLASTIC CASE LABEL		2		
A05	821695-4	PLASTIC CASE		1	*	
C10	452143-8	SHAFT		2	*	
C20	455522-9	SLIDE LATCH		2	*	
A05-1	186368-9	PLASTIC CASESET WITH BIT	S	1		
C10	452143-8	SHAFT		2		
C20	455522-9	SLIDE LATCH		2		
A06	D-52299	74PCS. BIT SET, MM, TYPE MZ		1	*	

Please state Parts No. when your order.

Print Date 24/10/2023