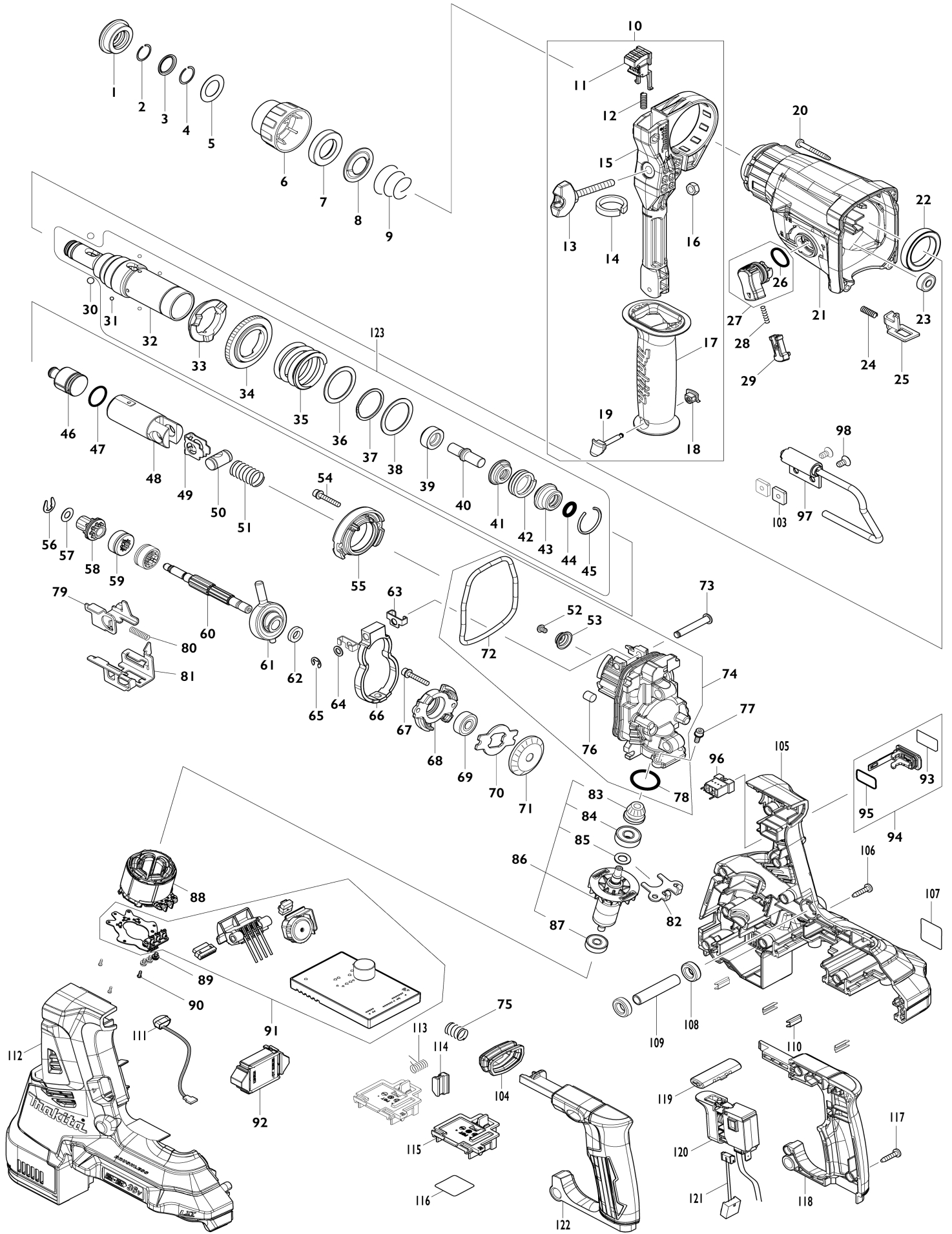


Model No.DHR282 28MM CRDLS COMBINATION HAMMER



Model No.DHR282 28MM CRDLS COMBINATION HAMMER

Item No.	Parts No.	Description	Interchangability	Q'ty	New/Old	Note1	Note2
001	286288-8	CAP 35		1			
002	233989-9	RING SPRING 14		1			
003	346834-0	WASHER 16		1			
004	233992-0	RING SPRING 15		1			
005	267114-0	FLAT WASHER 17		1			
006	455393-4	CHUCK COVER		1			
007	325813-1	RING 21		1			
008	346177-0	GUIDE WASHER		1			
009	233916-6	CONICAL COMP. SPRING 21-29		1			
010	126882-3	GRIP ASSEMBLY		1			
D10		INC. 11-19					
011	144959-2	LOCK BUTTON COMPLETE		1			
012	233360-7	COMPRESSION SPRING 4		1			
013	265625-9	THUMB SCREW M6X50		1			
014	422258-5	SPONGE SHEET		1			
015	458355-1	SIDE HANDLE BASE		1			
016	931302-2	HEX. NUT M6		1			
017	458357-7	GRIP 36		1			
018	422255-1	CAP		1			
019	161838-9	FIX PIN		1			
020	266351-3	TAPPING SCREW 4X35		4			
021	144965-7	GEAR HOUSING COMPLETE		1			
C10	213345-9	OIL SEAL 25		1			
C20	331890-3	CUP SLEEVE		1			
022	211294-4	BALL BEARING 6806LLU		1			
023	211012-0	BALL BEARING 606ZZ		1			
024	233360-7	COMPRESSION SPRING 4		1			
025	347228-2	LOCK PLATE		1			
026	213278-8	O RING 17		1			
027	135961-6	CHANGE LEVER ASSY		1			
D10		INC. 26					
028	234264-6	COMPRESSION SPRING 3		1			
029	457709-9	LOCK BUTTON		1			
030	216022-2	STEEL BALL 7.0		2			
031	216019-1	STEEL BALL 3		4			
032	142972-4	TOOL HOLDER COMPLETE		1			
C10	213344-1	OIL SEAL 9		1			
033	332139-4	DRIVING FLANGE		1			
034	227360-7	SPUR GEAR 51		1			
035	234148-8	COMPRESSION SPRING 31		1			
036	267153-0	FLAT WASHER 30		1			
037	257932-4	SPIRO LOCK WASHER 30		1			
038	267153-0	FLAT WASHER 30		1			
039	325783-4	SLEEVE 9B		1			
040	325789-2	IMPACT BOLT A		1			
041	325792-3	WASHER 10		1			
042	234149-6	COMPRESSION SPRING 20		1			

043	325793-1	O-RING CASE B		1		
044	213073-6	O RING 9		1		
045	233979-2	RING SPRING 28		1		
046	325784-2	STRIKER		1		
047	213258-4	O RING 17.5		1		
048	327079-9	PISTON CYLINDER		1		
049	346036-8	GUIDE PLATE		1		
050	324215-8	PISTON JOINT		1		
051	232449-8	COMPRESSION SPRING 14		1		
052	265627-5	H.S.BUTTON HEAD BOLT M4X6		1		
053	347344-0	SPRING GUIDE		1		
054	922148-7	HEX. SOCKET HEAD BOLT M4X25		2		
055	144960-7	INNER SUPPORT COMPLETE		1		
056	257336-0	STOP RING EXT U-6		1		
057	253186-1	FLAT WASHER 7		1		
058	226170-9	SPUR GEAR 10		1		
059	332125-5	CLUTCH CAM		2		
060	327078-1	CAM SHAFT		1		
061	219030-2	SWASH BEARING 10		1		
062	257321-3	RING 8		1		
063	346538-4	WEIGHT HOLDER GUIDE		2		
064	253077-6	FLAT WASHER 6		1		
065	961018-5	STOP RING E-5		1		
066	310869-7	COUNTER WEIGHT		1		
067	922148-7	HEX. SOCKET HEAD BOLT M4X25		2		
068	319674-9	BEARING BOX		1		
069	211032-4	BALL BEARING 608ZZ		1		
070	347343-2	BEARING RETAINER B		1		
071	221599-4	SPIRAL BEVEL GEAR 32		1		
072	213850-6	O-RING 74		1		
073	256536-9	FLAT FILLISTER HD PIN 6		1		
074	135962-4	INNER HOUSING ASSY		1		
D10		INC. 52,53,72,76,78				
075	232436-7	COMPRESSION SPRING 10		1		
076	443153-6	FELT		1		
077	922118-6	HEX. SOCKET HEAD BOLT M4X12		2		
078	213008-7	O RING 22.4		1		
079	347230-5	CHANGE PLATE B		1		
080	234343-0	COMPRESSION SPRING 5		1		
081	347229-0	CHANGE PLATE A		1		
082	346536-8	BEARING RETAINER A		1		
083	144964-9	SPIRAL BEVEL GEAR 11 COMPLETE		1		
084	210024-0	BALL BEARING 608LLU		1		
085	253835-0	FLAT WASHER 8		1		
086	519513-5	ROTOR ASSY		1	*	
D10		INC. 83-85,87				
086-1	619841-9	ROTOR	O	1		
D10		INC. 83-85,87				
087	210022-4	BALL BEARING 626DDW		1		
088	629340-3	STATOR		1		
089	652069-6	FLAT HEAD SCREW M3X6		3		

090	266490-9	TAPPING SCREW PT 2X6		3		
091	620814-7	CONTROLLER		1		
092	620816-3	ACCELEROMETER CIRCUIT		1	*	
092-1	620816-3	ACCELEROMETER CIRCUIT	S	1		
093	813T75-8	CAP LABEL		1	*	
093-1	818H48-4	CAP LABEL	<	1		
094	183H92-3	CAP SET		1	*	
D10		INC. 93,95				
094-1	183J85-2	CAP SET	O	1	*	
D10		INC. 93,95				
094-2	140G30-2	CAP COMPLETE	<	1		
D10		INC. 93,95				
095	213275-4	O RING 18		1	*	
095-1	213218-6	O RING 16	<	1	*	
095-2	213A05-9	O-RING16	O	1		
096	632L87-2	CONNECTOR UNIT		1		
097	135963-2	HOOK ASSY		1		
098	912207-5	COUNTERSUNK HEAD SCREW M5 X10		2		
103	264002-2	SQUARE NUT M5		2		
104	422257-7	BELLOWS		1		
105	183J30-7	HOUSING SET		1	*	
C10	263005-3	RUBBER PIN 6		8	*	
D10		INC. 112				
105-1	183K53-1	HOUSING SET	<	1		
C10	263005-3	RUBBER PIN 6		8		
D10		INC. 112				
106	266326-2	TAPPING SCREW 4X18		9		
107	854J30-1	DHR282 NAME PLATE		1		
108	422256-9	RUBBER RING 10		2		
109	257438-2	SLEEVE 10		1		
110	346783-1	PLATE		4		
111	620549-0	LED CIRCUIT		1		
112	183J30-7	HOUSING SET		1	*	
C10	263005-3	RUBBER PIN 6		8	*	
D10		INC. 105				
112-1	183K53-1	HOUSING SET	<	1		
C10	263005-3	RUBBER PIN 6		8		
D10		INC. 105				
113	233598-4	TORSION SPRING 6		1		
114	313226-8	OPENER		1		
115	644809-6	TERMINAL		2		
116	854J37-7	DHR282 SERIAL NO. LABEL		1		
117	266326-2	TAPPING SCREW 4X18		4		
118	183J29-2	HANDLE SET		1		
D10		INC. 122				
119	453124-5	F/R CHANGE LEVER		1		
120	651366-7	SWITCH C3JW-6B-24		1		
121	632L95-3	LEAD UNIT		1		
122	183J29-2	HANDLE SET		1		
D10		INC.118				
123	135966-6	TOOL HOLDER ASSY		1		

D10		INC. 31-45				
A01	198900-7	WIRELESS UNIT SET		1	*	
A01-1	198900-7	WIRELESS UNIT SET	<	1	*	
A01-2	198900-7	WIRELESS UNIT SET	<	1		
A02	198993-4	GREASE VESSEL SET		1		
A04	331886-4	DEPTH GAUGE		1		
A05	443122-7	CLOTH		1		
A11	839559-8	INNER TRAY		1		
A12	821552-6	CONNECTOR PLASTIC CASE (TYP E4)		1		
C10	453974-8	LATCH		4		
A13	817L44-3	DHR282ZJU INDICATION LABEL		1		
A14	817L40-1	DHR282ZJU PLASTIC CASE LABEL		2	*	
A14-1	817L41-9	DHR282ZJU PLASTIC CASE LABEL	O	2		
B01	199233-3	HAMMER SERVICE KIT		1		
C10	195127-0	OIL VESSEL SET		2		
D10		INC. 1,2,4,30,44,45,47				
E01	818S15-5	CLEAR LABEL		1	*	
F15-1	199557-7	FILTER SET	<	1		
F22-1	199581-0	DX08DUST COLLECTION SYSTEM SET	<	1		
F53-2	198900-7	WIRELESS UNIT SET	<	1		
094	183J85-2	CAP SET		1	*	
094-1	140G30-2	CAP COMPLETE	<	1		
095	213218-6	O RING 16		1	*	
095-1	213A05-9	O-RING16	O	1		
A13	817L39-6	DHR282ZJ INDICATION LABEL		1		
A14	817L38-8	DHR282ZJ PLASTIC CASE LABEL		2		

Please state Parts No. when your order.

Print Date 01/29/2024