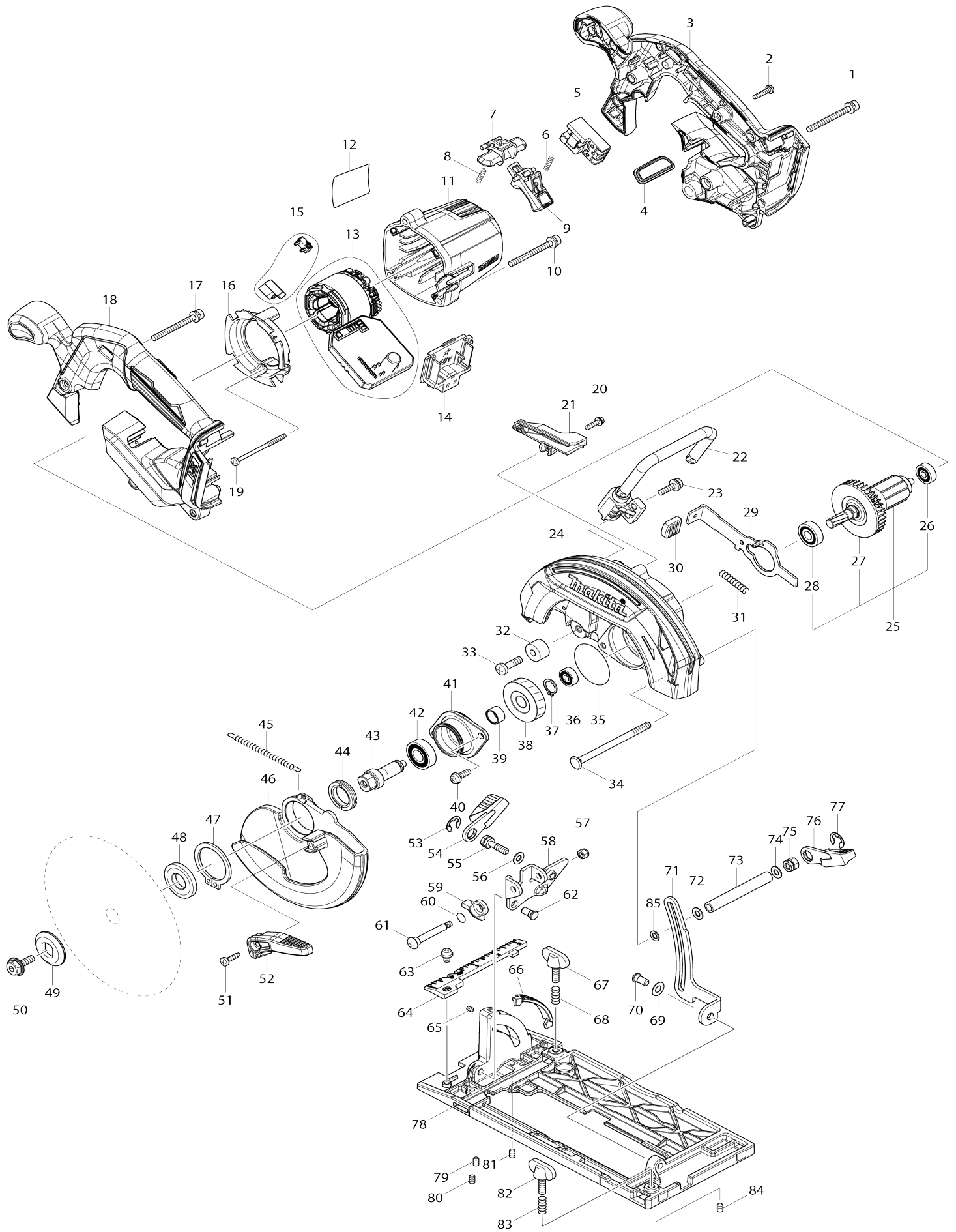


Model No.DHS680 165MM CORDLESS CIRCULAR SAW



Model No.DHS680 165MM CORDLESS CIRCULAR SAW

Item No.	Parts No.	Description	Interchangability	Q'ty	New/Old	Note1	Note2
001	911263-2	PAN HEAD SCREW M5X40		1			
002	265995-6	TAPPING SCREW 4X18		7			
003	183A15-9	HANDLE SET		1			
C10	263005-3	RUBBER PIN 6		2			
D10		INC. 18					
004	142948-1	INDICATION PLATE COMPLETE		1			
005	650734-1	SWITCH TG73BDS-2		1			
006	231469-9	COMPRESSION SPRING 4		1			
007	419664-3	LOCK OFF LEVER		1			
008	231469-9	COMPRESSION SPRING 4		1			
009	455480-9	SWITCH LEVER		1			
010	911263-2	PAN HEAD SCREW M5X40		3			
011	455437-0	MOTOR HOUSING		1			
012	850H69-0	DHS680 NAME PLATE		1			
013	632D90-5	STATOR UNIT		1	*		
013-1	629348-7	STATOR UNIT	<	1	*		
013-2	629B61-9	STATOR	S	1			
014	644808-8	TERMINAL		1			
015	632D81-6	SWITCH UNIT		1			
016	455440-1	BAFFLE PLATE		1			
017	911263-2	PAN HEAD SCREW M5X40		1			
018	183A15-9	HANDLE SET		1			
C10	263005-3	RUBBER PIN 6		2			
D10		INC. 3					
019	266091-3	TAPPING SCREW 4X50		2			
020	911128-8	P.H.SCREW M4X16 WITH WR		1			
021	455483-3	DUCT		1			
022	123269-0	HOOK ASSEMBLY		1			
023	911233-1	PAN HEAD SCREW M5X20		2			
024	142942-3	BLADE CASE COMPLETE		1	*		
C10	213953-6	O RING 24		1	*		
024-1	143256-3	BLADE CASE COMPLETE	<	1	*		
C10	213953-6	O RING 24		1	*		
024-2	141P24-4	BLADE CASE COMPLETE	O	1			
C10	213953-6	O RING 24		1			
025	519359-9	ROTOR ASS'Y		1	*		
D10		INC. 26-28					
025-1	519359-9	ROTOR ASS'Y	O	1			
D10		INC. 26-28					
026	210022-4	BALL BEARING 626DDW		1			
027	240045-8	FAN 55		1			
028	210051-7	BALL BEARING 609LLB		1			
029	346837-4	SHAFT LOCK		1			
030	286275-7	CAP		1			
031	233117-6	COMPRESSION SPRING 6		1			
032	262552-1	RUBBER SLEEVE 6		1			
033	251247-1	+ PAN HEAD SCREW M6X20		1			

034	266194-3	FLAT HEAD SCREW M6X90		1		
035	213565-5	O RING 42		1		
036	210028-2	BALL BEARING 606ZZ		1	*	
036-1	210137-7	BALL BEARING 606ZZ	O	1		
037	961052-5	RETAINING RING (EXT) S-12		1		
038	227794-4	HELICAL GEAR 50		1		
039	257349-1	SLEEVE 12		1		
040	911223-4	PAN HEAD SCREW M5X16		2		
041	319212-7	BEARING BOX		1		
042	211131-2	BALL BEARING 6001DDW		1	*	
042-1	210216-1	BALL BEARING 6001DDW	>	1		
043	326459-6	SPINDLE		1		
044	285845-9	BEARING RETAINER 19-29		1		
045	231878-2	TENSION SPRING 4		1		
046	319211-9	SAFETY COVER		1		
047	961152-1	RETAINING RING (EXT) S-34		1		
048	224473-5	INNER FLANGE 35		1	*	
048-1	224593-5	INNER FLANGE 35	<	1		
049	224409-4	OUTER FLANGE 35		1		
050	266924-2	HEX. SOCKET HEX. BOLT M6X18		1		
051	266034-5	TAPPING SCREW CT 4X16		1		
052	272281-8	LEVER 39		1		
053	257982-9	BOW STOP RING E-8		1		
054	272272-9	LEVER 45		1		
055	266735-5	HEX.BOLT M6X20		1	*	
055-1	265B21-3	HEX.BOLT M6X20	S	1		
056	941151-9	FLAT WASHER 6		1	*	
057	252103-8	HEX. LOCK NUT M5-8		1		
058	346836-6	ANGULAR GUIDE		1		
059	317986-4	STOPPER		1		
060	213062-1	O RING 9		1		
061	265084-7	+ TRUSS HEAD SCREW M5		1		
062	256480-0	SHOULDER PIN 6-7		1		
063	911203-0	PAN HEAD SCREW M5X8		1	*	
063-1	911208-0	PAN HEAD SCREW M5X10	O	1		
064	455516-4	TOP GUIDE		1		
065	266318-1	H.S.SET SCREW(FLAT POINT)M4X 6		2		
066	455517-2	BEVEL GUIDE		1		
067	251896-4	SCREW M5X20		1		
068	231007-7	COMPRESSION SPRING 6		1		
069	253058-0	FLAT WASHER 7		1	*	
070	256511-5	SHOULDER PIN 6-7		1		
071	346838-2	DEPTH GUIDE		1		
072	941151-9	FLAT WASHER 6		1		
073	332126-3	PIPE 6		1		
074	941151-9	FLAT WASHER 6		1		
075	264103-6	HEX. NUT M6		1		
076	272272-9	LEVER 45		1		
077	257982-9	BOW STOP RING E-8		1		
078	319210-1	BASE		1	*	
078-1	312B04-5	BASE	S	1		

079	266436-5	H.S.SET SCREW(FLAT POINT)M5X8		1		
080	266436-5	H.S.SET SCREW(FLAT POINT)M5X8		1		
081	266436-5	H.S.SET SCREW(FLAT POINT)M5X8		1		
082	251896-4	SCREW M5X20		1		
083	231007-7	COMPRESSION SPRING 6		1		
084	266436-5	H.S.SET SCREW(FLAT POINT)M5X8		1		
085	253077-6	FLAT WASHER 6		1	*	
086	620K93-3	CONTROLLER	S	1		
087	652119-7	PAN HEAD SCREW M2X6	S	6		
A01	783203-8	HEX. WRENCH 5		1		
A02	B-09173	T.C.T.SAW BLADE 165X20X24T		1	*	
A02-1	B-62979	TCT BLADE165X25T WOOD EFFICUT	X	1		
A03	164095-8	GUIDE RULE		1		
A04	196961-1	DUST NOZZLE SET		1		
C10	911128-8	P.H.SCREW M4X16 WITH WR		1		
F08-3	197606-4	BATTERY BL1830B SET (2PIECES)	O	1		
F09-3	197600-6	BATTERY BL1830B SET	O	1		
F10-4	197599-5	BATTERY BL1830B SET	O	1		
F11-3	197267-0	BATTERY BL1840B SET	O	1		
F12-3	197265-4	BATTERY BL1840B SET	O	1		
F13	194368-5	GUIDE RAIL 1400 SET		1		
F14	194925-9	GUIDE RAIL 1900 SET		1		
F16	194367-7	GUIDE RAIL 3000 SET		1		
F18	196664-7	BEVEL GUIDE SET		1	*	
F21	194416-0	SHEET 10000 SET		1		
F22	194417-8	RUBBER SHEET 10000 SET		1		
F23	194418-6	POSITION SHEET 1400 SET		1		
F25	194910-2	POSITION SHEET 1900 SET		1		
F37	199140-0	GUIDE RAIL 1000 SET		1		
F38	199141-8	GUIDE RAIL 1500 SET		1		
F41	191B17-7	GUIDE RAIL ADAPTER D SET		1		
A05	196399-0	BATTERY BL1840 SET		2	*	
A05-1	196399-0	BATTERY BL1840 SET	O	2	*	
A05-2	197265-4	BATTERY BL1840B SET	<	2	*	
A05-3	197265-4	BATTERY BL1840B SET	O	2		
A06	450128-8	BATTERY COVER		1		
A07	821551-8	CONNECTOR PLASTIC CASE (TYP E3)		1		
C10	453974-8	LATCH		4		
A08	838182-6	INNER TRAY		1		
A09	805F49-9	DHS680RMJ INDICATION LABEL		1	*	
A09-1	805V45-3	DHS680RMJ INDICATION LABEL	O	1	*	
A09-2	816A52-5	DHS680RMJ INDICATION LABEL	O	1		
A10	805F50-4	DHS680RMJ PLASTIC CASE LABEL		2	*	
A10-1	805V77-0	DHS680RMJ PLASTIC CASE LABEL	O	2	*	
A10-2	816A53-3	DHS680RMJ PLASTIC CASE LABEL	X	2		
A11	***DC18RC	DC18RC FAST CHARGER		1		
A05-2	197280-8	BATTERY BL1850B SET		2	*	

A05-3	197280-8	BATTERY BL1850B SET	O	2			
A09	805F51-2	DHS680RTJ INDICATION LABEL		1	*		
A09-1	806H07-0	DHS680RTJ INDICATION LABEL	O	1	*		
A09-2	816A54-1	DHS680RTJ INDICATION LABEL	O	1			
A10	805F52-0	DHS680RTJ PLASTIC CASE LABEL		2	*		
A10-1	806H08-8	DHS680RTJ PLASTIC CASE LABEL	O	2	*		
A10-2	816A55-9	DHS680RTJ PLASTIC CASE LABEL	X	2			
A02	B-57320	TCT BLADE165X20X56TWOOD/M DF DB		1			
A09-2	817K38-2	DHS680RTJ1 INDICATION LABEL		1			
A10-2	817K39-0	DHS680RTJ1 PLASTIC CASE LABEL		2			
003	183F26-4	HANDLE SET		1			
011	456639-1	MOTOR HOUSING		1			
018	183F26-4	HANDLE SET		1			
A05	197280-8	BATTERY BL1850B SET		2			
A09	8055S1-4	DHS680RTJB INDICATION LABEL		1			
A10	8055S2-2	DHS680RTJB PLASTIC CASE LABEL		2			

Please state Parts No. when your order.

Print Date 24/10/2023