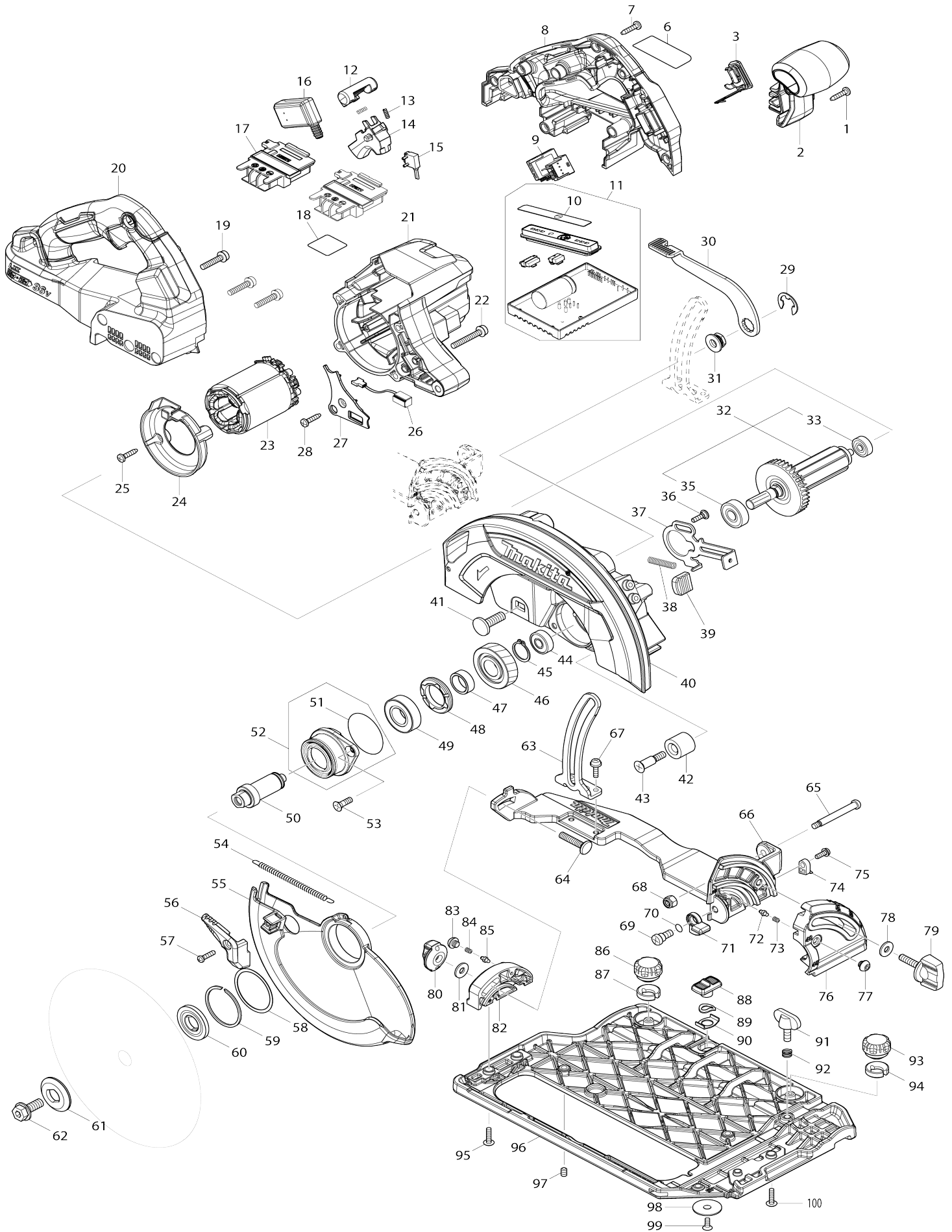


Model No.DHS783 185MM CORDLESS CIRCULAR SAW



Model No.DHS783 185MM CORDLESS CIRCULAR SAW

Item No.	Parts No.	Description	Interchangeability	Q'ty	New/Old	Note1	Note2
001	266326-2	TAPPING SCREW 4X18		1			
002	458750-5	FRONT GRIP		1			
003	140F99-0	CAP COMPLETE		1			
C10	213218-6	O RING 16		1	*		
C11	213A05-9	O-RING16	O	1			
C20	818H07-8	CAP LABEL		1			
006	855R05-1	DHS783 NAME PLATE		1			
007	266326-2	TAPPING SCREW 4X18		8			
008	183K52-3	HANDLE SET		1			
C10	263005-3	RUBBER PIN 6		4			
D10		INC. 20					
009	620750-7	SUB CONTROLLER		1			
010	812G25-2	INDICATION LABEL		1			
011	620984-2	CONTROLLER COMPLETE		1	*		
D10		INC. 10					
011-1	620L92-1	CONTROLLER COMPLETE	S	1			
D10		INC. 10					
012	419704-7	LOCK OFF BUTTON		1			
013	231433-0	COMPRESSION SPRING 4		2			
014	458594-3	SWITCH LEVER		1			
015	632M92-5	SWITCH UNIT		1			
016	651083-9	SWITCH C3XA-1PSPM		1			
017	643874-2	TERMINAL		2			
018	855R09-3	DHS783 SERIAL NO. LABEL		1			
019	911243-8	PAN HEAD SCREW M5X25		3			
020	183K52-3	HANDLE SET		1			
C10	263005-3	RUBBER PIN 6		4			
D10		INC. 8					
021	458746-6	MOTOR HOUSING		1			
022	911258-5	PAN HEAD SCREW M5X35		4			
023	629375-4	STATOR		1	*		
023-1	629C02-1	STATOR	S	1			
024	458749-0	BAFFLE PLATE		1			
025	266326-2	TAPPING SCREW 4X18		2			
026	620936-3	LED CIRCUIT		1			
027	458751-3	LIGHT COVER		1			
028	266326-2	TAPPING SCREW 4X18		1			
029	257953-6	BOW STOP RING E-12		1			
030	271447-7	LEVER 110		1			
031	252262-8	COLLERED HEX. NUT M8		1			
032	519534-7	ROTOR ASSY		1			
D10		INC. 33,35					
033	210022-4	BALL BEARING 626DDW		1			
035	210059-1	BALL BEARING 600DDW		1			
036	251529-1	+ PAN HEAD SCREW M4X14		1			
037	347441-2	SHAFT LOCK		1			
038	232381-6	COMPRESSION SPRING 6		1			

039	286039-9	CAP		1		
040	140F30-6	BLADE CASE COMPLETE		1		
C10	213434-0	O RING 26		1		
C20	818C45-0	SCALE LABEL		1		
041	266396-1	FLATHEAD SQUARENECKBOLT M 8X24		1		
042	262185-2	RUBBER SLEEVE8		1		
043	251572-0	+ COUNTERSUNK HEAD SCREW M6X30		1		
044	210029-0	BALL BEARING 608ZZ		1		
045	961057-5	RETAINING RING S-17		1		
046	226838-7	HELICAL GEAR 37		1		
047	257451-0	RING 17		1		
048	285809-3	BEARING RETAINER 23-36		1		
049	210301-0	BALL BEARING 6003DDW		1		
050	327192-3	SPINDLE		1		
051	213565-5	O RING 42		1		
052	136021-7	BEARING BOX ASSY		1		
D10		INC. 51				
053	265034-2	+ COUNTERSUNK HEAD SCREW M5X16		2		
054	232467-6	TENSION SPRING 4		1		
055	319740-2	SAFETY COVER		1		
056	271450-8	LEVER 37		1		
057	265178-8	PAN HEAD SCREW M4X16		1		
058	267337-0	FLAT WASHER 40		1		
059	257452-8	RETAINING RING (EXT) WR-40		1		
060	224593-5	INNER FLANGE 35		1		
061	224409-4	OUTER FLANGE 35		1		
062	266283-4	HEX. SOCKET HEX. BOLT M8X20		1		
063	347532-9	DEPTH GUIDE		1		
064	251920-3	CAP SQUARE NECK BOLT M6X30		1		
065	265118-6	+ PAN HEAD SCREW M5		1		
066	319829-6	FRAME		1		
067	911516-9	PAN HEAD SCREW M4X12		2		
068	252103-8	HEX. LOCK NUT M5-8		1		
069	251267-5	+ PAN HEAD SCREW M6		1		
070	213026-5	O RING 7		1		
071	319827-0	STOPPER		1		
072	263041-9	SHOULDER PIN 3-5		1		
073	231234-6	COMPRESSION SPRING 3.5		1		
074	419632-6	POSITION PLATE		1		
075	911118-1	PAN HEAD SCREW M4X12		1		
076	319830-1	FRONT ANGULAR PLATE		1		
077	266559-9	H.S.BUTTON HEAD BOLT M6X4		1		
078	253111-2	FLAT WASHER 6		1		
079	265776-8	THUMB SCREW M6X26		1		
080	252270-9	THUMB NUT M6		1		
081	253111-2	FLAT WASHER 6		1		
082	319831-9	REAR ANGULAR PLATE		1		
083	266559-9	H.S.BUTTON HEAD BOLT M6X4		1		
084	231234-6	COMPRESSION SPRING 3.5		1		

085	263041-9	SHOULDER PIN 3-5		1		
086	265775-0	THUMB SCREW M4X3		1		
087	419627-9	HOLDER		1		
088	458092-7	SLIDE LEVER		1		
089	253932-2	WAVE WASHER 10		1		
090	345977-5	PLATE		1		
091	265701-9	THUMB SCREW M6X14		1		
092	233376-2	COMPRESSION SPRING 8		1		
093	265775-0	THUMB SCREW M4X3		1		
094	419627-9	HOLDER		1		
095	265174-6	+ TRUSS HEAD SCREW M4X16		2		
096	319828-8	BASE		1		
097	266225-8	H.S.SET SCREW(FLAT POINT)M6X 8		3		
098	345748-0	LOCK WASHER		1		
099	912112-6	COUNTERSUNK HEAD SCREW M4 X10		1		
100	265174-6	+ TRUSS HEAD SCREW M4X16		2		
101	620L68-8	CONTROLLER B	S	1		
102	652119-7	PAN HEAD SCREW M2X6	S	6		
A01	164095-8	GUIDE RULE		1		
A02	196520-1	DUST NOZZLE SET		1		
C10	911128-8	P.H.SCREW M4X16 WITH WR		1		
A03	783204-6	HEX. WRENCH 6		1		
A04	B-64185	TCT BLADE190X24T WOOD EFFIC UT		1		
F02	194367-7	GUIDE RAIL 3000 SET		1		
F03	194368-5	GUIDE RAIL 1400 SET		1		
F05	194416-0	SHEET 10000 SET		1		
F06	194417-8	RUBBER SHEET 10000 SET		1		
F07	194418-6	POSITION SHEET 1400 SET		1		
F09	194910-2	POSITION SHEET 1900 SET		1		
F11	194925-9	GUIDE RAIL 1900 SET		1		
F13	196664-7	BEVEL GUIDE SET		1		
F14	199140-0	GUIDE RAIL 1000 SET		1		
F15	199141-8	GUIDE RAIL 1500 SET		1		
F16	199386-8	HOOK SET		1		
F18-2	198900-7	WIRELESS UNIT SET	<	1		
F28	1913K7-3	PARALLEL GUIDE SET(MM)		1		
A16	198900-7	WIRELESS UNIT SET		1	*	
A16-1	198900-7	WIRELESS UNIT SET	<	1	*	
A16-2	198900-7	WIRELESS UNIT SET	<	1		
A06	***DC18RD	DC18RD TWO PORT FAST CHARG ER		1		
D10		COMPO-PARTS				
A07	197280-8	BATTERY BL1850B SET		2	*	
A07-1	197280-8	BATTERY BL1850B SET	O	2		
A08	819H68-1	DHS783PT2J INDICATION LABEL		1		
A09	819H69-9	DHS783PT2J PLASTIC CASE LABE L		2		
A10	821552-6	CONNECTOR PLASTIC CASE (TYP E4)		1		
C10	453974-8	LATCH		4		

A11	839750-8	INNER TRAY		1	*		
A11-1	835C85-3	INNER TRAY	<	1			
A12	821550-0	CONNECTOR PLASTIC CASE (TYPE2)		1			
C10	453974-8	LATCH		4			
A13	454247-2	PIN 4		4			
A14	837925-3	WAVE SPONGE 240X350		1			
A15	837926-1	WAVE SPONGE 285X380		1			
A08	819H70-4	DHS783T2JU INDICATION LABEL		1			
A09	819H71-2	DHS783T2JU PLASTIC CASE LABEL		2			

Please state Parts No. when your order.

Print Date 24/10/2023