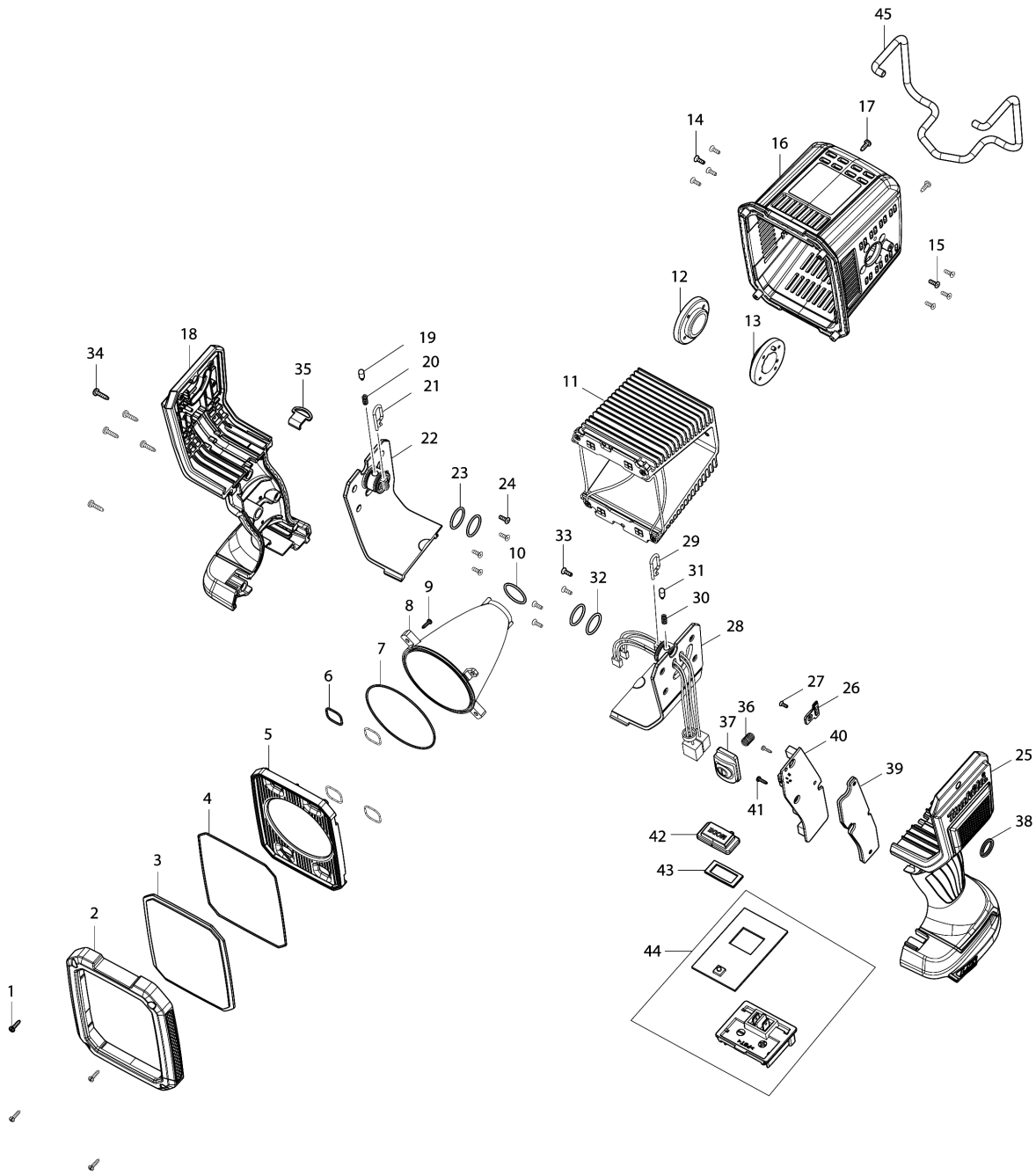


Model No.DML812 CORDLESS FLASHLIGHT



Model No.DML812 CORDLESS FLASHLIGHT

Item	Parts No.	Description	I/C	Qty	New/Old	Opt. 1	Opt. 2	Note
001	GM00001322	SCREW 2.6X8 PB		4				
002	GM00002203	LENS COVER ASSY		1				
003	GM00002204	LENS		1				
004	GM00002205	LENS O-RING		1				
005	GM00002206	REFLECTION CUP COVER		1				
006	GM00002207	LED O-RING		4				
007	GM00002208	O-RING		1				
008	GM00002209	REFLECTION CUP		1				
009	GM00001322	SCREW 2.6X8 PB		4				
010	GM00002211	O-RING		1				
011	GM00002247	LED & HEAT SINK ASSY		1				
012	GM00002218	RIGHT LATCH PLATE		1				
013	GM00002217	LEFT LATCH PLATE		1				
014	GM00002219	SCREW 2.6X7 KB		4				
015	GM00002219	SCREW 2.6X7 KB		4				
016A	GM00002220	LIGHT HEAD CASE ASSY		1				
016B	GM00002220	LIGHT HEAD CASE ASSY		1				
016C	GM00002345	LIGHT HEAD CASE ASSY(OLIVE)		1				
017	GM00002212	SCREW 3X8 PM		2				
018A	GM00002221	HOUSING ASSY		1				
018B	GM00002221	HOUSING ASSY		1				
018C	GM00002346	HOUSING ASSY(OLIVE)		1				
D10		INC. 25						
019	GM00002225	LATCH PIN		1				
020	GM00002224	COMPRESSION SPRING		1				
021	GM00002251	SPRING CLIP 2X10X25		1				
022A	GM00002237	RIGHT HOUSING COVER		1				
022B	GM00002237	RIGHT HOUSING COVER		1				
022C	GM00002348	RIGHT HOUSING COVER(OLIVE)		1				
023	GM00002226	SHAFT O-RING		2				
024	GM00002219	SCREW 2.6X7 KB		4				
025A	GM00002221	HOUSING ASSY		1				
025B	GM00002221	HOUSING ASSY		1				
025C	GM00002346	HOUSING ASSY(OLIVE)		1				
D10		INC. 18						
026	GM00002222	LINE PRESSING BLOCK		1				
027	GM00002250	SCREW 2.0X5 KB		1				
028A	GM00002248	LEFT HOUSING COVER ASSY		1				
028B	GM00002248	LEFT HOUSING COVER ASSY		1				
028C	GM00002347	LEFT HOUSING COVER ASSY(OLIVE)		1				
029	GM00002251	SPRING CLIP 2X10X25		1				
030	GM00002224	COMPRESSION SPRING		1				
031	GM00002225	LATCH PIN		1				
032	GM00002226	SHAFT O-RING		2				

Please order the parts with part number.

Print Date 24/10/2023

Model No.DML812 CORDLESS FLASHLIGHT

Item	Parts No.	Description	I/C	Qty	New/Old	Opt. 1	Opt. 2	Note
033	GM00002219	SCREW 2.6X7 KB		4				
034	GM00001012	SCREW 3X12 PB BLACK ZN		5				
035	GM00002231	STRAP HOOK		1				
036	GM00002249	SWITCH SPRING		1				
037	GM00002230	WHITE SWITCH ASSY		1				
038	GM00001292	RING (B3103184009)		1				
039	GM00002252	SILICONE & HEAT SINK		1				
040	GM00002229	MAIN PCBA		1				
041	GM00001322	SCREW 2.6X8 PB		2				
042	GM00002232	SWITCH RUBBER		1				
043	GM00002233	SWITCH SUPPORT		1				
044	GM00002235	PCBA & TERMINAL ASSY		1				
045	GM00002238	HOUSING HOOK		1				
A01	GM00002239	STRAP HOOK ASSY		1				

Please order the parts with part number.

Print Date 24/10/2023