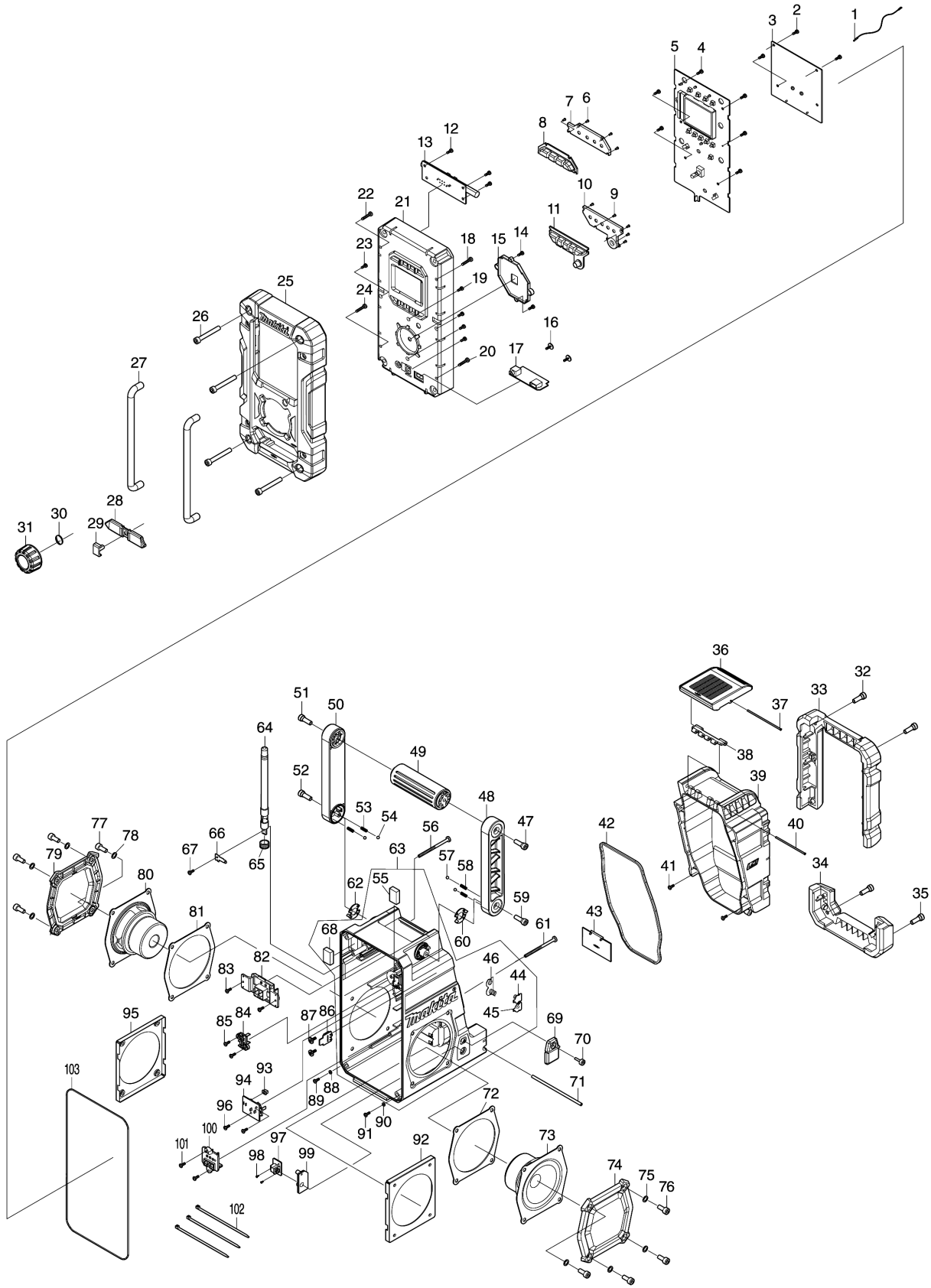


Model No.DMR108 JOB SITE RADIO



Model No.DMR108 JOB SITE RADIO

Item	Parts No.	Description	I/C	Qty	New/Old	Opt. 1	Opt. 2	Note
001	SE00000437	WIRE		1				
002	SE00000325	SCREW PTB 3X8(NI)		3				
003	SE00000477	PCB A ASS'Y (DMR108) 05AaXA2		1	*			
003-1	SE00000595	PCB A ASS'Y	O	1	*			
003-2	SE00000822	PCB A ASSEMBLY	O	1				
004	SE00000325	SCREW PTB 3X8(NI)		6				
005	SE00000480	PCB C ASS'Y EUROPE 07CaXA3		1				
006	SE09090011	SCREW 1.7		4				
007	SE00000333	POWER BUTTON HOLDER		1				
008	SE00000334	POWER BUTTON		1				
009	SE09090011	SCREW 1.7		5				
010	SE00000336	PRESET BUTTON HOLDER		1				
011	SE00000337	PRESET BUTTON		1				
012	SE00000325	SCREW PTB 3X8(NI)		3				
013	SE00000339	PCB P ANT BAR ASS'Y		1				
014	SE00000325	SCREW PTB 3X8(NI)		2				
015	SE00000239	KNOB LENS HOLDER		1	*			
015-1	SE00000656	KNOB LENS HOLDER	<	1				
016	SE00000193	SCREW 3X10		2				
017	SE00000343	PCB P USB ASS'Y		1				
018	SE09064161	SCREW M4X16		1				
019	SE00000325	SCREW PTB 3X8(NI)		4				
020	SE09064161	SCREW M4X16		1				
021	SE00000347	FRONT CABINET ASS'Y		1				
022	SE09064161	SCREW M4X16		1				
023	SE00000325	SCREW PTB 3X8(NI)		1				
024	SE09064161	SCREW M4X16		1				
025	SE00000351	FRONT BUMPER		1				
026	SE00000160	SCREW PTHE6X47(CR)		4				
027	SE0338PC5Z	FRONT BAR		2				
028	SE00000355	JACK RUBBER COVER		1				
029	SE00000356	JACK COVER		1				
030	SE21B1110A	ROTARY KNOB RING		1				
031	SE00000482	ROTARY KNOB (BLK)		1				
032	SE09176166	HEX SCREW M6X16		2				
033	SE00000357	BATTERY BUMPER		1				
034	SE00000359	REAR BUMPER		1				
035	SE09176166	HEX SCREW M6X16		2				
036	SE00000362	LOCKER COVER		1				
037	SE00000364	LOCKER FIXER PIN 73.5MM		1				
038	SE00000365	LOCK HINGER		1				
039	SE00000483	BATTERY COVER		1				
040	SE00000369	LOCKER FIXER PIN 64.5MM		1				
041	SE00000325	SCREW PTB 3X8(NI)		2				

Please order the parts with part number.

Print Date 24/10/2023

Model No.DMR108 JOB SITE RADIO

Item	Parts No.	Description	I/C	Qty	New/Old	Opt. 1	Opt. 2	Note
042	SE00000371	BATTERY COVER PACKING		1				
043	SE0307PC5Z	BACK UP BATTERY COVER		1				
044	SE00000466	BATTERY CONTACT(+) 2100RA00700		1				
045	SE00000467	BATTERY CONTACT (-)2100PL00200		1				
046	SE021E9030	+/- BATTERY CONTACT ASS'Y		1				
047	SE00000176	SCREW PTHE6X20(CR)		1				
048	SE00000177	HANDLE HOLDER(R)		1				
049	SE00000179	HANDLE		1				
050	SE00000180	HANDLE HOLDER (L)		1				
051	SE00000176	SCREW PTHE6X20(CR)		1				
052	SE09176166	HEX SCREW M6X16		1				
053	SE00000184	SPRING		2				
054	SE09994007	STEEL BALL		2				
055	SE023PC020	EVA 25X18X5.5		1				
056	SE00000445	SCREW PTB 3X45(NI)		1				
057	SE09994007	STEEL BALL		2				
058	SE00000184	SPRING		2				
059	SE09176166	HEX SCREW M6X16		1				
060	SE00000187	HANDLE SUS-PLATE (R)		1				
061	SE00000445	SCREW PTB 3X45(NI)		1				
062	SE00000192	HANDLE SUS-PLATE(L)		1				
063	SE00000485	REAR CABINET(BLUE) ASS'Y		1				
064	SE00000395	RUBBER ANT 88-108(BLK)		1				
065	SE00000398	ROD ANT PACKING		1				
066	SE00000396	ROD ANT TERMINAL		1				
067	SE00000325	SCREW PTB 3X8(NI)		1				
068	SE023PC020	EVA 25X18X5.5		1				
069	SE00000403	DC RUBBER COVER		1				
070	SE00000404	SCREW PTHE 3X14(CR)		1				
071	SE021PC030	BATTERY COVER LOCKER		1				
072	SE00000406	SPEAKER PACKING		1				
073	SE00000407	SPEAKER(R)		1				
074	SE00000408	SPEAKER PANEL ASS'Y		1				
075	SE024J9040	PACKING		4				
076	SE9076146A	HEX SCREW M6X14		4				
077	SE9076146A	HEX SCREW M6X14		4				
078	SE024J9040	PACKING		4				
079	SE00000408	SPEAKER PANEL ASS'Y		1				
080	SE00000438	SPEAKER (L)		1				
081	SE00000406	SPEAKER PACKING		1				
082	SE00000416	TERMINAL E (B)		1				
083	SE00000325	SCREW PTB 3X8(NI)		2				
084	SE00000200	TERMINAL C		1				
085	SE00000325	SCREW PTB 3X8(NI)		2				

Please order the parts with part number.

Print Date 24/10/2023

Model No.DMR108 JOB SITE RADIO

Item	Parts No.	Description	I/C	Qty	New/Old	Opt. 1	Opt. 2	Note
086	SE00000423	PCB B AUX IN 2 ASS'Y		1				
087	SE00000193	SCREW 3X10		2				
088	SE00000199	SILICON RUBBER WASHER		1				
089	SE00000325	SCREW PTB 3X8(NI)		1				
090	SE00000199	SILICON RUBBER WASHER		1				
091	SE00000325	SCREW PTB 3X8(NI)		1				
092	SE00000422	SPEAKER HOLDER		1				
093	SE00000430	SWITCH KNOB		1				
094	SE00000488	PCB D BATTERY SWITCH ASS'Y		1				
095	SE00000422	SPEAKER HOLDER		1				
096	SE00000325	SCREW PTB 3X8(NI)		2				
097	SE00000433	PCB B DC JACK ASS'Y		1				
098	SE09090011	SCREW 1.7		2				
099	SE00000435	DC JACK HOLDER		1				
100	SE00000473	TERMINAL 10.8V ASSY 011 WA1		1				
101	SE00000325	SCREW PTB 3X8(NI)		1				
102	SE00000195	W/TIES 100MM		3				
103	SE024PC040	PACKING		1				
A01	SE00000101	AC ADAPTER		1				

Please order the parts with part number.

Print Date 24/10/2023