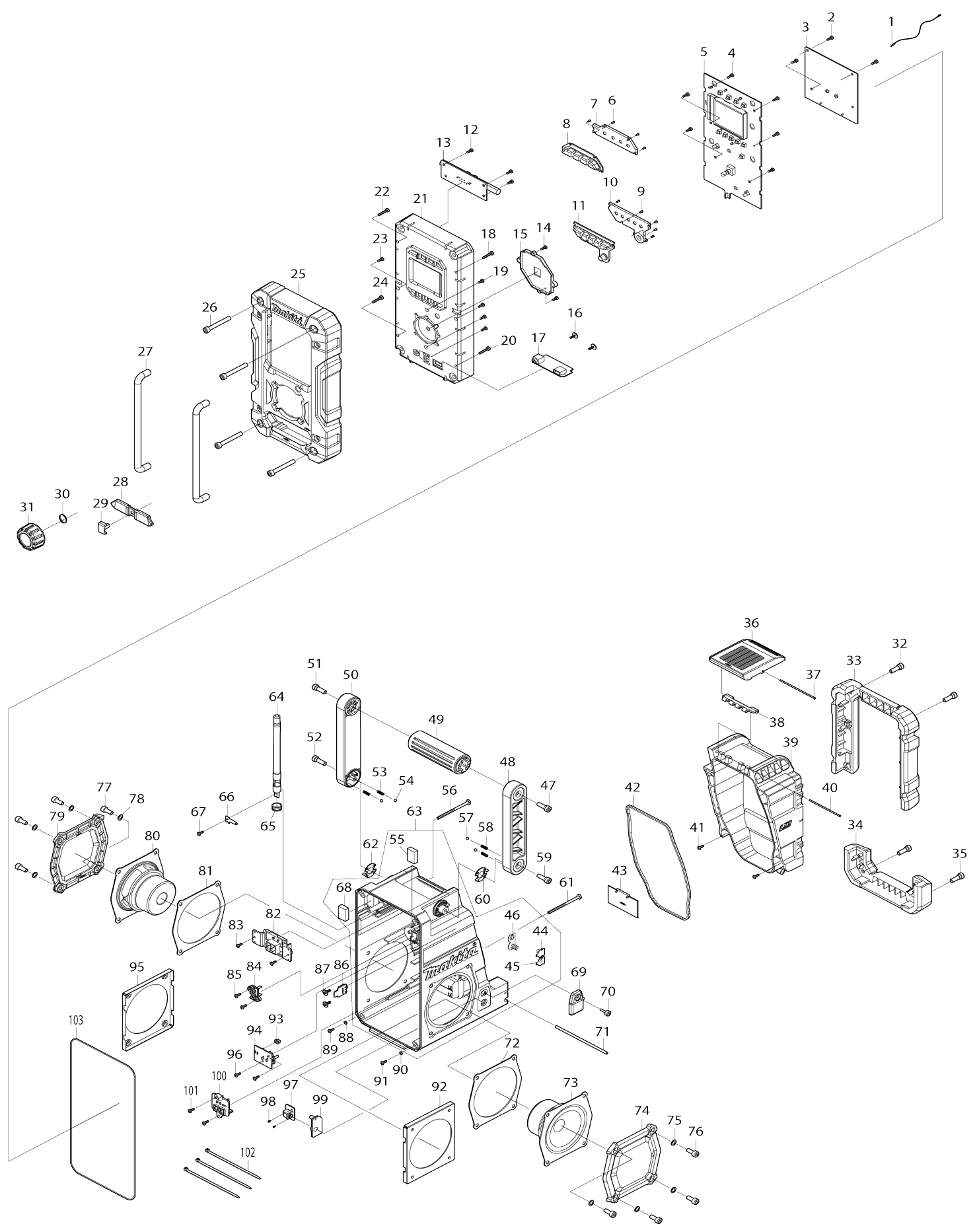


Model No.DMR108AR JOB SITE RADIO



Model No.DMR108AR JOB SITE RADIO

Item No.	Parts No.	Description	Interchangability	Q'ty	New/Old	Note1	Note2
001	SE00000437	WIRE		1			
002	SE00000325	SCREW PTB 3X8(NI)		3			
003-1	SE00000595	PCB A ASS'Y		1	*		
003-2	SE00000822	PCB A ASSEMBLY	O	1			
004	SE00000325	SCREW PTB 3X8(NI)		6			
005	SE00000480	PCB C ASS'Y EUROPE 07CaXA3		1			
006	SE09090011	SCREW 1.7		4			
007	SE00000333	POWER BUTTON HOLDER		1			
008	SE00000334	POWER BUTTON		1			
009	SE09090011	SCREW 1.7		5			
010	SE00000336	PRESET BUTTON HOLDER		1			
011	SE00000337	PRESET BUTTON		1			
012	SE00000325	SCREW PTB 3X8(NI)		3			
013	SE00000339	PCB P ANT BAR ASS'Y		1			
014	SE00000325	SCREW PTB 3X8(NI)		2			
015-1	SE00000656	KNOB LENS HOLDER		1			
016	SE00000193	SCREW 3X10		2			
017	SE00000343	PCB P USB ASS'Y		1			
018	SE09064161	SCREW M4X16		1			
019	SE00000325	SCREW PTB 3X8(NI)		4			
020	SE09064161	SCREW M4X16		1			
021	SE00000347	FRONT CABINET ASS'Y		1			
022	SE09064161	SCREW M4X16		1			
023	SE00000325	SCREW PTB 3X8(NI)		1			
024	SE09064161	SCREW M4X16		1			
025	SE00000610	FRONT BUMPER		1			
026	SE00000160	SCREW PTHE6X47(CR)		4			
027	SE0338PC5Z	FRONT BAR		2			
028	SE00000355	JACK RUBBER COVER		1			
029	SE00000356	JACK COVER		1			
030	SE21B1110A	ROTARY KNOB RING		1			
031	SE00000482	ROTARY KNOB (BLK)		1			
032	SE09176166	HEX SCREW M6X16		2			
033	SE00000611	BATTERY BUMPER		1			
034	SE00000612	REAR BUMPER		1			
035	SE09176166	HEX SCREW M6X16		2			
036	SE00000613	LOCKER COVER		1			
037	SE00000364	LOCKER FIXER PIN 73.5MM		1			
038	SE00000614	LOCK HINGER		1			
039	SE00000615	BATTERY COVER		1			
040	SE00000369	LOCKER FIXER PIN 64.5MM		1			
041	SE00000325	SCREW PTB 3X8(NI)		2			
042	SE00000371	BATTERY COVER PACKING		1			
043	SE00000616	BACK UP BATTERY COVER		1			
044	SE00000466	BATTERY CONTACT(+) 2100RA00700		1			
045	SE00000467	BATTERY CONTACT (-)2100PL00200		1			

046	SE021E9030	+/- BATTERY CONTACT ASS'Y	1		
047	SE00000176	SCREW PTHE6X20(CR)	1		
048	SE00000617	HANDLE HOLDER R(RED)	1		
049	SE00000179	HANDLE	1		
050	SE00000618	HANDLE HOLDER L(RED)	1		
051	SE00000176	SCREW PTHE6X20(CR)	1		
052	SE09176166	HEX SCREW M6X16	1		
053	SE00000184	SPRING	2		
054	SE09994007	STEEL BALL	2		
055	SE023PC020	EVA 25X18X5.5	1		
056	SE00000445	SCREW PTB 3X45(NI)	1		
057	SE09994007	STEEL BALL	2		
058	SE00000184	SPRING	2		
059	SE09176166	HEX SCREW M6X16	1		
060	SE00000187	HANDLE SUS-PLATE (R)	1		
061	SE00000445	SCREW PTB 3X45(NI)	1		
062	SE00000192	HANDLE SUS-PLATE(L)	1		
063	SE00000619	REAR CABINET ASSY (RED)	1		
064	SE00000395	RUBBER ANT 88-108(BLK)	1		
065	SE00000398	ROD ANT PACKING	1		
066	SE00000396	ROD ANT TERMINAL	1		
067	SE00000325	SCREW PTB 3X8(NI)	1		
068	SE023PC020	EVA 25X18X5.5	1		
069	SE00000403	DC RUBBER COVER	1		
070	SE00000404	SCREW PTHE 3X14(CR)	1		
071	SE021PC030	BATTERY COVER LOCKER	1		
072	SE00000406	SPEAKER PACKING	1		
073	SE00000407	SPEAKER(R)	1		
074	SE00000408	SPEAKER PANEL ASS'Y	1		
075	SE024J9040	PACKING	4		
076	SE9076146A	HEX SCREW M6X14	4		
077	SE9076146A	HEX SCREW M6X14	4		
078	SE024J9040	PACKING	4		
079	SE00000408	SPEAKER PANEL ASS'Y	1		
080	SE00000438	SPEAKER (L)	1		
081	SE00000406	SPEAKER PACKING	1		
082	SE00000416	TERMINAL E (B)	1		
083	SE00000325	SCREW PTB 3X8(NI)	2		
084	SE00000200	TERMINAL C	1		
085	SE00000325	SCREW PTB 3X8(NI)	2		
086	SE00000423	PCB B AUX IN 2 ASS'Y	1		
087	SE00000193	SCREW 3X10	2		
088	SE00000199	SILICON RUBBER WASHER	1		
089	SE00000325	SCREW PTB 3X8(NI)	1		
090	SE00000199	SILICON RUBBER WASHER	1		
091	SE00000325	SCREW PTB 3X8(NI)	1		
092	SE00000422	SPEAKER HOLDER	1		
093	SE00000599	SWITCH KNOB (RED)	1		
094	SE00000488	PCB D BATTERY SWITCH ASS'Y	1		
095	SE00000422	SPEAKER HOLDER	1		
096	SE00000325	SCREW PTB 3X8(NI)	2		
097	SE00000433	PCB B DC JACK ASS'Y	1		

098	SE09090011	SCREW 1.7		2			
099	SE00000600	DC JACK HOLDER (RED)		1			
100	SE00000473	TERMINAL 10.8V ASSY 011 WA1		1			
101	SE00000325	SCREW PTB 3X8(NI)		1			
102	SE00000195	W/TIES 100MM		3			
103	SE024PC040	PACKING		1			
A01	SE00000101	AC ADAPTER		1			

Please state Parts No. when your order.

Print Date 24/10/2023