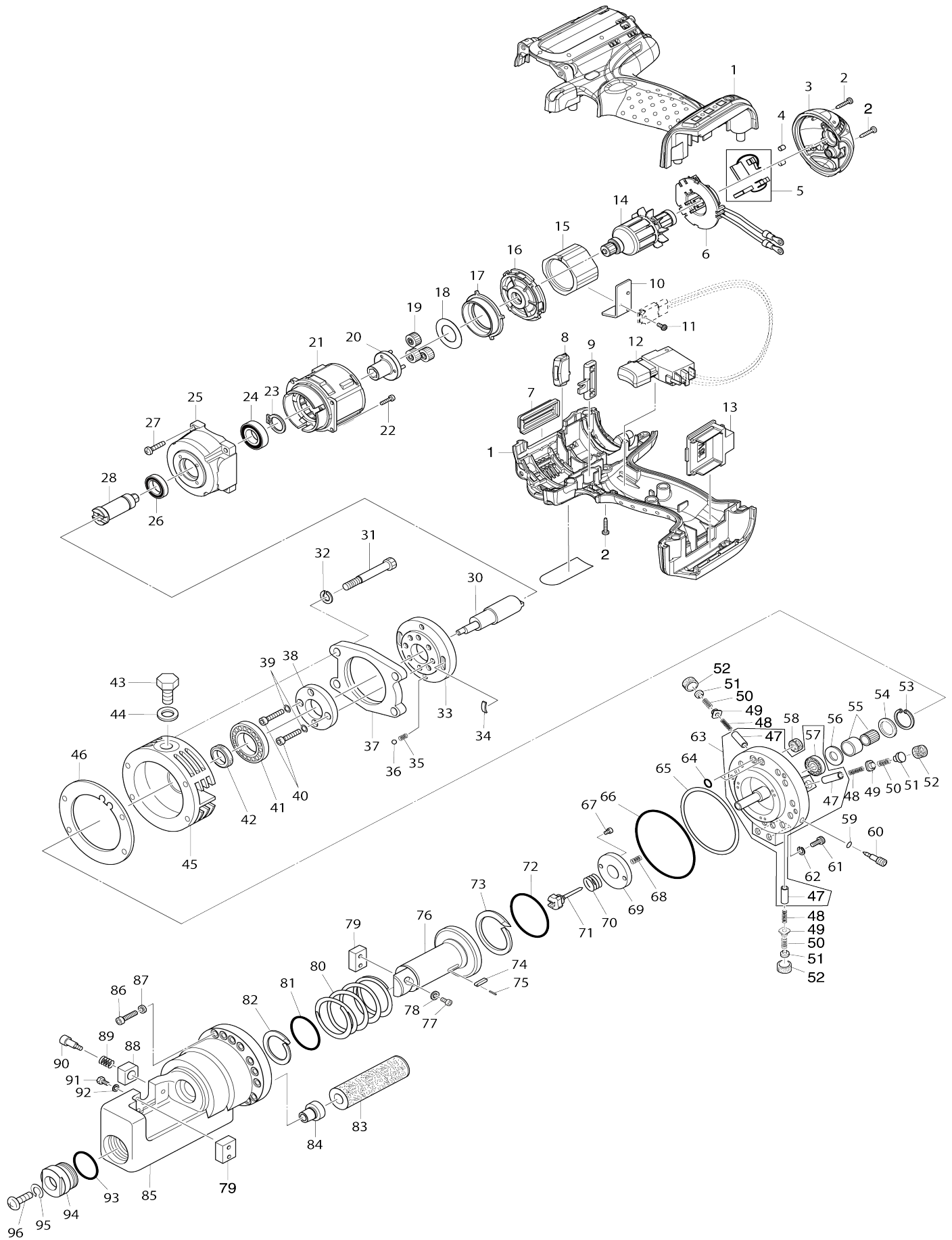


Model No.DSC162 STEEL ROD CUTTER



Model No.DSC162 STEEL ROD CUTTER

Item No.	Parts No.	Description	Interchangability	Q'ty	New/Old	Note1	Note2
001	187142-8	HOUSING SET		1	*		
001-1	183G51-1	HOUSING SET	<	1			
C10	263005-3	RUBBER PIN 6		2			
002	266130-9	TAPPING SCREW BIND PT 3X16		10			
003	419642-3	REAR COVER		1			
004	263032-0	RUBBER PIN 4		2			
005	194427-5	CARBON BRUSH SET CB-440		1	*		
005-1	195021-6	CARBON BRUSH SET CB-440	O	1			
006	638849-4	BRUSH HOLDER COMPLETE		1			
007	451163-9	COVER		1			
008	687216-0	LENS CASE		1			
009	451162-1	LOCK LEVER		1			
010	689145-3	HEATSINK		1			
011	911006-2	PAN HEAD SCREW M3X8		1	*		
011-1	652066-2	+PAN HEAD SCREW M3X9 WITH W	<	1			
012	650653-1	SWITCH TG553FSB-4B		1			
013	644808-8	TERMINAL		1			
014	619165-3	ARMATURE		1			
015	638425-4	YOKE UNIT		1	*		
015-1	632J71-5	YOKE UNIT	<	1			
016	450386-6	MOTOR BRACKET		1			
017	227129-9	INTERNAL GEAR 46		1			
018	267789-5	FLAT WASHER 18		1			
019	154468-3	SPUR GEAR 16 COMPLETE		3			
020	141744-4	CARRIER COMPLETE		1			
021	419252-6	GEAR CASE		1			
022	911017-7	PAN HEAD SCREW M3X12		4			
023	961055-9	RETAINING RING S-15		1			
024	211234-2	BALL BEARING 6902LLB		1			
025	318455-8	GEAR CASE B		1			
026	266045-0	TAPPING SCREW 4X20		4			
027	211233-4	BALL BEARING 6802LLB		1			
028	326213-8	SPINDLE		1			
030	SC03501140	ECCENTRIC SHAFT		1			
031	SC07512110	BOLT HB5X50		4			
032	942101-7	SPRING WASHER 5		4			
033	SC03222700	FLANGE SET PLATE		1			
034	SC04007620	LEAF SPRING		2			
035	SC04007430	POSITION SPRING		2			
036	SC07900010	STEEL BALL S4		2			
037	SC03221200	INTERMEDIATE HOUSING		1			
038	SC03251180	FLANGE		1			
039	SC00000068	FLAT WASHER 4		4			
040	SC07511060	BOLT HB4X22		4			
041	SC00000050	BALL BEARING 6002RU		1			
042	SC00000484	OIL SEAL MSH15257		1			
043	SC00000061	HEX. BOLT 10X15		1			

044	SC00000489	SEAL WASHER		1		
045	SC03212300	BEARING HOUSING		1		
046	SC04601440	LINER B		1		
047	SC03500390	PISTON		3	*	
048	SC04003020	PISTON RETURN SPRING		3		
049	SC00000149	CHECK VALVE		3		
050	SC00000468	SPRING #43449N2		3		
051	SC06505590	O RING S-8		3		
052	SC03500540	METAL PACKING		3		
053	SC00000487	STOP RING H19		1		
054	SC00000467	NEEDLE BEARING HOLDER B T45 422		1		
055	SC00000466	NEEDLE BEARING #RNAF81510		1		
056	SC00000465	NEEDLE BEARING HOLDER A T45 421		1		
057	211007-3	BALL BEARING 625ZZ		1		
058	SC00000020	MAGNET		2		
059	SC06505300	O RING S4		1		
060	SC03501420	RETURN VALVE		1		
061	SC00000097	HEX.SOCKET HEAD BOLT M6X20		2		
062	SC00000066	WASHER 6		2		
063	SC03206510	CYLINDER		1	*	
063-1	SC03206510	CYLINDER	O	1		
D10		INC. 47,57				
064	SC06505010	O RING P6		2		
065	SC06503240	BACK-UP RING G55		1		
066	SC06505180	O RING G55		1		
067	922102-1	HEX. SOCKET HEAD BOLT M4X6		2		
068	SC00000023	RELEASE VALVE SPRING		1		
069	SC00000481	STOPPER PLATE #45423		1		
070	SC00000032	VALVE RETURN SPRING		1		
071	SC00000462	RELEASE VALVE #T45461		1		
072	SC06505280	O RING P46		1		
073	SC06503230	BACK-UP RING P46		1		
074	SC00000480	KEY T45420		1		
075	SC00000070	SPRING PIN 2.5X10		1		
076	SC03113600	CUTTER ROD		1		
077	SC00000059	HEX. SOCKET HEAD BOLT M5X12		2	*	
077-1	SC00000059	HEX. SOCKET HEAD BOLT M5X12	O	2		
078	SC00000067	WASHER 5		2		
079	SC09002470	CUTTER BLADE SET		1		
080	SC04000320	RETURN SPRING FOR CUTTER RO D		1		
081	SC06505320	O RING P26		1		
082	SC06503190	BACK-UP RING P26		1		
083	SC09004930	OIL LEVELER SACK & SPONGE SE T		1	*	
083-1	SC09004930	OIL LEVELER SACK & SPONGE SE T	O	1		
084	SC00000029	BUSH		1		
085	SC03104000	CUTTER HEAD		1		
086	922342-1	HEX. SOCKET HEAD BOLT M6X25		12		
087	SC00000066	WASHER 6		12		

088	SC03503890	STOPPER		1		
089	SC00000469	SPRING #T45470		1		
090	SC03500990	BOLT		1		
091	SC00000098	HEX. SOCKET HEAD BOLT 5X15		2		
092	SC00000067	WASHER 5		2		
093	SC06505310	O RING P22A		1		
094	SC03501400	BUSH HOLDER		1		
095	942201-3	SPRING WASHER 8		1		
096	SC00000034	SPECIAL PAN HEAD SCREW M8X20		1		
A01	SC09009190	PLASTIC CASE SET		1		
A02	SC08107830	CARTON		1		
A03	SC00000106	OIL 35CC		1		
A04	783201-2	HEX. WRENCH 3		1		
A05	783202-0	HEX. WRENCH 4		1		
A06	783203-8	HEX. WRENCH 5		1		
A07	783204-6	HEX. WRENCH 6		1		
A08	781212-1	WRENCH 17-19		1		
A11	SC08001100	PLASTIC CASE MAKITA LOGO LABEL		1		
A12	SC08013320	CARTON NAME PLATE DSC162Z		1		
A13	SC08013240	PLASTIC CASE NAME PLATE DSC162		1		
A15	SC09004010	PRESS FITTING JIG		1	*	

Please state Parts No. when your order.

Print Date 02/23/2024