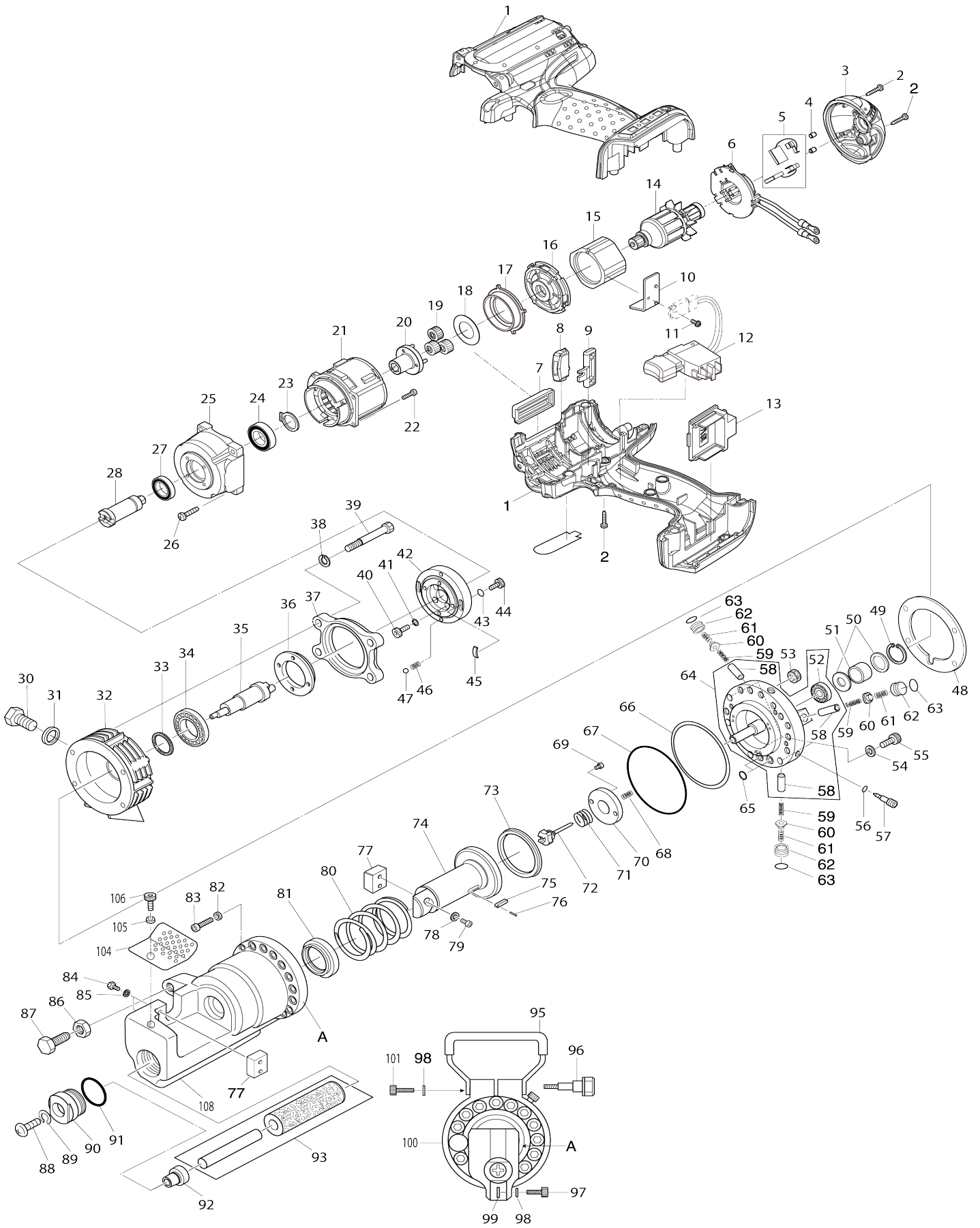


Model No.DSC191 STEEL ROD CUTTER



Model No.DSC191 STEEL ROD CUTTER

Item No.	Parts No.	Description	Interchangability	Q'ty	New/Old	Note1	Note2
001	187142-8	HOUSING SET		1	*		
001-1	183G51-1	HOUSING SET	<	1			
C10	263005-3	RUBBER PIN 6		2			
002	266130-9	TAPPING SCREW BIND PT 3X16		10			
003	419642-3	REAR COVER		1			
004	263032-0	RUBBER PIN 4		2			
005	194427-5	CARBON BRUSH SET CB-440		1			
006	638849-4	BRUSH HOLDER COMPLETE		1			
007	451163-9	COVER		1			
008	687216-0	LENS CASE		1			
009	451162-1	LOCK LEVER		1			
010	689145-3	HEATSINK		1			
011	911006-2	PAN HEAD SCREW M3X8		1	*		
011-1	652066-2	+PAN HEAD SCREW M3X9 WITH W	<	1			
012	650653-1	SWITCH TG553FSB-4B		1			
013	644808-8	TERMINAL		1			
014	619165-3	ARMATURE		1			
015	638425-4	YOKE UNIT		1	*		
015-1	632J71-5	YOKE UNIT	<	1			
016	450386-6	MOTOR BRACKET		1			
017	227129-9	INTERNAL GEAR 46		1			
018	267789-5	FLAT WASHER 18		1			
019	154468-3	SPUR GEAR 16 COMPLETE		3			
020	141744-4	CARRIER COMPLETE		1			
021	419252-6	GEAR CASE		1			
022	911017-7	PAN HEAD SCREW M3X12		4			
023	961055-9	RETAINING RING S-15		1			
024	211234-2	BALL BEARING 6902LLB		1			
025	318455-8	GEAR CASE B		1			
026	266045-0	TAPPING SCREW 4X20		4			
027	211233-4	BALL BEARING 6802LLB		1			
028	326213-8	SPINDLE		1			
030	SC00000061	HEX. BOLT 10X15		1			
031	SC00000489	SEAL WASHER		1			
032	SC03213510	PUMP CASE		1			
033	SC00000054	OIL SEAL		1			
034	SC00000050	BALL BEARING 6002RU		1			
035	SC03501390	ECCENTRIC SHAFT		1			
036	SC03251400	THRUST FIXING FLANGE		1			
037	SC03221700	MOTOR FLANGE		1			
038	SC00000066	WASHER 6		4			
039	922382-9	HEX. SOCKET HEAD BOLT M6X60		4			
040	SC07511020	BOLT HB4X15		4			
041	SC00000068	FLAT WASHER 4		4			
042	SC03222300	MOTOR MOUNTING FLANGE		1			
043	SC00000068	FLAT WASHER 4		4			
044	SC07511020	BOLT HB4X15		4			

045	SC04007620	LEAF SPRING		2		
046	SC04007430	POSITION SPRING		2		
047	SC07900010	STEEL BALL S4		2		
048	SC04601470	LINER B		1		
049	SC07411020	RETAINING RING RTW-26		1		
050	SC00000019	NEEDLE BEARING SUPPORTER		2		
051	SC00000048	NEEDLE BEARING		1		
052	SC00000049	BALL BEARING 608		1		
053	SC00000020	MAGNET		3		
054	941201-0	FLAT WASHER 8		3		
055	SC00000376	HEX. SOCKET HEAD BOLT 8X20		3		
056	SC06505300	O RING S4		1		
057	SC03501420	RETURN VALVE		1		
058	SC00000015	PISTON		3	*	
059	SC00000022	PISTON RETURN SPRING		3		
060	SC00000464	CHECK VALVE #T43445		3		
061	SC00000021	CHECK VALVE SPRING		3		
062	SC03500540	METAL PACKING		3		
063	SC06505590	O RING S-8		3		
064	SC03206140	CYLINDER		1	*	
064-1	SC03206140	CYLINDER	O	1		
D10		INC. 52,58				
065	SC06505010	O RING P6		2		
066	SC06503260	BACK UP RING G70		1		
067	SC06505350	O RING FOR CYLINDER G70		1		
068	SC00000023	RELEASE VALVE SPRING		1		
069	SC00000060	HEX. SOCKET HEAD BOLT 4X6		2		
070	SC00000481	STOPPER PLATE #45423		1		
071	SC00000032	VALVE RETURN SPRING		1		
072	SC03500310	RELEASE VALVE		1		
073	SC00000096	ROD PACKING		1		
074	SC03112300	CUTTER ROD		1		
075	SC03700020	KEY		1		
076	SC00000070	SPRING PIN 2.5X10		1		
077	SC09002030	SP BLADE SET (PC)		1		
078	SC00000067	WASHER 5		2		
079	SC00000098	HEX. SOCKET HEAD BOLT 5X15		2		
080	SC04000050	RETURN SPRING FOR CUTTER ROD		1		
081	SC06503510	DUST SEAL		1		
082	SC07620040	WASHER HW8		11		
083	922441-9	HEX. SOCKET HEAD BOLT M8X25		11		
084	SC00000057	HEX. SOCKET HEAD BOLT 6X18		2		
085	SC00000066	WASHER 6		2		
086	931601-2	HEX. NUT M12		1		
087	SC00000134	HOLD BOLT		1		
088	SC00000034	SPECIAL PAN HEAD SCREW M8X20		1		
089	SC00000065	SPRING WASHER 8		1		
090	SC03507010	BUSHING HOLDER		1		
091	SC06505320	O RING P26		1		
092	SC03507000	BUSHING		1		

093	SC09004910	OIL LEVELER SACK		1		
095	SC03302640	HANDGRIP		1		
096	SC09030630	SCREW SET		1		
097	SC07513030	BOLT HB6X18		1		
098	SC07610040	WASHER SW6		2		
099	SC03302650	SPACER		1		
100	SC03223430	HANDGRIP RING		1		
101	SC07513090	HEX. SOCKET HEAD BOLT M6X22		1		
104	SC03505790	PROTECTOR		1		
105	SC07610030	SPRING WASHER 5		1	*	
105-1	SC07610030	SPRING WASHER 5	O	1		
106	SC07512010	HEX.SOCKET HEAD BOLT M5X10		1	*	
106-1	SC07512010	HEX.SOCKET HEAD BOLT M5X10	O	1		
108	SC03103210	BAR HOLDER		1		
A03	783201-2	HEX. WRENCH 3		1		
A04	783202-0	HEX. WRENCH 4		1		
A05	783203-8	HEX. WRENCH 5		1		
A06	783204-6	HEX. WRENCH 6		1		
A07	781212-1	WRENCH 17-19		1		
A08	SC00000142	HYDRAULIC OIL 150CC		1		
A09	SC09009190	PLASTIC CASE SET		1		
A10	SC08001100	PLASTIC CASE MAKITA LOGO LABEL		1		
A11	SC08013360	DSC191Z CARTON NAME PLATE		1		
A12	SC08013280	DSC191Z PLASTIC CASE NAMEPLATE		1		
A14	SC09004030	PRESS FITTING JIG		1	*	

Please state Parts No. when your order.

Print Date 02/23/2024