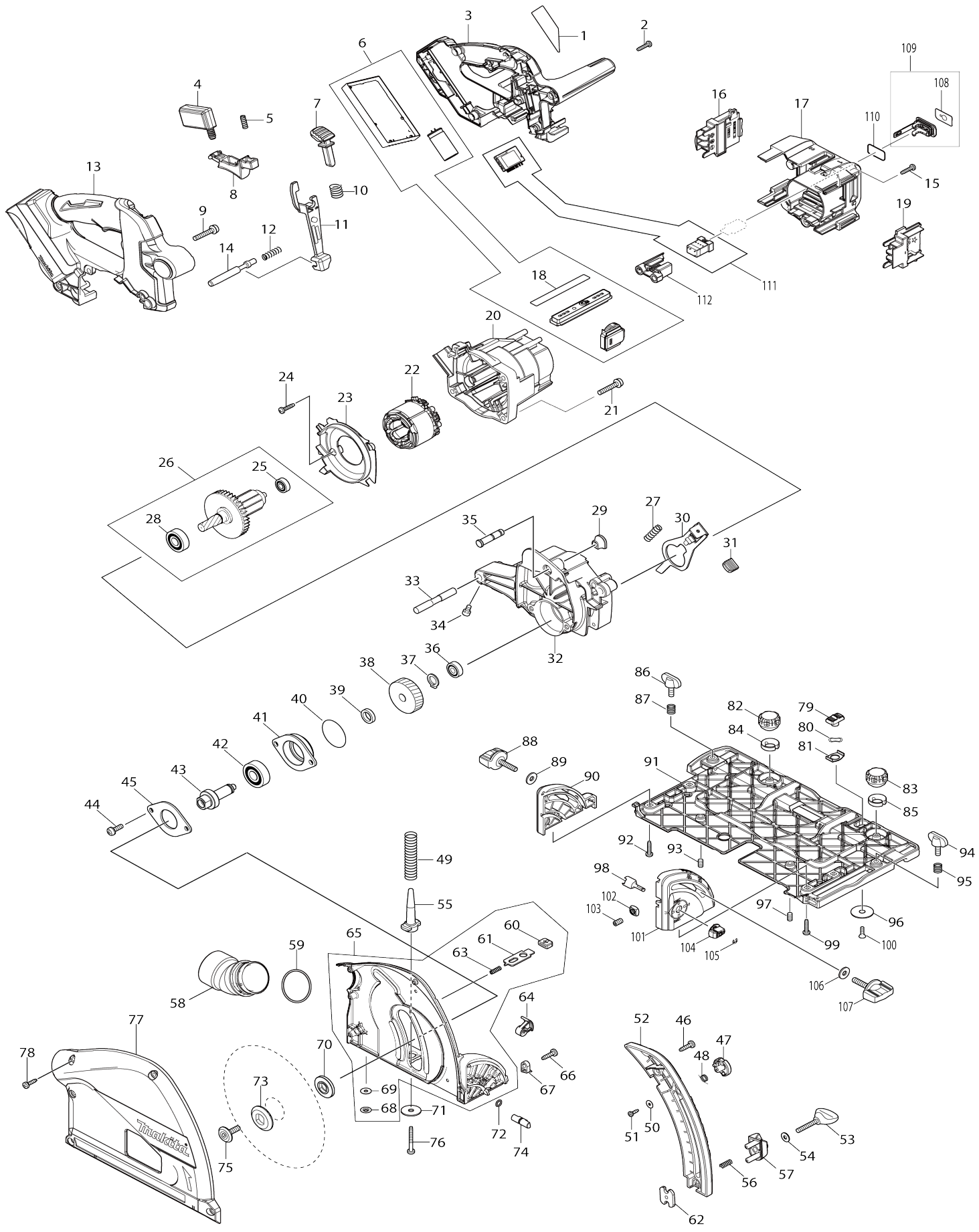


Model No.DSP601 165MM CORDLESS PLUNGE CUT SAW



Model No.DSP601 165MM CORDLESS PLUNGE CUT SAW

Item No.	Parts No.	Description	Interc hang eabilit y	Q'ty	New/ Old	Note1	Note2
001	853V15-6	DSP601 NAME PLATE		1			
002	265995-6	TAPPING SCREW 4X18		8			
003	183H79-5	HANDLE REAR COVER SET		1			
C10	263005-3	RUBBER PIN 6		4			
D10		INC. 13,17					
004	651083-9	SWITCH C3XA-1PSPM		1			
005	234173-9	COMPRESSION SPRING 4		1			
006	135915-3	CONTROLLER ASSY		1	*		
C10	620691-7	SUB CONTROLLER		1	*		
D10		INC. 18					
006-1	135974-7	CONTROLLER ASSY	<	1	*		
C10	620691-7	SUB CONTROLLER		1	*		
D10		INC. 18					
006-2	136857-4	CONTROLLER ASSY	S	1			
C10	620691-7	SUB CONTROLLER		1			
D10		INC. 18					
007	419629-5	LOCK OFF BUTTON		1			
008	457748-9	SWITCH LEVER		1			
009	911253-5	PAN HEAD SCREW M5X30		2	*		
009-1	911253-5	PAN HEAD SCREW M5X30	O	2			
010	233089-5	COMPRESSION SPRING 12		1			
011	457749-7	LOCK PLATE		1			
012	233267-7	COMPRESSION SPRING 7		1			
013	183H79-5	HANDLE REAR COVER SET		1			
C10	263005-3	RUBBER PIN 6		4			
D10		INC. 3,17					
014	324709-3	LOCK PIN 8		1			
015	265995-6	TAPPING SCREW 4X18		5			
016	643874-2	TERMINAL		1			
017	183H79-5	HANDLE REAR COVER SET		1			
C10	263005-3	RUBBER PIN 6		4			
D10		INC. 3,13					
018	813D03-7	INDICATION LABEL		1			
019	643874-2	TERMINAL		1			
020	457750-2	MOTOR HOUSING		1			
021	911253-5	PAN HEAD SCREW M5X30		4			
022	629275-8	STATOR		1	*		
022-1	629B69-3	STATOR	S	1			
023	457751-0	BAFFLE PLATE		1			
024	265995-6	TAPPING SCREW 4X18		2			
025	210022-4	BALL BEARING 626DDW		1			
026	519448-0	ROTOR ASSY		1	*		
D10		INC. 25,28					
026-1	519448-0	ROTOR ASSY	O	1			
D10		INC. 25,28					
027	233084-5	COMPRESSION SPRING 6		1			
028	211131-2	BALL BEARING 6001DDW		1			

029	286040-4	CAP		1		
030	345742-2	SHAFT LOCK		1		
031	286039-9	CAP		1		
032	144586-5	GEAR HOUSING COMPLETE		1		
C10	263002-9	RUBBER PIN 4		1		
033	326960-1	PIN 8		1	*	
033-1	324716-6	PIN 8	<	1	*	
033-2	327B66-0	PIN 8	O	1		
034	265907-9	HEX. SOCKET HEAD BOLT M5X10		1		
035	324708-5	STOPPER PIN 8		1		
036	211021-9	BALL BEARING 607LLB		1		
037	961052-5	RETAINING RING (EXT) S-12		1		
038	221548-1	HELICAL GEAR 41		1		
039	257010-0	RING 12		1		
040	213512-6	O RING 39		1		
041	318088-9	BEARING BOX		1		
042	211129-9	BALL BEARING 6201DDW		1		
043	324707-7	SPINDLE		1		
044	911221-8	PAN HEAD SCREW M5X16		2		
045	285689-7	BEARING RETAINER 55		1		
046	266034-5	TAPPING SCREW CT 4X16		2		
047	419630-0	LOCK LEVER		1		
048	231665-9	TORSION SPRING 7		1		
049	233479-2	COMPRESSION SPRING 11		1		
050	253821-1	FLAT WASHER 3		1		
051	266007-8	TAPPING SCREW BIND PT 3X10		1		
052	457756-0	DEPTH GUIDE		1		
053	251867-1	THUMB SCREW M5X30		1		
054	941101-4	FLAT WASHER 5		1	*	
054-1	253414-4	FLAT WASHER 5	O	1		
055	419624-5	SPRING HOLDER		1		
056	231372-4	COMPRESSION SPRING 5		1		
057	419623-7	STOPPER BLOCK		1		
058	457752-8	DUST NOZZLE		1		
059	213460-9	O RING 35		1		
060	286041-2	CAP 14		2		
061	345747-2	SPACER PLATE		2		
062	345744-8	NUT PLATE		1		
063	233025-1	COMPRESSION SPRING 2		2		
064	144867-7	LEVER 20 COMPLETE		1		
C10	263002-9	RUBBER PIN 4		1		
065	144868-5	BLADE CASE COMPLETE		1	*	
D10		INC. 60,61,63,68,69				
065-1	140D56-6	BLADE CASE COMPLETE	O	1		
D10		INC. 60,61,63,68,69				
066	266034-5	TAPPING SCREW CT 4X16		1		
067	419632-6	POSITION PLATE		1		
068	259008-3	PUSH NUT 4		2		
069	253874-0	FLAT WASHER 4		2	*	
069-1	347392-9	PLATE	O	2		
070	224593-5	INNER FLANGE 35		1		
071	253010-8	FLAT WASHER 6		1		

072	213021-5	O RING 5		1		
073	224409-4	OUTER FLANGE 35		1		
074	324710-8	PIN 8		1		
075	266403-0	HEX. SOCKET HEAD BOLT M6		1		
076	266053-1	TAPPING SCREW 4X35		1		
077	319605-8	BLADE CASE COVER		1	*	
077-1	319702-0	BLADE CASE COVER	S	1		
078	266034-5	TAPPING SCREW CT 4X16		5		
079	458092-7	SLIDE LEVER		1		
080	253932-2	WAVE WASHER 10		1		
081	345977-5	PLATE		1		
082	265775-0	THUMB SCREW M4X3		1		
083	265775-0	THUMB SCREW M4X3		1		
084	419627-9	HOLDER		1		
085	419627-9	HOLDER		1		
086	265701-9	THUMB SCREW M6X14		1		
087	231316-4	COMPRESSION SPRING 7		1	*	
087-1	231240-1	COMPRESSION SPRING 7	O	1		
088	265776-8	THUMB SCREW M6X26		1		
089	253111-2	FLAT WASHER 6		1		
090	419596-4	REAR ANGULAR GUIDE		1		
091	319604-0	BASE		1	*	
091-1	312B95-6	BASE	S	1		
092	265995-6	TAPPING SCREW 4X18		2		
093	266225-8	H.S.SET SCREW(FLAT POINT)M6X8		1		
094	265701-9	THUMB SCREW M6X14		1		
095	231316-4	COMPRESSION SPRING 7		1	*	
095-1	231240-1	COMPRESSION SPRING 7	O	1		
096	345748-0	LOCK WASHER		1		
097	266225-8	H.S.SET SCREW(FLAT POINT)M6X8		1		
098	324731-0	STOPPER PIN		1		
099	265995-6	TAPPING SCREW 4X18		2		
100	912112-6	COUNTERSUNK HEAD SCREW M4X10		1		
101	419595-6	FRONT ANGULAR GUIDE		1	*	
101-1	413A11-6	FRONT ANGULAR GUIDE	S	1		
102	252157-5	SQUARE NUT M6		1		
103	266225-8	H.S.SET SCREW(FLAT POINT)M6X8		1		
104	457963-5	DIAL 22		1		
105	961017-7	STOP RING E-3		1		
106	253111-2	FLAT WASHER 6		1		
107	265776-8	THUMB SCREW M6X26		1		
108	813T75-8	CAP LABEL		1	*	
108-1	818H48-4	CAP LABEL	<	1		
109	183H92-3	CAP SET		1	*	
D10		INC. 108				
109-1	183J85-2	CAP SET	O	1	*	
D10		INC. 108				
109-2	140G30-2	CAP COMPLETE	<	1		

D10		INC. 108				
110	213275-4	O RING 18		1	*	
110-1	213218-6	O RING 16	<	1		
111	620753-1	SUB CONTROLLER		1		
112	458038-3	HOLDER		1		
113	213045-1	O-RING 6	S	2	*	
114	620L68-8	CONTROLLER B	S	1		
115	652119-7	PAN HEAD SCREW M2X6	S	6		
A01	B-57364	TCT BLADE165X20X56TWOOD/M DF DB		1	*	
A01-1	B-57364	TCT BLADE165X20X56TWOOD/M DF DB	O	1	*	
A01-2	B-57320	TCT BLADE165X20X56TWOOD/M DF DB	X	1		
A02	783203-8	HEX. WRENCH 5		1		
A03	198897-0	WIRELESS UNIT SET		1	*	
A03-1	198900-7	WIRELESS UNIT SET		1	*	
A03-2	198900-7	WIRELESS UNIT SET	<	1	*	
A03-3	198900-7	WIRELESS UNIT SET	<	1		
A04	821552-6	CONNECTOR PLASTIC CASE (TYP E4)		1		
C10	453974-8	LATCH		4		
A05	816C31-5	DSP601ZJU PLASTIC CASE LABEL		2	*	
A05-1	816C31-5	DSP601ZJU PLASTIC CASE LABEL	O	2		
A06	816C30-7	DSP601ZJU INDICATION LABEL		1	*	
A06-1	816C30-7	DSP601ZJU INDICATION LABEL	O	1		
A07	839290-6	INNER TRAY		1		
F03	194367-7	GUIDE RAIL 3000 SET		1		
F04	194368-5	GUIDE RAIL 1400 SET		1		
F06	194416-0	SHEET 10000 SET		1		
F07	194417-8	RUBBER SHEET 10000 SET		1		
F08	194418-6	POSITION SHEET 1400 SET		1		
F10	194910-2	POSITION SHEET 1900 SET		1		
F12	194925-9	GUIDE RAIL 1900 SET		1		
F14	195546-0	FRONT CUFF 24 SET		1		
F15	196664-7	BEVEL GUIDE SET		1		
F19	199140-0	GUIDE RAIL 1000 SET		1		
F20	199141-8	GUIDE RAIL 1500 SET		1		
F28	1913K7-3	PARALLEL GUIDE SET(MM)		1		
109	183J85-2	CAP SET		1	*	
109-1	140G30-2	CAP COMPLETE	<	1		
110	213218-6	O RING 16		1		
A05-1	818A03-4	DSP601ZJ PLASTIC CASE LABEL		2		
A06-1	818A02-6	DSP601ZJ INDICATION LABEL		1		

Please state Parts No. when your order.

Print Date 02/19/2024