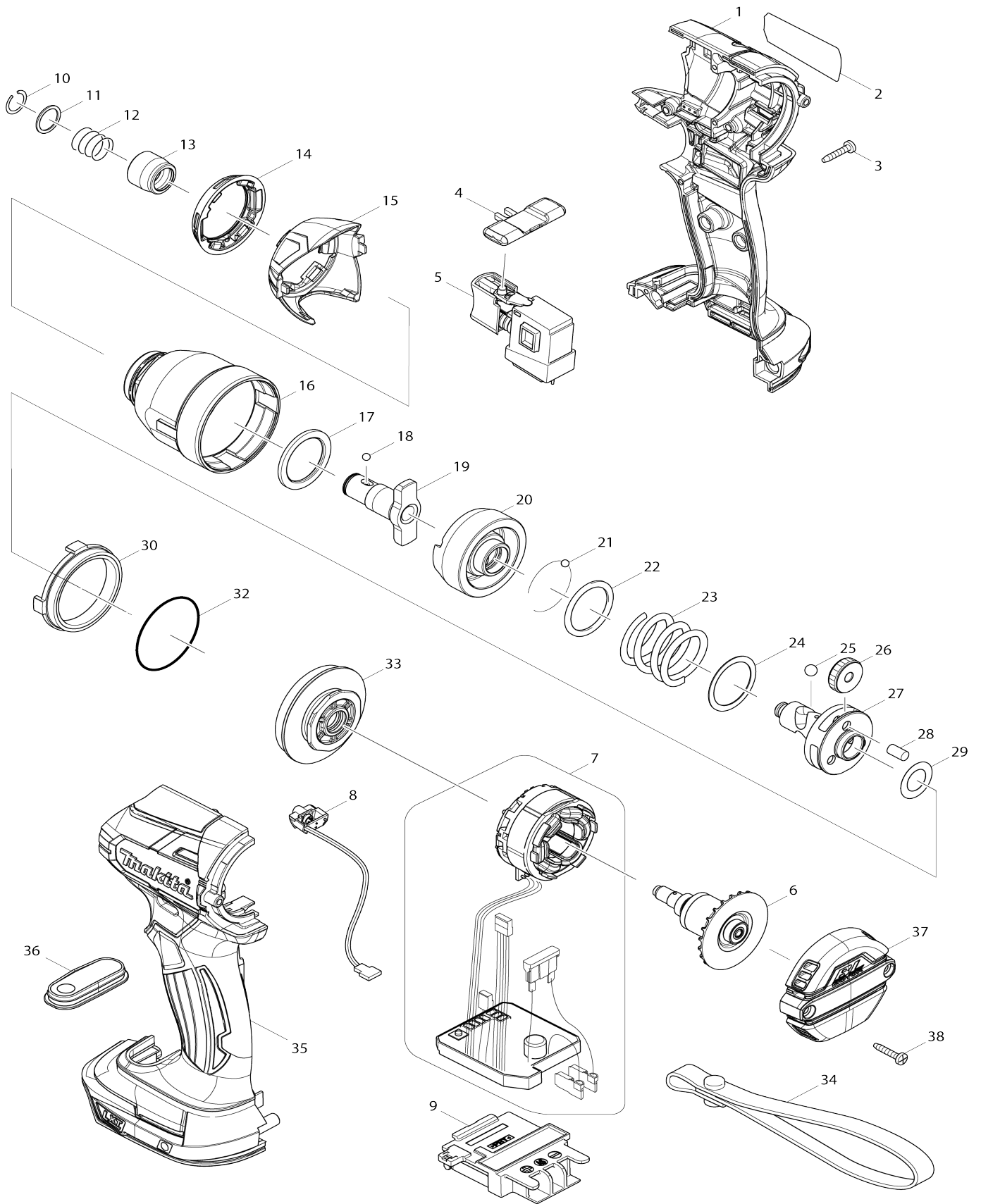


Model No.DTD148 CORDLESS IMPACT DRIVER



Model No.DTD148 CORDLESS IMPACT DRIVER

Item No.	Parts No.	Description	Interchangability	Q'ty	New/Old	Note1	Note2
001	187973-5	HOUSING SET		1			
C10	263005-3	RUBBER PIN 6		2			
D10		INC. 35					
002	850D20-6	DTD148 NAME PLATE		1			
003	266130-9	TAPPING SCREW BIND PT 3X16		8			
004	455053-8	F/R CHANGE LEVER		1			
005	141448-8	SWITCH COMPLETE		1			
006	619343-5	ROTOR		1			
007	632D61-2	STATOR UNIT		1	*		
007-1	629369-9	STATOR UNIT	<	1			
008	620294-7	LED CIRCUIT		1			
009	643860-3	TERMINAL		1			
010	231951-8	RING SPRING 11		1			
011	267085-1	FLAT WASHER 12		1			
012	233005-7	COMPRESSION SPRING 13		1			
013	326072-0	BIT SLEEVE		1			
014	424627-6	BUMPER		1			
015	455051-2	HAMMER CASE COVER		1			
016	142516-0	HAMMER CASE COMPLETE		1	*		
016-1	144788-3	HAMMER CASE COMPLETE	<	1			
017	261155-8	NYLON WASHER 24		1			
018	216001-0	STEEL BALL 3.5		2			
019	326431-8	ANVIL M		1	*		
019-1	326508-9	ANVIL M	<	1			
020	326412-2	HAMMER		1			
021	216001-0	STEEL BALL 3.5		24			
022	267175-0	FLAT WASHER 24		1			
023	234331-7	COMPRESSION SPRING 24		1			
024	253090-4	FLAT WASHER 24		1			
025	216011-7	STEEL BALL 5.6		2			
026	227338-0	SPUR GEAR 22		3			
027	326411-4	SPINDLE		1			
028	268311-1	PIN 5		3			
029	253314-8	THIN WASHER 15		1			
030	227351-8	INTERNAL GEAR 51		1			
032	213507-9	O RING 40		1			
033	142517-8	BEARING BOX COMPLETE		1			
035	187973-5	HOUSING SET		1			
C10	263005-3	RUBBER PIN 6		2			
D10		INC. 1					
036	141583-2	SWITCH PLATE COMPLETE		1	*		
036-1	141583-2	SWITCH PLATE COMPLETE	<	1			
037	455052-0	REAR COVER		1			
038	266130-9	TAPPING SCREW BIND PT 3X16		2			
A01	266622-8	+ TRUSS HEAD SCREW M4X12		1			
A02	346317-0	HOOK		1			
F08	194281-7	STOPPER SET (W/BITS)		1			

F10	194649-7	BATTERY PROTECTOR		1		
C10	251314-2	+ SCREW M4X12		2		
F11-3	197606-4	BATTERY BL1830B SET (2PIECES)	O	1		
F12	195779-7	HOOK SET		1		
F13-2	197043-2	TOOL HANGER SET	O	1		
F14-3	197600-6	BATTERY BL1830B SET	O	1		
F15-4	197599-5	BATTERY BL1830B SET	O	1		
F16-3	197267-0	BATTERY BL1840B SET	O	1		
F17-3	197267-0	BATTERY BL1840B SET	O	1		
F18-3	197265-4	BATTERY BL1840B SET	O	1		
F19-3	197265-4	BATTERY BL1840B SET	O	1		
F20-3	197273-5	BATTERY BL1840B SET(2PIECES)	O	1		
F50	195798-3	BATTERY PROTECTOR SET		1		

Please state Parts No. when your order.

Print Date 16/10/2023