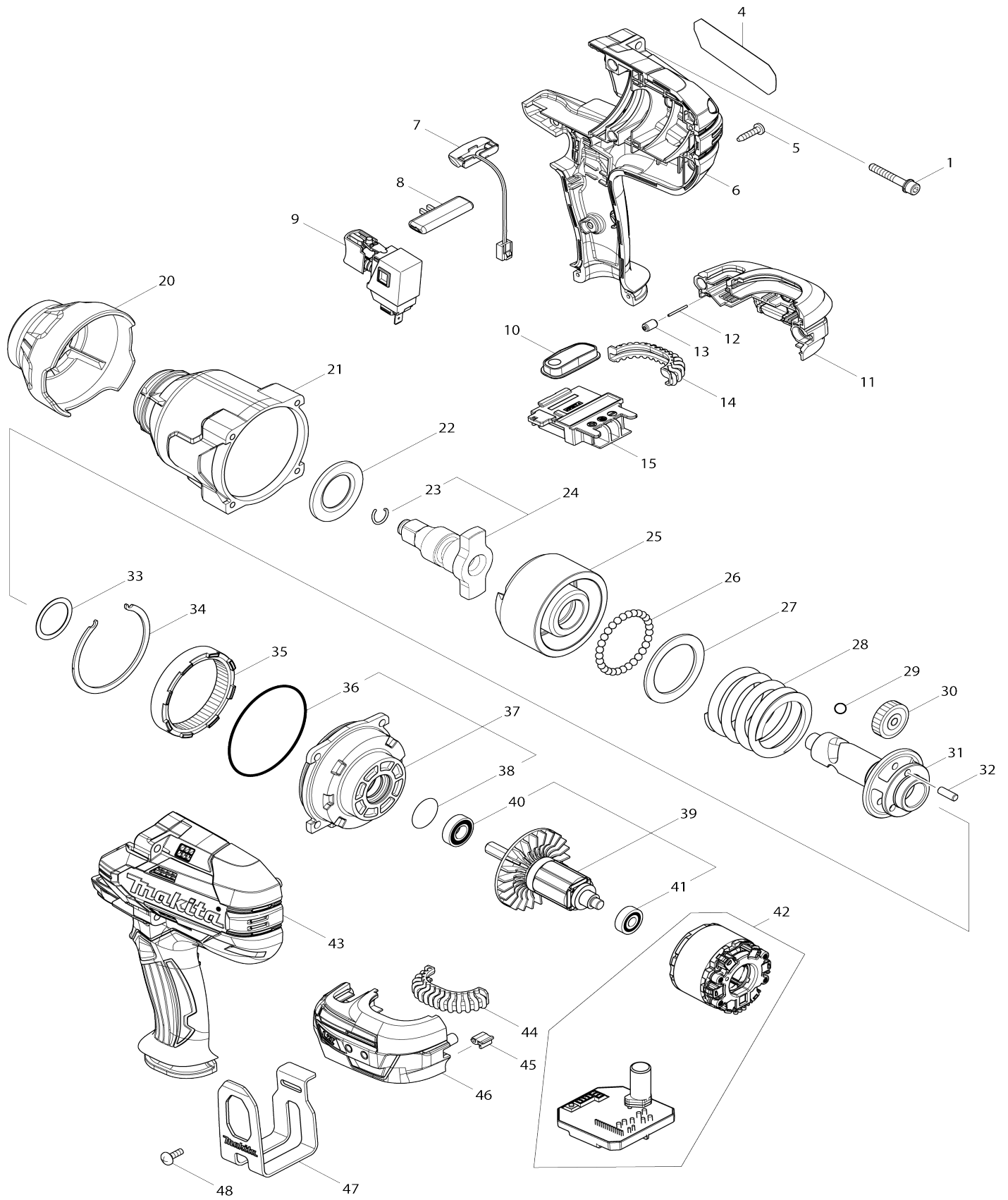


Model No.DTW1002 CORDLESS IMPACT WRENCH



Model No.DTW1002 CORDLESS IMPACT WRENCH

Item No.	Parts No.	Description	Interchangability	Q'ty	New/Old	Note1	Note2
001	251476-6	H.S.H.BOLT M5X35 WITH WR		4	*		
001-1	265D13-4	H.S.H.BOLT M5X35 WITH WRM	<	4			
004	851K57-8	DTW1002 NAME PLATE		1	*		
004-1	857K86-9	DTW1002 NAME PLATE	S	1			
005	266326-2	TAPPING SCREW 4X18		9	*		
005-1	265995-6	TAPPING SCREW 4X18	O	9			
006	183C08-8	HOUSING SET		1	*		
D10		INC. 43					
006-1	183H36-3	HOUSING SET	O	1	*		
D10		INC. 43					
006-2	1830A6-1	HOUSING SET	<	1			
D10		INC. 43					
007	620351-1	LED CIRCUIT		1			
008	456268-0	F/R CHANGE LEVER		1			
009	143416-7	SWITCH COMPLETE		1			
010	143417-5	SWITCH PLATE COMPLETE		1			
011	183C12-7	BATTERY HOUSING SET		1			
C10	263005-3	RUBBER PIN 6		2			
D10		INC. 46					
012	268284-8	PIN 1.5		1			
013	263036-2	RUBBER PIN 5		1			
014	424773-5	CUSHION RUBBER		1	*		
014-1	422A56-3	CUSHION RUBBER	<	1			
015	643899-6	TERMINAL		1			
020	424775-1	BUMPER		1	*		
020-1	424978-7	BUMPER	<	1			
021	143411-7	HAMMER CASE COMPLETE		1	*		
021-1	144473-8	HAMMER CASE COMPLETE	S	1			
022	346948-5	WASHER 25		1			
023	231907-1	RING SPRING 10		1	*		
023-1	232323-0	RING SPRING 10	<	1			
024	135717-7	ANVIL W ASS'Y		1	*		
D10		INC. 23					
024-1	135717-7	ANVIL W ASS'Y	<	1	*		
D10		INC. 23					
024-2	135804-2	ANVIL W ASS'Y	<	1			
D10		INC. 23					
025	326613-2	HAMMER		1			
026	216002-8	STEEL BALL 4.8		29			
027	267493-6	FLAT WASHER 38		1			
028	234383-8	COMPRESSION SPRING 38		1			
029	216009-4	STEEL BALL 7.1		2			
030	227391-6	SPUR GEAR 24		3	*		
030-1	226879-3	SPUR GEAR 24	<	3	*		
030-2	226880-8	SPUR GEAR 24	O	3			
031	326611-6	SPINDLE		1			
032	268079-9	PIN 5		3			

033	267494-4	FLAT WASHER 25		1	*		
033-1	267127-1	FLAT WASHER 26	O	1			
034	346947-7	RETAINER		1			
035	227392-4	INTERNAL SPUR GEAR 54		1			
036	213720-9	O RING 67		1			
037	135718-5	INTERNAL GEAR CASE ASS'Y		1			
D10		INC. 36,38					
038	213961-7	O RING 22		1			
039	519384-0	ROTOR ASS'Y		1	*		
D10		INC. 40,41					
A02	194204-5	BATTERY BL1830 SET		2	*		
039-1	519593-1	ROTOR ASS'Y	O	1	*		
D10		INC. 40,41					
039-2	519592-3	ROTOR ASSY	O	1			
D10		INC. 40,41					
040	210069-8	BALL BEARING 6900DDW		1			
041	211022-7	BALL BEARING 607ZZ		1			
042	629170-2	STATOR COMPLETE		1	*		
042-1	629330-6	STATOR COMPLETE	<	1	*		
042-2	629B59-6	STATOR	S	1			
043	183C08-8	HOUSING SET		1	*		
D10		INC. 6					
043-1	183H36-3	HOUSING SET	O	1	*		
D10		INC. 6					
043-2	1830A6-1	HOUSING SET	<	1			
D10		INC. 6					
044	424773-5	CUSHION RUBBER		1	*		
044-1	422A56-3	CUSHION RUBBER	<	1			
045	424517-3	CUSHION		1			
046	183C12-7	BATTERY HOUSING SET		1			
C10	263005-3	RUBBER PIN 6		2			
D10		INC. 11					
047	346949-3	HOOK		1			
048	251314-2	+ SCREW M4X12		2			
049	857K87-7	DTW1002 SERIAL NO. LABEL	S	1			
050	620K29-2	CONTROLLER	S	1			
051	652119-7	PAN HEAD SCREW M2X6	S	6			
F34-2	197606-4	BATTERY BL1830B SET (2PIECES)	O	1	*		
F35-2	197600-6	BATTERY BL1830B SET	O	1			
F36-3	197599-5	BATTERY BL1830B SET	O	1			
F40	191G67-2	EXTENSION HANDLE SET		1			
A01	***DC18RC	DC18RC FAST CHARGER		1			
A02	197265-4	BATTERY BL1840B SET		2	*		
A02-1	197265-4	BATTERY BL1840B SET	O	2			
A03	450128-8	BATTERY COVER		1			
A04	821551-8	CONNECTOR PLASTIC CASE (TYP E3)		1			
C10	453974-8	LATCH		4			
A05	837645-9	INNER TRAY		1			
A06	808B76-1	DTW1002RMJ INDICATION LABEL		1	*		
A06-1	817B48-5	DTW1002RMJ INDICATION LABEL	<	1			

		L					
A07	808B77-9	DTW1002RMJ PLASTIC CASE LABEL		2	*		
A07-1	8018M7-6	DTW1002RMJ PLASTIC CASE LABEL	O	2			
A02	194204-5	BATTERY BL1830 SET		2	*		
A02-1	197600-6	BATTERY BL1830B SET	<	2	*		
A02-2	197600-6	BATTERY BL1830B SET	O	2			
A06	808B78-7	DTW1002RFJ INDICATION LABEL		1	*		
A06-1	817B51-6	DTW1002RFJ INDICATION LABEL	<	1			
A07	808B79-5	DTW1002RFJ PLASTIC CASE LABEL		2	*		
A07-1	8018M8-4	DTW1002RFJ PLASTIC CASE LABEL	O	2			
A02	197280-8	BATTERY BL1850B SET		2	*		
A02-1	197280-8	BATTERY BL1850B SET	O	2			
A06	808B80-0	DTW1002RTJ INDICATION LABEL		1	*		
A06-1	817B54-0	DTW1002RTJ INDICATION LABEL	<	1			
A07	808B81-8	DTW1002RTJ PLASTIC CASE LABEL		2	*		
A07-1	8018M9-2	DTW1002RTJ PLASTIC CASE LABEL	O	2			

Please state Parts No. when your order.

Print Date 27/12/2023