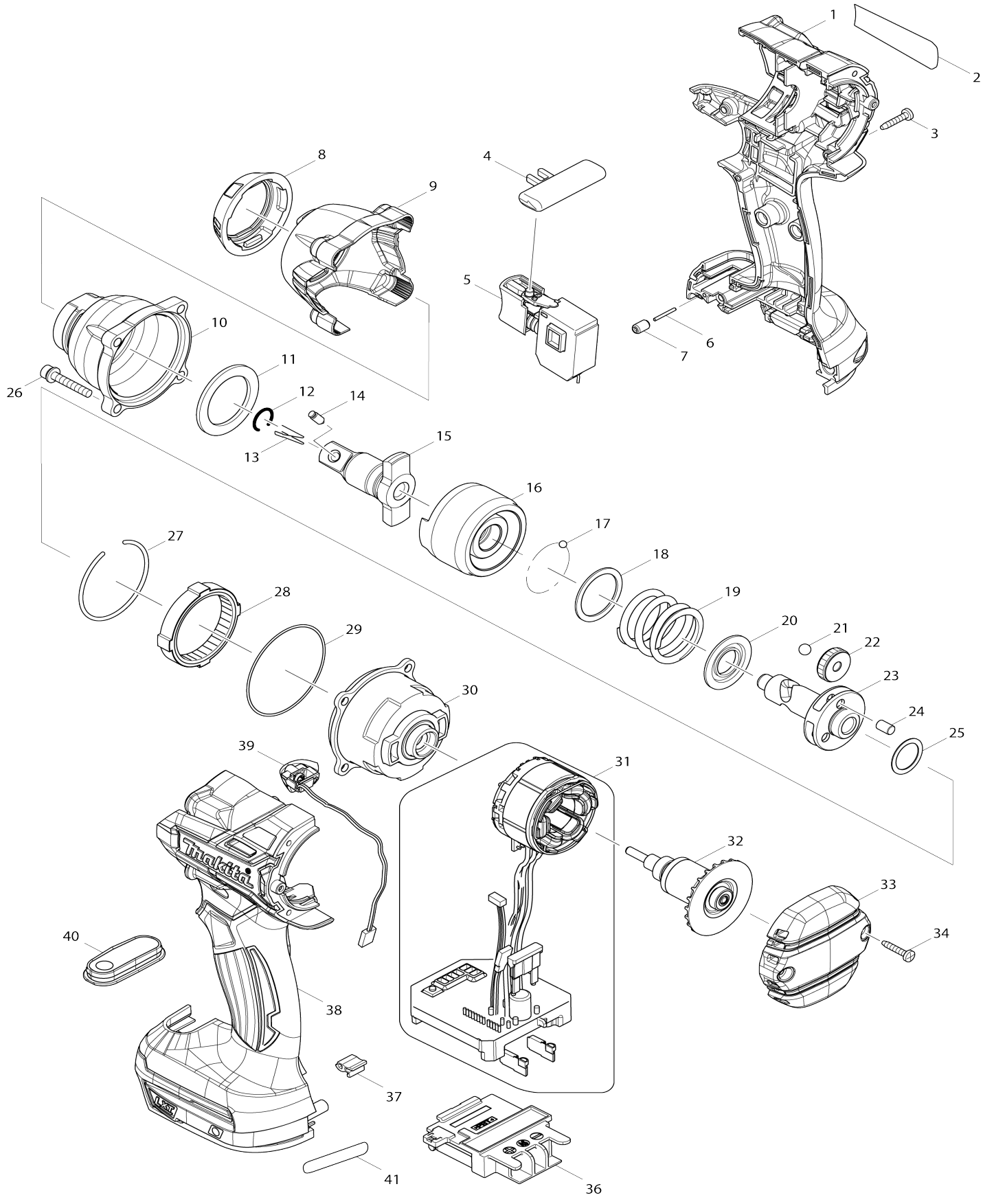


Model No.DTW281 CORDLESS IMPACT WRENCH



Model No.DTW281 CORDLESS IMPACT WRENCH

Item No.	Parts No.	Description	Interchangeability	Q'ty	New/Old	Note1	Note2
001	187819-5	HOUSING SET		1	*		
C10	263005-3	RUBBER PIN 6		2	*		
D10		INC. 38					
001-1	183D46-6	HOUSING SET	<	1			
C10	263005-3	RUBBER PIN 6		2			
D10		INC. 38					
002	815N14-8	DTW281 NAME PLATE		1			
003	266130-9	TAPPING SCREW BIND PT 3X16		8			
004	419041-9	F/R CHANGE LEVER		1			
005	650673-5	SWITCH C3JW-1A		1			
006	268184-2	PIN 1.5		1			
007	263036-2	RUBBER PIN 5		1			
008	424568-6	BUMPER		1			
009	454851-7	HAMMER CASE COVER		1			
010	142388-3	HAMMER CASE COMPLETE		1	*		
010-1	143911-7	HAMMER CASE COMPLETE	<	1	*		
010-2	140K43-7	HAMMER CASE COMPLETE	<	1			
011	261154-0	NYLON WASHER 28		1			
012	231907-1	RING SPRING 10		1			
015	135617-1	ANVIL E ASS'Y		1	*		
D10		INC. 12					
015-1	135824-6	ANVIL E ASS'Y	<	1			
D10		INC. 12					
016	326384-1	HAMMER		1			
017	216001-0	STEEL BALL 3.5		24			
018	267175-0	FLAT WASHER 24		1			
019	234322-8	COMPRESSION SPRING 25		1			
020	267766-7	CUP WASHER 14		1			
021	216011-7	STEEL BALL 5.6		2			
022	227338-0	SPUR GEAR 22		3			
023	326385-9	SPINDLE		1			
024	268311-1	PIN 5		3			
025	253147-1	FLAT WASHER 15		1			
026	266915-3	HEX.SOCKET HEAD BOLT M4X25		4	*		
026-1	922146-1	HEX. SOCKET HEAD BOLT M4X25	S	4			
027	233910-8	RING SPRING 43		1			
028	227337-2	INTERNAL GEAR 51		1			
029	213785-1	O-RING 49		1			
030	142389-1	INTERNAL GEAR CASE COMPLETE		1			
031	632D63-8	STATOR UNIT		1			
032	619341-9	ROTOR		1			
033	454850-9	REAR COVER		1			
034	266130-9	TAPPING SCREW BIND PT 3X16		2			
036	643860-3	TERMINAL		1			
037	424517-3	CUSHION		1			
038	187819-5	HOUSING SET		1	*		
C20	263005-3	RUBBER PIN 6		2	*		

D10		INC. 1				
038-1	183D46-6	HOUSING SET	<	1		
C20	263005-3	RUBBER PIN 6		2		
D10		INC. 1				
039	620295-5	LED CIRCUIT		1		
040	142394-8	SWITCH PLATE COMPLETE		1	*	
040-1	142394-8	SWITCH PLATE COMPLETE	<	1	*	
040-2	143848-8	SWITCH PLATE COMPLETE	<	1		
A01	266622-8	+ TRUSS HEAD SCREW M4X12		1		
A02	346317-0	HOOK		1		
F06-3	197606-4	BATTERY BL1830B SET (2PIECES)	O	1		
F07-3	197600-6	BATTERY BL1830B SET	O	1		
F08-4	197599-5	BATTERY BL1830B SET	O	1		
F09-1	196397-4	BATTERY BL1840 SET	O	1		
F10-1	196398-2	BATTERY BL1840 SET	O	1		
F11-1	196399-0	BATTERY BL1840 SET	O	1		
F12-1	196400-1	BATTERY BL1840 SET	O	1		
F13-1	196405-1	BATTERY BL1840 SET (2PIECES)	O	1		
F21-1	197265-4	BATTERY BL1840B SET	O	1		
F23-1	197267-0	BATTERY BL1840B SET	O	1		
F24-1	197273-5	BATTERY BL1840B SET(2PIECES)	O	1		
A03	821550-0	CONNECTOR PLASTIC CASE (TYP E2)		1		
C10	453974-8	LATCH		4		
A04	837670-0	INNER TRAY		1		
A05	803R32-2	DTW281RFJ INDICATION LABEL		1		
A06	803R33-0	DTW281RFJ PLASTIC CASE LABEL		2		
A07	***DC18RC	DC18RC FAST CHARGER		1		
A08	194204-5	BATTERY BL1830 SET		2	*	
A08-1	194204-5	BATTERY BL1830 SET	O	2	*	
A08-2	197600-6	BATTERY BL1830B SET	<	2	*	
A08-3	197600-6	BATTERY BL1830B SET	O	2		
A09	450128-8	BATTERY COVER		1		
A05	803R34-8	DTW281RMJ INDICATION LABEL		1		
A06	803R35-6	DTW281RMJ PLASTIC CASE LABEL		2		
A08	196399-0	BATTERY BL1840 SET		2	*	
A08-1	196399-0	BATTERY BL1840 SET	O	2	*	
A08-2	197265-4	BATTERY BL1840B SET	<	2	*	
A08-3	197265-4	BATTERY BL1840B SET	O	2		
A05	805M38-6	DTW281RTJ INDICATION LABEL		1		
A06	805M39-4	DTW281RTJ PLASTIC CASE LABEL		2		
A08-2	197280-8	BATTERY BL1850B SET		2	*	
A08-3	197280-8	BATTERY BL1850B SET	O	2		

Please state Parts No. when your order.

Print Date 17/10/2023