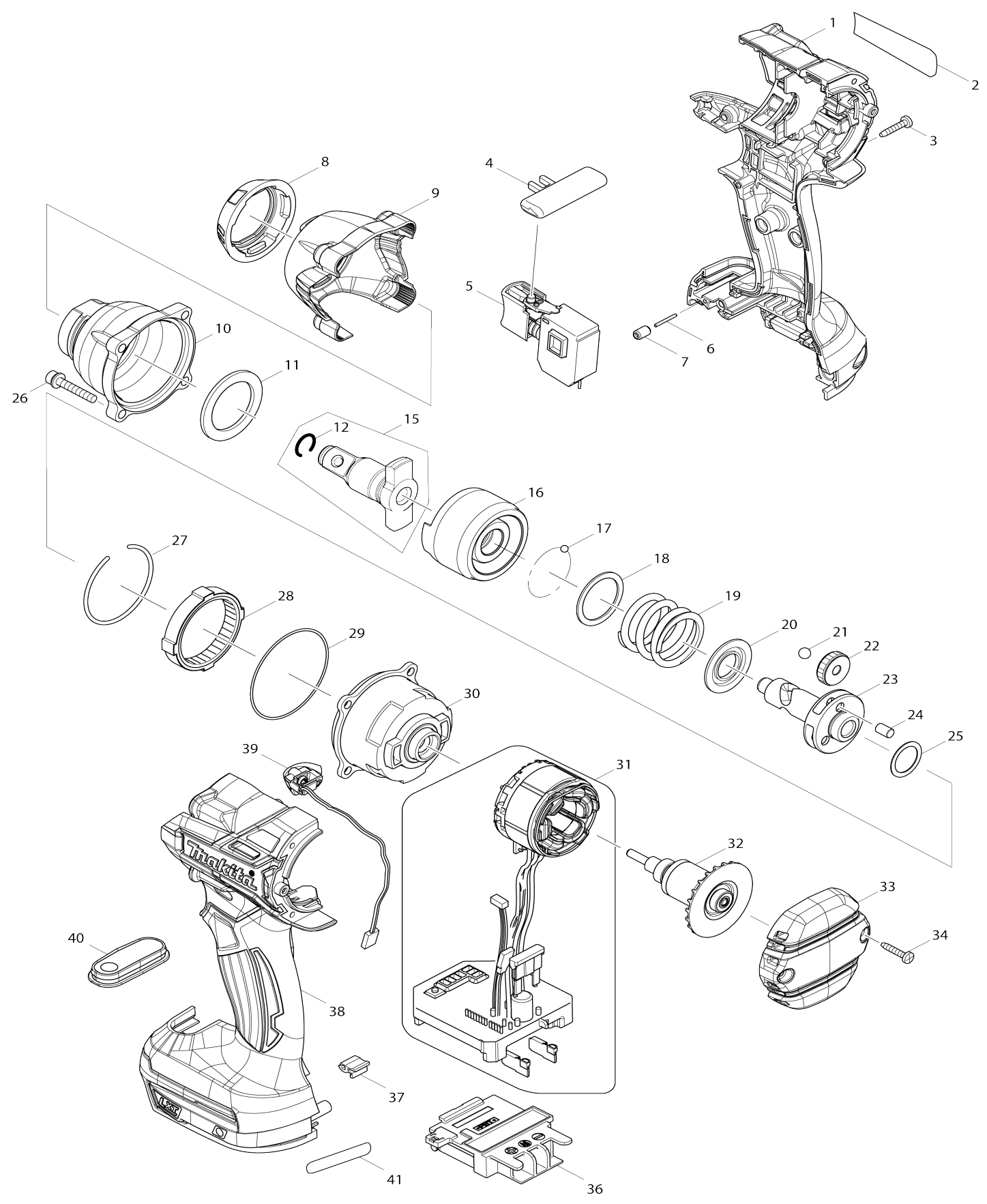


Model No.DTW285 CORDLESS IMPACT WRENCH



Model No.DTW285 CORDLESS IMPACT WRENCH

Item No.	Parts No.	Description	Interchangability	Q'ty	New/Old	Note1	Note2
001	183D46-6	HOUSING SET		1			
C10	263005-3	RUBBER PIN 6		2			
C20	252126-6	HEX. LOCK NUT M4-7		2			
D10		INC. 38					
002	852T92-3	DTW285 NAME PLATE		1			
003	266130-9	TAPPING SCREW BIND PT 3X16		8			
004	419041-9	F/R CHANGE LEVER		1			
005	650673-5	SWITCH C3JW-1A		1			
006	268184-2	PIN 1.5		1			
007	263036-2	RUBBER PIN 5		1			
008	424568-6	BUMPER		1			
009	454851-7	HAMMER CASE COVER		1			
010	143911-7	HAMMER CASE COMPLETE		1	*		
010-1	140K43-7	HAMMER CASE COMPLETE	<	1			
011	261154-0	NYLON WASHER 28		1			
012	231907-1	RING SPRING 10		1			
015	135824-6	ANVIL E ASS'Y		1			
D10		INC. 12					
016	326384-1	HAMMER		1			
017	216001-0	STEEL BALL 3.5		24	*		
017-1	216040-0	STEEL BALL 3.5	O	24			
018	267175-0	FLAT WASHER 24		1			
019	234322-8	COMPRESSION SPRING 25		1			
020	267766-7	CUP WASHER 14		1			
021	216011-7	STEEL BALL 5.6		2			
022	227338-0	SPUR GEAR 22		3			
023	326385-9	SPINDLE		1			
024	268311-1	PIN 5		3			
025	253147-1	FLAT WASHER 15		1			
026	266915-3	HEX.SOCKET HEAD BOLT M4X25		4	*		
026-1	922146-1	HEX. SOCKET HEAD BOLT M4X25	S	4			
027	233910-8	RING SPRING 43		1			
028	227337-2	INTERNAL GEAR 51		1			
029	213785-1	O-RING 49		1			
030	142389-1	INTERNAL GEAR CASE COMPLETE		1			
031	632J07-4	STATOR UNIT		1	*		
031-1	632J24-4	STATOR UNIT	<	1			
032	619341-9	ROTOR		1			
033	454850-9	REAR COVER		1			
034	266130-9	TAPPING SCREW BIND PT 3X16		2			
036	643860-3	TERMINAL		1			
037	424517-3	CUSHION		1			
038	183D46-6	HOUSING SET		1			
C10	263005-3	RUBBER PIN 6		2			
C20	252126-6	HEX. LOCK NUT M4-7		2			
D10		INC. 1					
039	620295-5	LED CIRCUIT		1			

040	144217-6	SWITCH PLATE COMPLETE		1		
A01	266622-8	+ TRUSS HEAD SCREW M4X12		1		
A02	346317-0	HOOK		1		
F01-1	197265-4	BATTERY BL1840B SET	O	1		
F02-1	197267-0	BATTERY BL1840B SET	O	1		
F06-1	197273-5	BATTERY BL1840B SET(2PIECES)	O	1		
F09-2	197599-5	BATTERY BL1830B SET	O	1		
F10-1	197600-6	BATTERY BL1830B SET	O	1		
F13-1	197606-4	BATTERY BL1830B SET (2PIECES)	O	1		
A03	821550-0	CONNECTOR PLASTIC CASE (TYP E2)		1		
C10	453974-8	LATCH		4		
A04	837670-0	INNER TRAY		1		
A05	810U41-2	DTW285RFJ INDICATION LABEL		1		
A06	810U42-0	DTW285RFJ PLASTIC CASE LABEL		2		
A07	***DC18RC	DC18RC FAST CHARGER		1		
D10		COMPO-PARTS				
A08	197600-6	BATTERY BL1830B SET		2	*	
A08-1	197600-6	BATTERY BL1830B SET	O	2		
A09	450128-8	BATTERY COVER		1		
A05	810U44-6	DTW285RMJ INDICATION LABEL		1		
A06	810U45-4	DTW285RMJ PLASTIC CASE LABEL		2		
A08	197265-4	BATTERY BL1840B SET		2	*	
A08-1	197265-4	BATTERY BL1840B SET	O	2		
A05	810U47-0	DTW285RTJ INDICATION LABEL		1		
A06	810U48-8	DTW285RTJ PLASTIC CASE LABEL		2		
A08	197280-8	BATTERY BL1850B SET		2	*	
A08-1	197280-8	BATTERY BL1850B SET	O	2		
001	183H09-6	HOUSING SET		1		
033	458010-5	REAR COVER		1		
038	183H09-6	HOUSING SET		1		
A04	197280-8	BATTERY BL1850B SET		1	*	
A04-1	197280-8	BATTERY BL1850B SET	O	1		

Please state Parts No. when your order.

Print Date 17/10/2023