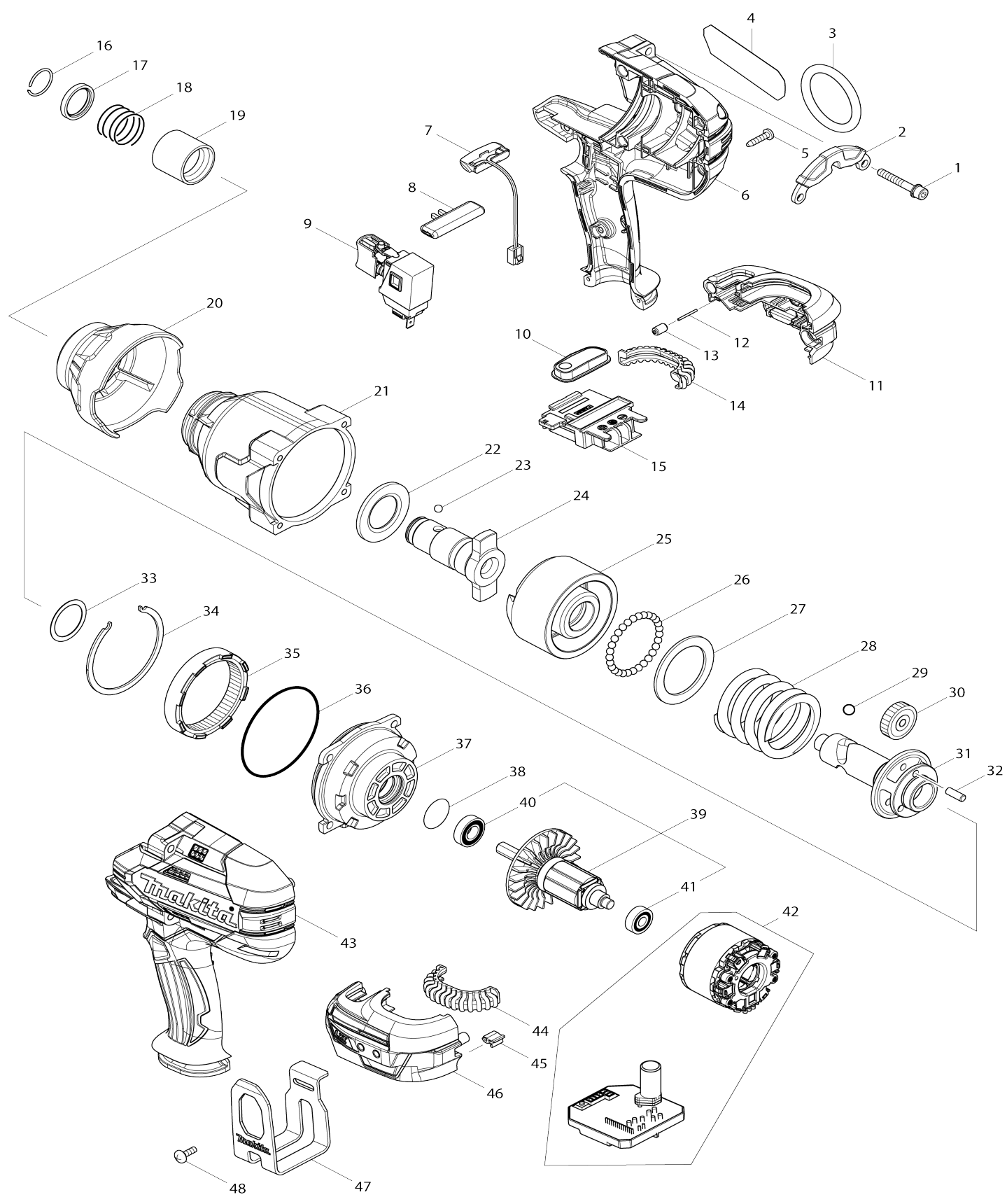


Model No.DTW800 CORDLESS IMPACT WRENCH



Model No.DTW800 CORDLESS IMPACT WRENCH

Item No.	Parts No.	Description	Interchangability	Q'ty	New/Old	Note1	Note2
001	251476-6	H.S.H.BOLT M5X35 WITH WR		4	*		
001-1	265D13-4	H.S.H.BOLT M5X35 WITH WRM	<	4			
002	162341-3	BRACKET		1			
003	282022-4	RING 40		1			
004	851K83-7	DTW800 NAME PLATE		1	*		
004-1	857K39-8	DTW800 NAME PLATE	S	1			
005	266326-2	TAPPING SCREW 4X18		9	*		
005-1	265995-6	TAPPING SCREW 4X18	O	9			
006	183C08-8	HOUSING SET		1	*		
D10		INC. 43					
006-1	183H36-3	HOUSING SET	O	1	*		
D10		INC. 43					
006-2	1830A6-1	HOUSING SET	<	1			
D10		INC. 43					
007	620351-1	LED CIRCUIT		1			
008	456268-0	F/R CHANGE LEVER		1			
009	143416-7	SWITCH COMPLETE		1			
010	143417-5	SWITCH PLATE COMPLETE		1			
011	183C12-7	BATTERY HOUSING SET		1			
C10	263005-3	RUBBER PIN 6		2			
D10		INC. 46					
012	268284-8	PIN 1.5		1			
013	263036-2	RUBBER PIN 5		1			
014	424773-5	CUSHION RUBBER		1	*		
014-1	422A56-3	CUSHION RUBBER	<	1			
015	643899-6	TERMINAL		1			
016	234384-6	RING SPRING 19		1			
017	326619-0	RING 21		1			
018	231434-8	COMPRESSION SPRING 22		1			
019	326618-2	SLEEVE		1	*		
019-1	327D31-1	BIT SLEEVE	<	1			
020	424775-1	BUMPER		1	*		
020-1	424978-7	BUMPER	<	1			
021	143411-7	HAMMER CASE COMPLETE		1	*		
021-1	144473-8	HAMMER CASE COMPLETE	S	1			
022	346948-5	WASHER 25		1			
023	216007-8	STEEL BALL 6.4		2			
024	326617-4	ANVIL H		1			
025	326613-2	HAMMER		1			
026	216002-8	STEEL BALL 4.8		29			
027	267493-6	FLAT WASHER 38		1			
028	234383-8	COMPRESSION SPRING 38		1			
029	216009-4	STEEL BALL 7.1		2			
030	227391-6	SPUR GEAR 24		3	*		
030-1	226879-3	SPUR GEAR 24	<	3	*		
030-2	226880-8	SPUR GEAR 24	O	3			
031	326611-6	SPINDLE		1			

032	268079-9	PIN 5		3		
033	267494-4	FLAT WASHER 25		1	*	
033-1	267127-1	FLAT WASHER 26	O	1		
034	346947-7	RETAINER		1		
035	227392-4	INTERNAL SPUR GEAR 54		1		
036	213720-9	O RING 67		1		
037	135718-5	INTERNAL GEAR CASE ASS'Y		1		
D10		INC. 36,38				
038	213961-7	O RING 22		1		
039	519384-0	ROTOR ASS'Y		1	*	
D10		INC. 40,41				
039-1	519593-1	ROTOR ASS'Y	O	1		
D10		INC. 40,41				
040	210069-8	BALL BEARING 6900DDW		1		
041	211022-7	BALL BEARING 607ZZ		1		
042	629170-2	STATOR COMPLETE		1	*	
042-1	629330-6	STATOR COMPLETE	<	1	*	
042-2	629B59-6	STATOR	S	1		
043	183C08-8	HOUSING SET		1	*	
D10		INC. 6				
043-1	183H36-3	HOUSING SET	O	1	*	
D10		INC. 6				
043-2	1830A6-1	HOUSING SET	<	1		
D10		INC. 6				
044	424773-5	CUSHION RUBBER		1	*	
044-1	422A56-3	CUSHION RUBBER	<	1		
045	424517-3	CUSHION		1		
046	183C12-7	BATTERY HOUSING SET		1		
C10	263005-3	RUBBER PIN 6		2		
D10		INC. 11				
047	346949-3	HOOK		1		
048	251314-2	+ SCREW M4X12		2		
049	857K40-3	DTW800 SERIAL NO. LABEL	S	1		
050	620K29-2	CONTROLLER	S	1		
051	652119-7	PAN HEAD SCREW M2X6	S	6		
B01	197538-5	RING SET		1		
D10		INC. 2,3				
F02	191G67-2	EXTENSION HANDLE SET		1		
A01	***DC18RC	DC18RC FAST CHARGER		1		
A02	194204-5	BATTERY BL1830 SET		2	*	
A02-1	197600-6	BATTERY BL1830B SET	<	2	*	
A02-2	197600-6	BATTERY BL1830B SET	O	2		
A03	450128-8	BATTERY COVER		1		
A04	821551-8	CONNECTOR PLASTIC CASE (TYP E3)		1		
C10	453974-8	LATCH		4		
A05	837645-9	INNER TRAY		1		
A06	808C07-6	DTW800RFJ INDICATION LABEL		1	*	
A07	808C08-4	DTW800RFJ PLASTIC CASE LABEL		2		
A02	197265-4	BATTERY BL1840B SET		2	*	
A02-1	197265-4	BATTERY BL1840B SET	O	2		
A06	808C09-2	DTW800RMJ INDICATION LABEL		1	*	

A07	808C10-7	DTW800RMJ PLASTIC CASE LABEL		2			
A02	197280-8	BATTERY BL1850B SET		2			
A06	808C11-5	DTW800RTJ INDICATION LABEL		1	*		
A07	808C12-3	DTW800RTJ PLASTIC CASE LABEL		2			

Please state Parts No. when your order.

Print Date 10/26/2023