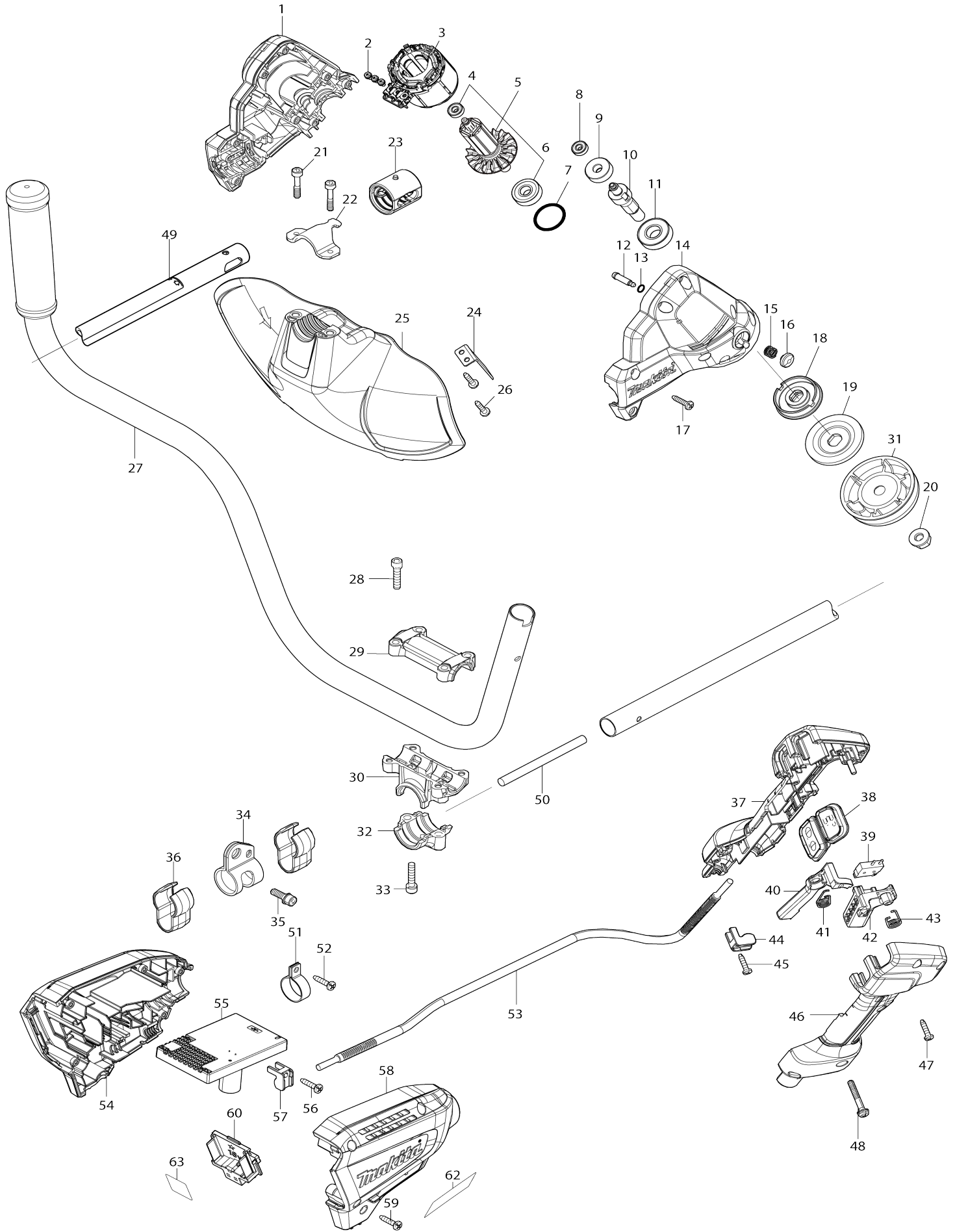


# Model No.DUR190U CORDLESS GRASS TRIMMER



Model No.DUR190U CORDLESS GRASS TRIMMER

Item No.	Parts No.	Description	Interchangability	Q'ty	New/Old	Note1	Note2
001	183P06-0	MOTOR HOUSING SET		1			
D10		INC. 14					
002	652069-6	FLAT HEAD SCREW M3X6		3			
003	629248-1	STATOR		1			
004	210215-3	BALL BEARING 695ZZ		1			
005	510449-1	ROTOR ASS'Y		1			
D10		INC. 4,6					
006	210049-4	BALL BEARING 609ZZ		1			
007	213380-7	O RING 24		1			
008	210215-3	BALL BEARING 695ZZ		1			
009	221492-2	HELICAL GEAR 26		1			
010	327542-2	CUTTER SHAFT		1			
011	211131-2	BALL BEARING 6001DDW		1			
012	256546-6	SHOULDER PIN 4		1			
013	213021-5	O RING 5		1			
014	183P06-0	MOTOR HOUSING SET		1			
D10		INC. 1					
015	233072-2	COMPRESSION SPRING 8		1			
016	412408-0	PIN CAP		1			
017	266326-2	TAPPING SCREW 4X18		8			
018	140T23-7	RECEIVE WASHER COMPLETE		1			
021	251513-6	H.S.H.BOLT M5X25		2			
022	347667-6	PROTECTOR CLAMP		1			
023	424567-8	RUBBER SLEEVE 24		1			
024	346855-2	CUTTER		1			
025	412392-9	PROTECTOR		1			
026	266326-2	TAPPING SCREW 4X18		2			
027	144374-0	HANDLE COMPLETE		1			
028	922241-7	HEX. SOCKET HEAD BOLT M5X25		4			
029	318272-6	HANDLE HOLDER 1		1			
030	319705-4	HANDLE HOLDER		1			
032	319703-8	PIPE CLAMP		1			
033	922241-7	HEX. SOCKET HEAD BOLT M5X25		2			
034	347116-3	HANGER		1			
035	922212-4	HEX. SOCKET HEAD BOLT M5X12		1			
036	457458-8	CLAMP		2			
037	183N99-5	GRIP SET		1			
C10	252180-0	HEX. LOCK NUT M5-8		1			
D10		INC. 46					
038	140T18-0	SUB CONTROLLER COMPLETE		1			
C10	8010M7-8	SWITCH LABEL		1			
C20	8010M8-6	INDICATION LABEL		1			
039	632E40-6	SWITCH UNIT		1			
040	455629-1	LOCK OFF LEVER		1	*		
040-1	413Y35-6	LOCK OFF LEVER	O	1			
041	233621-5	TORSION SPRING 9		1			
042	455816-2	SWITCH LEVER		1			

043	233612-6	TORSION SPRING 10		1		
044	687260-7	STRAIN RELIEF		1		
045	266326-2	TAPPING SCREW 4X18		1		
046	183N99-5	GRIP SET		1		
C10	252180-0	HEX. LOCK NUT M5-8		1		
D10		INC. 37				
047	266326-2	TAPPING SCREW 4X18		5		
048	911258-5	PAN HEAD SCREW M5X35		1		
049	140T20-3	PIPE COMPLETE		1		
C10	819N87-3	CAUTION LABEL		1		
C20	819312-8	MAKITA LOGO LABEL		1		
050	699090-4	POWER SUPPLY CORD UNIT		1		
051	346248-3	CLAMP 24		1		
052	266326-2	TAPPING SCREW 4X18		1		
053	699148-9	POWER SUPPLY CORD UNIT		1		
054	183P07-8	HOUSING SET		1	*	
C10	263005-3	RUBBER PIN 6		2	*	
D10		INC. 58				
054-1	183T27-6	HOUSING SET	<	1		
C10	263005-3	RUBBER PIN 6		2		
C20	422749-6	RUBBER SHEET		1		
D10		INC. 58				
055	620C56-1	CONTROLLER		1	*	
055-1	620F98-3	CONTROLLER	<	1		
056	266326-2	TAPPING SCREW 4X18		1		
057	687260-7	STRAIN RELIEF		1		
058	183P07-8	HOUSING SET		1	*	
C10	263005-3	RUBBER PIN 6		2	*	
D10		INC. 54				
058-1	183T27-6	HOUSING SET	<	1		
C10	263005-3	RUBBER PIN 6		2		
C20	422749-6	RUBBER SHEET		1		
D10		INC. 54				
059	266326-2	TAPPING SCREW 4X18		6		
060	644809-6	TERMINAL		1		
062	857C93-4	DUR190U NAME PLATE		1		
063	857C95-0	DUR190U SERIAL NO. LABEL		1		
A01	125520-4	BAND ASSEMBLY		1		
A05	198893-8	CUTTER ASSEMBLY 95-M10L SET ME		1		
C10	144259-0	SPOOL COVER COMPLETE		1		
C20	232289-4	COMPRESSION SPRING 15		1		
C30	456640-6	SPOOL HOLDER		1		
C40	456642-2	SPOOL		1		
A06	831304-7	ACCESSORY BAG		1		
A12	783202-0	HEX. WRENCH 4		1		
E01	807949-3	SOUND 94DB LABEL		1	*	
E01-1	807E85-5	SOUND 92DB LABEL	<	1		
A05	191D89-4	TRIMMER HEAD 96-M10L SET		1		

Please state Parts No. when your order.

Print Date 26/10/2023