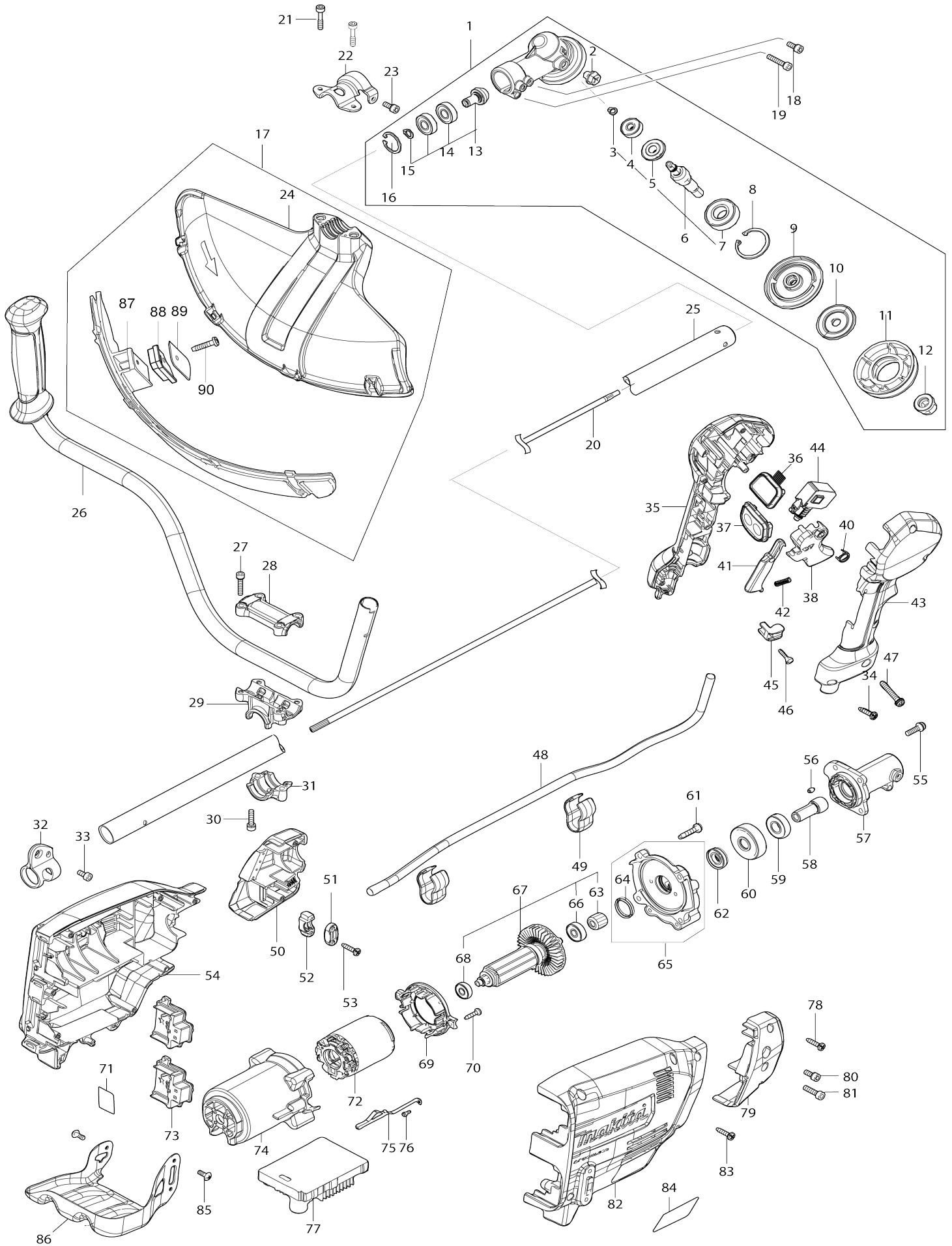


# Model No.DUR369A CORDLESS GRASS TRIMMER



Model No.DUR369A CORDLESS GRASS TRIMMER

Item No.	Parts No.	Description	Interchangability	Q'ty	New/Old	Note1	Note2
F01	199140-0	GUIDE RAIL 1000 SET		1			
F02	199141-8	GUIDE RAIL 1500 SET		1			
F03	194368-5	GUIDE RAIL 1400 SET		1			
F04	194925-9	GUIDE RAIL 1900 SET		1			
F05	194367-7	GUIDE RAIL 3000 SET		1			
F06	194416-0	SHEET 10000 SET		1			
F07	194417-8	RUBBER SHEET 10000 SET		1			
F08	194418-6	POSITION SHEET 1400 SET		1			
F09	194910-2	POSITION SHEET 1900 SET		1			
001	123853-1	GEAR CASE ASSEMBLY		1			
D10		INC. 2-16					
002	265590-2	+HEX.BOLT M8X10 WITH R		1			
003	232350-7	RING SPRING 6		1			
004	210030-5	BALL BEARING 627ZZ		1			
005	221484-1	SPIRAL BEVEL GEAR 19		1			
006	136233-2	CUTTER SHAFT ASS'Y		1			
D10		INC. 3-5,7					
007	211228-7	BALL BEARING 6202DDW		1			
008	257432-4	RETAINING RING R-35		1			
009	144312-2	RECEIVE WASHER COMPLETE		1			
010	347104-0	CLAMP WASHER		1			
011	457274-8	CUP US		1			
012	252236-9	HEX. LOCK NUT M10-17		1			
013	136235-8	SPIRAL BEVEL GEAR ASS'Y		1			
D10		INC. 14,15					
014	210049-4	BALL BEARING 609ZZ		2			
015	257986-1	RETAINING RING (EXT) S-9		1			
016	257987-9	RETAINING RING (INT)R-24		1			
017	191B54-1	PROTECTOR U 430 SET MG		1			
D10		INC. 24,87-90					
018	922216-6	H.S.H.BOLT M5X14 WITH W		1			
019	922242-5	HEX. SOCKET HEAD BOLT M5X25		1			
020	327056-1	SHAFT		1			
021	251513-6	H.S.H.BOLT M5X25		2			
022	347107-4	PROTECTOR CLAMP 24		1			
023	922216-6	H.S.H.BOLT M5X14 WITH W		1			
024	457271-4	PROTECTOR U 450		1			
025	140M97-6	SHAFT PIPE COMPLETE A		1			
C10	819312-8	MAKITA LOGO LABEL		1			
C20	819N87-3	CAUTION LABEL		1			
026	140L83-1	HANDLE 19 COMPLETE		1			
027	922241-7	HEX. SOCKET HEAD BOLT M5X25		4			
028	318272-6	HANDLE HOLDER 1		1			
029	319705-4	HANDLE HOLDER		1			
030	922241-7	HEX. SOCKET HEAD BOLT M5X25		2			
031	319703-8	PIPE CLAMP		1			
032	347116-3	HANGER		1			

033	922212-4	HEX. SOCKET HEAD BOLT M5X12		1		
034	266326-2	TAPPING SCREW 4X18		5		
035	183L61-8	GRIP SET		1		
C10	252180-0	HEX. LOCK NUT M5-8		1		
D10		INC. 43				
036	140K37-2	INDICATION CIRCUIT COMPLETE E		1		
037	140K35-6	SWITCH CIRCUIT COMPLETE G		1		
C10	819J26-9	SWITCH LABEL		1		
038	459145-5	SWITCH LEVER		1		
040	233540-5	TORSION SPRING 11		1		
041	459146-3	LOCK OFF LEVER		1		
042	233101-1	COMPRESSION SPRING 4		1		
043	183L61-8	GRIP SET		1		
C10	252180-0	HEX. LOCK NUT M5-8		1		
D10		INC. 35				
044	651436-2	SWITCH C3JW-1A-P-2		1		
045	687260-7	STRAIN RELIEF		1		
046	266326-2	TAPPING SCREW 4X18		1		
047	911258-5	PAN HEAD SCREW M5X35		1		
048	699132-4	POWER SUPPLY CORD UNIT		1		
049	457458-8	CLAMP		2		
050	183N25-4	HOUSING COVER SET		1		
D10		INC. 79				
051	687124-5	STRAIN RELIEF		1	*	
051-1	687052-4	STRAIN RELIEF	O	1		
052	687051-6	STRAIN RELIEF		1		
053	266326-2	TAPPING SCREW 4X18		2		
054	183N23-8	HOUSING SET		1		
C10	263005-3	RUBBER PIN 6		4		
C20	252126-6	HEX. LOCK NUT M4-7		3		
D10		INC. 82				
055	911233-1	PAN HEAD SCREW M5X20		4		
056	263002-9	RUBBER PIN 4		1		
057	319919-5	PIPE BRACKET		1		
058	325811-5	SPINDLE HUB		1		
059	211131-2	BALL BEARING 6001DDW		1		
060	226931-7	HELICAL GEAR 29		1		
061	266459-3	TAPPING SCREW 5X25		4		
062	211150-8	BALL BEARING 6901ZZ		1		
063	226932-5	HELICAL GEAR 10		1		
064	213961-7	O RING 22		1		
065	136230-8	GEAR BOX ASS'Y		1		
D10		INC. 64				
066	210005-4	BALL BEARING 608DDW		1		
067	519587-6	ROTOR ASS'Y		1		
D10		INC. 63,66,68				
068	210062-2	BALL BEARING 607ZZ		1		
069	459764-7	BAFFLE PLATE		1		
070	266326-2	TAPPING SCREW 4X18		2		
071	856H96-5	DUR369A SERIAL NO. LABEL		1		
072	629443-3	STATOR		1	*	

072-1	629471-8	STATOR	O	1	*		
072-2	629C13-6	STATOR	S	1			
073	644809-6	TERMINAL		2			
074	459763-9	MOTOR HOUSING		1			
075	347620-2	PLATE		1	*		
075-1	654887-8	EARTH PLATE	O	1			
076	911102-6	PAN HEAD SCREW M4X6		1			
077	620C08-2	CONTROLLER		1			
078	266326-2	TAPPING SCREW 4X18		2			
079	183N25-4	HOUSING COVER SET		1			
D10		INC. 50					
080	922211-6	H.S.H.BOLT M5X12 WITH W		1	*		
080-1	922216-6	H.S.H.BOLT M5X14 WITH W	O	1			
081	922233-6	H.S.H.BOLT M5X20 WITH WR		1			
082	183N23-8	HOUSING SET		1			
C10	263005-3	RUBBER PIN 6		4			
C20	252126-6	HEX. LOCK NUT M4-7		3			
D10		INC. 54					
083	266326-2	TAPPING SCREW 4X18		7			
084	856H88-4	DUR369A NAME PLATE		1			
085	251314-2	+ SCREW M4X12		3			
086	347563-8	BATTERY GUARD		1			
087	144316-4	PROTECTOR U EXT. 420-450 COM P		1			
C10	346696-6	HOOK		2			
C20	232284-4	LEAF SPRING		2			
088	459765-5	CUTTER EXTENSION		1			
089	347115-5	CUTTER		1			
090	266459-3	TAPPING SCREW 5X25		1			
091	620L68-8	CONTROLLER B	S	1			
092	638A31-1	LEAD UNIT	S	1			
093	652119-7	PAN HEAD SCREW M2X6	S	6			
A01	122906-3	BAND ASSY		1			
A02	197993-1	TRIMMER HEAD 95-M10L SET ME		1			
C10	456640-6	SPOOL HOLDER		1			
C20	232289-4	COMPRESSION SPRING 15		1			
C30	144259-0	SPOOL COVER COMPLETE		1			
C40	456642-2	SPOOL		1			
A03	126642-3	PLASTIC BLADE ASSEMBLY255-M 10L		1			
A04	144392-8	TOOL COVER 2T		1			
A05	198345-9	CUTTER BLADE 255-2 SET ME		1			
A06	782238-6	BOX WRENCH 17		1			
A07	783202-0	HEX. WRENCH 4		1			
A08	831304-7	ACCESSORY BAG		1			
F14	1912L4-0	PROTECTOR 225 SET MG		1			
F17	197472-9	NYLON CORD 2.0-15M SET		1			
F18	197473-7	NYLON CORD 2.0-30M SET		1			
F19	197474-5	NYLON CORD 2.0-160M SET		1			
F20	197475-3	NYLON CORD 2.0-280M SET		1			
F26	199868-0	PLASTIC BLADE 305 SET MG		1			
F27	199870-3	PLASTIC BLADE 305 BLADE SET		1			

		MG				
F28	198266-5	TRIMMER HEAD 110-M10L SET M E		1		
F34	198502-9	NYLON CORD 2.4-30M SET		1		
F35	198503-7	NYLON CORD 2.4-120M SET		1		
F36	198504-5	NYLON CORD 2.4-180M SET		1		
F39	199378-7	BAND ASSEMBLY SET		1		
F40-1	199450-5	GREASE VESSEL SET	O	1		
A01	196129-9	BAND ASSEMBLY SET		1		
A10	197422-4	BATTERY BL1860B SET		2		
A11	***DC18RD	DC18RD TWO PORT FAST CHARG ER		1		
D10		COMPO-PARTS				

Please state Parts No. when your order.

Print Date 03/01/2024