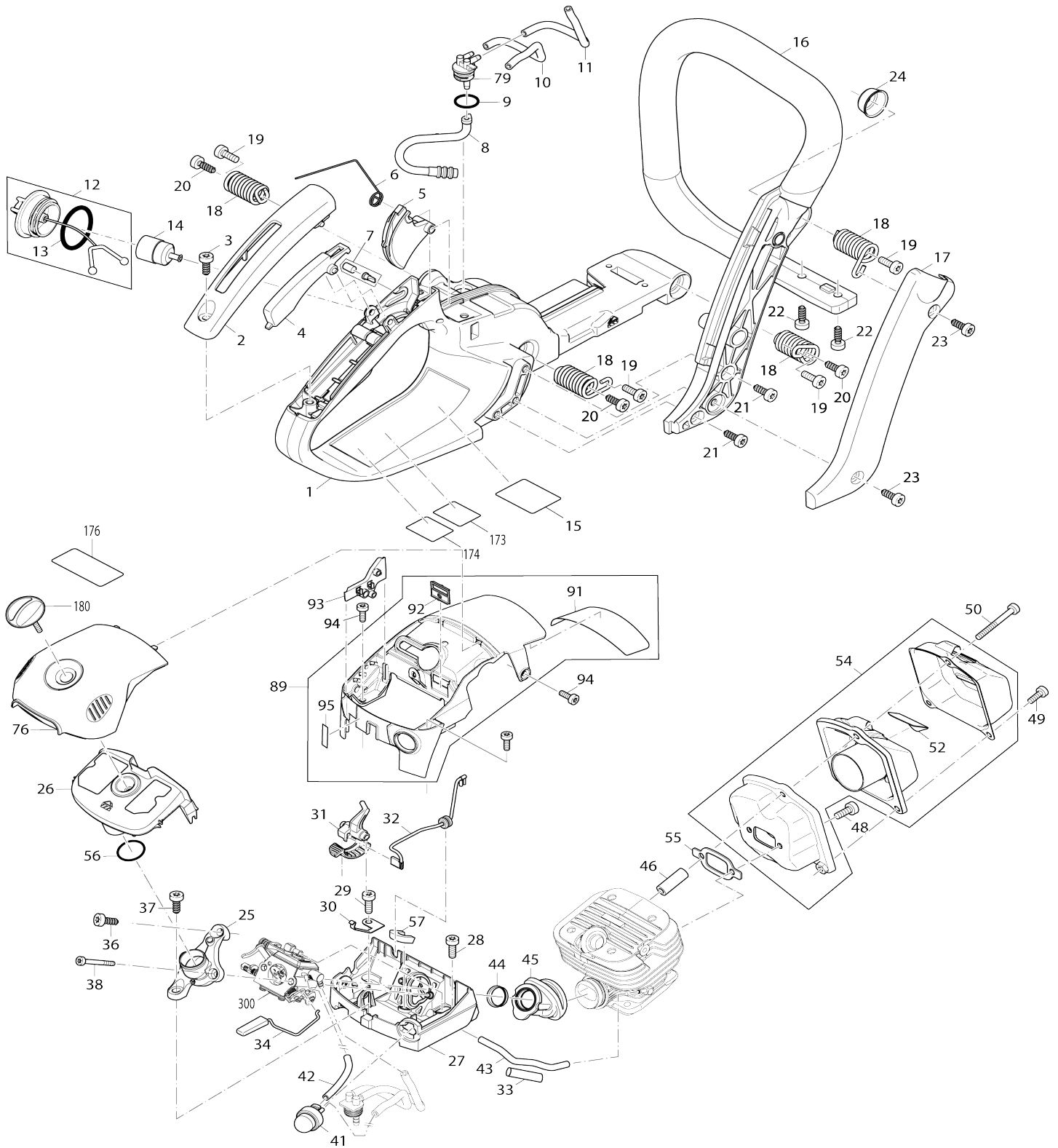
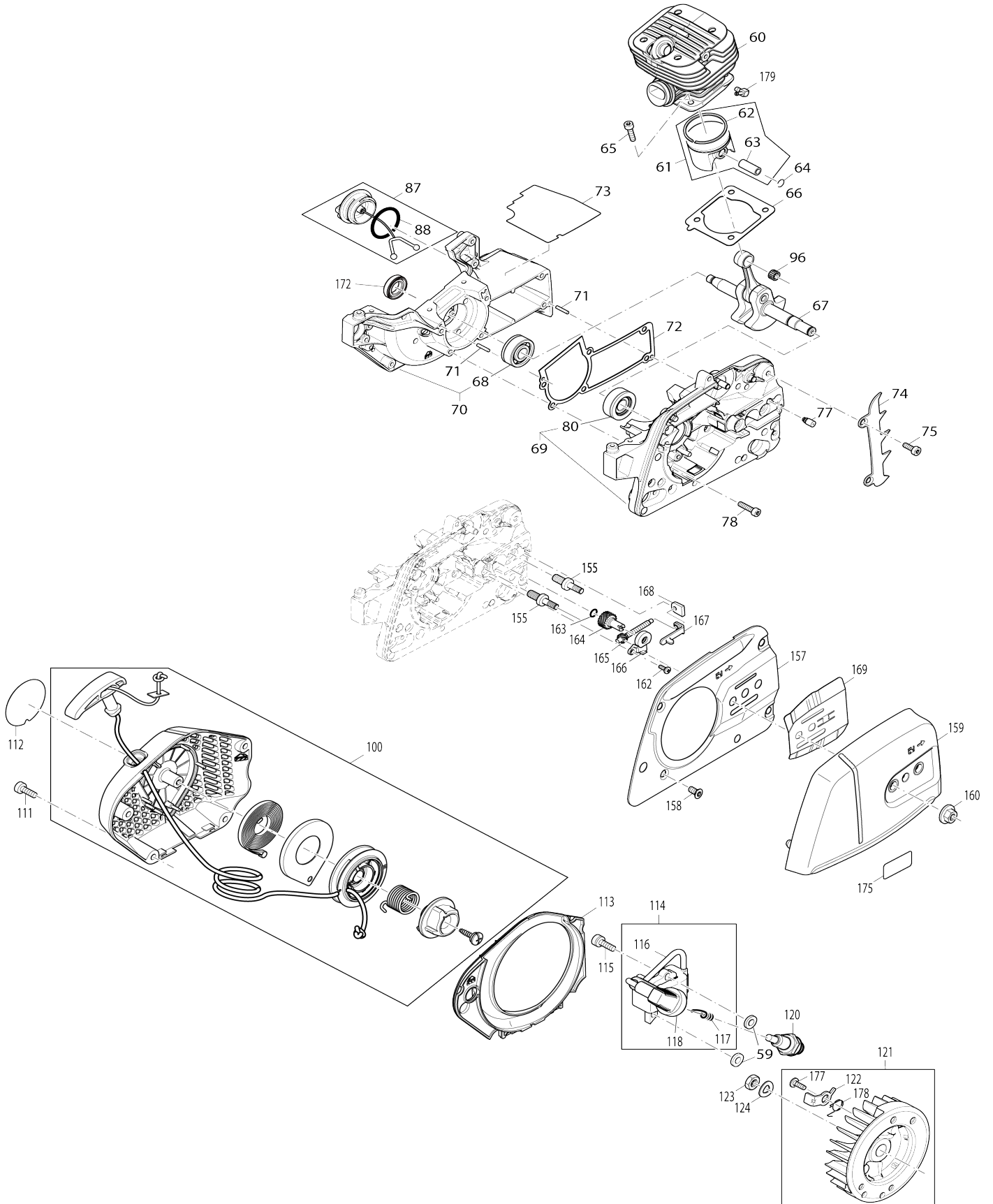


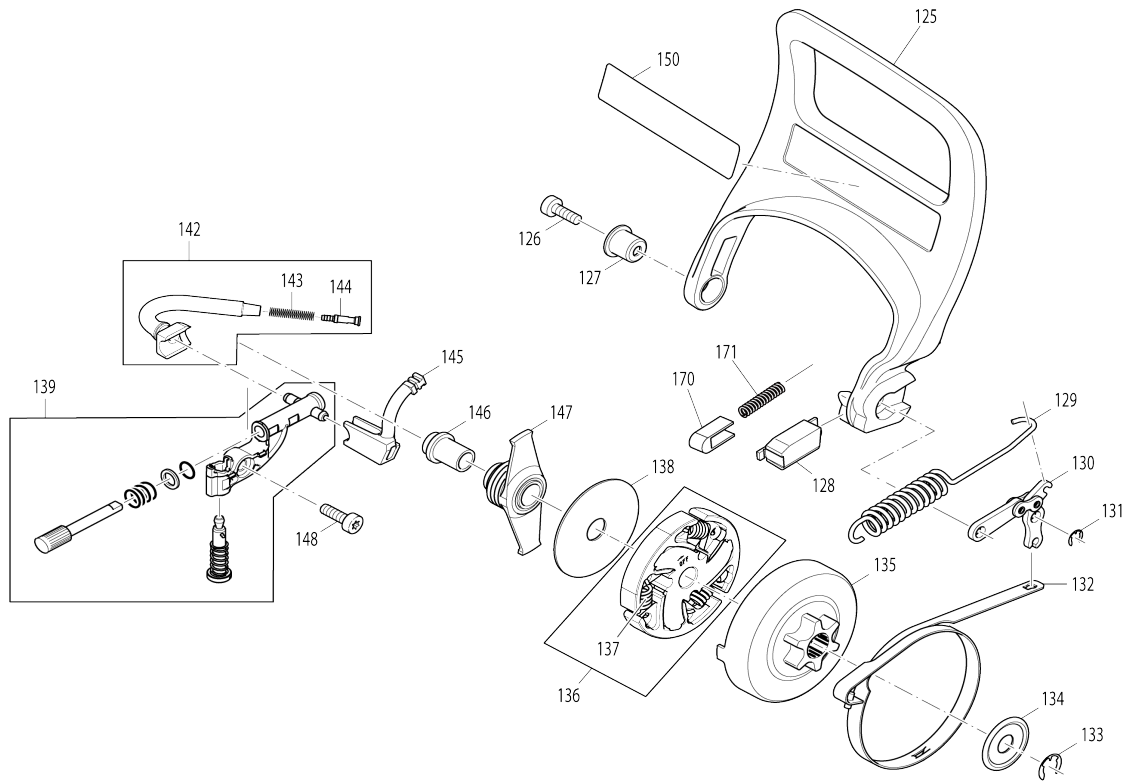
Model No. EA4300F PETROL CHAIN SAW



Model No.EA4300F PETROL CHAIN SAW



Model No.EA4300F PETROL CHAIN SAW



Model No.EA4300F PETROL CHAIN SAW

Item No.	Parts No.	Description	Interchangeability	Q'ty	New/Old	Note1	Note2
001	143341-2	FUEL TANK WELDED BLUE		1			
002	456143-0	GRIP OUTER SHELL		1			
003	266478-9	H.L.TAPPING SCREW 5.5X16		1			
004	456142-2	CATCH LEVER		1			
005	456141-4	THROTTLE LEVER		1			
006	231866-9	TORSION SPRING 10		1			
007	195762-4	AIR VALVE SET		1			
008	424456-7	FUEL LINE		1			
009	213586-7	O RING 11.5		1			
010	424756-5	TUBE 2.5-118		1			
011	424757-3	TUBE 3.0-93		1			
012	168823-3	TANK CAP COMPLETE		1			
D10		INC. 13					
013	213080-9	O RING 29.5		1			
014	163447-0	FUEL FILTER		1	*		
014-1	163447-0	FUEL FILTER	O	1			
015	852C42-6	EA4300F NAME PLATE		1			
016	456140-6	TUBULAR HANDLE		1			
017	456151-1	SIDE COVER MAKITA BLUE		1			
018	234189-4	COMPRESSION SPRING 12		4			
019	266605-8	H.L. SOCKET HEAD BOLT M5X16		4			
020	266478-9	H.L.TAPPING SCREW 5.5X16		3			
021	266478-9	H.L.TAPPING SCREW 5.5X16		2			
022	266478-9	H.L.TAPPING SCREW 5.5X16		2			
023	266478-9	H.L.TAPPING SCREW 5.5X16		2			
024	346517-2	CUP WASHER 6		1			
025	456135-9	INTAKE MANIFOLD		1	*		
025-1	459832-6	INTAKE MANIFOLD	O	1			
026	123452-9	AIR FILTER CPL.NYLON		1			
027	456169-2	CARBURETOR BOTTOM		1			
028	266605-8	H.L. SOCKET HEAD BOLT M5X16		1			
029	266605-8	H.L. SOCKET HEAD BOLT M5X16		1			
030	346926-5	CONTACT SPRING		1	*		
030-1	347357-1	CONTACT SPRING	<	1			
031	456139-1	CHOKE LEVER		1			
032	632F41-0	SHORT-CIRCUIT CABLE		1			
033	424759-9	ISOLATING TUBE 6-30		1			
034	143330-7	THROTTLE LINKAGE		1			
036	266478-9	H.L.TAPPING SCREW 5.5X16		1			
037	266478-9	H.L.TAPPING SCREW 5.5X16		1			
038	251478-2	H.L. SOCKET HEAD BOLT M4X40		2	*		
038-1	266604-0	H.L. SOCKET HEAD BOLT M4X40	O	2			
041	168398-2	PRIMER PUMP		1			
042	424754-9	TUBE 2.5-55		1			
043	424755-7	TUBE 2.5-93		1			
044	346413-4	BUSH 17		1			
045	424753-1	INTAKE HOSE		1			

046	326675-0	CONNECTING LINK		1	*		
046-1	325939-9	CONNECTING LINK	O	1			
048	266605-8	H.L. SOCKET HEAD BOLT M5X16		2			
049	266612-1	H.L. SOCKET HEAD BOLT M5X10		2			
050	266943-8	H.L. SOCKET HEAD BOLT M5X40		1	*		
050-1	266606-6	H.L. SOCKET HEAD BOLT M5X40	O	1			
052	352027-9	SPARK ARRESTER SCREEN		1			
054	161363-0	MUFFLER COMPLETE		1			
D10		INC. 52					
055	346304-9	GASKET		1			
056	213085-9	O-RING 20		1			
057	424752-3	PACKING RING		1			
059	451462-9	ISOLATING WASHER		2			
060	319338-5	CYLINDER D=42		1	*		
060-1	144710-0	CYLINDER COMPLETE	X	1	*		
D10		INC. 179					
060-2	140L37-8	CYLINDER COMPLETE	S	1			
D10		INC. 179					
061	143332-3	PISTON 42 CPL.		1			
D10		INC. 62,63					
062	257383-1	PISTON RING 42		1			
063	268339-9	PISTON PIN 9		1			
064	232302-8	CIRCRIP 9		2			
065	266960-8	H.L. SOCKET HEAD BOLT M5X20		4			
066	346925-7	CYLINDER BASE GASKET		1			
067	143329-2	CRANKSHAFT CPL.		1	*		
067-1	140H65-9	CRANKSHAFT COMPLETE	S	1			
068	211494-6	BALL BEARING 6201		1	*		
068-1	211341-1	BALL BEARING 6201	O	1			
069	143333-1	CRANKCASE CS COMPLETE BLUE		1	*		
D10		INC. 71,77,80					
069-1	144393-6	CRANKCASE CS COMPLETE BLUE	S	1			
D10		INC. 71,77,80					
070	143337-3	CRANKCASE MS COMPLETE BLUE		1	*		
D10		INC. 68					
070-1	144394-4	CRANKCASE MS COMPLETE BLUE	S	1			
D10		INC. 68					
071	258038-1	CLAMPING PIN		2	*		
071-1	951063-8	SPRING PIN 3-16	O	2			
072	346924-9	CRANK CASE GASKET		1			
073	346928-1	HEAT PROTECTION FOIL		1			
074	346301-5	SPIKE BAR		1			
075	266605-8	H.L. SOCKET HEAD BOLT M5X16		2			
076	456159-5	HOOD		1			
077	168504-9	VENT VALVE		1			
078	266960-8	H.L. SOCKET HEAD BOLT M5X20		6			
079	452018-1	FUEL NIPPLE		1			
080	219024-7	DEEP GROOVE BALL BEARING		1			
087	168823-3	TANK CAP COMPLETE		1			
D10		INC. 88					
088	213080-9	O RING 29.5		1			
089	161368-0	HOOD COMPLETE BLACK		1			

D10		INC. 91,92,95				
091	346929-9	PROTECTION FILM HOOD		1		
092	456157-9	SHUTTER PLATE		1		
093	456138-3	GUIDE		1		
094	266605-8	H.L. SOCKET HEAD BOLT M5X16		3		
095	816917-5	INDICATION LABEL		1		
096	212093-7	NEEDLE CAGE 912		1		
100	161365-6	STARTER COMPLETE BLUE		1		
111	266605-8	H.L. SOCKET HEAD BOLT M5X16		4		
112	809A28-9	EA4300F MODEL NO. LABEL		1		
113	456137-5	AIR GUIDE PLATE		1		
114	161357-5	IGNITION COIL COMPLETE		1	*	
D10		INC. 116,117,118				
114-1	161357-5	IGNITION COIL COMPLETE	O	1		
D10		INC. 116,117,118				
115	266472-1	TORX SOCKET HEAD BOLT M5X20		2	*	
115-1	266472-1	TORX SOCKET HEAD BOLT M5X20	O	2	*	
115-2	265641-1	H.L. SOCKET HEAD BOLT M5X20	O	2		
116	444042-8	ISOLATING TUBE 6-80		1		
117	234358-7	TERMINAL SPRING		1		
118	424750-7	PLUG CAP		1		
120	168599-2	SPARK PLUG NGK CMR7A-5		1		
121	143331-5	FLYWHEEL COMPLETE		1		
D10		INC. 122,177,178				
122	346916-8	RATCHET		2		
123	264022-6	HEX. NUT M8X1		1		
124	267822-3	SPRING WASHER 8		1		
125	456136-7	HAND PROTECTION		1		
126	266605-8	H.L. SOCKET HEAD BOLT M5X16		1		
127	326596-6	BUSH		1		
128	450926-0	STOPPER CASE		1		
129	231870-8	TENSION SPRING 10		1		
130	163500-2	LINK PLATE COMPLETE		1		
131	257934-0	STOP RING E-4		1	*	
131-1	961011-9	STOP RING E-4	O	1		
132	346029-5	BRAKE BAND		1		
133	259045-7	STOP RING E-8		1		
134	267820-7	WASHER 29		1		
135	158927-9	CLUTCH DRUM COMPLETE		1	*	
135-1	158927-9	CLUTCH DRUM COMPLETE	O	1		
136	123454-5	CLUTCH ASSEMBLY		1	*	
D10		INC. 137				
136-1	123857-3	CLUTCH ASSEMBLY	O	1	*	
D10		INC. 137				
136-2	127443-2	CLUTCH ASSEMBLY	O	1		
D10		INC. 137				
137	231896-0	TENSION SPRING		3	*	
137-1	232352-3	TENSION SPRING 6	O	3	*	
137-2	232352-3	TENSION SPRING 6	O	3		
138	267389-1	FLAT WASHER 12		1	*	

138-1	253454-2	FLAT WASHER 12	O	1		
139	161346-0	OIL PUMP COMPLETE		1		
142	168645-1	OIL SUCTION LINE COMPLETE		1		
D10		INC. 144,143				
143	234207-8	COMPRESSION SPRING 6		1		
144	452666-6	NIPPLE		1	*	
144-1	452666-6	NIPPLE	O	1		
145	424178-9	OIL TUBE		1		
146	325604-0	BUSH		1		
147	450956-1	PUMP DRIVE		1		
148	266605-8	H.L. SOCKET HEAD BOLT M5X16		1		
150	810075-9	CAUTION LABEL		1	*	
150-1	817T83-1	CAUTION LABEL	<	1	*	
150-2	818L12-9	CAUTION LABEL	<	1		
155	266978-9	BOLT		2		
157	346927-3	CHAIN BRAKE COVER		1		
158	266477-1	H.L. C.S. HEAD SCREW M5X12		2		
159	161440-8	SPROCKET GUARD CPL. MAKITA		1	*	
159-1	161791-9	SPROCKET GUARD CPL. MAKITA	<	1		
160	252145-2	COLLARED HEX NUT M8		2	*	
160-1	264055-1	COLLARED HEX. NUT M8	O	2		
162	251480-5	TAPPING SCREW ST3.5X9.5		1	*	
162-1	266484-4	H.L SOCKET HEAD BOLT M5X12	S	1		
163	213082-5	O-RING 7		1	*	
163-1	213594-8	O RING 7	O	1		
164	226693-7	HELICAL GEAR 18		1	*	
164-1	227744-9	HELICAL GEAR 18	O	1		
165	226692-9	HELICAL GEAR 11		1	*	
165-1	227743-1	HELICAL GEAR 11	O	1		
166	452667-4	GEAR COVER PROFESSIONAL		1		
167	346300-7	TENSION SLIDE		1	*	
167-1	347252-5	TENSION SLIDE	S	1		
168	450929-4	GUIDE PLATE		1	*	
168-1	452668-2	CLAMP SCREW BEDDING	O	1		
169	346518-0	GUIDE PLATE		1		
170	313212-9	HAND GUARD GUIDE		1		
171	234093-7	COMPRESSION SPRING 3		1		
172	213141-5	OIL SEAL 12		1		
173	802K41-6	SOUND 113DB LABEL		1	*	
173-1	807U97-4	SOUND 115DB LABEL	S	1		
177	266626-0	H.L. TAPPING SCREW 5X12		2		
178	232303-6	TORSION SPRING 13		2		
179	325938-1	ANGULAR NIPPLE		1		
180	266977-1	THUMB SCREW		1		
300	161371-1	CARBURETOR DM23B		1	*	
300-1	161371-1	CARBURETOR DM23B	O	1		
C10	ZJ00000077	NOZZLE ASSEMBLY		1		
C12	ZJ00000097	PUMP COVER KIT		1		
C14	ZJ00000020	SCREW (PUMP COVER)		1		
C16	ZJ00000026	SCREW,IDLE MIXTURE		1		
C18	ZJ00000027	SCREW,MAIN MIXTURE		1		
C20	ZJ00000037	STRAINER		1		

C22	ZJ00000073	SPRING		1		
C24	ZJ00000015	THROTTLE SHAFT ASSY		1		
C26	ZJ00000012	SHAFT ASSY,CHOKE		1		
C28	ZJ00000030	VALVE,THROTTLE		1		
C30	ZJ00000001	SCREW		2		
C32	ZJ00000036	PLUG,ACC POCKET		1		
C34	ZJ00000098	THROTTLE LEVER SCREEN		1		
C36	ZJ00000022	LEVER,THROTTLE		1		
C38	ZJ00000023	SCREW		1		
C40	ZJ00000021	COLLAR		1		
C42	ZJ00000028	COVER,METERING		1		
C44	ZJ00000014	SCREW (WITH SERRATION)		2		
C46	ZJ00000033	WASHER		1		
C48	ZJ00000031	LEVER,CHOKE		1		
C50	ZJ00000099	CHOKE LEVER		1		
C52	ZJ00000017	E-RING		1		
C54	ZJ00000024	VALVE,CHOKE		1		
C56	ZJ00000005	PLUNGER KIT		1		
C58	ZJ00000032	SPRING,CHOKE RETURN		1		
C60	ZJ00000040	SPRING,THROTTLE RETURN		1		
D10		INC. 301-310				
301	ZJ00000003	STRAINER		1		
302	ZJ00000008	PIN		1		
303	ZJ00000078	SPRING, METERING LEVER		1		
304	ZJ00000006	LEVER		1		
305	ZJ00000007	VALVE, INLET NEEDLE		1		
306	ZJ00000009	SCREW (METERING LEVER PIN)		1		
307	ZJ00000079	METERING CHAMBER GASKET		1		
308	ZJ00000013	DIAPHRAGM ASS'Y,METERING		1		
309	ZJ00000029	DIAPHRAGM, PUMP		1		
310	ZJ00000016	GASKET, PUMP		1		
311	ZJ00000081	REBUILT KIT		1		
D10		INC. 301-306,312				
312	ZJ00000082	GASKET&DIAPHRAGM KIT		1		
D10		INC. 307-310				
313	347438-1	COOLING PLATE	S	1		
314	183M69-8	NYLON FILTER SET BLACK		1	*	
D10		INC. 25,26,56,76,89,94,180				
314-1	183M92-3	NYLON FILTER SET BLACK	O	1		
D10		INC. 25,26,56,76,89,94,180				
A01	161420-4	GUIDE BAR 15		1	*	
A01-1	161420-4	GUIDE BAR 15	O	1		
A02	419560-5	CHAIN PROTECTION COVER 430		1		
A03	197324-4	TOOL KIT		1		
C10	782025-3	HEXALOBULAR WRENCH 27		1		
C20	782026-1	UNIVERSAL WRENCH 13/16		1		
C30	783012-5	SCREWDRIVER		1		
C40	831340-3	TOOL BAG		1		
A04	532484064	SAW CHAIN .325.050"ML L64 MC M		1		
B01	183L41-4	CYLINDER PISTON SET		1		
D10		INC. 59-61,179				

A01	162487-5	GUIDE BAR 13		1	*		
A01-1	162487-5	GUIDE BAR 13	O	1			
A02	419559-0	CHAIN PROTECTION COVER 330		1			
A04	532484056	SAW CHAIN .325.050"ML L56 MC M		1			

Please state Parts No. when your order.

Print Date 18/10/2023