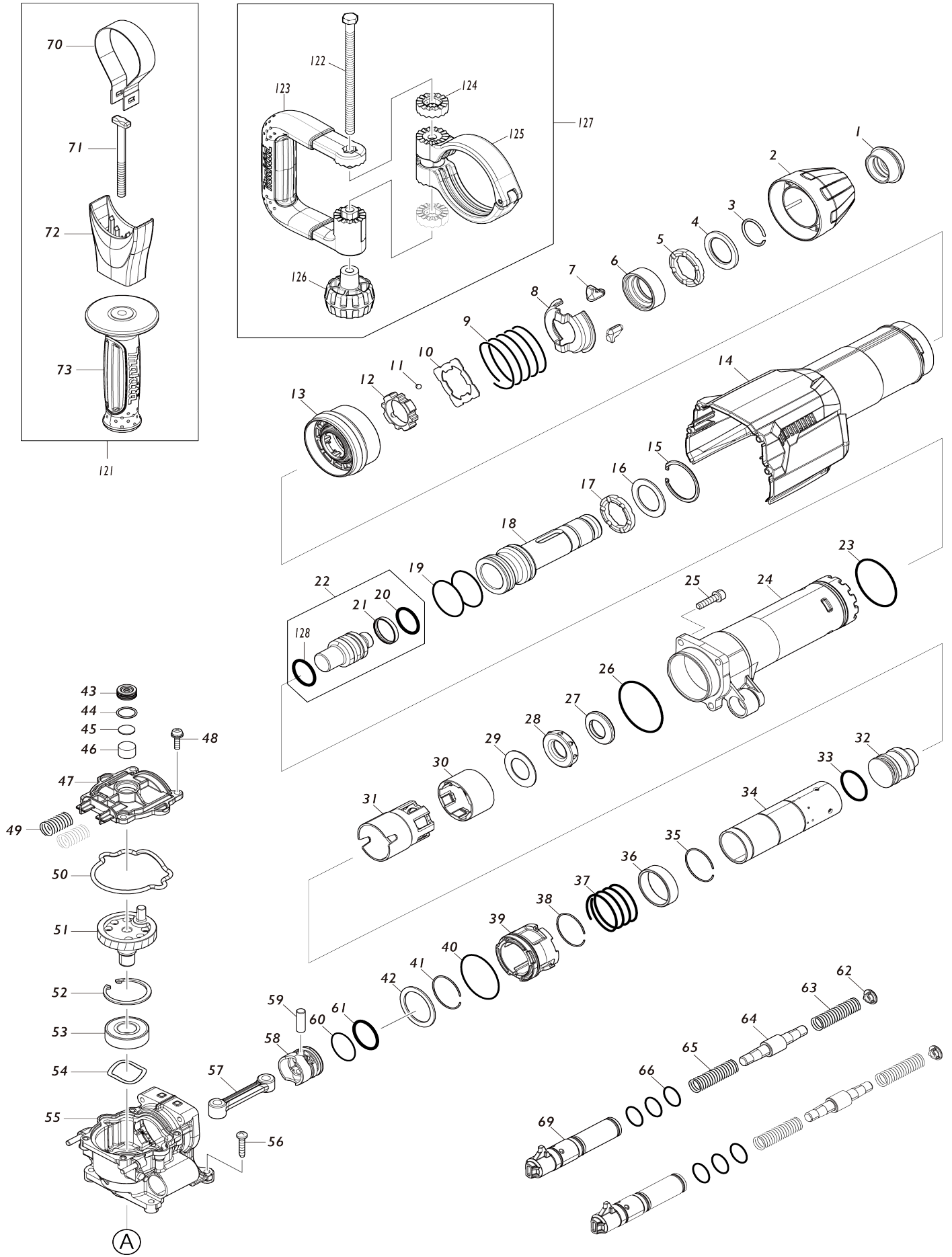
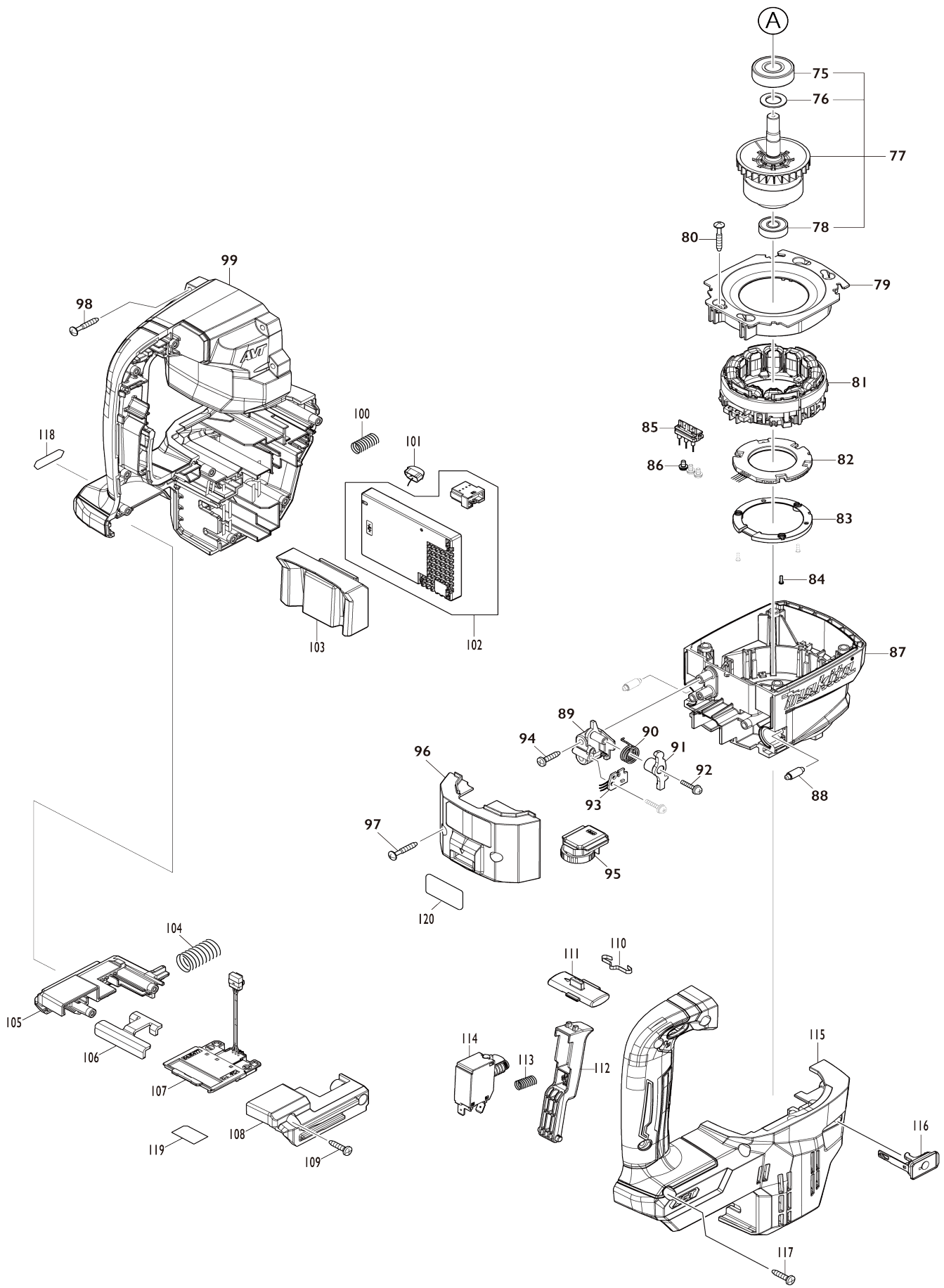


# Model No.HM001G CORDLESS DEMOLITION HAMMER



# Model No.HM001G CORDLESS DEMOLITION HAMMER



Model No.HM001G CORDLESS DEMOLITION HAMMER

Item No.	Parts No.	Description	Interchangability	Q'ty	New/Old	Note1	Note2
001	286287-0	TOOL HOLDER CAP		1			
002	451432-8	CHUCK COVER		1			
003	231984-3	RING SPRING 25		1			
004	267272-2	FLAT WASHER 28		1			
005	424261-2	RUBBER RING 28		1			
006	331659-5	CHUCK RING		1			
007	310108-5	TOOL RETAINER		2			
008	346677-0	SPRING GUIDE		1			
009	233387-7	COMPRESSION SPRING 52		1			
010	346141-1	PLATE		1			
011	216002-8	STEEL BALL 4.8		4			
012	310145-9	LOCK RING		1			
013	451433-6	CHANGE RING		1			
014	412979-7	HOUSING COVER		1	*		
014-1	141F87-0	HOUSING COVER COMPLETE	<	1			
C10	422809-4	FILTER		1	*		
015	257960-9	RETAINING RING(INT) ROUND R-42		1			
016	267273-0	FLAT WASHER 29		1			
017	424261-2	RUBBER RING 28		1			
018	327778-3	TOOL HOLDER		1			
019	213789-3	O-RING 38		2			
020	213394-6	O RING 23		1			
021	213431-6	FLUORIDE RING 28		1			
022	136454-6	IMPACT BOLT ASSY		1			
D10		INC. 20,21,128					
023	213286-9	O-RING 48		1			
024	312A51-0	BARREL		1			
025	922341-3	HEX. SOCKET HEAD BOLT M6X25		4			
026	213656-2	O RING 53		1			
027	325732-1	RING 20		1			
028	424245-0	RUBBER RING 20		1			
029	267407-5	FLAT WASHER 23		1			
030	451639-6	GUIDE RING		1			
031	412986-0	SLIDE SLEEVE		1			
032	324388-7	STRIKER		1			
033	213958-6	O RING 24		1			
034	327694-9	CYLINDER 32		1			
035	233927-1	RING SPRING 34		1			
036	331660-0	RING 36		1			
037	233407-7	COMPRESSION SPRING 37		1			
038	233927-1	RING SPRING 34		1			
039	318510-6	CYLINDER GUIDE		1			
040	213611-4	O RING 46		1			
041	233927-1	RING SPRING 34		1			
042	267079-6	FLAT WASHER 34		1			
043	419988-7	FILTER CAP		1	*		
043-1	424607-2	FILTER CAP	<	1			

044	213218-6	O RING 16		1	*		
045	423411-6	RUBBER PLATE		1	*		
046	443129-3	FILTER		1			
047	412978-9	CRANK CAP		1			
048	911233-1	PAN HEAD SCREW M5X20		4			
049	234282-4	COMPRESSION SPRING 12		2			
050	422647-4	SEAL RING		1			
051	327693-1	CRANK SHAFT 18.5		1			
052	962157-4	RETAINING RING R-40		1			
053	211490-4	BALL BEARING 6203LLU		1			
054	267825-7	WAVE WASHER 30		1			
055	136390-6	CRANK HOUSING ASSY		1			
C10	213678-2	OIL SEAL 12		1			
056	266041-8	TAPPING SCREW 5X25		4			
057	418350-3	CONNECTING ROD		1			
058	418349-8	PISTON		1			
059	268104-6	PIN 8		1			
060	213432-4	O RING 26		1			
061	213958-6	O RING 24		1			
062	412984-4	SPRING PLATE A		2			
063	234134-9	COMPRESSION SPRING 12		2			
064	325733-9	COUNTER WEIGHT		2	*		
064-1	327842-0	COUNTER WEIGHT	<	2			
065	234134-9	COMPRESSION SPRING 12		2			
066	213325-5	O RING 19		6	*		
066-1	213A09-1	O-RING 19	<	6			
069	140W77-2	HOLDER COMPLETE		2			
070	346140-3	GRIP SPRING 70		1			
071	266522-2	SQUARE BOLT M8X95		1			
072	418363-4	SIDE GRIP BASE 60		1			
073	158131-0	GRIP 36 COMPLETE		1			
075	211106-1	BALL BEARING 6201LLB		1			
076	253744-3	FLAT WASHER 12		1			
077	519642-4	ROTOR ASS'Y		1			
D10		INC. 75,76,78					
078	210005-4	BALL BEARING 608DDW		1			
079	412983-6	BAFFLE PLATE		1			
080	265999-8	TAPPING SCREW 4X25		4			
081	629335-6	STATOR		1			
082	620D76-1	CONTROLLER B		1			
083	687B69-9	STOPPER		1			
084	266490-9	TAPPING SCREW PT 2X6		3			
085	632R64-0	LEAD UNIT		1			
086	652031-1	PAN HEAD SCREW M3X6		3			
087	412982-8	MOTOR HOUSING		1			
088	256380-4	SHOULDER PIN 4-6		2			
089	412985-2	BASE		1			
090	232643-2	TORSION SPRING 13		1			
091	140W48-9	LEVER COMPLETE		1			
092	263046-9	TAPPING SCREW 3X14		2			
093	620D75-3	SENSOR CIRCUIT		1			

094	266326-2	TAPPING SCREW 4X18		2		
095	620796-3	DIAL CIRCUIT		1	*	
095-1	620H67-6	DIAL CIRCUIT	<	1		
096	140W78-0	MOTOR HOUSING COVER COMPLETE		1		
C10	422564-8	SPONGE SHEET		1	*	
C11	422730-7	RUBBER SHEET	<	1		
097	265999-8	TAPPING SCREW 4X25		2		
098	265999-8	TAPPING SCREW 4X25		4		
099	183R90-7	HOUSING SET		1		
C10	422646-6	CAP 10		2		
C20	347755-9	GUARD RAIL		2		
D10		INC. 115				
100	232411-3	COMPRESSION SPRING 8		1		
101	620549-0	LED CIRCUIT		1		
102	620E09-2	CONTROLLER		1		
103	422642-4	CUSHION RUBBER		1		
104	232650-5	COMPRESSION SPRING 13		1		
105	183R85-0	BATTERY HOLDER SET		1		
C10	263005-3	RUBBER PIN 6		2		
D10		INC. 108				
106	346039-2	SUPPORT PLATE		1		
107	632P49-4	TERMINAL UNIT		1		
108	183R85-0	BATTERY HOLDER SET		1		
C10	263005-3	RUBBER PIN 6		2		
D10		INC. 105				
109	266326-2	TAPPING SCREW 4X18		2		
110	232152-1	LEAF SPRING		1		
111	412981-0	TRIGGER LOCK		1		
112	412980-2	SWITCH LEVER		1		
113	232561-4	COMPRESSION SPRING 5		1		
114	651399-2	SWITCH C3JW-6B-PA		1		
115	183R90-7	HOUSING SET		1		
C10	422646-6	CAP 10		2		
C20	347755-9	GUARD RAIL		2		
D10		INC. 99				
116	140F99-0	CAP COMPLETE		1		
C10	213218-6	O RING 16		1	*	
C11	213A05-9	O-RING16	O	1		
C20	818H07-8	CAP LABEL		1		
117	266326-2	TAPPING SCREW 4X18		8		
118	8012U4-2	XGT LOGO LABEL		1		
119	857Y00-9	HM001G SERIAL NO. LABEL		1		
120	857X94-8	HM001G NAME PLATE		1		
121	135332-7	GRIP 36 ASSEMBLY		1		
D10		INC. 70-73				
128	213385-7	O RING 24		1		
A01	198993-4	GREASE VESSEL SET		1		
A02	443122-7	CLOTH		1		
A03	821838-8	PLASTIC CASE		1	*	
A03-1	141D88-6	PLASTIC CASE COMPLETE	<	1		
A04	198900-7	WIRELESS UNIT SET		1	*	

A04-1	198900-7	WIRELESS UNIT SET	<	1	*		
A04-2	198900-7	WIRELESS UNIT SET	<	1			
B01	191N57-7	HAMMER SERVICE KIT		1			
C10	181490-7	HAMMER GREASE 30G		1			
D10		INC. 1,3,7,20,21,33,60,61					
E01	8026N9-0	SOUND LABEL		1			
F07	199143-4	DUST EXTRACTOR ATT SET(EU)		1			
F08	199144-2	DUST EXTRACTOR ATT SET(EU)		1			

Please state Parts No. when your order.

Print Date 10/12/2023