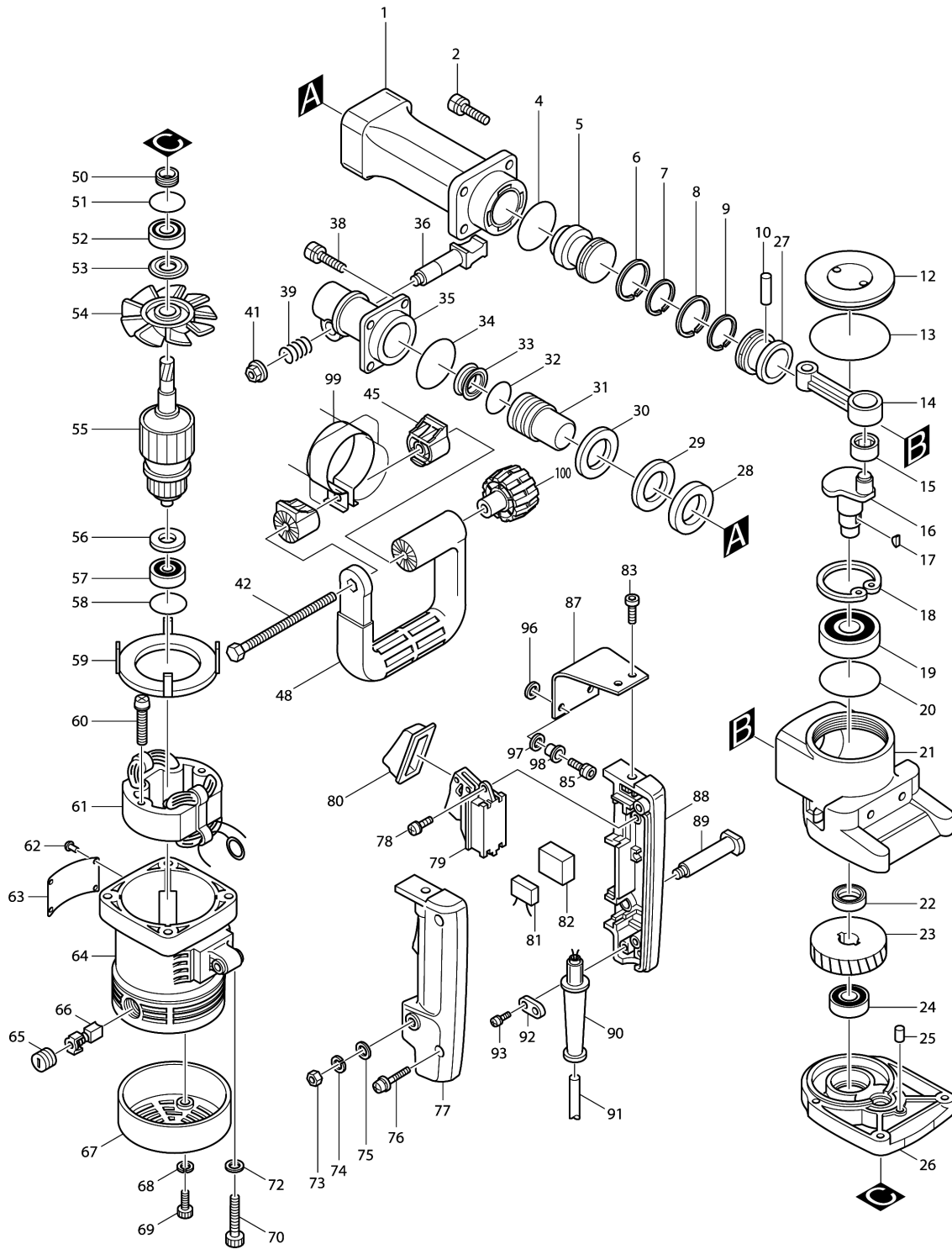


Model No.HM1200K DEMOLITION HAMMER



Model No.HM1200K DEMOLITION HAMMER

Item	Parts No.	Description	I/C	Qty	New/Old	Opt. 1	Opt. 2	Note
001-2	151310-9	BARREL COMPLETE		1				
C10	331331-9	CYLINDER LINER 40		1				
002-1	922451-6	HEX. SOCKET HEAD BOLT M8X30		4				
004	213655-4	O RING 56		1				
005	321732-9	STRIKER		1				
006	412049-2	PISTON RING 40		1				
007	341862-0	INNER RING 36		1				
008	412049-2	PISTON RING 40		1				
009	341862-0	INNER RING 36		1				
010	256120-0	PIN 10		1				
012-3	150369-3	CRANK CAP COMPLETE		1	*			
C10	810712-5	CAUTION LABEL		1	*			
012-4	414218-1	CRANK CAP	O	1				
013	213754-2	O RING 71		1				
014	315419-3	CONNECTING ROD		1				
015	212208-6	NEEDLE BEARING 1516		1				
016	152180-9	CRANK SHAFT COMPLETE		1				
017	254001-2	WOODRUFF KEY 4		2				
018	962251-2	RETAINING RING R-52		1				
019	211314-4	BALL BEARING 6304		1	*			
019-1	211327-5	BALL BEARING 6304LLU	O	1				
020	213656-2	O RING 53		1				
021-1	156863-3	CRANK HOUSING COMPLETE		1				
D10		INC. 20						
022	213306-9	OIL SEAL 20		1				
023	221701-9	HELICAL GEAR 50		1				
024	211209-1	BALL BEARING 6202		1				
025	256111-1	PIN 6		1				
026	157072-7	GEAR HOUSING		1				
D10		INC. 40						
027	321441-0	PISTON		1				
028-2	267059-2	FLAT WASHER 32		1				
029	261069-1	NYLON WASHER 33		1				
030	253976-2	FLAT WASHER 33		1				
031-1	322256-8	IMPACT BOLT		1				
032	213468-3	O RING 32		1				
033-1	213420-1	X RING 28		1	*			
033-2	213428-5	X RING 28	X	1				
034	213604-1	O RING 50		1				
035	321932-1	TOOL HOLDER		1				
036	331132-5	TOOL RETAINER		1				

Please order the parts with part number.

Print Date 27/6/2019

Model No.HM1200K DEMOLITION HAMMER

Item	Parts No.	Description	I/C	Qty	New/Old	Opt. 1	Opt. 2	Note
038-1	922451-6	HEX. SOCKET HEAD BOLT M8X30		4				
039	231281-7	COMPRESSION SPRING 15		1				
041-1	252046-4	HEX. NUT M8-13		1				
042-1	952257-8	SPLIT PIN 3.0-20		1	*			
042-2	265439-6	HEX. BOLT M8X150	S	1				
045	342987-3	GRIP BASE		1	*			
045-1	416008-8	HANDLE BASE 48	S	1	*			
045-2	416397-1	HANDLE BASE 48	S	1				
048	342988-1	SIDE HANDLE		1	*			
048-1	416009-6	SIDE HANDLE	S	1	*			
048-2	417003-1	SIDE HANDLE	S	1				
050	331180-4	SEAL		1				
051	213460-9	O RING 35		1				
052	211206-7	BALL BEARING 6202LLB		1				
053	213202-1	DUST SEAL 15		1				
054	241638-4	FAN 94		1				
055C_	514778-4	ARMATURE ASS'Y 220V		1	*			
D11		INC. 54,56,57			*			
055C1	514778-4	ARMATURE ASS'Y 220V	O	1				
D11		INC. 54,56,57						
056	681624-7	INSULATION WASHER		1	*			
056-1	681635-2	INSULATION WASHER	O	1				
057-2	211066-7	BALL BEARING 6200LLB		1	*			
057-3	211087-9	BALL BEARING 6200DDW	X	1				
058	213406-5	O RING 30		1				
059	410163-8	BAFFLE PLATE		1				
060-2	265347-1	+ HEX. BOLT M5X45		2				
061I_	528910-4	FIELD ASS'Y 220V		1				
C10	654020-2	RING TERMINAL		2				
C20	654502-4	CONNECTOR P-2		2				
062	953106-2	RIVET 0-5		4				
063	855544-3	NAME PLATE HM1200K		1				
064-1	159034-1	MOTOR HOUSING		1	*			
C10	643653-8	BRUSH HOLDER 6.5-13.5		2	*			
C20	913206-0	SET SCREW M5X8		2	*			
D10		INC. 58			*			
064-2	159034-1	MOTOR HOUSING	O	1				
C10	643653-8	BRUSH HOLDER 6.5-13.5		2				
C20	913206-0	SET SCREW M5X8		2				
D10		INC. 58						
065	643650-4	BRUSH HOLDER CAP 6.5-13.5		2	*			
065-1	643650-4	BRUSH HOLDER CAP 6.5-13.5	O	2				

Please order the parts with part number.

Print Date 27/6/2019

Model No.HM1200K DEMOLITION HAMMER

Item	Parts No.	Description	I/C	Qty	New/Old	Opt. 1	Opt. 2	Note
066	181048-2	A.C. CARBON BRUSH CB-155		1				
067	284055-5	REAR COVER		1				
068-1	942101-7	SPRING WASHER 5		2	*			
069-2	922222-1	HEX. SOCKET HEAD BOLT M5X16		2	*			
069-3	922221-3	HEX. SOCKET HEAD BOLT M5X16	O	2				
070-1	922371-4	HEX. SOCKET HEAD BOLT M6X50		4				
072-1	941151-9	FLAT WASHER 6		4				
073	931302-2	HEX. NUT M6		1				
074	942151-2	SPRING WASHER 6		1				
075	941151-9	FLAT WASHER 6		1				
076	911243-8	PAN HEAD SCREW M5X25		2				
077-1	182077-8	HANDLE SET		1				
C10	263002-9	RUBBER PIN 4		2				
D10		INC. 88						
078	911129-6	PAN HEAD SCREW M4X16		1				
079-1	651145-3	SWITCH C3D-H-MS		1				
080	421265-5	DUST COVER		1				
081E1	645253-0	NOISE SUPPRESSOR		1				
082	685700-9	SPONGE SHEET		1				
083-3	922316-2	HEX. SOCKET HEAD BOLT M6X14		2				
085-4	265914-2	HEX. SOCKET HEAD BOLT M6X25		2				
087-1	343755-7	CUSHION PLATE		2				
088-1	182077-8	HANDLE SET		1				
C10	263002-9	RUBBER PIN 4		2				
D10		INC. 77						
089	321210-9	HANDLE SHAFT		1				
090B_	682540-6	CORD GUARD 9.3-90		1	*			
090B1	682505-8	CORD GUARD 10-90	O	1				
091F1	665883-1	POWER SUPPLY CORD 1.0-2- 5.0		1				
092C_	687031-2	STRAIN RELIEF		1				
093-1	911133-5	PAN HEAD SCREW M4X18		2				
096	262051-3	RUBBER RING 9		2				
097	262052-1	RUBBER RING 9		2				
098	257636-8	SLEEVE 6		2				
099	344378-4	HANDLE SPRING 48		1	*			
099-1	344560-5	HANDLE SPRING 48	S	1				
100	252640-2	WING NUT M8		1				
101	416008-8	HANDLE BASE 48		1	*			
101-1	416397-1	HANDLE BASE 48	S	1				
102	417002-3	SIDE HANDLE CAM	S	2				

Please order the parts with part number.

Print Date 27/6/2019

Model No.HM1200K DEMOLITION HAMMER

Item	Parts No.	Description	I/C	Qty	New/Old	Opt. 1	Opt. 2	Note
103	819063-3	MAKITA LABEL		2				
400	783202-0	HEX. WRENCH 4		1				
404-4	150583-1	PLASTIC CARRYING CASE COMP.		1				
C10	817812-2	CAUTION LABEL		1				
C20	416401-6	LATCH		2	*			
C21	163467-4	LATCH	X	2				
C30	819145-1	MAKITA LOGO LABEL		1				
500	134794-6	SIDE HANDLE ASS'Y		1	*			
D10		INC. 42,45,48,99,100			*			
500-1	134944-3	SIDE HANDLE 48 ASS'Y	O	1				
D10		INC. 42,45,48,99-102						

Please order the parts with part number.

Print Date 27/6/2019