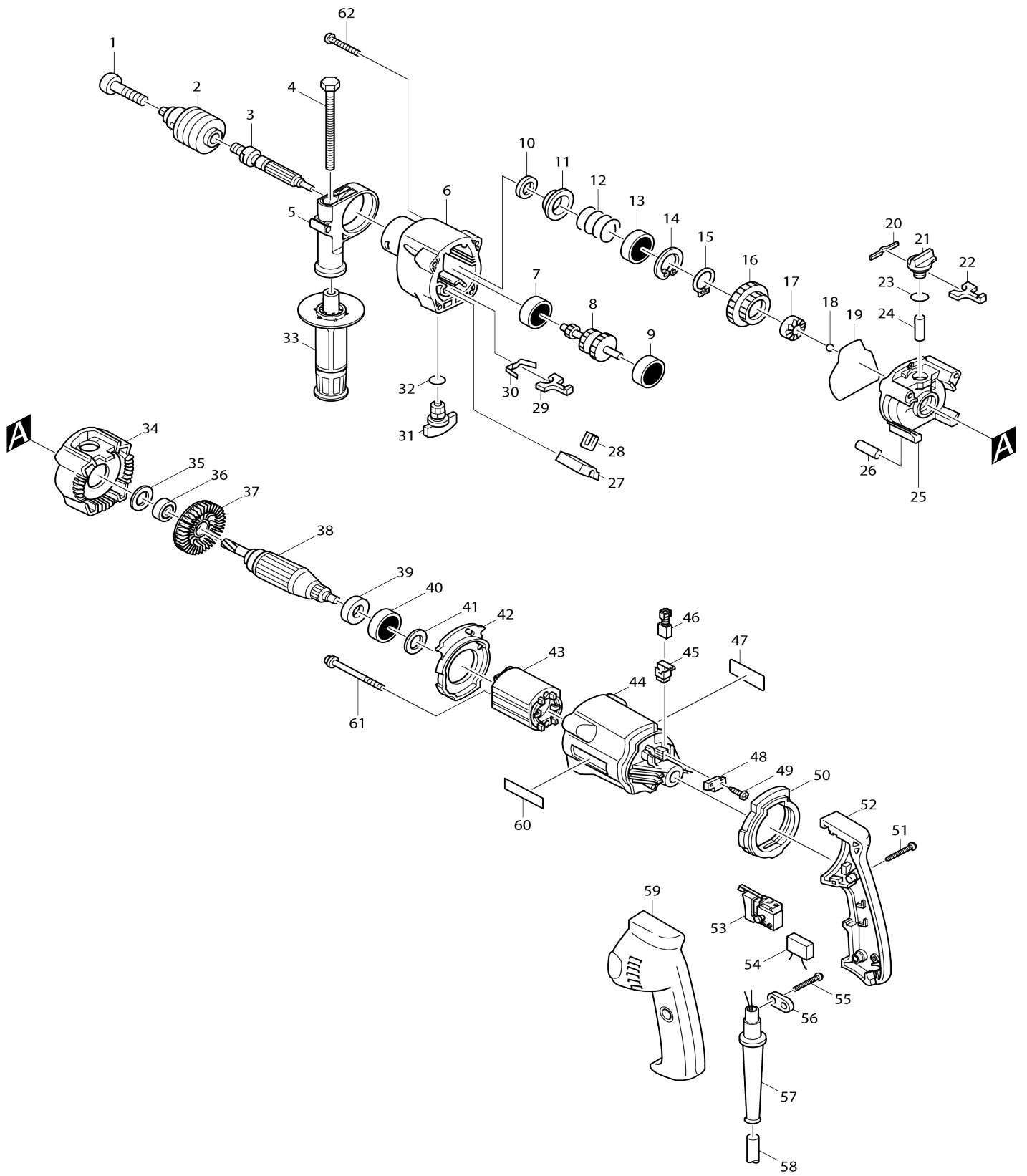


# Model No.HP2030 2-SPEED HAMMER DRILL 20MM



Model No.HP2030 2-SPEED HAMMER DRILL 20MM

Item No.	Parts No.	Description	Interc hang eabilit y	Q'ty	New/ Old	Note1	Note2
001A_	251460-1	- FLAT HEAD SCREW M6X22		1	*		
001A1	251469-3	- FLAT HEAD SCREW M6X25	<	1			
002A_	763105-4	DRILL CHUCK S13		1	*		
002A1	192552-6	DRILL CHUCK S13		1			
003	322786-9	SPINDLE		1	*		
003-1	323854-1	SPINDLE	S	1			
004	921919-9	HEX. BOLT M8X110		1	*		
004-1	921923-8	HEX. BOLT M8X120	O	1			
005	415485-1	GRIP BASE		1			
006	415614-6	GEAR HOUSING		1	*		
006-1	415614-6	GEAR HOUSING	O	1			
007-2	211014-6	BALL BEARING 606		1			
008	226818-3	GEAR COMPLETE 8-19-25		1			
009-2	211014-6	BALL BEARING 606		1			
010	213314-0	OIL SEAL 19		1			
011	344177-4	CUP WASHER 26		1			
012	233091-8	COMPRESSION SPRING 16		1			
013	211206-7	BALL BEARING 6202LLB		1			
014	962153-2	RETAINING RING R-35		1			
015	961055-9	RETAINING RING S-15		1			
016	226289-4	SPUR GEAR 27-38		1	*		
016-1	226342-6	SPUR GEAR 27-38	O	1			
017	223104-3	CAM A		1			
018	216018-3	STEEL BALL 5.0		1	*		
018-1	216001-0	STEEL BALL 3.5	X	1			
019	213759-2	O RING 72		1			
020	232053-3	LEAF SPRING		1			
021	415619-6	CHANGE LEVER A		1			
022	344178-2	LOCK PLATE		1			
023	213162-7	O RING 14		1			
024	322787-7	CHANGE PIN 8		1			
025	159793-7	CAM HOUSING COMPLETE		1	*		
025-1	151764-0	CAM HOUSING COMPLETE	X	1			
026	256226-4	PIN 4		1	*		
026-1	256251-5	PIN 4	O	1			
027	415621-9	RACK 12		1			
028	344179-0	CHANGE PLATE		1			
029	344178-2	LOCK PLATE		1			
030	232143-2	LEAF SPRING		1			
031	415620-1	CHANGE LEVER B		1			
032	213162-7	O RING 14		1			
033A_	152489-9	GRIP 36 COMPLETE		1			
034	415615-4	CAM HOUSING COVER		1			
035	253707-9	FLAT WASHER 16		1	*		
036	210005-4	BALL BEARING 608DDW		1			
037	241850-6	FAN 60		1			
038C_	517103-8	ARMATURE ASS'Y 220V		1			

D10		INC. 36,37,39,40				
039	681614-0	INSULATION WASHER		1		
040	211026-9	BALL BEARING 627LLB		1	*	
040-1	210025-8	BALL BEARING 627LLB	O	1		
041	253707-9	FLAT WASHER 16		1		
042	415618-8	BAFFLE PLATE		1		
043B_	633298-0	FIELD 220V		1	*	
043B1	633413-6	FIELD 220V	X	1		
044	415601-5	MOTOR HOUSING		1		
045	643923-5	BRUSH HOLDER		2		
046A_	191962-4	CARBON BRUSH CB-419		1	*	
046A1	195015-1	CARBON BRUSH SET CB-419	O	1		
047	857769-5	NAME PLATE		1		
048	415622-7	BRUSH HOLDER PLATE		2		
049	266007-8	TAPPING SCREW BIND PT 3X10		4		
050	421505-1	CUSHION RUBBER		1		
051A_	266121-0	TAPPING SCREW FLANGE PF 4X1 8		5	*	
051A1	265995-6	TAPPING SCREW 4X18	O	5		
052	182724-1	HANDLE SET		1	*	
D10		INC. 59				
052-1	182724-1	HANDLE SET	X	1		
D10		INC. 59				
053B_	651952-4	SWITCH 8653C721AD 200V-240V		1	*	
053B1	651987-5	SWITCH	X	1	*	
053B2	651987-5	SWITCH	X	1	*	
053B3	651986-7	SWITCH TG803TLB-1	O	1		
054B_	645256-4	NOISE SUPPRESSOR		1	*	
054B1	645144-5	NOISE SUPPRESSOR	O	1		
055A_	266121-0	TAPPING SCREW FLANGE PF 4X1 8		2	*	
055A1	265995-6	TAPPING SCREW 4X18	O	2		
056A_	687052-4	STRAIN RELIEF		1		
057B_	682549-8	CORD GUARD 8-85		1		
058H_	665394-6	POWER SUPPLY CORD 1.0-2-2.5		1		
059	182724-1	HANDLE SET		1	*	
D10		INC. 52				
059-1	182724-1	HANDLE SET	X	1		
D10		INC. 52				
060	819063-3	MAKITA LABEL		1		
061A_	266113-9	TAPPING SCREW FLANGE PF 4X6 5		2	*	
061A1	266060-4	TAPPING SCREW 4X65	O	2		
062A_	266108-2	TAPPING SCREW FLANGE PF 5X7 0		4	*	
062A1	266038-7	TAPPING SCREW 5X70	O	4		
063	256251-5	PIN 4		1		
A01	415486-9	DEPTH GAUGE		1		
A02A_	763430-3	CHUCK KEY S13		1	*	
A02A 1	763440-0	CHUCK KEY S13	O	1	*	
A02A 2	763448-4	CHUCK KEY S13	O	1	*	

A02A 3	763430-3	CHUCK KEY S13	O	1			
A03	410102-8	KEY HOLDER		1			
A04A_	824474-9	PLASTIC CARRYING CASE		1	*		
A04A 1	824485-4	PLASTIC CARRYING CASE	O	1			
C10	183091-7	SLIDE LATCH RL SET		1			
E03	654128-2	EARTH TERMINAL		1			

Please state Parts No. when your order.

Print Date 12/09/2023