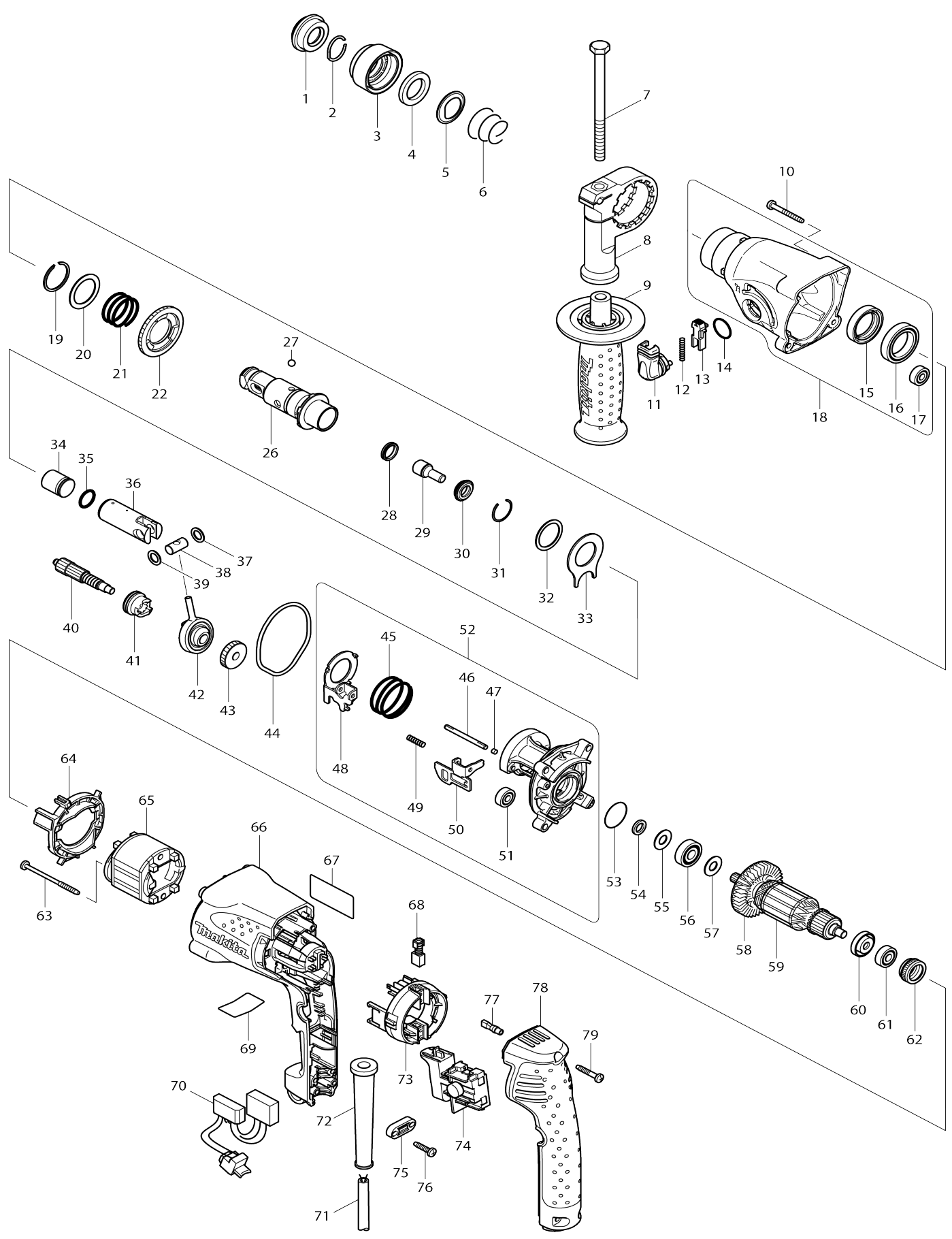


Model No.HR1830F ROTARY HAMMER 18MM



Model No.HR1830F ROTARY HAMMER 18MM

Item No.	Parts No.	Description	Interchangability	Q'ty	New/Old	Note1	Note2
001	286263-4	CAP 35		1			
002	233940-9	RING SPRING 19		1			
003	419220-9	CHUCK COVER		1			
004	257241-1	RING 21		1			
005	345187-4	GUIDE WASHER		1			
006	233916-6	CONICAL COMP. SPRING 21-29		1			
007	921923-8	HEX. BOLT M8X120		1			
008	417911-6	GRIP BASE		1			
009	154842-5	GRIP 36 COMPLETE		1	*		
C10	931402-8	HEX. NUT M8		1	*		
009-1	158057-6	GRIP 36 COMPLETE	O	1			
C10	931402-8	HEX. NUT M8		1			
010	266053-1	TAPPING SCREW 4X35		4			
011	162242-5	CHANGE LEVER COMPLETE		1			
012	233459-8	COMPRESSION SPRING 3		1			
013	419192-8	LOCK BUTTON		1			
014	213278-8	O RING 17		1			
015	213956-0	OIL SEAL 25		1	*		
015-1	213535-4	OIL SEAL 25	O	1			
016	211375-4	BALL BEARING 6805LLB		1			
017	211012-0	BALL BEARING 606ZZ		1			
018	154840-9	GEAR HOUSING COMPLETE		1			
D10		INC. 15-17					
019	961135-1	RETAINING(EXT) WR-25		1			
020	267304-5	FLAT WASHER 25		1			
021	233457-2	COMPRESSION SPRING 25		1			
022	331707-0	SPUR GEAR 46		1			
026	154843-3	TOOL HOLDER COMPLETE		1			
027	216022-2	STEEL BALL 7.0		1			
028	213183-9	X RING 13		1			
029	324611-0	IMPACT BOLT		1			
030	257275-4	RING 11		1			
031	233942-5	RING SPRING 22		1			
032	267175-0	FLAT WASHER 24		1			
033	345681-6	JOINT PLATE		1			
034	324613-6	STRIKER		1			
035	213182-1	O RING 14		1			
036	331708-8	PISTON CYLINDER		1			
037	267130-2	FLAT WASHER 9		1			
038	324612-8	PISTON JOINT		1			
039	267130-2	FLAT WASHER 9		1			
040	227152-4	SPUR GEAR 10		1			
041	331706-2	CLUTCH CAM		1			
042	219019-0	SWASH BEARING 9		1			
043	226620-4	HELICAL GEAR 23		1			
044	423346-1	SEAL RING		1			
045	233458-0	COMPRESSION SPRING 32		1			

046	268147-8	PIN 4		1		
047	443123-5	FELT 4X3		1		
048	345645-0	CHANGE PLATE		1		
049	233460-3	COMPRESSION SPRING 3		1		
050	345654-9	STOPPER PLATE		1		
051	211012-0	BALL BEARING 606ZZ		1		
052	154841-7	INNER HOUSING COMPLETE		1		
D10		INC. 45-51				
053	213953-6	O RING 24		1		
054	267302-9	FLAT WASHER 9		1		
055	267231-6	FLAT WASHER 9		1		
056	210060-6	BALL BEARING 609LLU		1		
057	267231-6	FLAT WASHER 9		1		
058	240083-0	FAN 52		1		
059	515649-8	ARMATURE ASS'Y 240V		1		
D10		INC. 56-58,60,61				
060	681636-0	INSULATION WASHER		1		
061	210017-7	BALL BEARING 607DDW		1		
062	421868-5	LABYRINTH RUBBER RING 19		1		
063	266091-3	TAPPING SCREW 4X50		2		
064	419196-0	BAFFLE PLATE		1		
065	633624-3	FIELD 220-240V		1		
066	419200-5	MOTOR HOUSING		1		
067	862451-3	HR1830F NAME PLATE		1		
068	191962-4	CARBON BRUSH CB-419		1	*	
068-1	195015-1	CARBON BRUSH SET CB-419	O	1		
069	814929-2	HR1830F SERIAL NUMBER LABEL		1		
070	631724-3	LIGHT CIRCUIT		1		
071	665890-4	POWER SUPPLY CORD 1.0-2-4.0		1		
072	682566-8	CORD GUARD 10		1		
073	638236-7	BRUSH HOLDER UNIT		1		
074	650570-5	SWITCH TG843TB-2		1		
075	687052-4	STRAIN RELIEF		1	*	
075-1	687124-5	STRAIN RELIEF	O	1		
076	265995-6	TAPPING SCREW 4X18		2		
077	686038-5	RECEPTACLE SLEEVE		2		
078	419197-8	HANDLE COVER		1		
079	265999-8	TAPPING SCREW 4X25		3		
080	819358-4	CLEAR LABEL		1	*	
080-1	892830-1	CLEAR LABEL	<	1		
081	819363-1	CLEAR LABEL		1	*	
081-1	892828-8	CLEAR LABEL		1		
A01	415486-9	DEPTH GAUGE		1		
A02	804345-6	HR1830F MODEL NO. LABEL		1		
A03	824650-5	PLASTIC CARRYING CASE		1	*	
C10	417724-5	LATCH		2	*	
C20	819144-3	MAKITA LOGO LABEL		1	*	
A03-1	821896-4	PLASTIC CASE	O	1		
C10	417724-5	LATCH		2		
C20	819144-3	MAKITA LOGO LABEL		1		

Please state Parts No. when your order.

Print Date 11/16/2023